

A close-up, high-magnification image of an Intel processor die, showing its intricate circuitry and the characteristic square grid pattern. The die is dark and metallic, with a circular edge. It is positioned on the left side of the slide, partially overlapping the text area.

# Intel Communications Group

SEAN MALONEY  
Executive Vice President  
General Manager, Intel Communications Group

# Agenda

- 1) The Broadband Wireless Era
- 2) Our Challenges For Broadband Wireless

# Agenda

**1) The Broadband Wireless Era**

2) Our Challenges For Broadband Wireless



Telecom  
Industry

# Broadband Wireless

## Telecom '03 – Geneva

**Swisscom\* AG** is set to provide a combined GPRS, 3G, and 802.11 PC card to its customers that will allow them to use any of those wireless access modes.

*Light Reading, October 12, 2003*

### **HP\* spotlights mobile gear**

As part of a big push in mobile computing, Hewlett-Packard announced a slew of devices that can connect to a wireless network--or often more than one network.

*CNET on ITU, October 13, 2003*

### **VoIP, cell phone downloads take center stage**

Two technologies expected to take center stage this week are VoIP and downloadable software for wireless devices.

*CNET on ITU, October 12, 2003*

**NTT DoCoMo Inc.\*** showcased its 3G network and I-mode technology, with executives... on board to talk future 4G (fourth-generation) technologies.

*IDG News, October 12, 2003*

\* Other names and brands may be claimed as the property of others.



Telecom  
Industry



Consumer  
Electronics

**Broadband Wireless**

# Consumer Electronics Show Las Vegas '04

## Home Is Where The Wireless Hub Is

Every appliance in the home someday will communicate with each other like a well-oiled staff of digital servants...

*Wall Street Journal on CES January 8, 2004*

**“The wireless network becomes the backbone of a home's entertainment infrastructure.”**

*Steve Troyer, Linksys, CES, Jan. 8, 2004*

\* Other names and brands may be claimed as the property of others.



Telecom  
Industry



Consumer  
Electronics



Content  
Distribution

**Broadband Wireless**



## Content Distribution

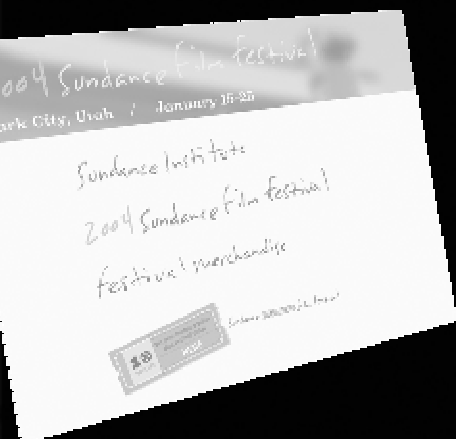


### Stars Show Up At Sundance\*

Intel was showing its new Centrino, wireless technology that beams movies to PCs and home theaters and promises to expand the market for Indie films.

*Reuters News, January 18, 2004*

\* Other names and brands may be claimed as the property of others.



## Sundance VIDEO





Telecom  
Industry



Consumer  
Electronics



Content  
Distribution



The Next  
Billion

**Broadband Wireless**

# The Next Billion

**HANOI (AFP)** - Vietnam Data Communications Co. (VDC) said it has launched the country's first wireless hotspot enabling surfers to access the Internet on their computer laptops or mobile devices.

*Yahoo News June 13, 2003*

## ***Wi-Fi\* Delivers for Developing Countries***

The UN explains, "pilot projects around the world are fast proving that Wi-Fi technologies can bring broadband access to underserved populations at a fraction of the cost of alternative wired or wireless technologies.

*802.11 Planet May 1, 2003*

## **DakNet: Wi-Fi store-and-forward in India**

A simple store-and-forward Wi-Fi system, using a government bus as a central linkage. The bus contains a simple Wi-Fi installation and server, and when in range of one of the outlying information kiosk's it sync's data for later processing....

*Yahoo News May 8 2003*

## **Wi-Fi Bridges Indonesia's Digital Divide**

*802.11 Planet May 17, 2003*

## **No messing around with wires anymore. Wi-Fi comes to Nepal**

*Nepali Times, January 2003*

\* Other names and brands may be claimed as the property of others.

# Agenda

1) The Broadband Wireless Era

**2) Our Challenges For Broadband Wireless**

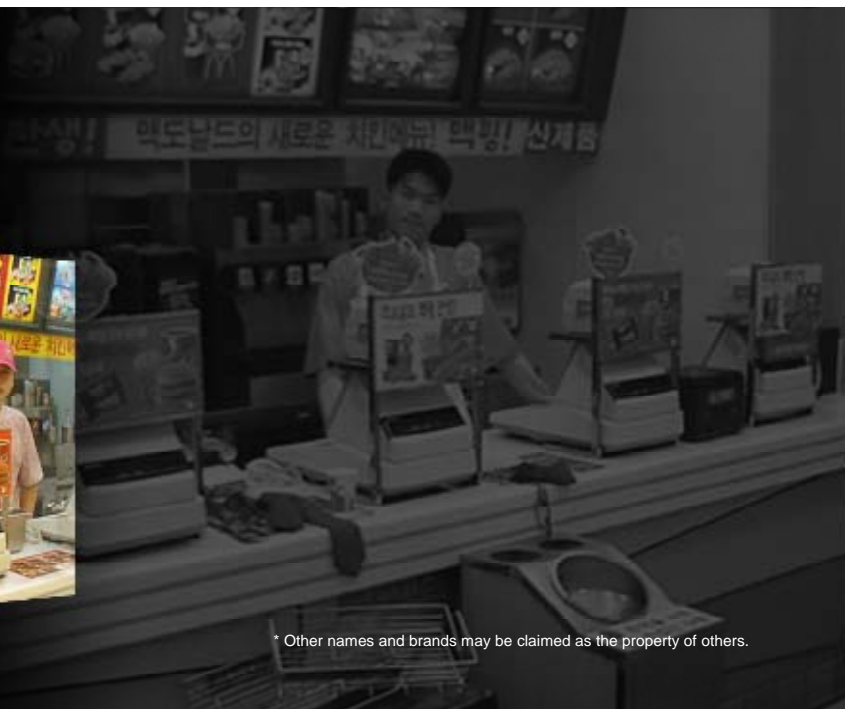
# Challenge #1: Improve the client.



\* Other names and brands may be claimed as the property of others.

San Mateo Police  
VIDEO





\* Other names and brands may be claimed as the property of others.



A grayscale photograph of a person holding a PDA device, which is a handheld computer with a screen and a keypad. The person is looking at the device. The background is dark and out of focus.

## Enhance the PDA and Handset Platform:

Memory

Applications Processor and Graphics

Communications Capability

Radio

A grayscale background image of a person holding a PDA device. The person is out of focus, and the device is held in front of their face. The device has a small screen displaying a portrait of a person.

## Enhance the PDA and Handset Platform:

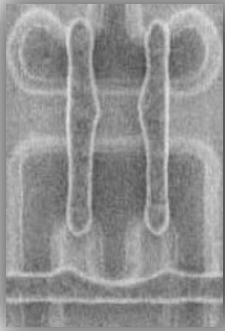
Memory

Applications Processor and Graphics

Communications Capability

Radio

## 90nm: A Challenge For The Industry



"Modeling challenges for  
90nm and below..."

*EE Times, September 19, 2003*

"Photomask yields remain troubling,  
especially down to 90nm."

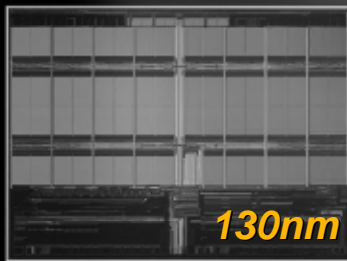
*Silicon Strategies, September 12, 2003*

"Challenges associated with scaling below  
100nm become extremely complex with  
Flash Memory."

*European Equity Research, June 23, 2003*

\* Other names and brands may be claimed as the property of others.

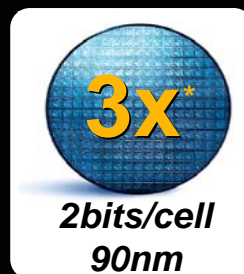
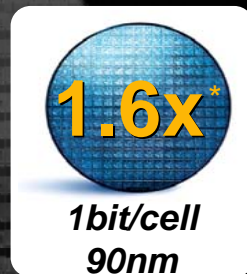
# World's First 90nm NOR Flash Memory



- Low Cost
- Increased Capacity
- Samples in April '04
- Production in Q3'04

*\* Comparison of 90nm vs. 130nm at equivalent density*

## 90nm Continues: Intel StrataFlash® Wireless Memory



**Multi-Level Cell on 90nm delivers 3X bits/wafer than 130nm**

\* Relative bits per wafer

A grayscale photograph of a person holding a PDA device, which is a handheld computer with a screen and a keypad. The person is looking at the device. The background is dark and out of focus.

## Enhance the PDA and Handset Platform:

Memory

Applications Processor and Graphics

Communications Capability

Radio



3-D Multimedia **ACCELERATOR**  
for Handhelds...

**Ships in Q1'04**



Carbonado  
DEMO

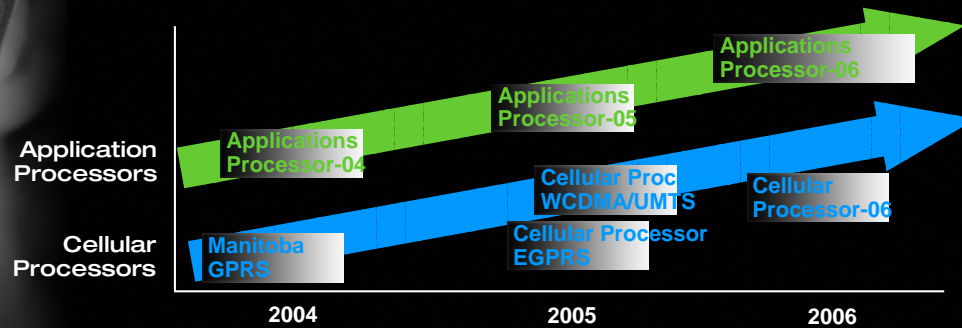
Carbonado  
DEMO



# Enhance the PDA and Handset Platform:

## APPLICATIONS PROCESSOR

Cellular/Handheld Processor Roadmap



A grayscale background image of a person holding a small, early mobile device, possibly a PDA or a first-generation smartphone. The person's face is blurred, and the device's screen shows a small portrait of a person.

## Enhance the PDA and Handset Platform:

Memory

Applications Processor and Graphics

Communications Capability

Radio

## Enhance the PDA and Handset Platform:



A black and white photograph of a man in the foreground, wearing glasses and a light-colored sweater, looking down at a handheld PDA device. He is holding a stylus. In the background, a woman with curly hair is partially visible, looking towards the camera. The image is used as a background for the text on the left side of the slide.

## Enhance the PDA and Handset Platform:

### Handheld Wi-Fi in '04:

- Highest Throughput  
802.11g + Bluetooth
- Lowest Power
- Smallest Real Estate

\* Other names and brands may be claimed as the property of others.

A grayscale background image of a person holding a PDA device. The person is out of focus, and the device is held in front of their face. The device has a small screen displaying a portrait of a person.

## Enhance the PDA and Handset Platform:

Memory

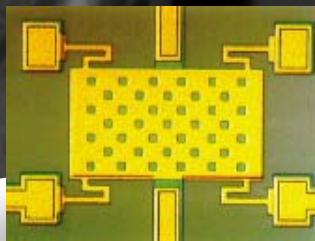
Applications Processor and Graphics

Communications Capability

Radio

# Enhance the PDA and Handset Platform:

Radio  
Technology



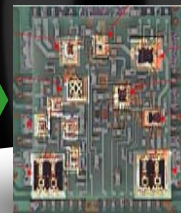
# Enhance the PDA and Handset Platform:

Intel Multi-Chip Module Using  
MEMS Technology

Many Components  
Many Packages



INTEL  
Technology



## Enhance the PC and Notebook

- Compatibility
- Reach
- Performance
- Battery life







## Challenge #2:

Modular,  
**STANDARDS-BASED**  
networks.

# Modularity Happens

## **ATCA Market to hit \$20 Billion by 2007**

*Comms Design  
January 5, 2004*

**Iskrateel has chosen a modular, open-standards-based hardware platform from Intel** for a softswitch that serves as the "nerve center" of its next-generation platform for Class-4 and Class-5 telecommunications services.

*Madrid  
October 16, 2003*

## **Next-Generation Pilot System Based On Intel's Modular Communications Platform**

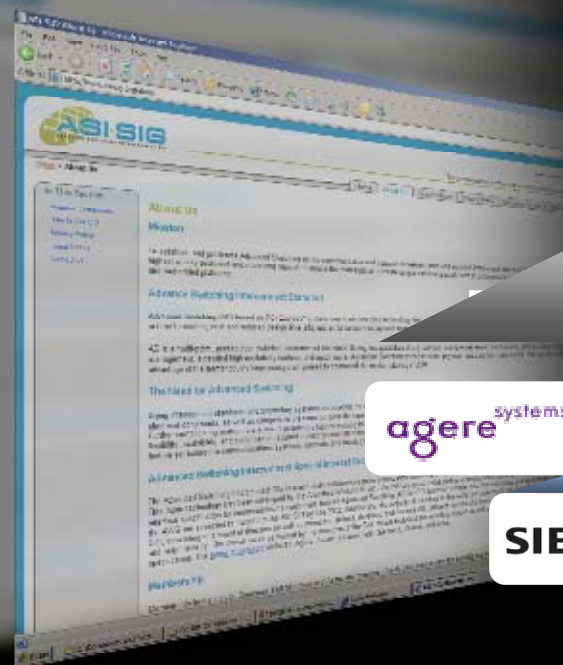
*Seoul, Korea  
December 15, 2003*

## **NEC to Launch World's First, Advanced New Platform for Mobile Operators Employing Advanced-TCA(TM)**

*September 10, 2003*

\* Other names and brands may be claimed as the property of others.

2003



agere  
systems

ALCATEL

Huawei Technologies

intel

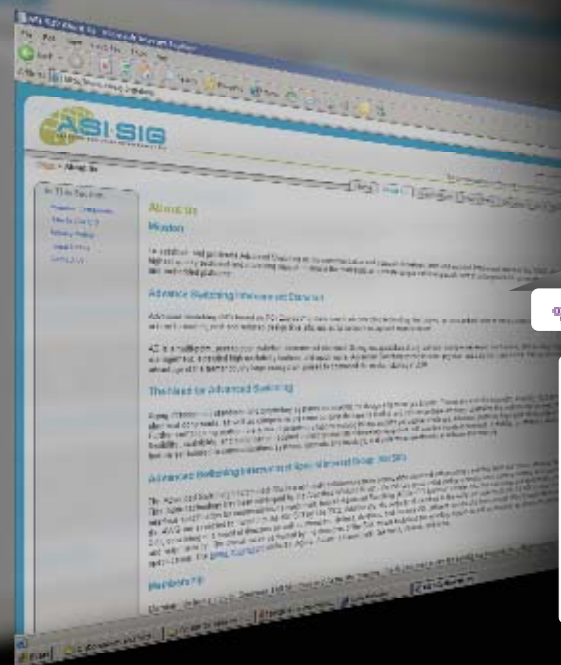
SIEMENS

VITESSE

XILINX

\* Other names and brands may be claimed as the property of others.

[www.asi-sig.org](http://www.asi-sig.org)

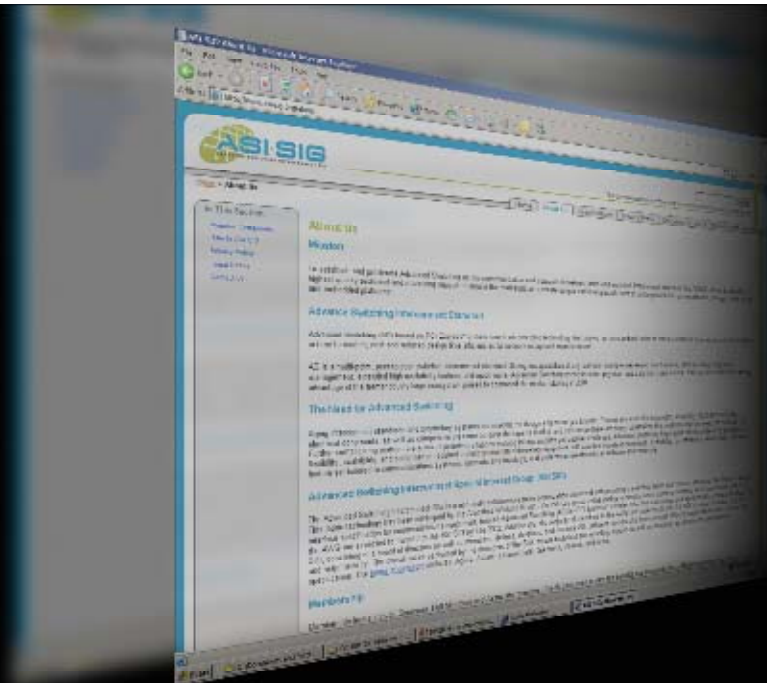


## Board of Directors



\* Other names and brands may be claimed as the property of others.

[www.asi-sig.org](http://www.asi-sig.org)



**Sandeep Vij**  
Vice President  
Worldwide Marketing

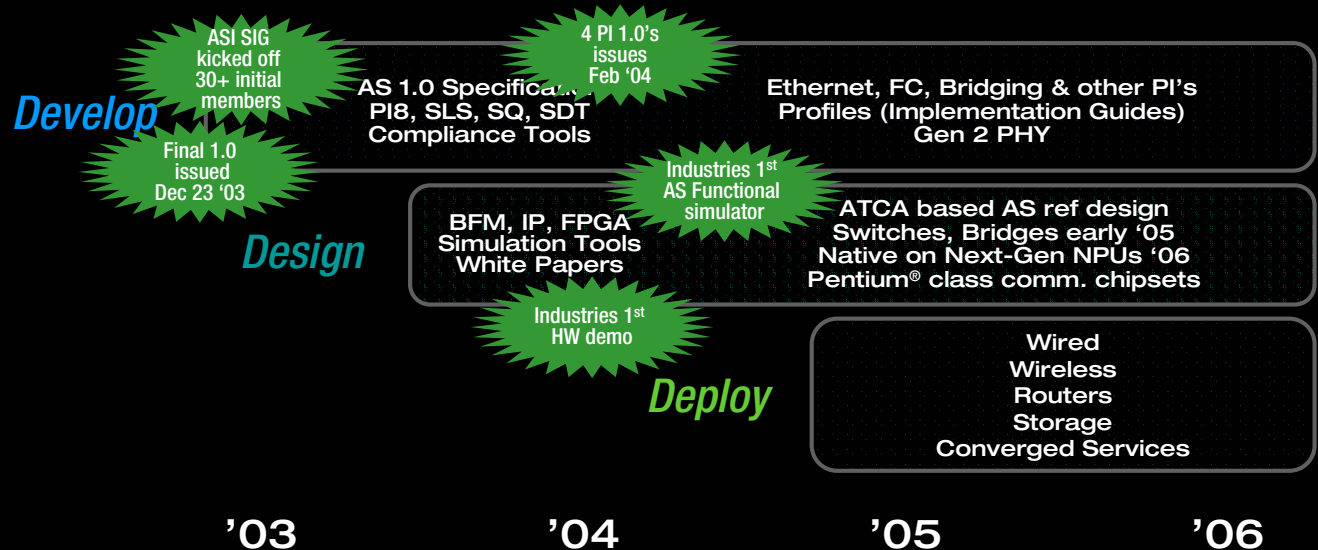


DEMO

VIDEO

DEMO

# Advanced Switching Industry Rollout



\* Other names and brands may be claimed as the property of others.



# The Network Processor

*...Intel from fourth place...to first place in the first half of 2003."*

*"...strong growth by Intel amidst a mostly flat market from 2002 to 2003 exemplifies the importance of having a strong ecosystem..."*

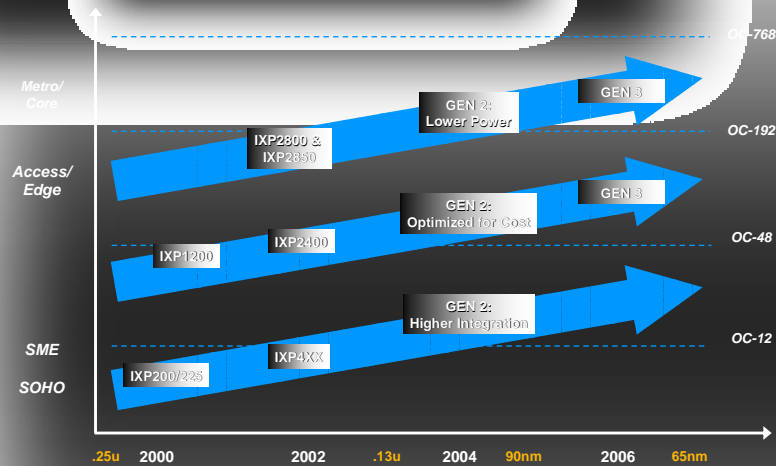
**In-StatMDR**

January 26, 2004

\* Other names and brands may be claimed as the property of others.



# The Network Processor



## Intel's Efforts In 10G

- Next Generation Switch Silicon
  - 90nm: 4-6 chips into 1 with mixed signal capability
  - Network connectivity optimized for blade servers
  - Multiport Gigabit with 10 Gigabit Uplinks
- Second Generation 10 Gigabit Server Adapter
  - Catalyst for 10 Gigabit to the data center
  - Cost-setter Intel Multimode Optics Module
  - Standard PCI-X slot, low power, cost effective
- Products launching later this year



## New 4Gbps Optical Transceivers

- Doubles speed of Fibre Channel SANs without raising cost
- Compliant with SFF and SFP MSAs to speed time to market – compatible with today's 1G/2G networks
- Sampling now
- Production in 2H'04



**TXN31115**

**TXN31015**

## Challenge #3:

Build the Next Generation  
Wireless Infrastructure



\* Other names and brands may be claimed as the property of others.

A dark-themed world map showing the outlines of continents. Japan is highlighted with a bright green and yellow glow, indicating it is the only country shown with more than 50% broadband deployment.

**Countries with > 50% Broadband Deployment**

# WiMAX\* Vision – Outdoor Install (1H'05)



**Business  
Access &  
Backhaul**

**Premium  
Residential  
Service**



802.16REVd

**Hotspot  
Backhaul**



Wi-Fi

\* Other names and brands may be claimed as the property of others.

## WiMAX Vision – Indoor Install (2H'05)



**Business  
Access &  
Backhaul**



**Add  
consumer  
indoor**



**802.16E Vd**

**Hotspot  
Backhaul**



**Wi-Fi**

\* Other names and brands may be claimed as the property of others.

# WiMAX Vision - Portability ('06)



**Business  
Access &  
Backhaul**

802.16e



802.16E EVd

**Hotspot  
Backhaul**



Wi-Fi

**Consumer  
Broadband  
Access**



\* Other names and brands may be claimed as the property of others.



A dark-themed world map showing the outlines of continents. Japan is highlighted with a bright green and yellow glow, indicating it is the only country shown with more than 50% broadband deployment.

**Countries with > 50% Broadband Deployment**



Our Task



Intel  
**Developer**  
Forum.





Intel  
**Developer**  
Forum.