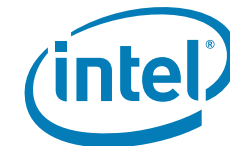


Intel® Mobile Board MGM45RM Integration Guide



overview

English - 中文 - 한국어 - 日本語 - Polski - Italiano - Français - Deutsch - Русский - Português (Brasil) - Español

This guide contains basic instructions for installing the mobile board. For more detailed information, refer to the Product Guide on the Intel® Express Installer driver DVD-ROM.

本指南包含安裝與整合的基本指導說明。有關詳情，請參閱 Intel® Express Installer (Intel 快速安裝程序) 光碟上的《產品指南》。
본 안내서는 데스크톱 보드를 설치하기 위한 기본 지침을 제공합니다. 자세한 내용은 Intel® Express Installer 드라이브에 있는 제품 안내서를 참조하십시오.
このガイドには、デスクトップボードの基本的なインストール手順が記載されています。詳しい情報については、インテル® Express Installer ドライブの CD-ROM に入っている製品ガイドを参照してください。

Należy czytać instrukcję zawierającą podstawowe informacje dotyczące instalacji płyty głównej. Bardziej szczegółowe informacje można znaleźć w Instrukcji obsługi produktu na dysku CD-ROM ze sterownikiem Intel® Express Installer.

Questo manuale contiene le istruzioni di base per l'installazione della scheda. Per informazioni più dettagliate, consultate il Manuale del prodotto sul CD-ROM del driver Intel® Express Installer.

Ce guide fournit des instructions de base portant sur l'installation de la carte pour PC de bureau. Pour de plus amples informations, reportez-vous au Guide du produit figurant sur le CD-ROM des pilotes d'Intel® Express Installer.

Dieses Handbuch enthält grundlegende Anleitungen zur Installation des Desktop-Motherboard. Weitere Informationen finden Sie im Produkthandbuch auf der Intel® Express Installer Treiber-CD-ROM.

В этом руководстве содержатся основные инструкции по установке системной платы на настольном компьютере. Для получения подробной информации см. "Руководство по установке" на системном-диске Intel® Express Installer с драйверами.

Este guia contém instruções básicas para a instalação da placa de desktop. Para obter informações mais detalhadas, consulte o Guia do produto no CD-ROM de drivers do Intel® Express Installer.

Esta guía contiene instrucciones básicas para la instalación de la placa de escritorio. Para obtener información más detallada, consulte la Guía de producto en el CD-ROM de controladores Intel® Express Installer.

사용자안내문(리눅스)이 가지는 가용성으로 전자제품 지침을 환기하시기 주저하지는 않는 물론 모든 지역에서 사용할 수 있습니다.

CAUTION
Remove the battery from the notebook chassis before you connect or disconnect cables or install or remove any board components. Failure to do this can result in equipment damage.

Safety and Regulatory Notice
See the Intel® Mobile Board Product Guide for all applicable regulatory compliance statements, product certification markings, and safety and electromagnetic compatibility (EMC) standards and regulations the board is compliant with.

CAUTION
Electrostatic discharge (ESD) can damage board components. Install the board at an ESD-controlled workstation. If such a workstation is not available, wear an antistatic wrist strap.

Use Only for Intended Applications
Intel Mobile Boards are evaluated as Information Technology Equipment (ITE) for use in notebook computers for use in homes, offices, schools, and similar locations. The suitability of this product for other applications or other environments, such as medical, industrial, or test equipment, etc., may not be supported without further evaluation by Intel.

Processor and Memory Support
For more information about processor and memory support, go to <http://support.intel.com/>.

Customer Support Links
View or download product support information from Intel's World Wide Web site: <http://support.intel.com/support> or view phone and email contacts at <http://support.intel.com/support/feedback.htm>

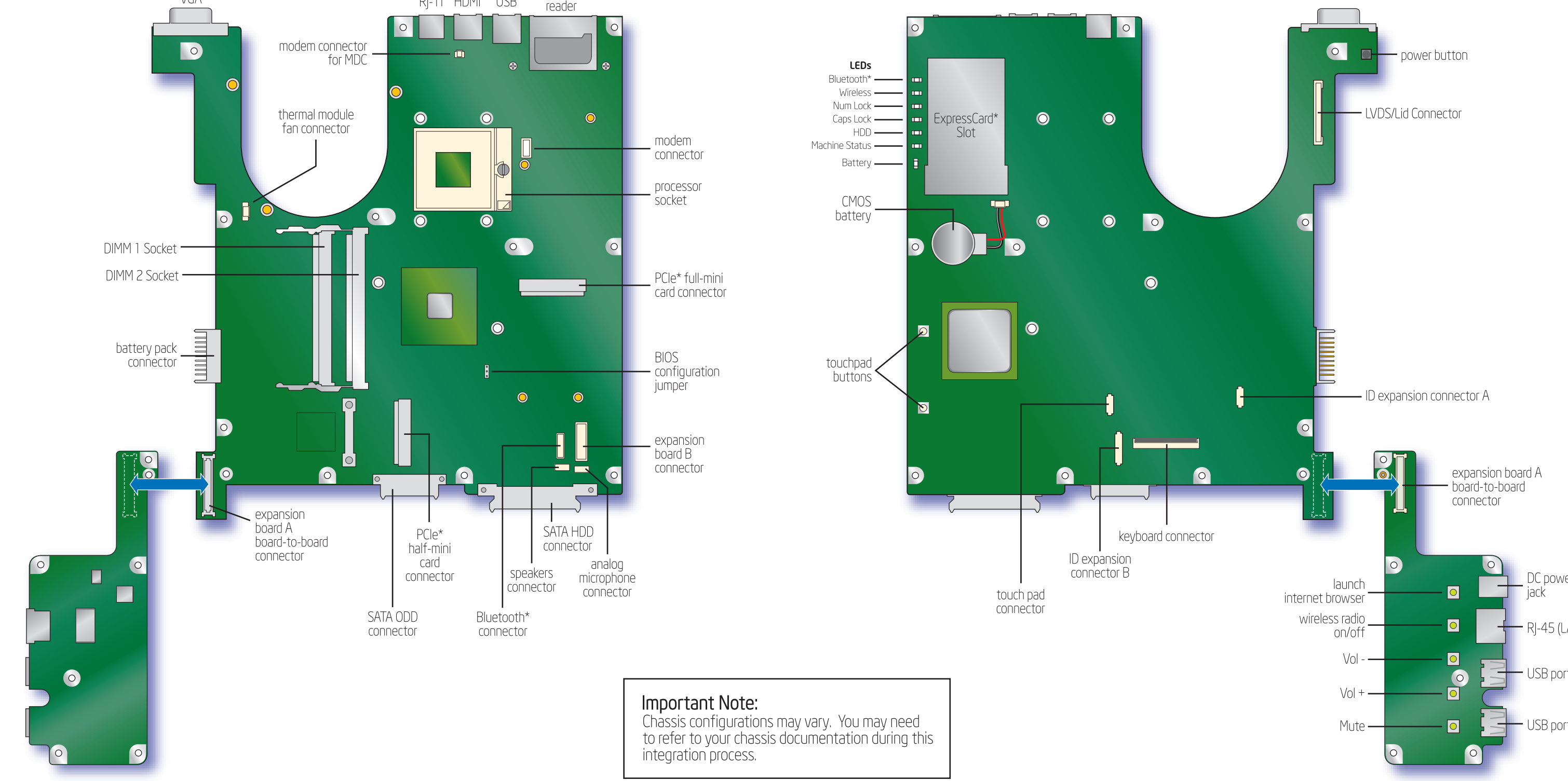
If you cannot find the information you need on the Web site, contact your point of purchase.

INFORMATION IN THIS DOCUMENT IS PROVIDED IN CONNECTION WITH INTEL® PRODUCTS. NO LICENSE, EXPRESS OR IMPLIED, BY ESTOPPEL OR OTHERWISE, TO ANY INTELLECTUAL PROPERTY RIGHTS IS GRANTED BY THIS DOCUMENT. EXCEPT AS PROVIDED IN INTEL'S TERMS AND CONDITIONS OF SALE FOR SUCH PRODUCTS, INTEL ASSUMES NO LIABILITY WHATSOEVER, AND INTEL DISCLAIMS ANY EXPRESS OR IMPLIED WARRANTY, RELATING TO SALE AND/OR USE OF INTEL PRODUCTS INCLUDING LIABILITY OR WARRANTIES RELATING TO FITNESS FOR A PARTICULAR PURPOSE, MERCHANTABILITY, OR INFRINGEMENT OF ANY PATENT, COPYRIGHT OR OTHER INTELLECTUAL PROPERTY RIGHT. INTEL PRODUCTS ARE NOT INTENDED FOR USE IN MEDICAL, LIFE SAVING, OR LIFE SUSTAINING APPLICATIONS. INTEL MAY MAKE CHANGES TO SPECIFICATIONS AND PRODUCT DESCRIPTIONS AT ANY TIME, WITHOUT NOTICE.

Intel® Mobile Boards may contain design defects or errors known as errata which may cause the product to deviate from published specifications.

Current characterized errata are available on request.

E35035-001

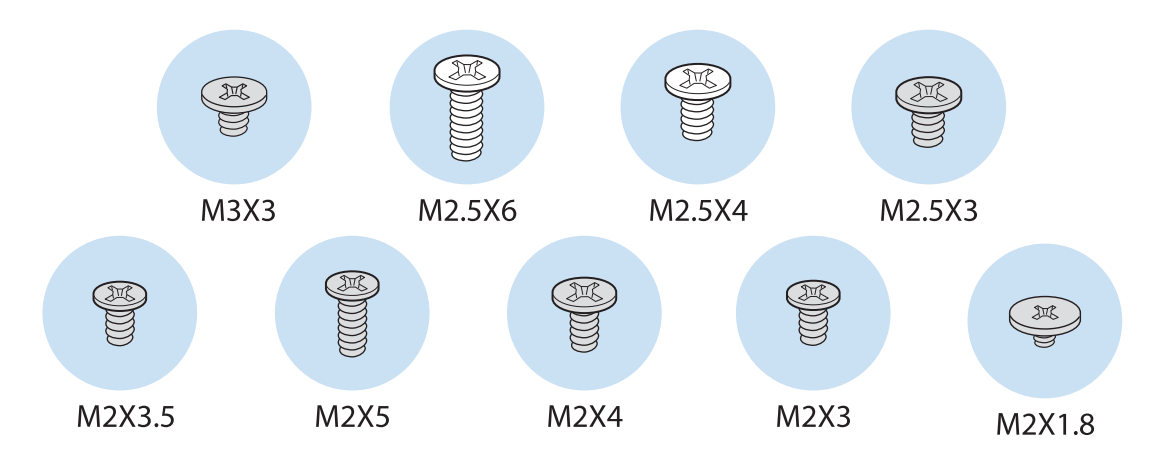


Important Note:
Chassis configurations may vary. You may need to refer to your chassis documentation during this integration process.

hardware identification guide

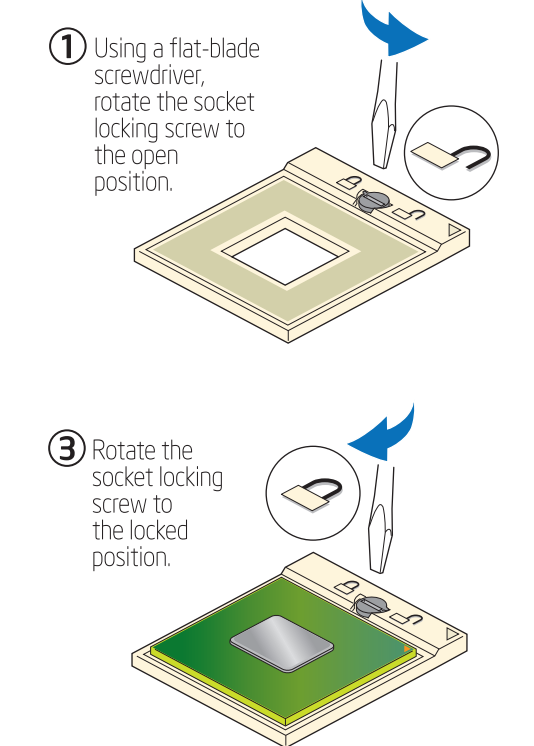
The following hardware is required to assemble your notebook. Refer to these illustrations to select the correct fastener(s) for each procedure included in this guide.

Important Note:
Fastener sizes and types are subject to change without notice.

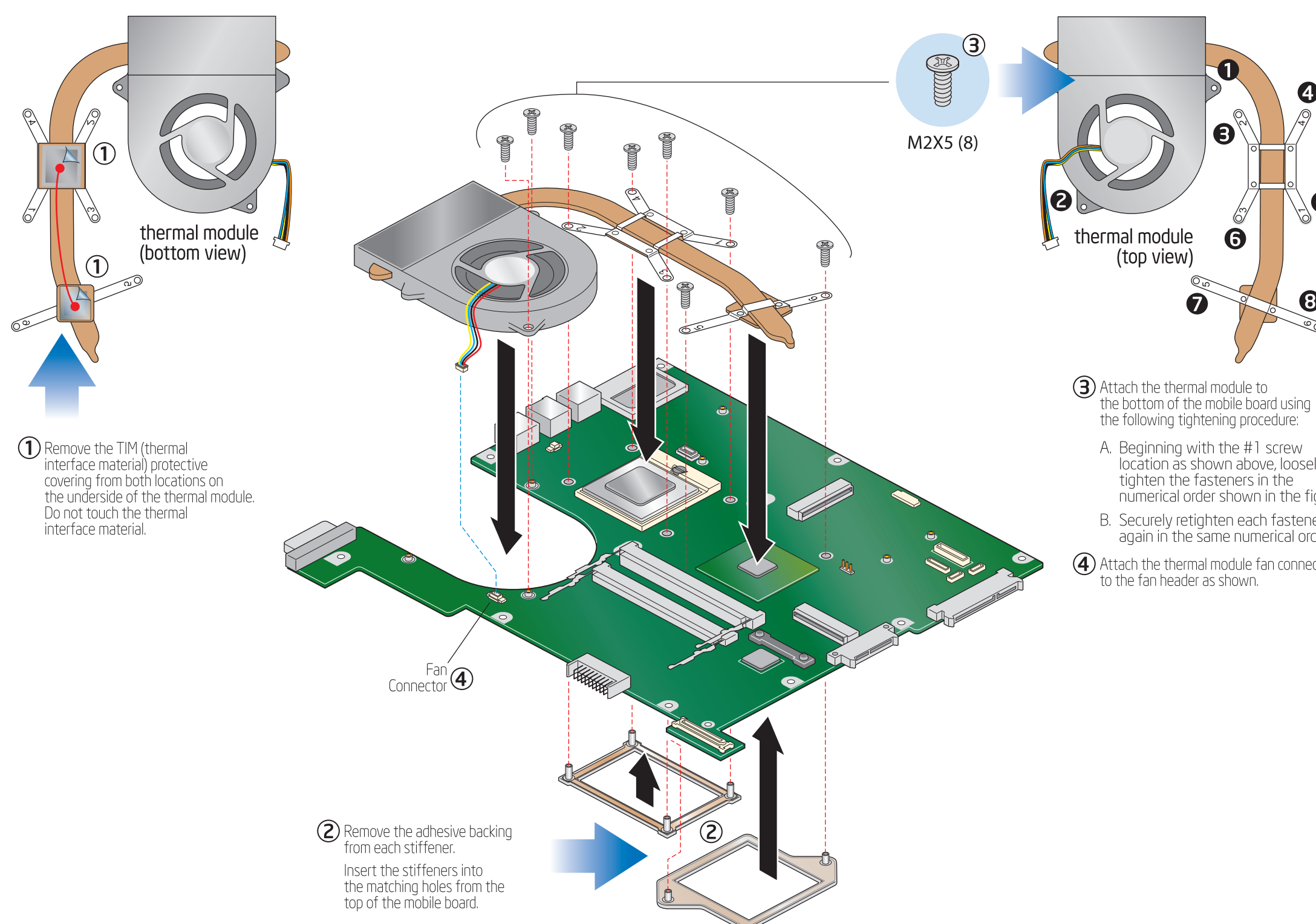


1 install a processor

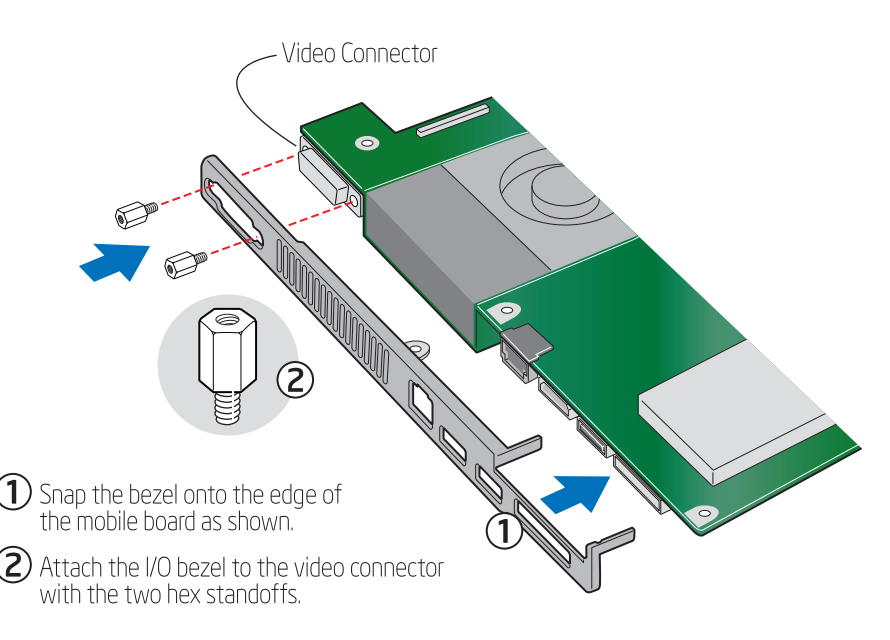
CAUTION:
Observe normal ESD procedures when handling the processor. When unpacking a processor, hold it by the edges to avoid touching the pins.



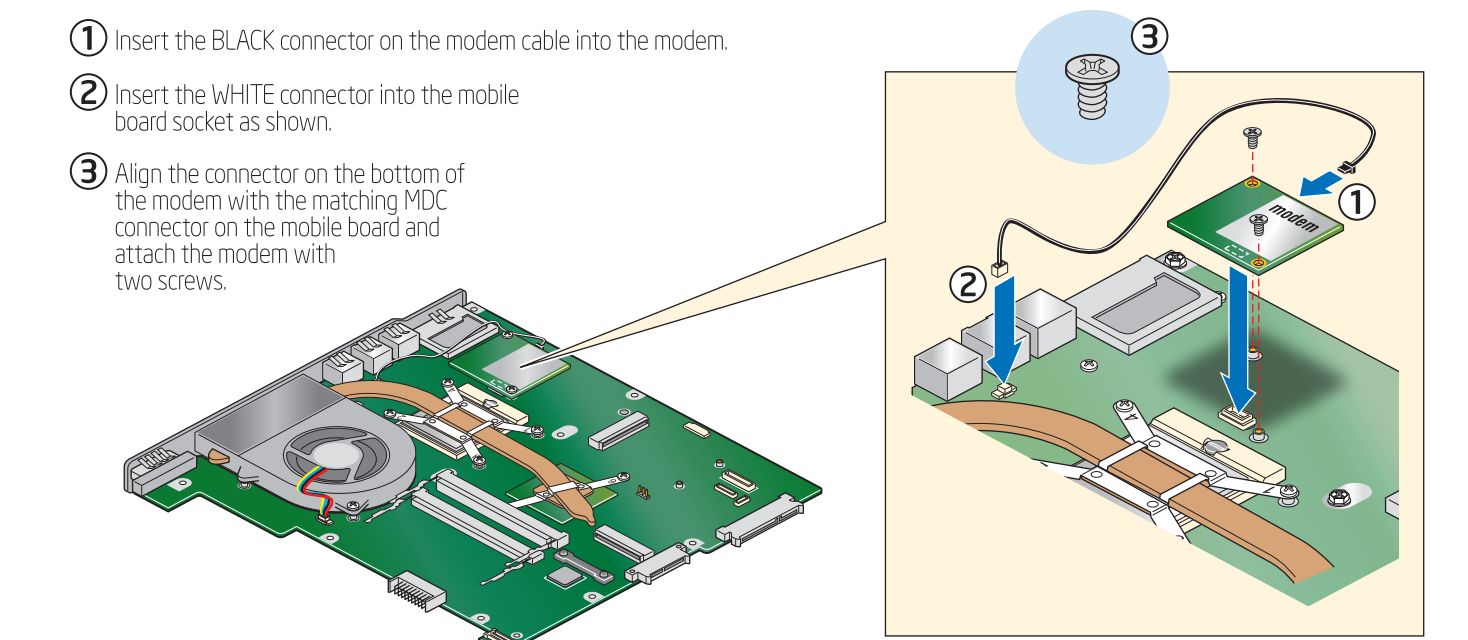
2 install the thermal module



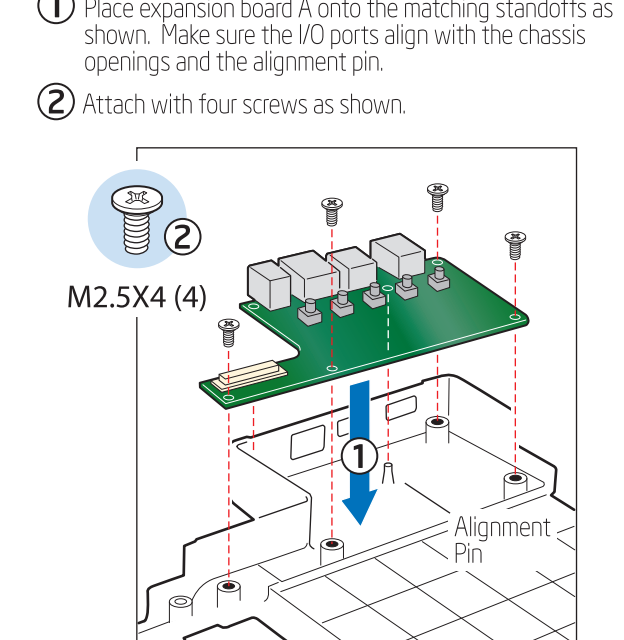
3 secure the I/O bezel to the mobile board



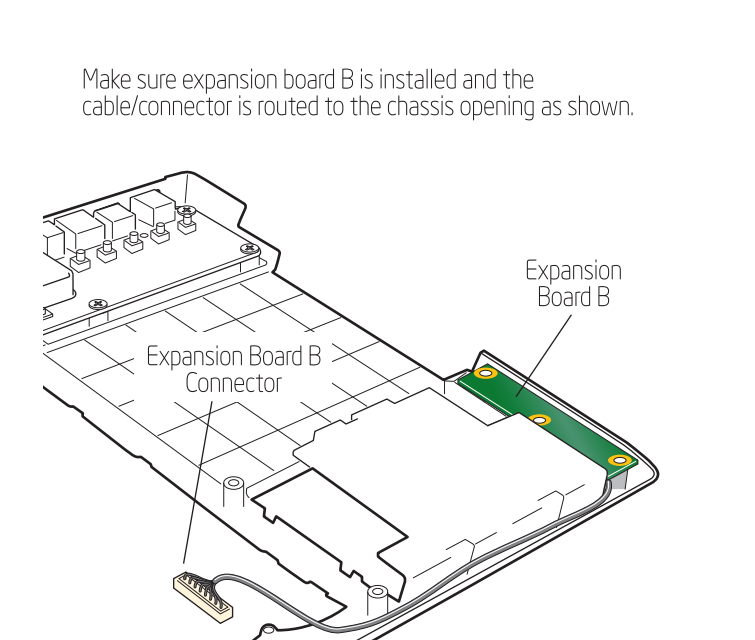
4 install a modem and connect the cable (optional)



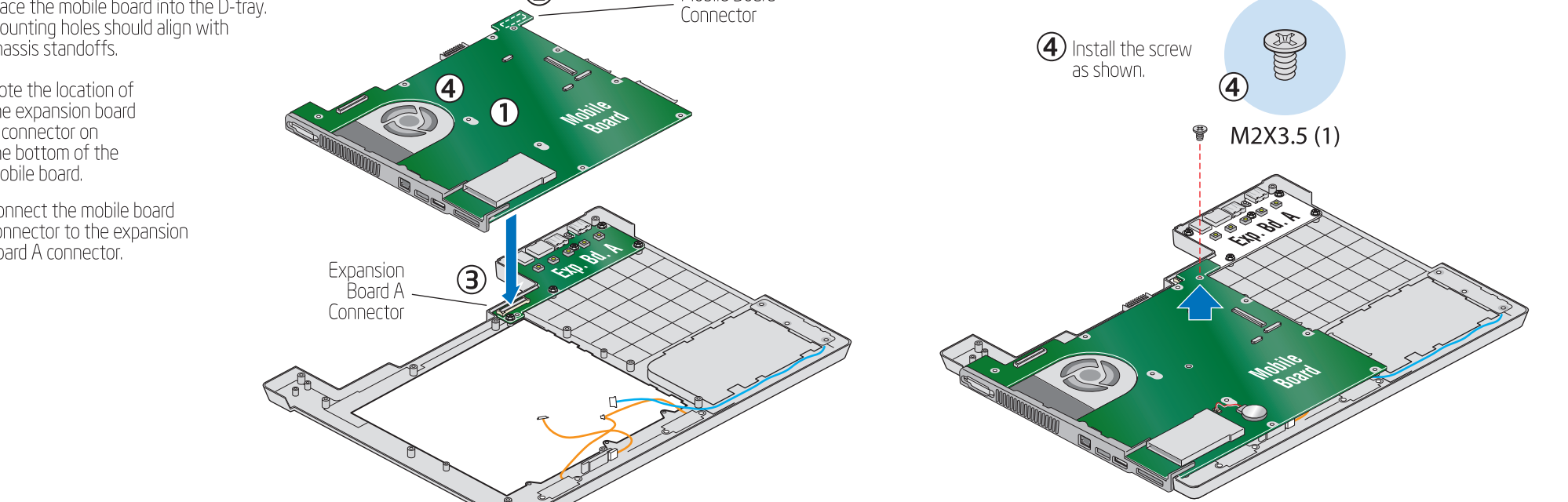
5 secure expansion board A to the D-tray



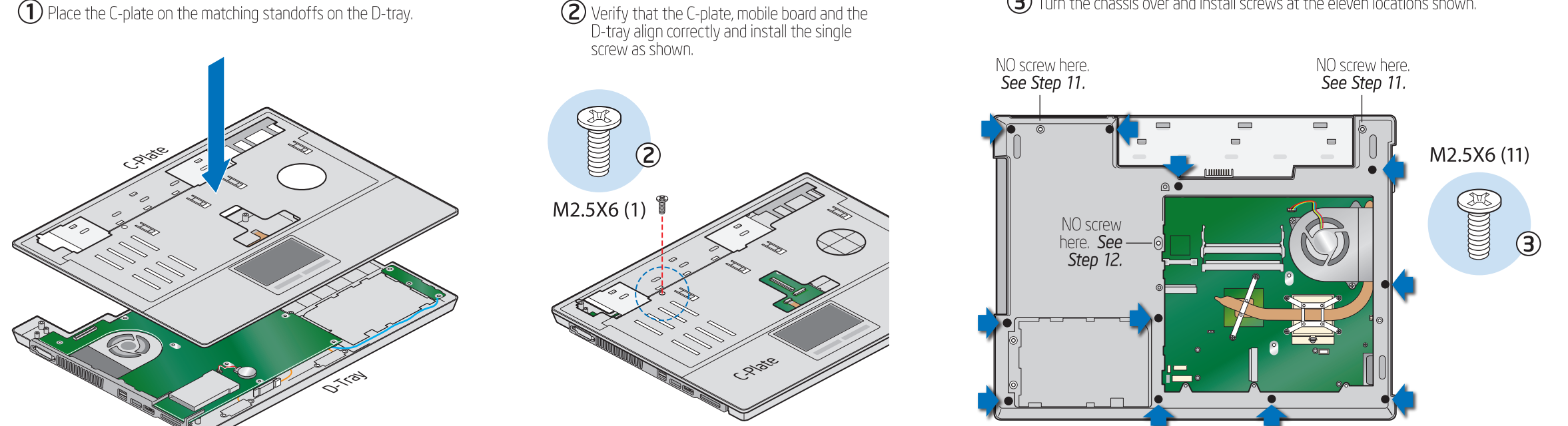
6 ensure that expansion board B is installed in the D-tray



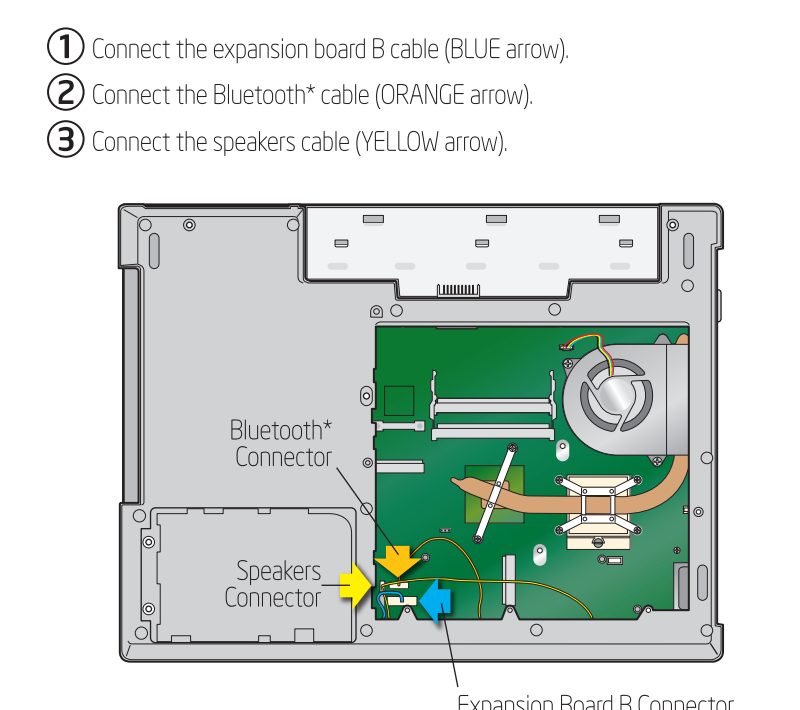
7 connect the mobile board to expansion board A



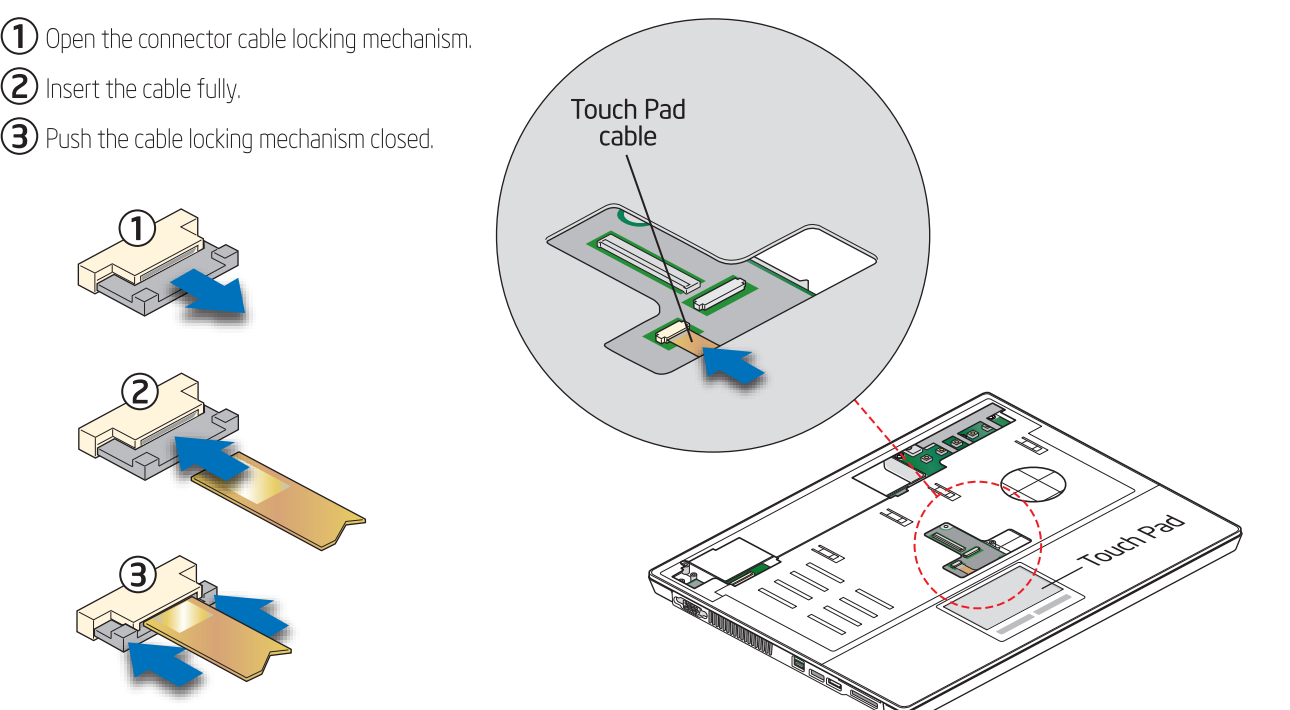
8 attach the C-plate to the D-tray



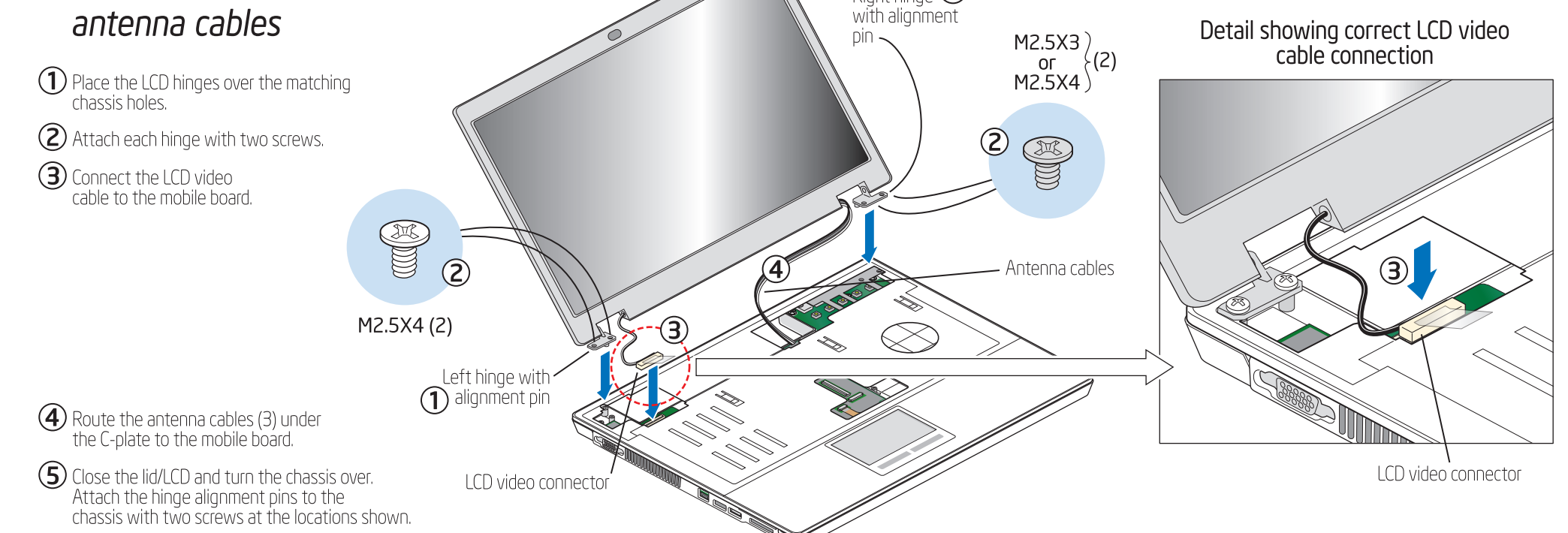
9 connect the expansion board B, Bluetooth*, and speakers cables



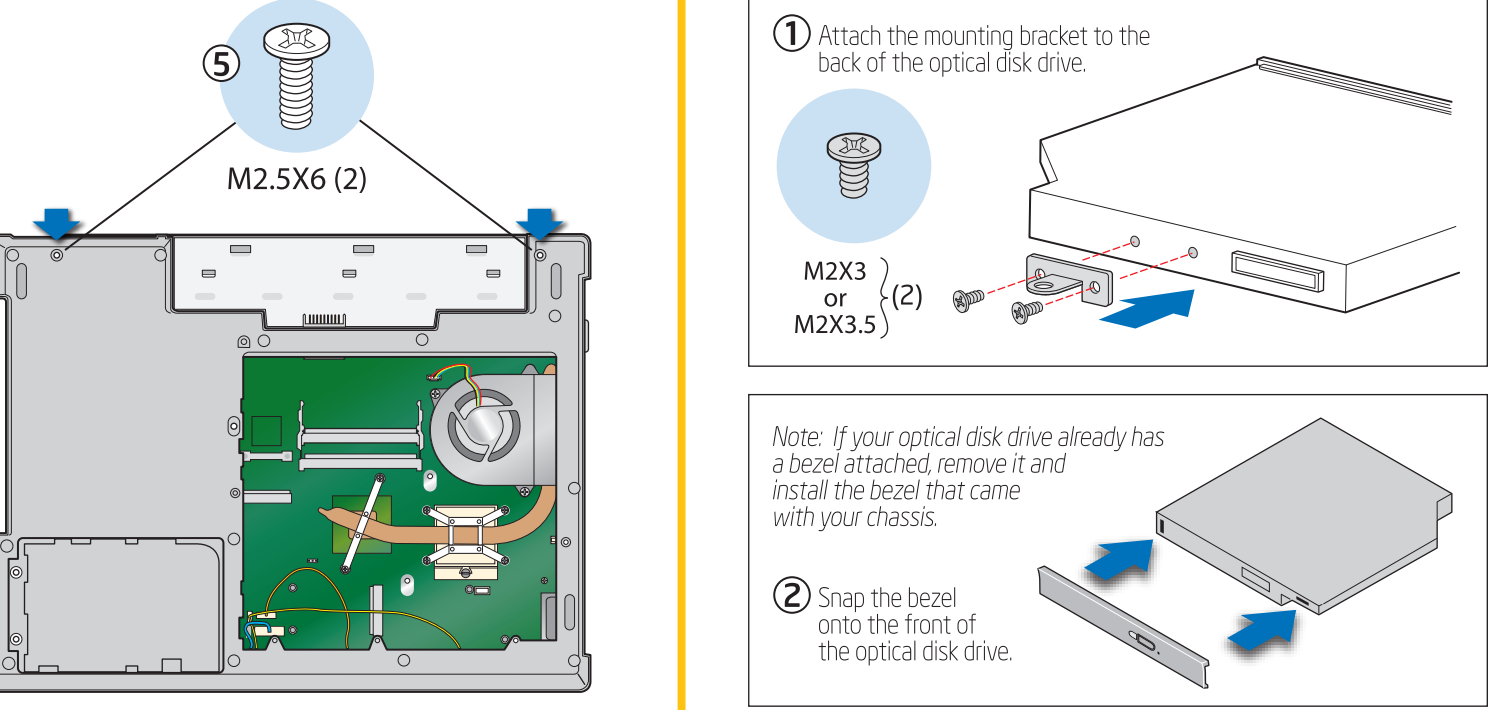
10 attach the touch pad cable



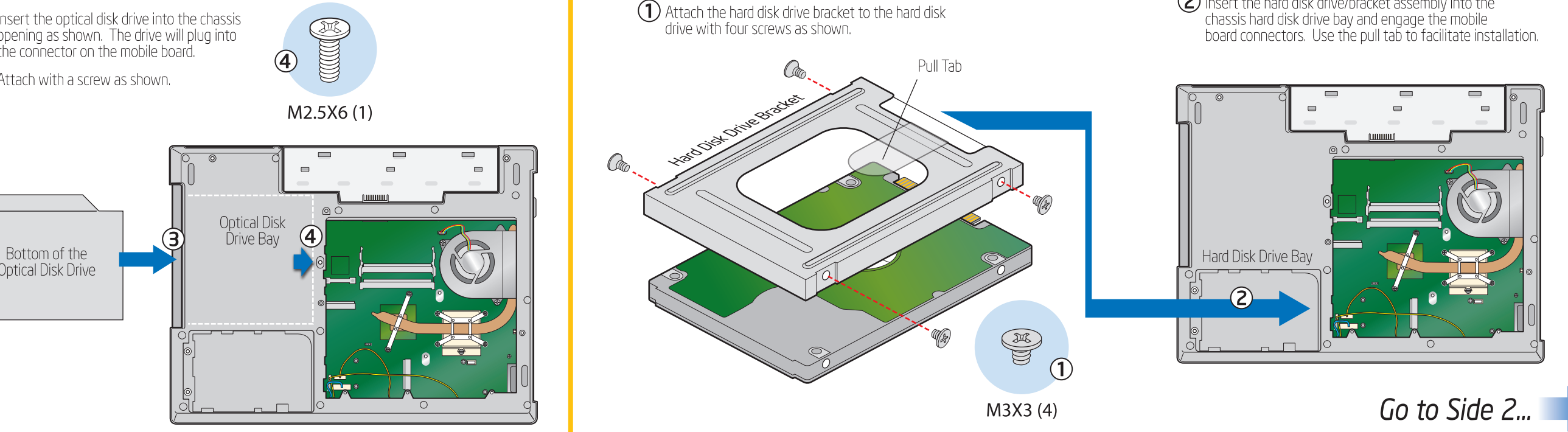
11 attach the lid/LCD, connect the LCD cable, and route the antenna cables



12 install an optical disk drive



13 install a hard disk drive



Go to Side 2...