

Intel® Mobile Board MGM45WU Integration Guide



overview

English - 中文 - 한국어 - 日本語 - Polski - Italiano - Français - Deutsch - Русский - Português (Brasil) - Español

This guide contains basic instructions for installing the mobile board. For more detailed information, refer to the Product Guide on the Intel® Express Installer DVD-ROM.

本指南包含安装移动主板的基本指导。有关更详细的信息，请参阅 Intel® Express Installer (英特尔® 快速安装程序) 数字视频光盘上的《产品指南》。본 안내서는 모바일 보드를 설치하기 위한 기본 지침을 제공합니다. 자세한 내용은 Intel® Express Installer DVD-ROM에 있는 제품 안내서를 참조하십시오. このガイドでは、モバイルボードをインストールするための基本手順を説明します。詳細は、Intel® Express Installer DVD-ROM に収録されている「Product Guide (製品ガイド)」を参照してください。

Niniejszy przewodnik zawiera podstawowe instrukcje dotyczące montażu płyty do komputerów przenośnych. Bardziej szczegółowe informacje znajdują się w Product Guide (Przewodniku po produkcie) na dysku DVD Intel® Express Installer.

Esta guía contiene las instrucciones de base para la instalación de la tarjeta para dispositivos móviles. Para obtener más información, consulte el Guía del producto que figura en el DVD-ROM Intel® Express Installer.

Diese Anleitung enthält grundlegende Informationen zur Installation des Motherboards für Notebooks. Genauere Informationen erhalten Sie im Product Guide auf der DVD-ROM des Intel® Express Installer.

Настоящее руководство содержит основные инструкции по установке мобильной платы. Более подробная информация приведена в Product Guide (руководстве к изделию), которое имеется на диске Intel® Express Installer DVD-ROM (DVD-диск Intel® для экспресс-установки).

Este guia contém instruções básicas para a instalação da placa móvel. Para obter informações mais detalhadas, consulte o Guia do produto no DVD-ROM Intel® Express Installer.

Caution: Remove the battery pack from the notebook chassis before you connect or disconnect cables or install or remove any board components. Failure to do this may result in equipment damage.

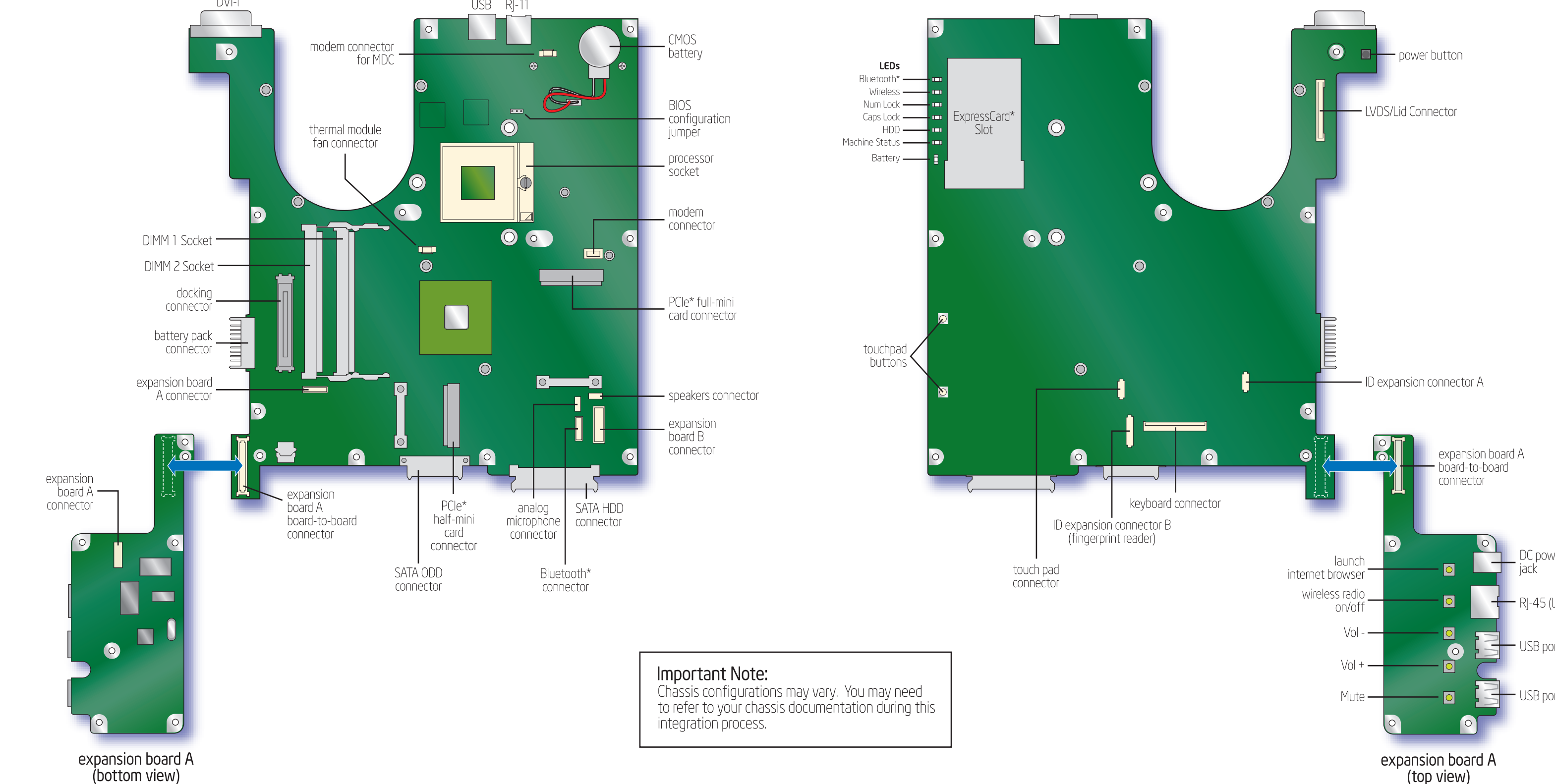
Use Only for Intended Applications: Intel Mobile Boards are evaluated as Information Technology Equipment (ITE) for use in notebook computers for use in homes, offices, schools, and similar locations.

Processor and Memory Support: For more information about processor and memory support, go to http://support.intel.com/.

Customer Support Links: View or download product support information from Intel's World Wide Web site: http://support.intel.com/support or view phone and email contacts at http://support.intel.com/support/feedback.htm

Information in this document is provided in connection with Intel® products. No license, express or implied, by estoppel or otherwise, to any intellectual property rights is granted by this document.

Intel® Mobile Boards may contain design defects or errors known as errata which may cause the product to deviate from published specifications.

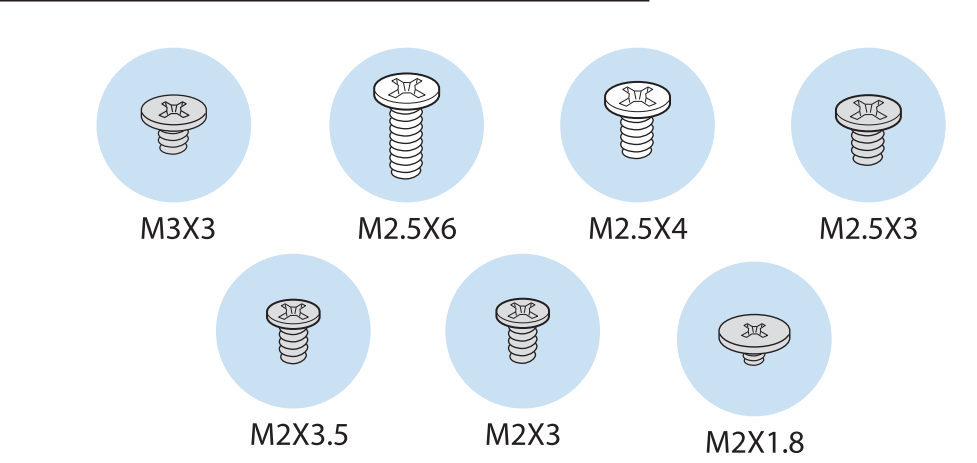


Important Note: Chassis configurations may vary. You may need to refer to your chassis documentation during this integration process.

hardware identification guide

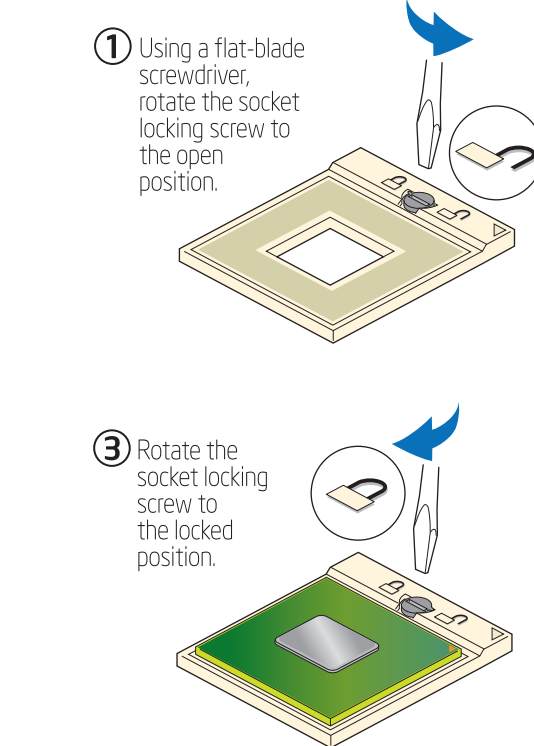
The following hardware is required to assemble your notebook. Refer to these illustrations to select the correct fastener(s) for each procedure included in this guide.

Important Note: Fastener sizes and types are subject to change without notice.

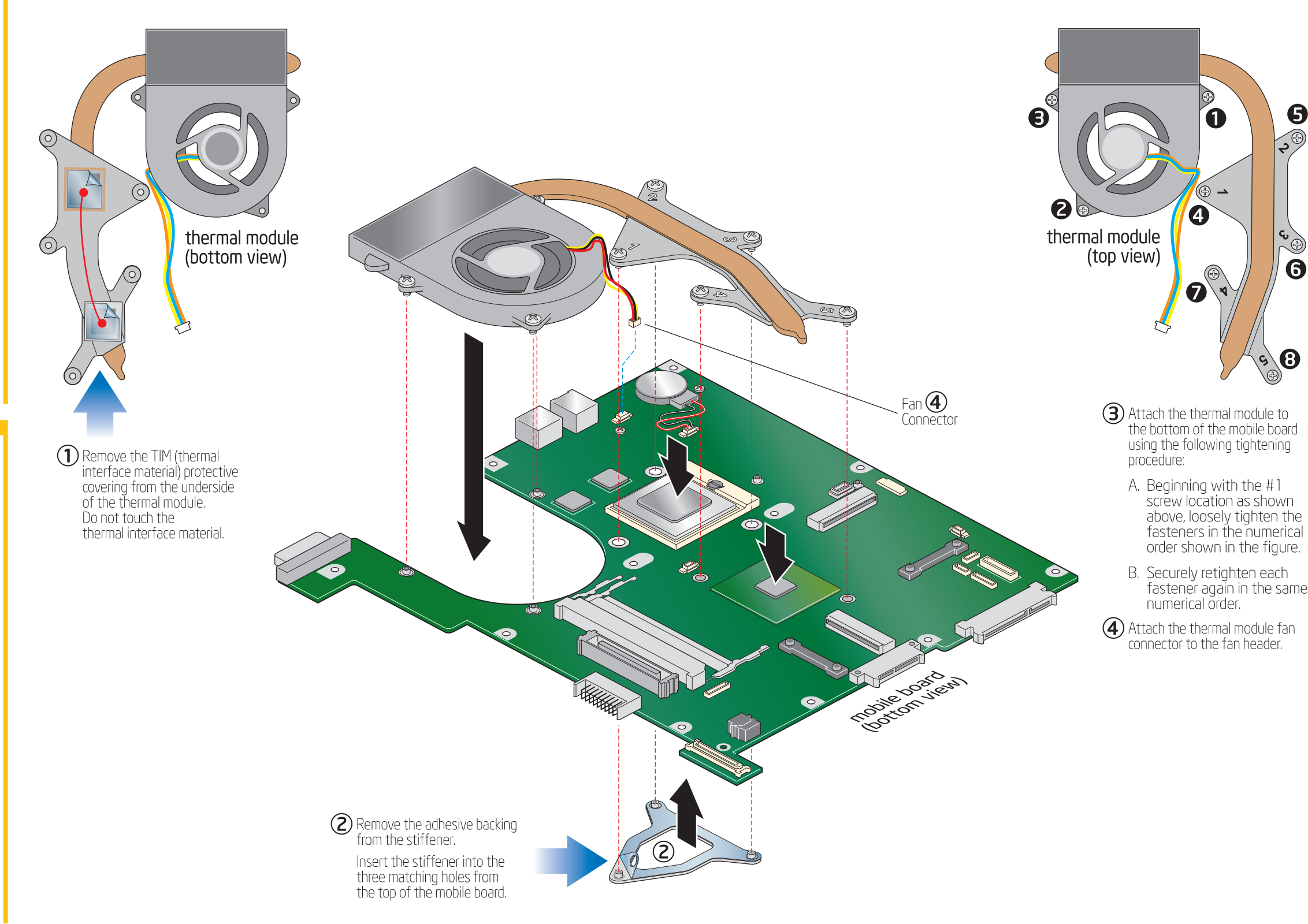


1 install a processor

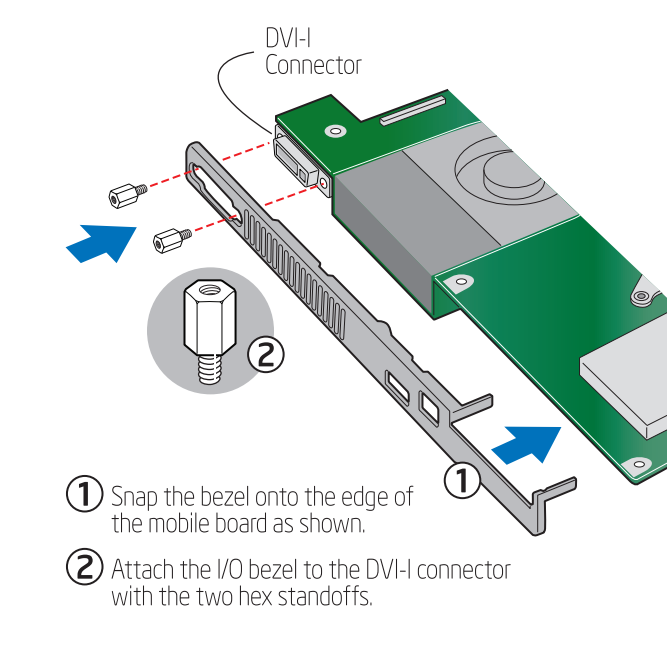
CAUTION: Observe normal ESD procedures when handling the processor. When unpacking a processor, hold it by the edges to avoid touching the pins.



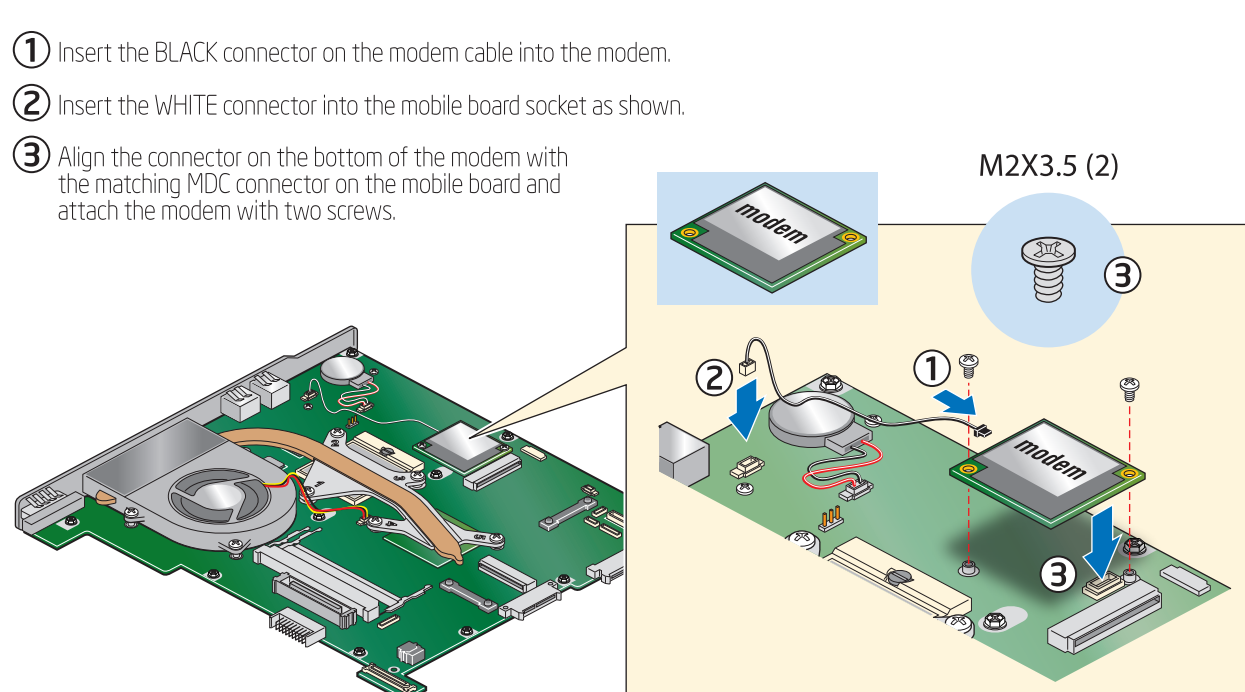
2 install the thermal module



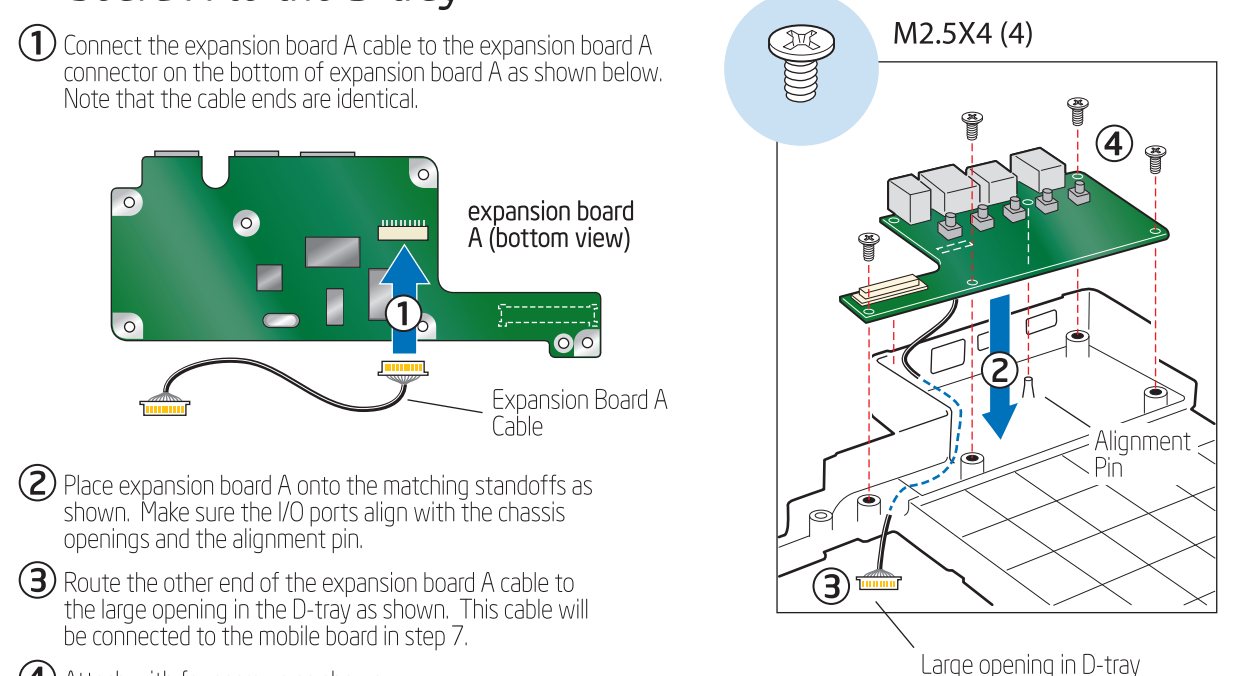
3 secure the I/O bezel to the mobile board



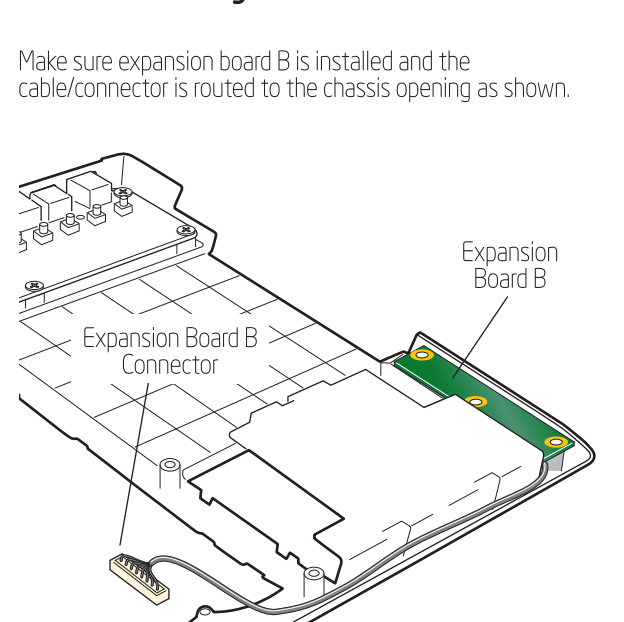
4 install a modem and connect the cable (optional)



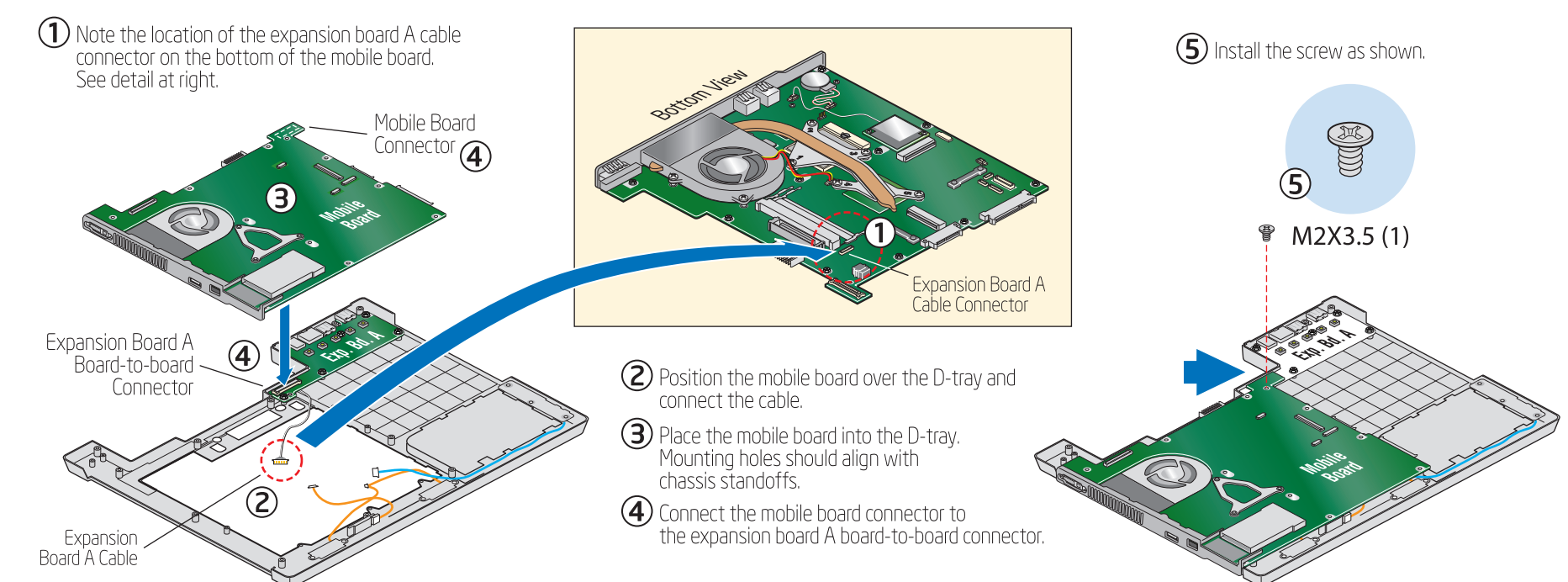
5 secure expansion board A to the D-tray



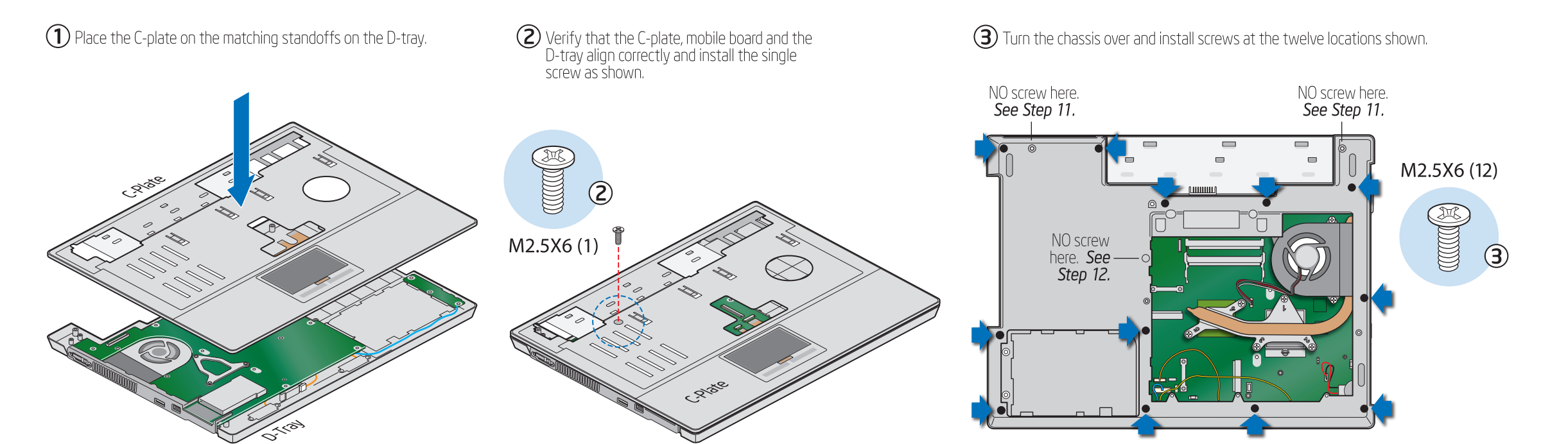
6 ensure that expansion board B is installed in the D-tray



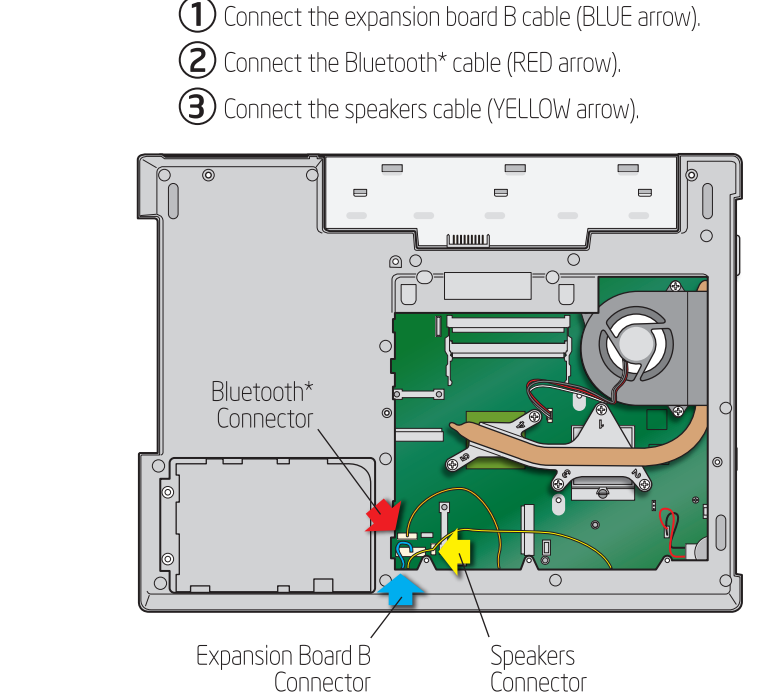
7 connect the mobile board to expansion board A



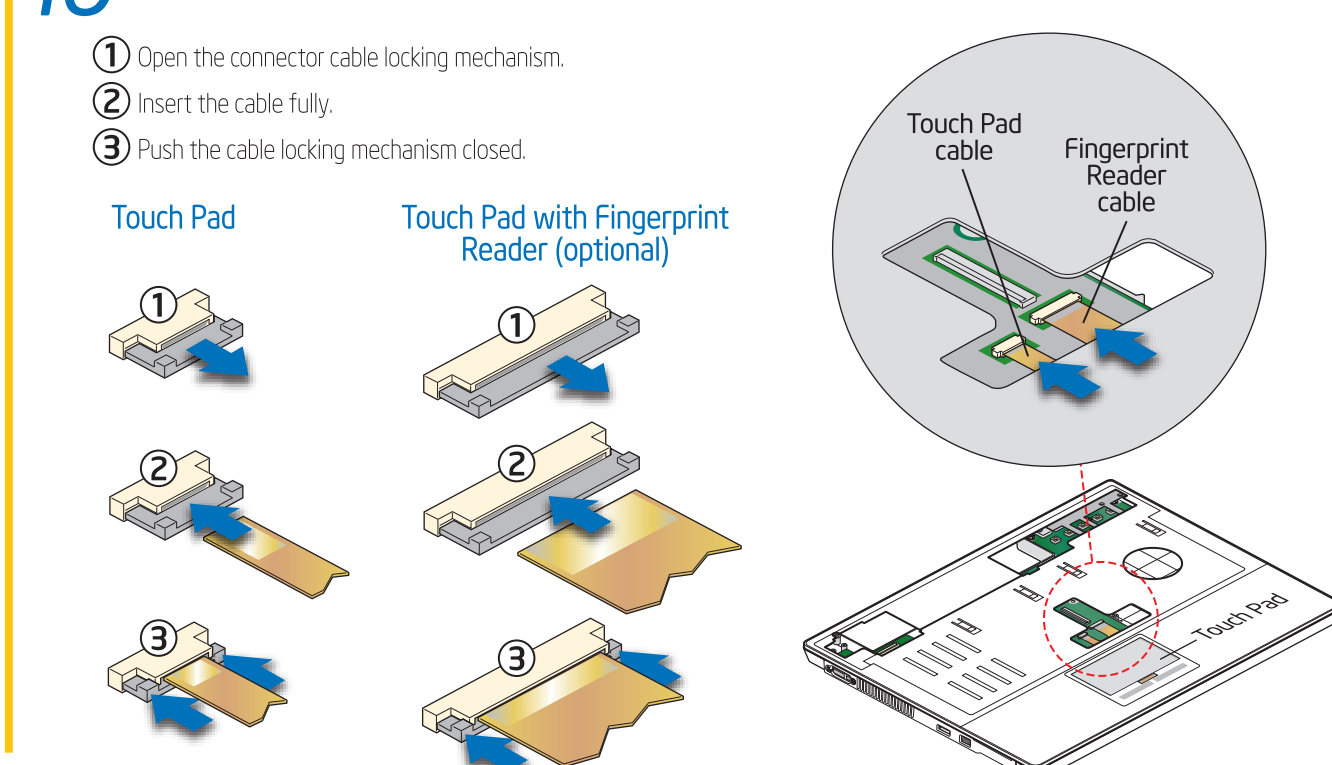
8 attach the C-plate to the D-tray



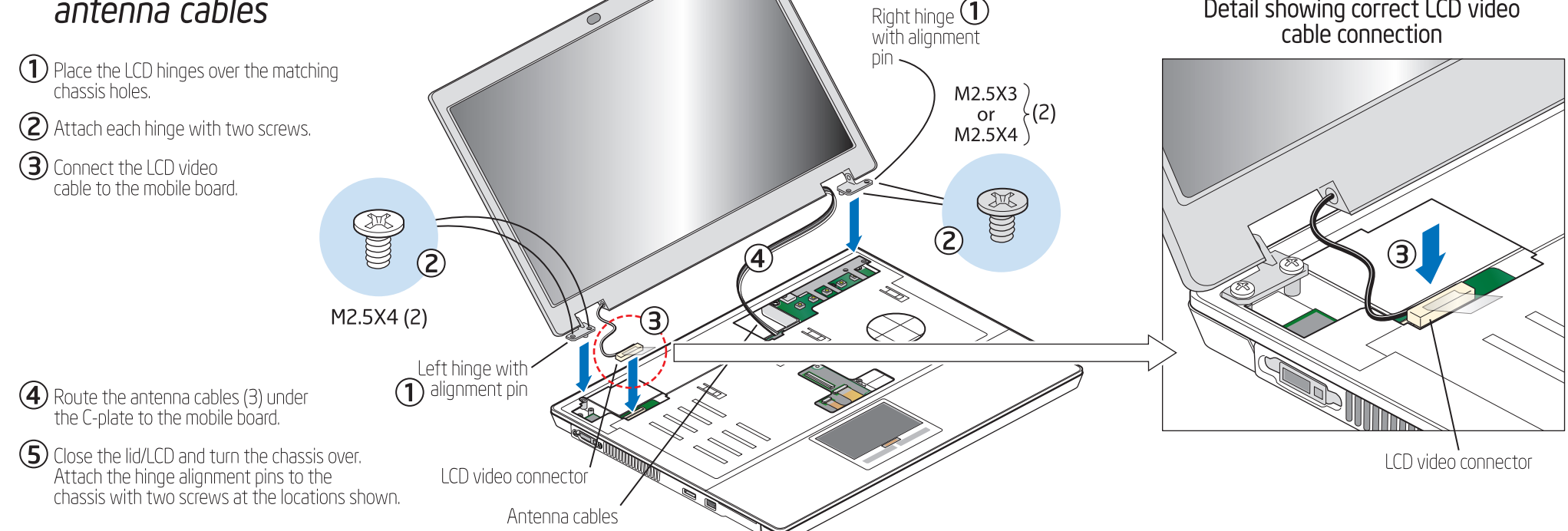
9 connect the expansion board B, Bluetooth*, and speakers cables



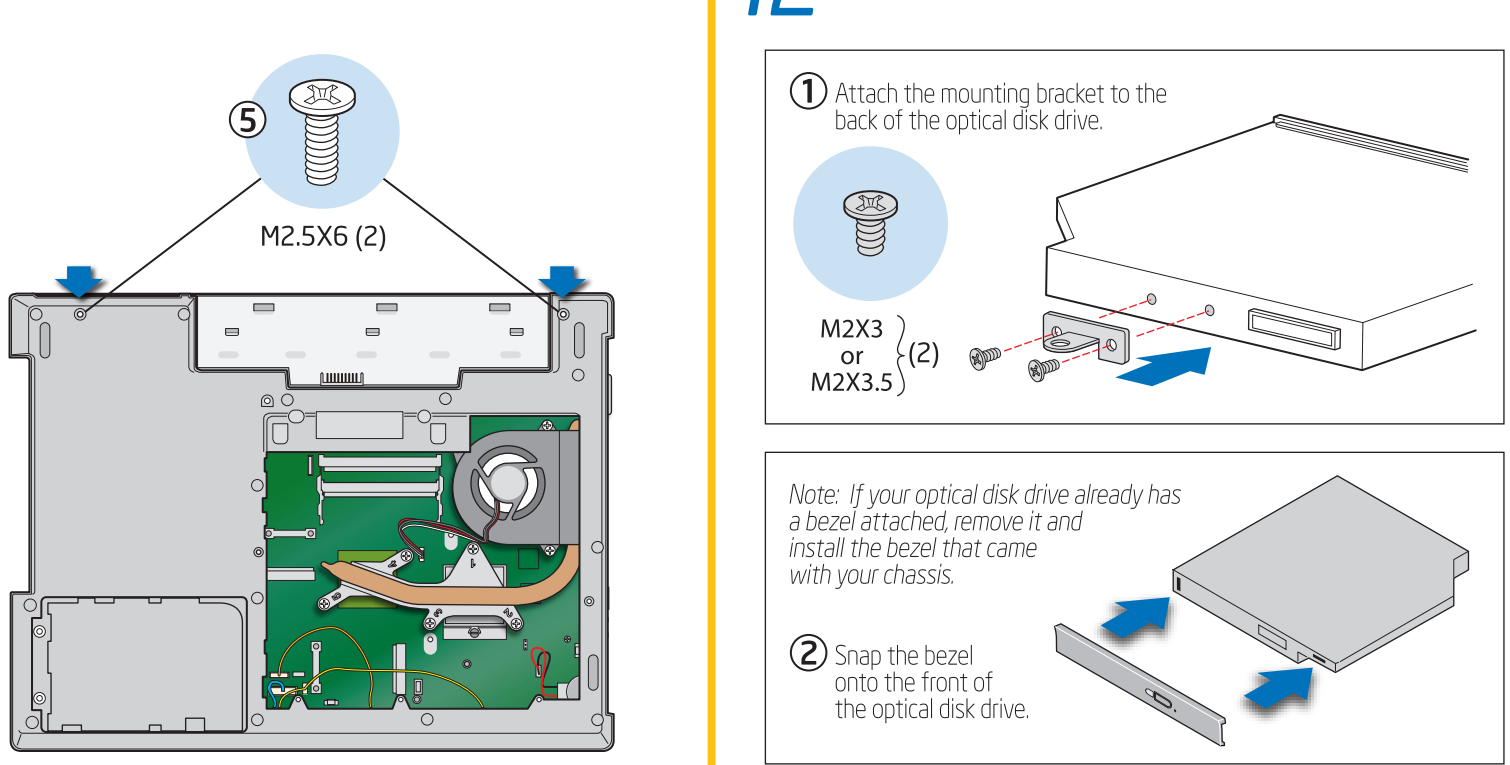
10 attach the touch pad cable(s)



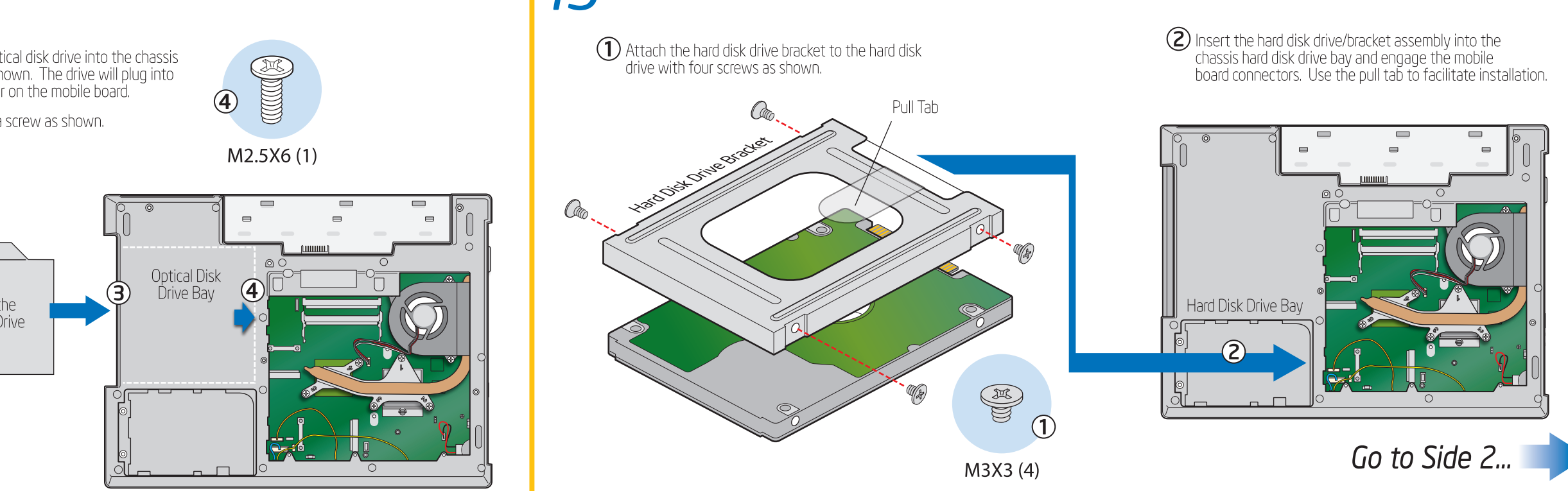
11 attach the lid/LCD, connect the LCD cable, and route the antenna cables



12 install an optical disk drive



13 install a hard disk drive



Go to Side 2...