



Intel® Entry Server Chassis SC5275-E Quick Start User's Guide



Thank you for buying the Intel® Entry Server Chassis SC5275-E. The following information will help you to prepare your chassis for integration with your selected Intel® Server Board. The Intel® Entry Server Chassis SC5275-E is designed for use with the Intel® Server Boards SE7525GP2, SE7320SP2 and SE7520BD2.

These guides and other supporting documents (including a list of supported server boards) are located on the web at <http://support.intel.com/support/motherboards/server>.

If you are not familiar with ESD (Electrostatic Discharge) procedures used during system integration, please see the Intel® Entry Server Chassis SC5275-E User's Guide, available on the CD or at <http://support.intel.com/go/serverbuilder>.

Building Value With Intel Server Products, Programs and Support

Get the high-value server solutions you need by taking advantage of the outstanding value Intel provides to system integrators:

- High-quality server building blocks
- Extensive breadth of server building blocks
- Solutions and tools to enable e-Business
- Intel® Server Management
- Comprehensive training services
- Worldwide 24x7 technical support [AT&T Country Code + 866-655-6565]¹
- World-class service, including a three-year limited warranty and Advanced Warranty Replacement¹

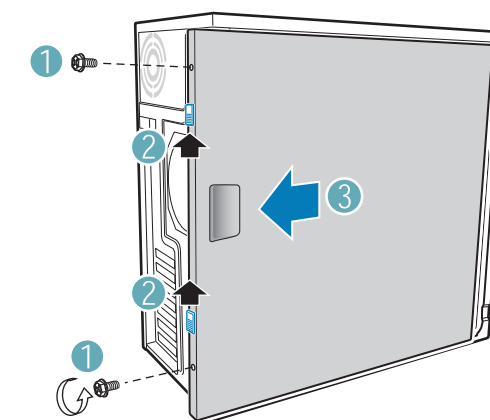
For more information on Intel's added-value server offerings, visit the Intel® ServerBuilder website at: www.intel.com/go/serverbuilder

Intel® ServerBuilder is your one-stop shop for information about all of Intel's Server Building Blocks such as:

- Product information, including product briefs and technical product specifications
- Sales tools, such as videos and presentations
- Training information, such as the Intel® Online Learning Center
- Support Information and much more

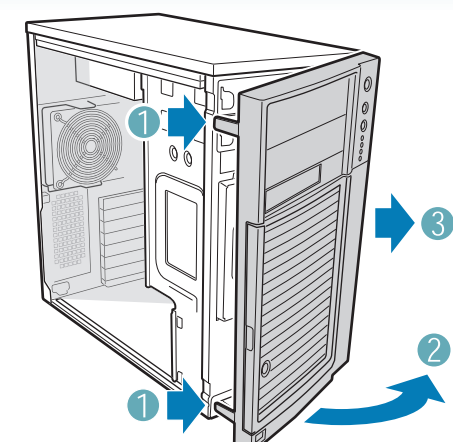
¹Available only to Intel® Channel Program Members, part of the Intel® e-Business Network.

1 Remove the Side Cover



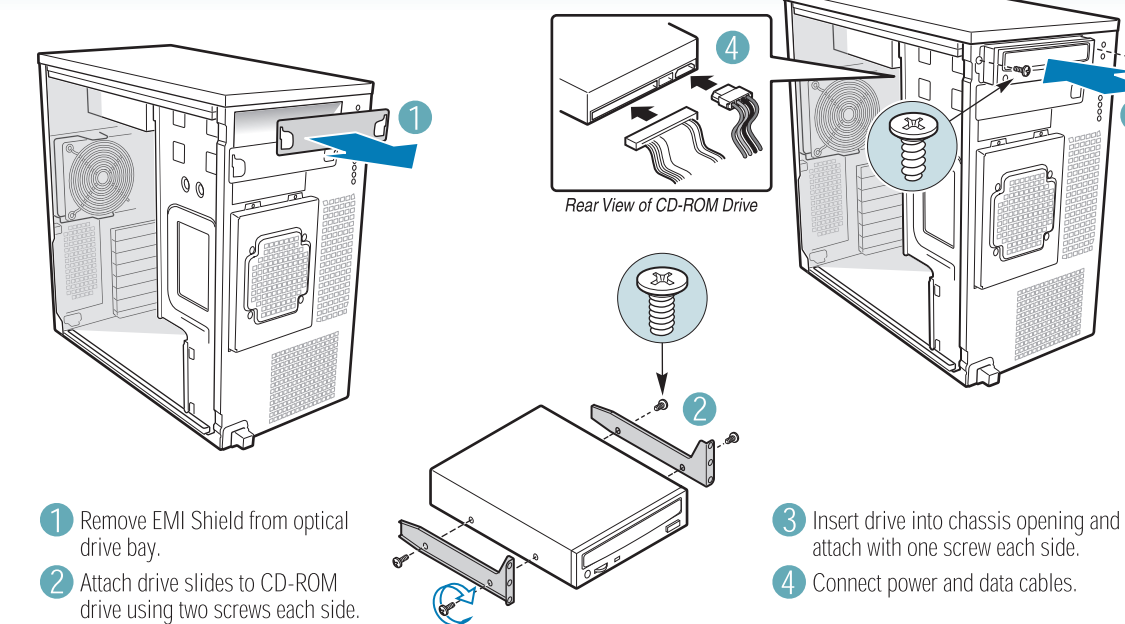
- 1 Remove the two shipping screws.
- 2 Slide the two thumb latches to the OPEN position.
- 3 Slide the top cover rearward and remove.

2 Remove the Bezel



- 1 Disengage the two bezel tabs from the chassis.
- 2 Rotate left side of bezel assembly outward slightly.
- 3 Disengage the latches that attach the right side of the bezel to the chassis and remove.

3 Install the CD-ROM Drive



- 1 Remove EMI Shield from optical drive bay.
- 2 Attach drive slides to CD-ROM drive using two screws each side.
- 3 Insert drive into chassis opening and attach with one screw each side.
- 4 Connect power and data cables.

Warning

Read all caution and safety statements in this document before performing any of the instructions. Also see the *Intel® Server Board and Server Chassis Safety Information* document at: <http://support.intel.com/support/motherboards/server/safecert.htm> for complete safety information.

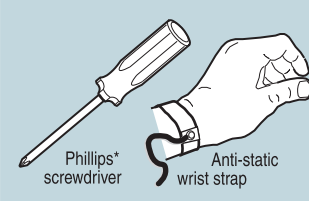
Warning

Installation and service of this product to be performed only by qualified service personnel to avoid risk of injury from electrical shock or energy hazard.

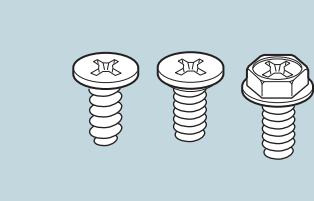
Caution

Observe normal ESD (Electrostatic Discharge) procedures during system integration to avoid possible damage to server board and/or other components.

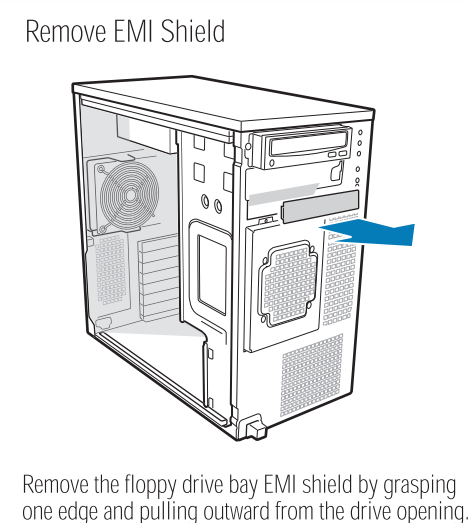
Tools Required



Fastener Identification Guide

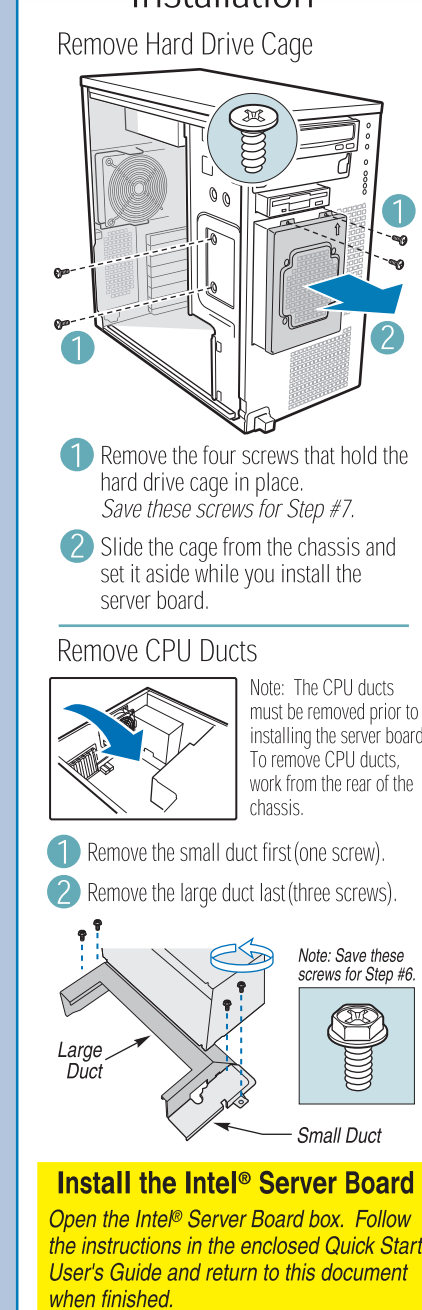


4 Install a Floppy Drive



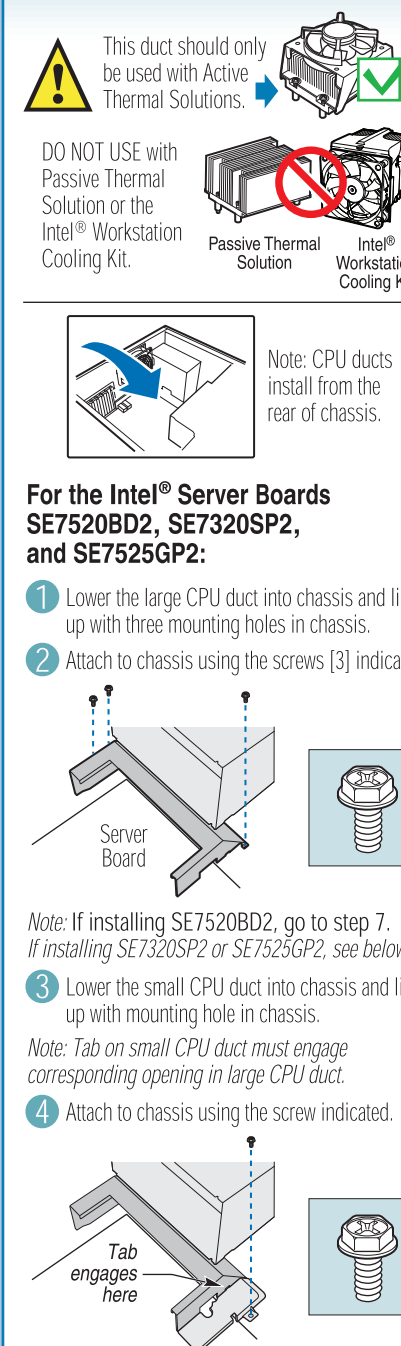
- Remove the floppy drive bay EMI shield by grasping one edge and pulling outward from the drive opening.
- Install Floppy Drive
- 1 Slide the drive into the chassis along the built-in rails.
 - 2 Secure the drive to the left side of the chassis with two screws.
 - 3 Connect the power and data cables to the rear of the drive.

5 Server Board Installation



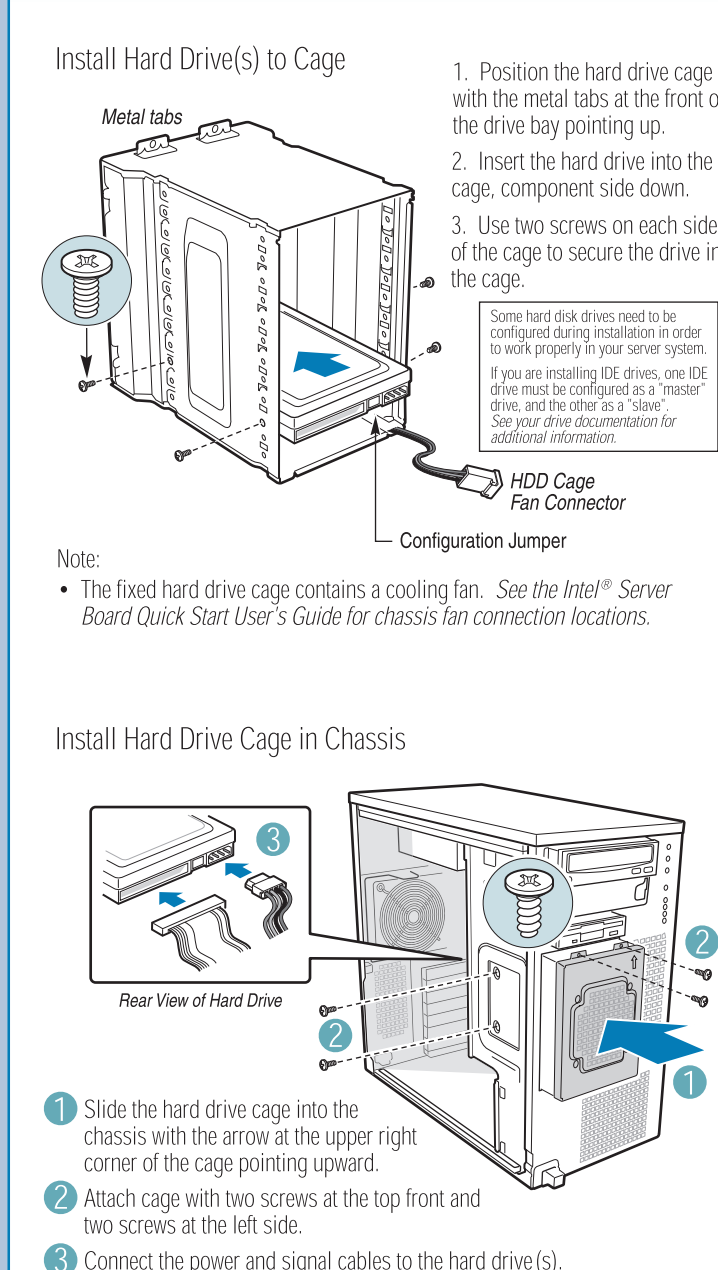
- Remove Hard Drive Cage
- 1 Remove the four screws that hold the hard drive cage in place. Save these screws for Step #7.
 - 2 Slide the cage from the chassis and set it aside while you install the server board.
- Remove CPU Ducts
- Note: The CPU ducts must be removed prior to installing the server board. To remove CPU ducts, work from the rear of the chassis.
- 1 Remove the small duct first (one screw).
 - 2 Remove the large duct last (three screws).
- Install the Intel® Server Board
- Open the Intel® Server Board box. Follow the instructions in the enclosed Quick Start User's Guide and return to this document when finished.

6 Install CPU Duct



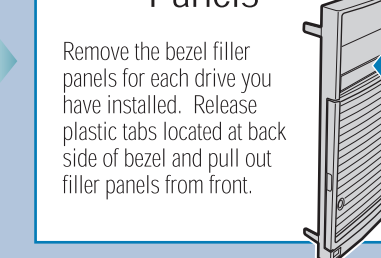
- This duct should only be used with Active Thermal Solutions.
- DO NOT USE with Passive Thermal Solution or the Intel® Workstation Cooling Kit.
- Note: CPU ducts install from the rear of chassis.
- For the Intel® Server Boards SE7520BD2, SE7320SP2, and SE7525GP2:
- 1 Lower the large CPU duct into chassis and line up with three mounting holes in chassis.
 - 2 Attach to chassis using the screws [3] indicated.
- Note: If installing SE7520BD2, go to step 7. If installing SE7320SP2 or SE7525GP2, see below.
- 3 Lower the small CPU duct into chassis and line up with mounting hole in chassis.
 - 4 Attach to chassis using the screw indicated.

7 Install a Fixed Hard Drive



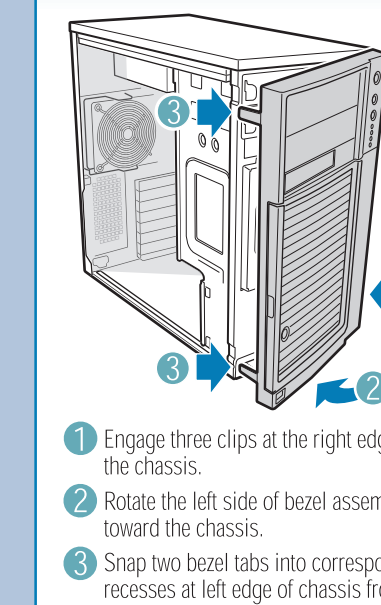
- Install Hard Drive(s) to Cage
1. Position the hard drive cage with the metal tabs at the front of the drive bay pointing up.
 2. Insert the hard drive into the cage, component side down.
 3. Use two screws on each side of the cage to secure the drive in the cage.
- Note: Some hard disk drives need to be configured during installation in order to work properly in your server system. If you are installing IDE drives, one IDE drive must be configured as a "master" drive, and the other as a "slave". See your drive documentation for additional information.
- Install Hard Drive Cage in Chassis
- 1 Slide the hard drive cage into the chassis with the arrow at the upper right corner of the cage pointing upward.
 - 2 Attach cage with two screws at the top front and two screws at the left side.
 - 3 Connect the power and signal cables to the hard drive(s).

8 Remove Filler Panels



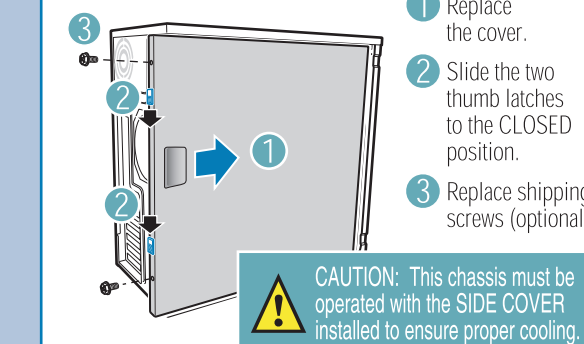
- Remove the bezel filler panels for each drive bay you have installed. Release plastic tabs located at back side of bezel and pull out filler panels from front.

9 Install the Bezel



- 1 Engage three clips at the right edge of the chassis.
- 2 Rotate the left side of bezel assembly toward the chassis.
- 3 Snap two bezel tabs into corresponding recesses at left edge of chassis front panel.

10 Closing the System



- 1 Replace the cover.
 - 2 Slide the two thumb latches to the CLOSED position.
 - 3 Replace shipping screws (optional).
- CAUTION: This chassis must be operated with the SIDE COVER installed to ensure proper cooling.

1. Control Panel
2. Optical Drive(s)
3. Floppy Drive
4. HDD Cage Fan
5. Lockable Drive Door
6. Front Panel USB
7. Server Board
8. Intrusion Switch
9. Rear Chassis Fan
10. Power Supply



Accessories and Order Codes	
SCSI Hot Swap Drive Bay Upgrade Kit	AXX6SCSIDB
SATA Hot Swap Drive Bay Upgrade Kit	AXX6SATADB
ICMB Board Assembly Kit*	AXX2ICMBKIT
External SCSI Adapter Cable*	AXXEXTSCICBL
Intel Workstation Cooling Kit	APTZWKCOOLKIT

A complete list of accessories and spares can be found at: www.intel.com/go/serverbuilder
^{*}Not available for use with all server boards.

C50276-002

