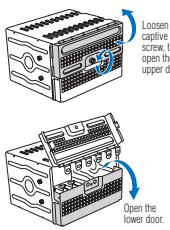
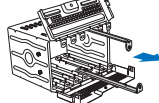


14 Install Hard Drives into Fixed Drive Bay

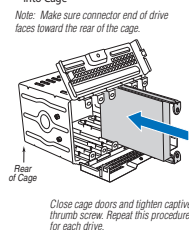
A. Open Cage Access Doors



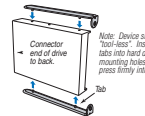
B. Remove Device Slides



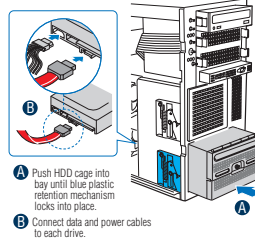
D. Insert Drive/Slide Assembly into Cage



C. Install Slides to Hard Drive

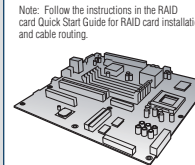


15 Install Fixed Cage into Chassis

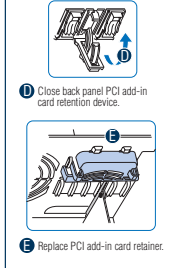
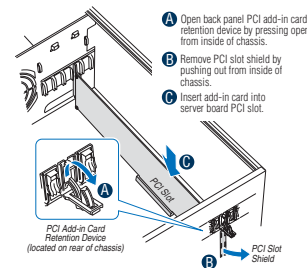


16 Install Server Board

Open the Intel® Server Board box. Follow the instructions in the enclosed Intel® Server Board Quick Start User's Guide and return to this document when finished.

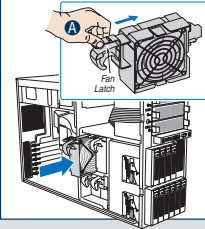


17 Install Add-in Cards



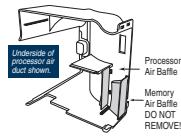
18 Re-install Hot Swap Fans (SC5400LX only)

A Slide each fan into the chassis until the latch locks into place.



19 Memory Air Baffle Configuration

This memory air baffle is REQUIRED for all Intel® Server Boards currently designated for this chassis. This baffle ensures proper cooling of installed memory DIMMs.

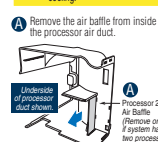


20 Re-install Air Ducts

Configure Processor Air Duct for Two Processors:

Note: This step only applies if your system has two processors. If only one processor is installed, leave the air baffle in place.

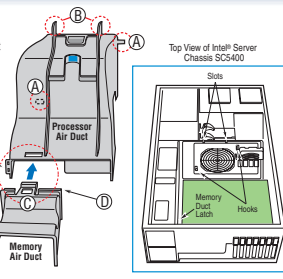
CAUTION: For a one-processor configuration, the air baffle must be installed to ensure proper cooling.



Read this Before Installing Air Ducts!

Note: Before installing the two air ducts, it is important to view the features that interconnect or latch.

- A These two tabs slide into matching hooks on the chassis center wall.
- B These two tabs slide into matching slots on the top edge of the chassis center wall.
- C This large tab on the memory air duct interlocks with the matching slot on the processor duct.
- D This edge of the memory duct sits on top of the processor duct.
- E Two small tabs on the memory duct insert into matching slots on the processor duct.
- F Memory duct latching tab.
- G Push this tab to release the memory duct from the chassis wall.



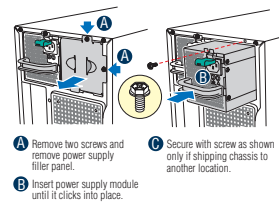
Install Processor and Memory Air Ducts

- 1 Install the processor air duct first. Make sure that tabs engage their matching chassis hooks before inserting tabs into chassis slots.
- 2 Install the memory air duct last. Holding the large-tab end at a downward angle, insert the large tab from the underside of the processor duct. Then rotate the memory duct downward until the two small tabs engage and the memory duct snaps into place at.

Note: Use care to avoid pinching wires and cables.

21 Install Additional Hot Swap Power Supply Module (optional)

Note: If your chassis has a fixed power supply, go to Step 22.

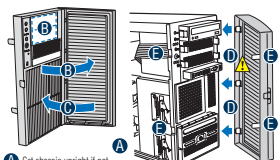


22 Rackmount Configuration (optional)

If you intend to configure your server as a pedestal system, disregard this step.

If you intend to configure your server as a rack mount system, go to the instructions that came with your rack mount kit to complete your server assembly.

23 Re-install Bezel Assembly



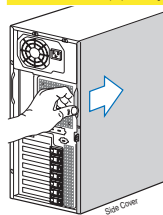
- A Set chassis upright if not already in upright position.
- B Open the front door of the bezel assembly and remove bezel filler panel(s) that correspond to installed devices.
- C Close the outer bezel door.
- D Fit right edge of bezel assembly against front of chassis and engage plastic bezel hooks into raised metal slots at chassis edge.

CAUTION: Do not attach bezel assembly to chassis at MORE than a 40 degree angle.

E Rotate bezel assembly toward chassis and latch two plastic tabs on left side of bezel assembly to chassis.

24 Replace Side Cover

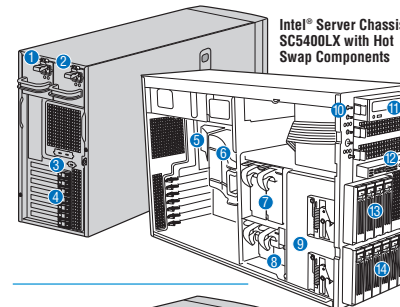
CAUTION: This chassis must be operated with the SIDE COVERS installed to ensure proper cooling.



Re-install side cover and latch securely.

Reference

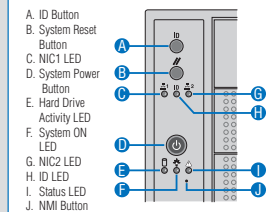
Chassis Features and Components



Intel® Server Chassis SC5400LX with Hot Swap Components

1. Hot Swap Power Supply
2. Second Hot Swap Power Supply (accessory)
3. Rear Serial-B Connector
4. PCI Add-in Card Panel
5. Memory Air Duct
6. Processor Air Duct
7. Hot Swap Fans - Large (2)
8. Hot Swap Fans - Small (2)
9. Hard Disk Drive Cage Release Mechanisms (2)
10. Front Panel Controls
11. 5.25-inch Device Bays (3)
12. Front Panel USB/Serial B
13. Hot Swap Drive Cage - 4 Drive (accessory)
14. Hot Swap Drive Cage - 6 Drive (accessory)

Front Panel Controls and Indicators

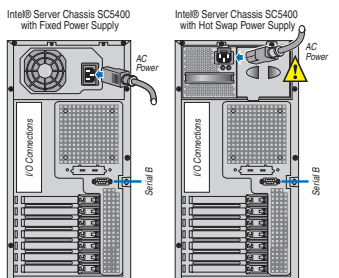


- A. ID Button
- B. System Reset Button
- C. NIC1 LED
- D. System Power Button
- E. Hard Drive Activity LED
- F. System ON LED
- G. NIC2 LED
- H. ID LED
- I. Status LED
- J. NMI Button

25 Finishing Up

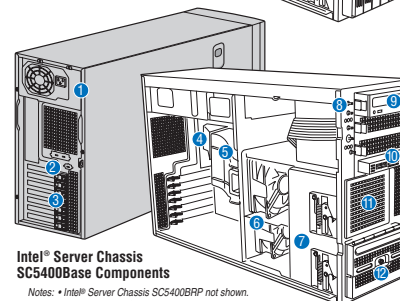
1. See your Intel® Server Board Quick Start User's Guide to connect your keyboard, mouse, video, and other I/O cables.
2. Connect the AC power cable last.

CAUTION: 830 watt and 670 watt power supplies require a 16-gauge power cord.



Accessories and Order Codes	
Rack Conversion Accessory Kit	ARRACK
4-Drive SAS/SATA Bay	AXX4DRV3G
4-Drive SAS/SATA Bay (Expander)	AXX4DRV3GEXP
6-Drive SAS/SATA Bay	AXX6DRV3G
6-Drive SAS/SATA Bay (Expander)	AXX6DRV3GEXP
4-Drive Fixed Drive Bay	AXX4FIXDB
Intel® Local Control Panel	AXXLCPPED
Cable Management Arm	AXXCMASLITU
330W Power Supply Module	FX0330WPSU
North American Power Cable	FPWR/CABLENA
Slimline USB CD-Floppy Drive	AXXCDUSBDBRK
Preventative Maintenance Kit	ARRP/PMKIT

A complete list of accessories and spares can be found at: www.intel.com/go/serverbuilder



Intel® Server Chassis SC5400Base Components

Notes: * Intel® Server Chassis SC5400BRP not shown.
* Rack mount configurations are shown in the rack mount conversion kit documentation.

1. Fixed Power Supply
2. Rear Serial B Connector
3. PCI Add-in Card Panel
4. Memory Air Duct
5. Processor Air Duct
6. Fixed Fans (2)
7. Hard Disk Drive Cage Release Mechanisms (2)
8. Front Panel Controls
9. 5.25-inch Device Bays (3)
10. Front Panel USB/Serial B
11. Fixed Drive Cage - 4 Drive (accessory)
12. Fixed Drive Cage - 6 Drive

