

Intel® Server System SR1530CLR Quick Start User's Guide

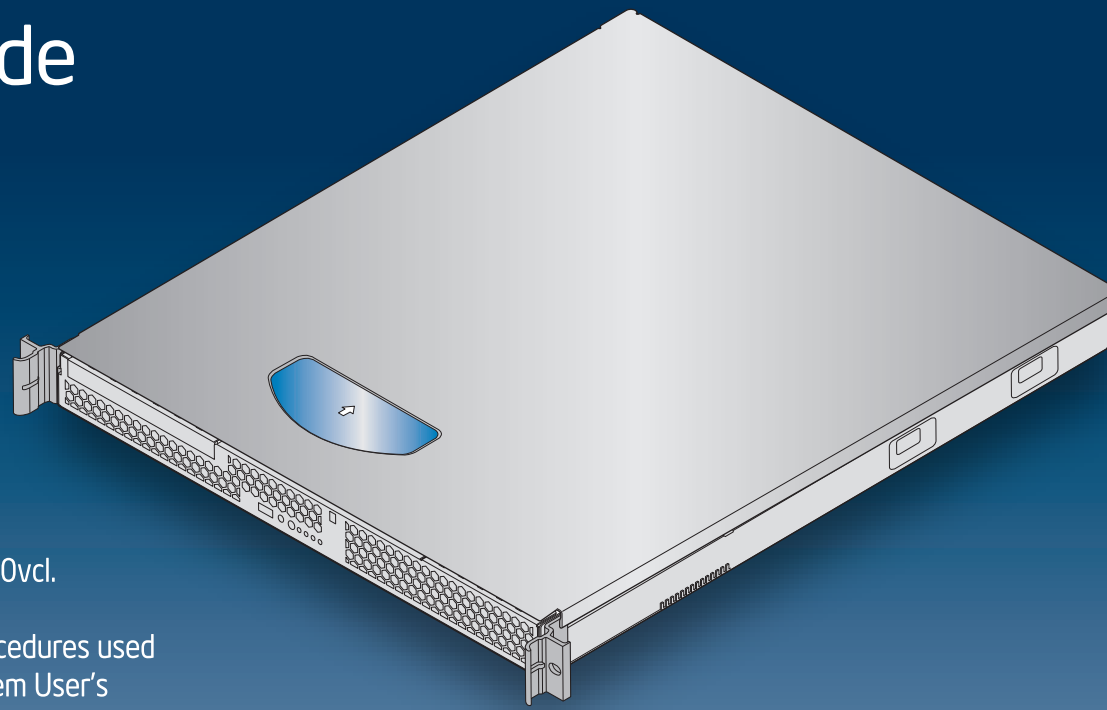
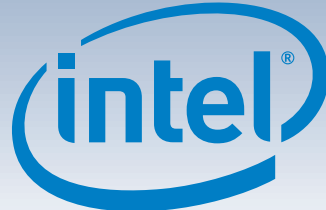
Thank you for buying an Intel® Server System. The following information will help you assemble your Intel® Server System SR1530CLR and install components.

This guide and other supporting documents are located on the web at <http://support.intel.com/support/motherboards/server/s5000vcl>.

If you are not familiar with ESD (Electrostatic Discharge) procedures used during system integration, please see the Intel® Server System User's Guide, available on the Intel® Server Deployment Toolkit 2.0 CD or at <http://support.intel.com/support/motherboards/server/s5000vcl/howto.htm>.

Please boot to the Intel® Server Deployment Toolkit 2.0 CD first for BIOS and firmware configuration and updates.

Read all cautions and warnings first before starting your server system integration.



Minimum Hardware Requirements

To avoid integration difficulties and possible damage to your system, make sure you have components from each category below.

- Processor:**
 - Minimum of one Dual-Core Intel® Xeon® processor 5100 series or one Quad-Core Intel® Xeon® processor 5300 series.
- Heat Sink:**
 - 1U passive heat sink for each processor installed.
- Memory:**
 - Minimum of one 512MB, DDR2 FBDIMM 667 MHz compliant 240-pin DIMM.
- Hard Disk Drives:**
 - SATA
- Power:**
 - Minimum of 400W.

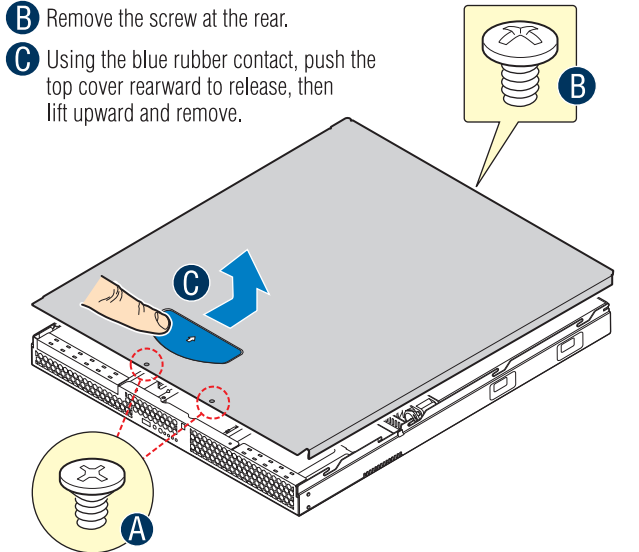
1 Preparing the Chassis

Observe normal ESD (Electrostatic Discharge) procedures.

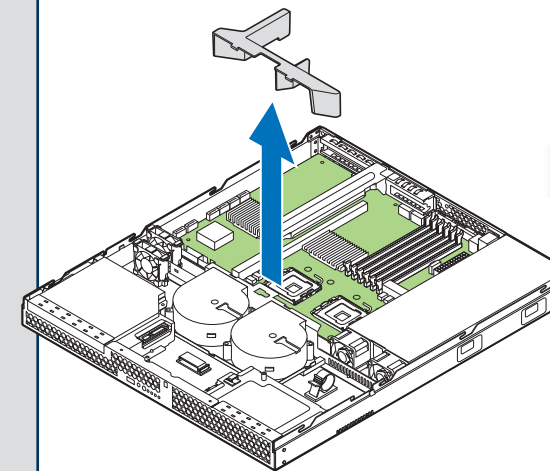
Place your Intel® Server Chassis on a flat anti-static surface to perform the following integration procedures. Always touch the chassis frame first, before reaching inside to make server board connections or to install components.

2 Remove Top Cover

- Remove the two screws at the front.
- Remove the screw at the rear.
- Using the blue rubber contact, push the top cover rearward to release, then lift upward and remove.



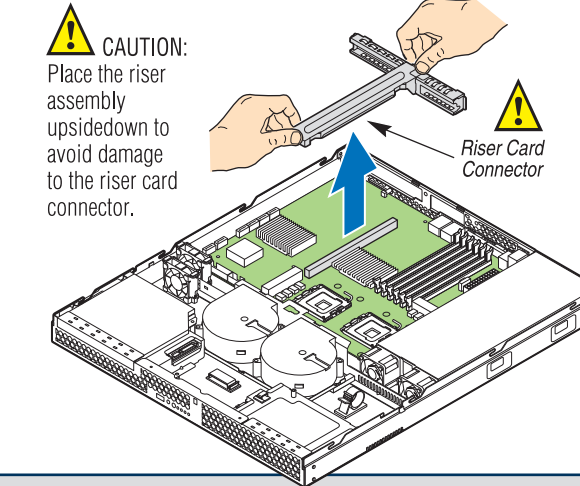
3 Remove Air Baffle



4 Remove Add-in Card Riser Assembly

Grasp riser with both hands and pull straight up to release riser card connector from server board socket.

CAUTION: Place the riser assembly upside-down to avoid damage to the riser card connector.



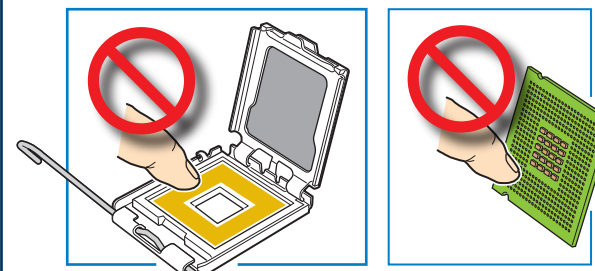
IMPORTANT! Before proceeding further, do the following:

Check your Intel® Server System for disconnected or loose cables and components that may have occurred during shipping.

5 Install the Processor(s)

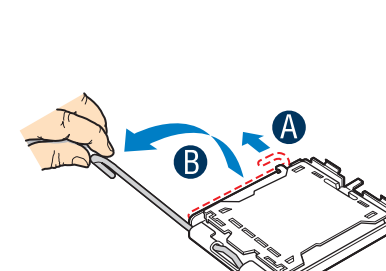
Notes and Cautions:

- When opening a socket, DO NOT TOUCH the gold socket contacts.
- When unpacking a processor, hold by the edges only to avoid touching the gold contacts.



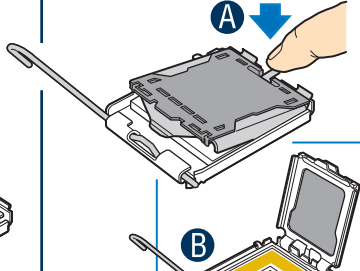
A. Open the Socket Lever

- Push the lever handle down and away from the socket to release it.
- Pull the lever and open all the way.



B. Open the Load Plate

- Push the rear tab with your finger tip to bring the front end of the load plate up slightly.
- Open the load plate as shown.



C. Remove the Processor Protective Cover

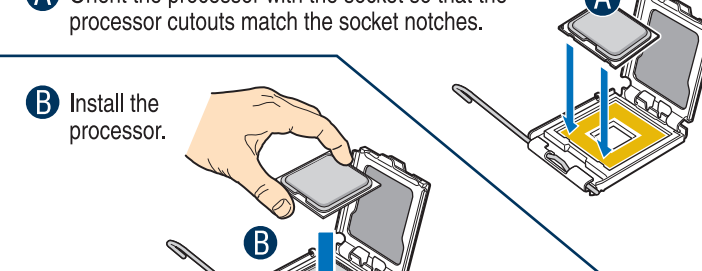
- Take the processor out of the box and remove the protective shipping cover.



D. Install the Processor

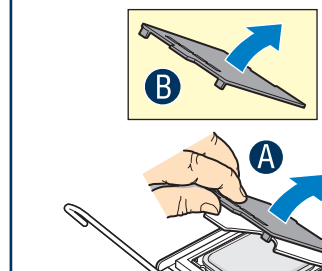
CAUTION: The underside of the processor has components that may damage the socket pins if installed improperly. Processor must align correctly with socket opening before installation. DO NOT DROP processor into socket!

- Orient the processor with the socket so that the processor cutouts match the socket notches.
- Install the processor.



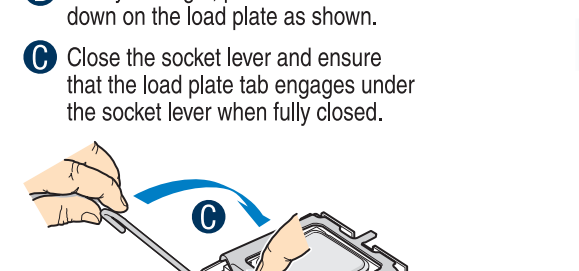
E. Remove Socket Protective Cover

- Grasp the socket protective cover tab and pull away from the load plate as shown.
- Remove the socket protective cover and store for future use.



F. Close Load Plate and Socket Lever

- Close the load plate all the way as shown.
- With your finger, push down on the load plate as shown.
- Close the socket lever and ensure that the load plate tab engages under the socket lever when fully closed.



Warning

Read all caution and safety statements in this document before performing any of the instructions. Also see the Intel® Server Board and Server Chassis Safety Information document at: <http://support.intel.com/support/motherboards/server/sb/cs-010770.htm> for complete safety information.

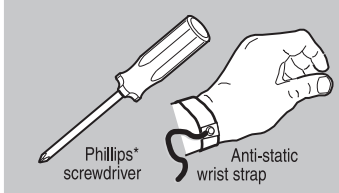
Warning

Installation and service of this product should only be performed by qualified service personnel to avoid risk of injury from electrical shock or energy hazard.

Caution

Observe normal ESD (Electrostatic Discharge) procedures during system integration to avoid possible damage to server board and/or other components.

Tools Required



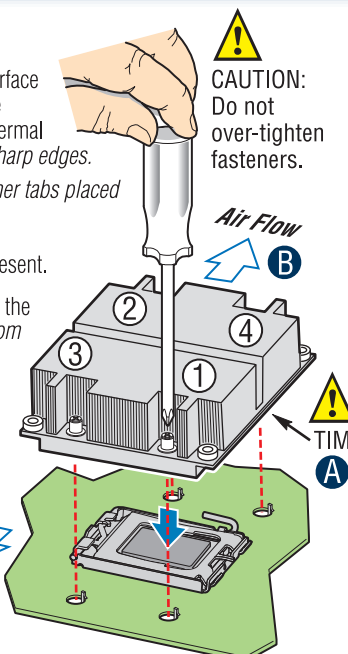
6 Install Heat Sink(s)

CAUTION: The heat sink has thermal interface material (TIM) on the underside of it. Use caution so that you do not damage the thermal interface material. Use gloves to avoid sharp edges.

Note: Ensure heat sink(s) are installed with corner tabs placed away from power supply.

- Remove the protective film on the TIM if present.
- Align heat sink fins to the front and back of the chassis for correct airflow. Airflow goes from front-to-back of chassis.
- Using a #2 Phillips* screwdriver, finger-tighten each fastener diagonally, according to the numbers shown.
- Securely re-tighten each fastener again in the same order as performed in Step C.

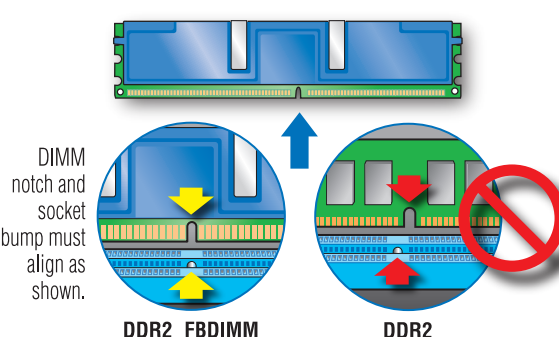
Note: Heat sink styles may vary.



7 Install Memory DIMMs

DDR2 FBDIMM Memory Identification:

- This server board supports up to six DDR2-667 Fully Buffered DIMMs (FBD memory). DDR2 DIMMs that are not FBD memory are not supported on this server board.
- FBDIMM DDR2 memory varies in height. Only low profile DIMMs are supported in this server system.



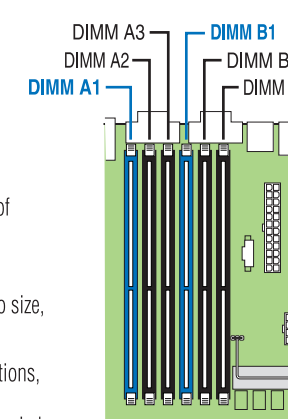
Memory Configurations and Population Order:

Memory Type: Minimum of one 512MB, 667 MHz compliant 240-pin DDR2 FBDIMM.

Populate DDR2 FBDIMMs in the order of A1, B1, A2, B2, and A3 and B3. Populate A1 and B1 (blue) first.

DIMMs must be identical with respect to size, speed, and organization.

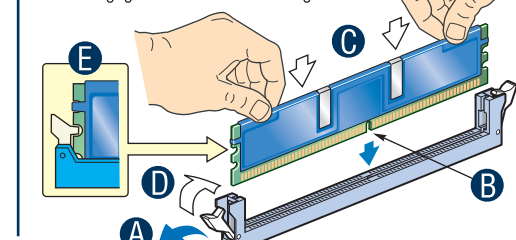
Note: For additional memory configurations, see the User Guide on the Intel® Server Deployment Toolkit 2.0 CD that accompanied your Intel® Server System SR1530CLR, or go to: <http://support.intel.com/support/motherboards/server/s5000vcl>
Memory sizing and configuration is supported only for qualified DIMMs approved by Intel®. For a list of supported memory, see the tested memory list at <http://support.intel.com/support/motherboards/server/s5000vcl/compat.htm>



To Install DIMMs:

CAUTION: Avoid touching contacts when handling or installing DIMMs.

- Open both DIMM socket levers.
- Note location of alignment notch.
- Insert DIMM making sure the connector edge of the DIMM aligns correctly with the slot.
- Push down firmly on the DIMM until it snaps into place and both levers close.
- IMPORTANT!** Visually check that each latch is fully closed and correctly engaged with each DIMM edge slot.



D67972-005

