

Intel® Server System SC5650BCDP Quick Start User's Guide

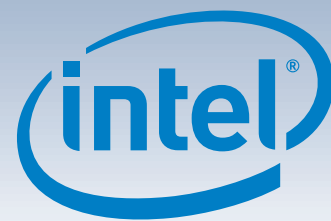
Thank you for buying an Intel® Server System. The following information will help you assemble your Intel® Server System SC5650BCDP and install components.

This guide and other supporting documents are located on the web at: <http://support.intel.com/support/motherboards/server/SC5650BCDP/>

If you are not familiar with ESD (Electrostatic Discharge) procedures used during system integration, please see the Intel® Server System SC5650BCDP User's Guide, available on the Intel® Server Deployment Toolkit CD or at <http://support.intel.com/support/motherboards/server/S5500BC/howto.htm>.

Please boot to the Intel® Server Deployment Toolkit CD first for BIOS and firmware configuration and updates.

Read all cautions and warnings first before starting your server system integration.



Minimum Hardware Requirements

To avoid integration difficulties and possible damage to your system, make sure you have components from each category below.

- Processor:**
 - Minimum of one Intel® Xeon® processor 5500 series (except TDP 135 W)
- Heat Sink:**
 - 2U active heat sink for each processor installed.
- Memory:**
 - Minimum of one 1GB, DDR3 800/1066/1333 MHz compliant 240-pin DIMM.
- Hard Disk Drives:**
 - SATA
- Power:**
 - Minimum of 600W.

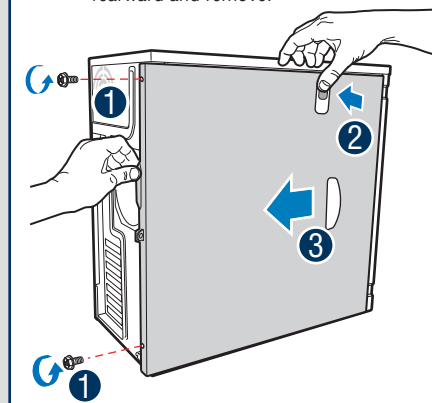
1 Preparing the Chassis

Observe normal ESD (Electrostatic Discharge) procedures.

Place your Intel® Server Chassis on a flat anti-static surface to perform the following integration procedures. Always touch the chassis frame first, before reaching inside to make server board connections or to install components.

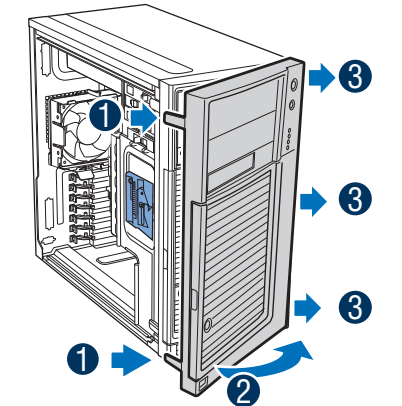
2 Remove Side Cover

- Remove two screws.
- Push in latch.
- Slide side cover rearward and remove.

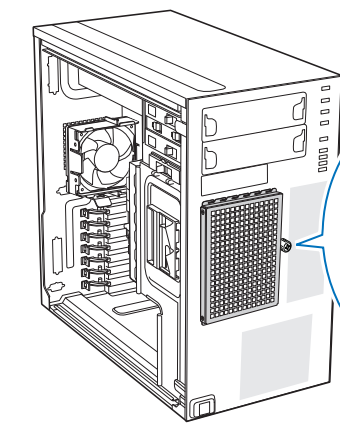


3 Remove Front Bezel Assembly

- Lift outward two bezel tabs on left side of bezel assembly to detach bezel assembly from the chassis.
- Rotate left side of front bezel assembly outward slightly.
- Disengage three bezel clips that attach the right side of the bezel to the right side of the chassis and remove.

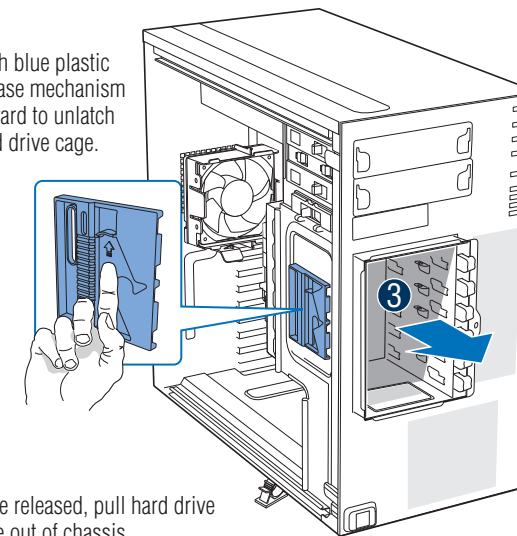


4 Remove Tool-less Hard Drive Cage



- Loosen thumb screw. Apply pressure to right side of EMI shield to release EMI shield from hard drive cage.

- Push blue plastic release mechanism upward to unlatch hard drive cage.



- Once released, pull hard drive cage out of chassis.

IMPORTANT! Before proceeding further, do the following:

Check your Intel® Server System for disconnected or loose cables and components that may have occurred during shipping.

Warning

Read all caution and safety statements in this document before performing any of the instructions. Also see the Intel® Server Board and Server Chassis Safety Information document at: <http://support.intel.com/support/motherboards/server/sb/cs-010770.htm> for complete safety information.

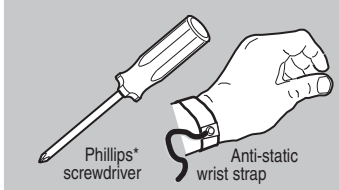
Warning

Installation and service of this product should only be performed by qualified service personnel to avoid risk of injury from electrical shock or energy hazard.

Caution

Observe normal ESD (Electrostatic Discharge) procedures during system integration to avoid possible damage to server board and/or other components.

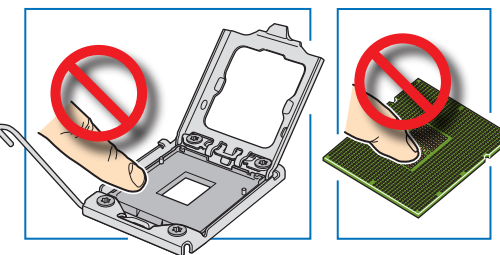
Tools Required



5 Install the Processor(s)

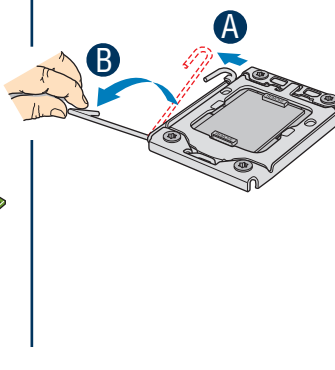
Cautions:

- When opening a socket, DO NOT TOUCH the gold socket wires.
- When unpacking a processor, hold by the edges only to avoid touching the gold contact wires.



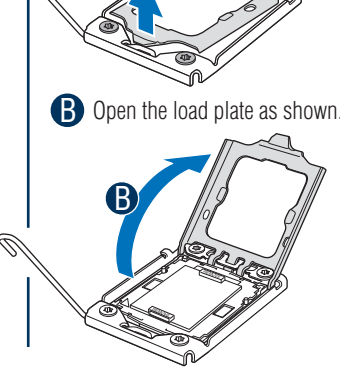
A. Open the Socket Lever

- Push the lever handle down and away from the socket to release it.
- Rotate the lever open all the way.



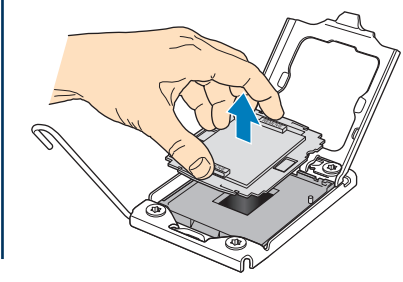
B. Open the Load Plate

- Push the rear tab with your finger tip to bring the front end of the load plate up slightly.
- Open the load plate as shown.



C. Remove Socket Protective Cover

- Grasp the socket protective cover by the two tabs and carefully lift straight up as shown.
- To avoid damage, DO NOT DROP the cover onto the socket wires or components.



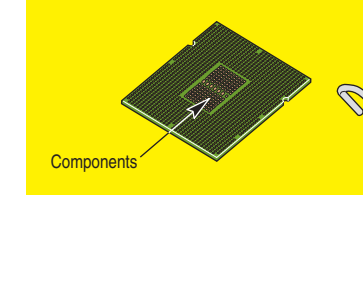
D. Remove the Processor Protective Cover

- Take the processor out of the box and remove the protective shipping cover.

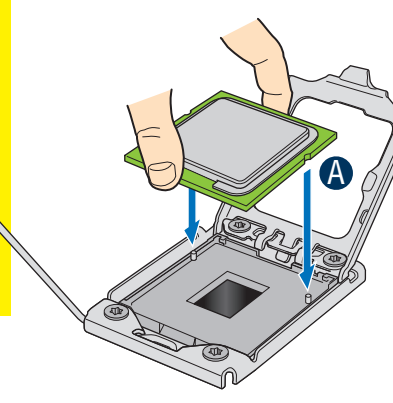


E. Install the Processor

- CAUTION:** The underside of the processor has components that may damage the socket wires if installed improperly.
- Processor must align correctly with the socket opening before installation. DO NOT DROP processor into socket!

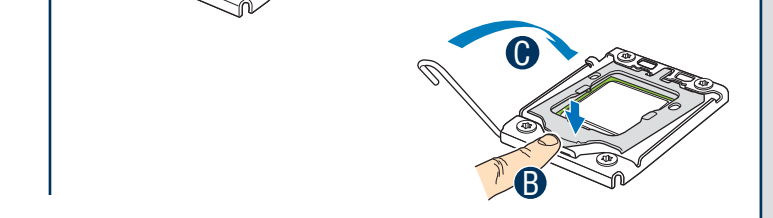


- Orient the processor with the socket so that the processor cutouts match the two socket pins. Install the processor as shown.



F. Close Load Plate and Socket Lever

- Close the load plate all the way as shown.
- With your finger, push down on the load plate as shown.
- Close the socket lever and ensure that the load plate tab engages under the socket lever when fully closed.



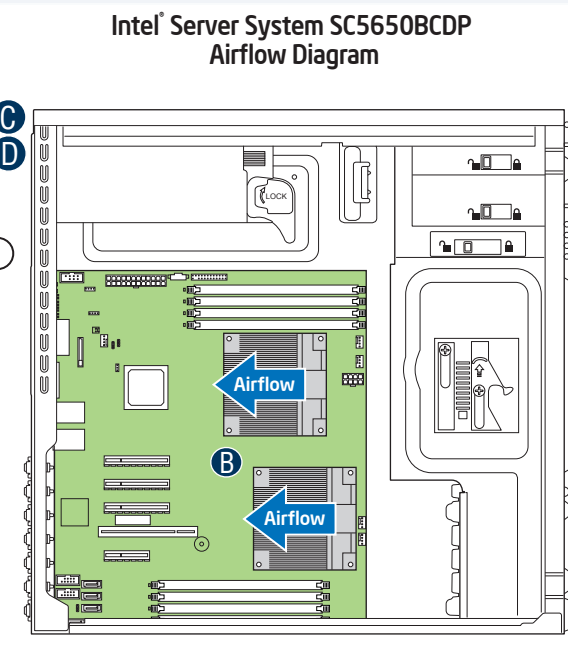
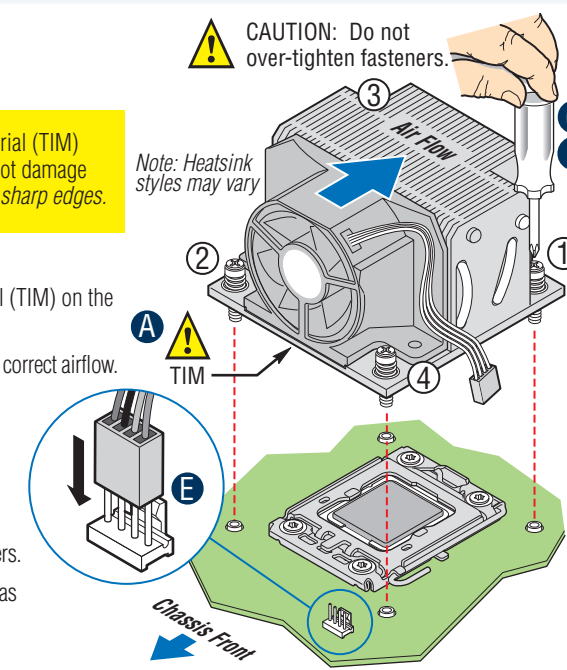
6 Install Active Heat Sink(s)

A typical active heat sink is shown below.

- CAUTION:** The heat sink has thermal interface material (TIM) on the underside of it. Use caution so that you do not damage the thermal interface material. Use gloves to avoid sharp edges.

- If a protective film covers the thermal interface material (TIM) on the underside of the heatsink, remove the protective film.
- Align heatsink fins to the front and back of the chassis for correct airflow. Airflow goes from front-to-back of chassis. See airflow diagram at right.

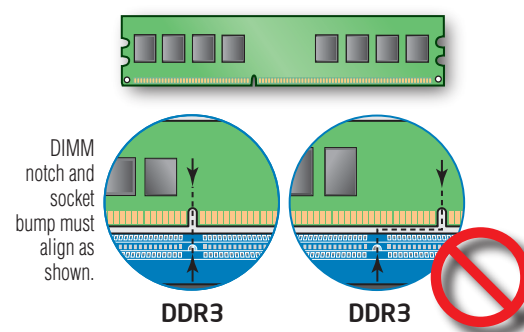
- Using a #2 Phillips® screwdriver, finger-tighten each fastener diagonally, according to the white-circled numbers.
- Securely re-tighten each fastener again in the same order as performed in Step C.
- Attach fan power cable to server board as shown.



7 Install Memory DIMMs

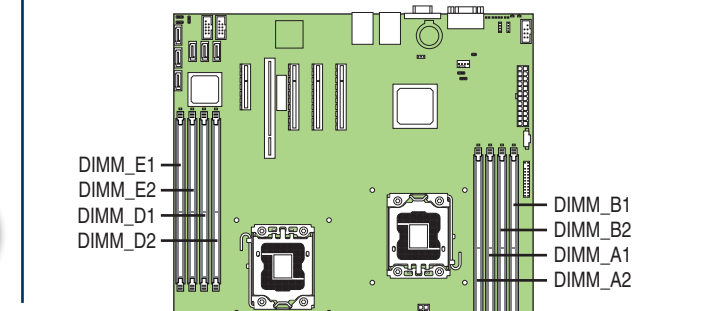
DDR3 Memory Identification:

- CAUTION:** This server board supports up to eight DDR3-800/1066/1333 ECC RDIMM and ECC UDIMMs.



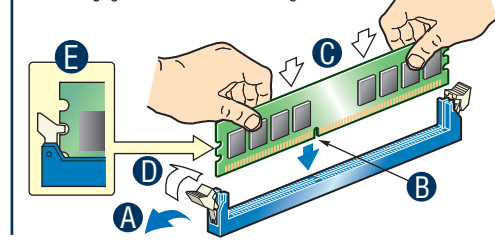
Memory Configurations and Population Order:

Memory Type: Minimum of one 1GB 800/1066/1333 MHz compliant 240-pin DDR3 DIMM. Populate the farthest DIMM from the processor for per DIMM per channel. DIMMs must be identical with respect to size, speed, and organization. Note: For additional memory configurations, see the User Guide on the Intel® Server Deployment Toolkit CD that accompanied your Intel® Server System SC5650BCDP, or go to: <http://support.intel.com/support/motherboards/server/SC5650BCDP>. Memory sizing and configuration is supported only for qualified DIMMs approved by Intel®. For a list of supported memory, see the tested memory list at <http://support.intel.com/support/motherboards/server/SC5650BCDP/compat.htm>



To Install DIMMs:

- CAUTION:** Avoid touching contacts when handling or installing DIMMs.
- Open both DIMM socket levers.
 - Note location of alignment notch.
 - Insert DIMM making sure the connector edge of the DIMM aligns correctly with the slot.
 - Push down firmly on the DIMM until it snaps into place and both levers close.
 - IMPORTANT!** Visually check that each latch is fully closed and correctly engaged with each DIMM edge slot.



E79709-001

