



Monthly Specification Update

Intel® Workstation Board S5520SC

Intel Order Number E68106-016



December, 2010

Enterprise Platforms and Services Division

Revision History

Date	Modifications
04/06/2009	Initial release
05/12/2009	Fixed erratum 3, and erratum 6
06/30/2009	Fixed erratum 12, erratum 13, and erratum 15. Added erratum 20.
07/14/2009	Updated product scope table; added erratum 21.
09/21/2009	Fixed erratum 10, erratum 17; Added erratum 22, and erratum 23.
12/11/2009	Added erratum 24 and erratum 25
01/18/2010	Added erratum 26; updated product scope
03/28/2010	Added Intel [®] Xeon [®] Processor 5600 series information; Added erratum 27; Updated product scope
04/22/2010	Added erratum 28 and erratum 29.
05/18/2010	Added erratum 30.
06/12/2010	Added erratum 31, updated erratum 25 and 29.
7/14/2010	No update
8/17/2010	No update
9/16/2010	Added erratum 32
10/28/2010	Added erratum 33
11/15/2010	No update
12/15/2010	Updated erratum 24, added erratum 34 and 35

Disclaimers

The S5520/S5500 Server System may contain design defects or errors known as errata that may cause the product to deviate from the published specifications. Current characterized errata are documented in this Specification Update.

Information in this document is provided in connection with Intel products. No license, express or implied, by Intel or otherwise, to any intellectual property rights is granted by this document. Except as provided in Intel's Terms and Conditions of Sale for such products, Intel assumes no liability whatsoever, and Intel disclaims any express or implied warranty, relating to sale and/or use of Intel products including liability or warranties relating to fitness for a particular purpose, merchantability, or infringement of any patent, copyright or other intellectual property right. Intel products are not intended for use in medical, life saving, or life sustaining applications. Intel may make changes to specifications and product descriptions at any time, without notice.

Contact your local Intel sales office or your distributor to obtain the latest specifications and before placing your product order.

Intel, Itanium, Pentium, and Xeon are trademarks or registered trademarks of Intel Corporation.

*Other brands and names may be claimed as the property of others.

Copyright © Intel Corporation 2010.

Contents

Preface 1

Summary Tables of Changes 3

Errata 5

- 1. Enabling AHCI mode in BIOS setup will cause Microsoft Windows 2008* to hang during installation 5
- 2. System will hang resuming from the ACPI S3 sleep state 5
- 3. System will hang entering the ACPI S1 sleep state..... 5
- 4. USB devices limited to a total of twelve..... 5
- 5. Excessive Temperature does not trigger a Thermal Trip event..... 6
- 6. Hyper Threading cannot be disabled in BIOS setup 6
- 7. A critical interrupt is logged in the System Event Log (SEL) when installing SuSE* SLES 10 SP2 32 bit..... 6
- 8. Errors are reported during the installation of SuSE* SLES 10 SP2 EM64T 7
- 9. In SATA compatibility mode the operating system may take more than four hours to install 7
- 10. Serial Console mode may display extra text or intermingled text..... 7
- 11. The PXE boot option is missing in BIOS Setup..... 8
- 12. Fans may boost temporarily when BMC is under load 8
- 13. Extra events may be seen in the SEL during system reset..... 8
- 14. BIOS setup may report incorrect firmware versions 9
- 15. Onboard SATA controller SW RAID mode is not available when Intel® SAS Entry RAID Module AX4SASMOD is set to Intel® ESRTII mode 9
- 16. When battery is missing, firmware will think it is there 9
- 17. SES connection is not enabled in Intel® SAS Entry RAID Module AX4SASMOD firmware v2009.03.24..... 9
- 18. Closed Loop Thermal Throttling (CLTT) is not automatically detected and set when using unbuffered memory (UDIMM)..... 10
- 19. SASflash for EFI may not run when EFI Optimized Boot BIOS option is enabled 10
- 20. Excessive Time to Enter or Exit EFI Shell When AHCI is Enabled in BIOS Revision R0037 10
- 21. Serial Over LAN (SOL) Will not Automatically Enable Console Redirection When Console Redirection Is Disabled In BIOS Setup 11
- 22. Windows* Server 2003 may hang when log in to Intel® Raid Web Console2 version 3.04-05 with Intel® Embedded Server RAID Technology II (ESRTII) Raid enabled 11
- 23. Cannot boot from SATA CD/DVD ROM using a “bootable” Microsoft DOS* CD/DVD when RAID (or AHCI) is Enabled in the BIOS setup..... 11
- 24. High CPU utilization may occur when installing or running Microsoft Windows Server 2008 R2* or Microsoft Windows 7* with default NIC driver..... 12

25.	Clearing BIOS CMOS in BIOS Revision R0042 may return an invalid Date	12
26.	SuSE* SLES11 kernel may halt for 60 seconds during installation with default BIOS setting	13
27.	Intel® Active System Console (IASC) 3.5.1 and 3.5.2 may fail to detect status of memory voltage sensors	13
28.	Wrong Fan Fault LED may glow if "other chassis" is selected when flashing FRUSDR2114	
29.	Processor 01 Fan sensor may not display as expected in FRUSDR25.....	15
30.	NIC driver 15.1.1 may not be installed properly in Microsoft Windows Vista* or Microsoft Windows 7*	15
31.	Inaccurate HSC FW revision displayed in BIOS setup	18
32.	System may go to EFI first instead of Hardware RAID configuration setup page....	18
33.	Lower network performance may be observed when Hyper-V role is added in Windows Server 2008 R2 with more than 32G memory.....	18
34.	System with BIOS Revision R0054 may hang when Adaptec* 5405 or 5805 RAID card installed.....	19
35.	System may not enter LSI* 9260-4i/8i RAID card webBIOS when both LSI*9260-4i/8i RAID card and LSI* 20320-R SCSI card installed	19
Documentation Changes		20

This page intentionally left blank

Preface

This document is an update to the specifications contained in the *Monthly Specification Update Technical Product Specification* (Order Number E39528). It is intended for hardware system manufacturers and software developers of applications, operating systems, or tools. It will contain specification changes, specification clarifications, errata, and document changes.

Refer to the *Intel® Xeon® Processor 5500 Series Specification Update* (Order Number 321324) and the *Intel® Xeon® Processor 5600 Series Specification Update* for specification updates concerning the Intel® Xeon® Processor 5500 Series and Intel® Xeon® Processor 5600 Series. Items contained in the *Intel® Xeon® Processor 5500 Series Specification Update* and *Intel® Xeon® Processor 5600 Series Specification Update* that either do not apply to the Monthly Specification Update or have been worked around are noted in this document. Otherwise, it should be assumed that any processor errata for a given stepping are applicable to the Printed Board Assembly (PBA) revisions(s) associated with that stepping.

Refer to the *Intel® 5520 and Intel® 5500 Chipsets I/O Hub (IOH) Specification Update* (Order Number 313069) for specification updates concerning the *Intel® 5520 and Intel® 5500 Chipsets I/O Hub (IOH)*. Items contained in the *Intel® 5520 and Intel® 5500 Chipsets I/O Hub (IOH) Specification Update* that either do not apply to the Monthly Specification Update or have been worked around are noted in this document. Otherwise, it should be assumed that any chipset errata for a given stepping are applicable to the Printed Board Assembly (PBA) revisions(s) associated with that stepping.

Refer to the *Intel® I/O Controller Hub 10 (ICH10) Family Specification Update* (Order Number 319974) for specification updates concerning the *Intel® I/O Controller Hub 10 (ICH10) Family*. Items contained in the *Intel® I/O Controller Hub 10 (ICH10) Family Specification Update* that either do not apply to the Monthly Specification Update or have been worked around are noted in this document. Otherwise, it should be assumed that any chipset errata for a given stepping are applicable to the Printed Board Assembly (PBA) revisions(s) associated with that stepping.

Nomenclature

- **Specification Changes** are modifications to the current published specifications for Intel® server boards. These changes will be incorporated in the next release of the specifications.
- **Specification Clarifications** describe a specification in greater detail or further highlight a specification's impact to a complex design situation. These clarifications will be incorporated in the next release of the specifications.
- **Documentation Changes** include typos, errors, or omissions from the current published specifications. These changes will be incorporated in the next release of the specifications.
- **Errata** are design defects or errors. Errata may cause the server board behavior to deviate from published specifications. Hardware and software designed to be used with any given processor stepping must assume that all errata documented for that processor stepping are present on all devices.

Product Scope

Below are the specific boards, BIOS and components covered by this update.

Product Code	Baseboard PBA Revision	BIOS Revision	BMC Revision	FRU / SDR Revision	ME Revision	EEPROM Revision	Change Description (PCN#)
S5520SC	E30682-303	R0025.1	00.28	11	1.05	1.3	Product Launch
S5520SC	E30682-304	R0038	00.40	19	1.11	1.3	PCN109471-00
S5520SCR	E30682-353	R0045	00.45	21	1.11	1.4	Product Launch
S5520SCR	E30682-354	R0048	00.49	25	1.12	1.4	PCN109867-00

Summary Tables of Changes

The following tables indicate the errata and the document changes that apply to the Monthly Specification Update. Intel intends to fix some of the errata in a future stepping of components, and to account for the other outstanding issues through documentation or specification changes as noted. The tables use the following notations:

Doc: Intel intends to update the appropriate documentation in a future revision.

Fix: Intel intends to fix this erratum in a future release of the component.

Fixed: This erratum has been previously fixed.

No Fix: There are no plans to fix this erratum.

Shaded: This erratum is either new or has been modified from the previous specification update.

Table 1. Errata Summary

No.	Plans	Description of Errata
1.	Fixed	Enabling AHCI mode in BIOS setup will cause Microsoft Windows 2008* to hang during installation
2.	Fixed	System will hang resuming from the ACPI S3 sleep state
3.	Fixed	System will hang entering the ACPI S1 sleep state
4.	Fixed	USB devices limited to a total of twelve
5.	Fixed	Excessive Temperature does not trigger a Thermal Trip event
6.	Fixed	Hyper Threading cannot be disabled in BIOS setup
7.	No Fix	A critical interrupt is logged in the System Event Log (SEL) when installing SuSE* SLES 10 SP2 32 bit
8.	Fix	Errors are reported during the installation of SuSE* SLES 10 SP2 EM64T
9.	Fixed	In SATA compatibility mode the operating system may take more than four hours to install
10.	Fixed	Serial Console mode may display extra text or intermingled text
11.	Fix	The PXE boot option is missing in BIOS Setup
12.	Fixed	Fans may boost temporarily when BMC is under load
13.	Fixed	Extra events may be seen in the SEL during system reset
14.	Fix	BIOS setup may report incorrect firmware versions
15.	Fixed	Onboard SATA controller SW RAID mode is not available when Intel® SAS Entry RAID Module AXX4SASMOD is set to Intel® ESRTII Mode
16.	No Fix	When battery is missing, firmware will think it is there
17.	Fixed	SES connection is not enabled in Intel® SAS Entry RAID Module AXX4SASMOD firmware v2009.03.24
18.	Fix	Closed Loop Thermal Throttling (CLTT) is not automatically detected and set when using unbuffered memory (UDIMM)
19.	No Fix	SASflash for EFI may not run when EFI Optimized Boot BIOS option is enabled
20.	Fixed	Excessive Time to Enter or Exit EFI Shell When AHCI is Enabled in BIOS Revision R0037

No.	Plans	Description of Errata
21.	Fix	Serial Over LAN (SOL) Will not Automatically Enable Console Redirection When Console Redirection Is Disabled In BIOS Setup
22.	Fix	Windows* Server 2003 may hang when log in to Intel® Raid Web Console2 version 3.04-05 with Intel® Embedded Server RAID Technology II (ESRTII) Raid enabled
23.	No Fix	Cannot boot from SATA CD/DVD ROM using a “bootable” Microsoft DOS* CD/DVD when RAID (or AHCI) is Enabled in the BIOS setup
24.	Fixed	High CPU utilization may occur when installing or running Microsoft Windows Server 2008 R2* or Microsoft Windows 7* with default NIC driver
25.	Fixed	Clearing BIOS CMOS in BIOS Revision R0042 May Return an Invalid Date
26.	No Fix	SLES11 kernel may halt for 60 seconds during installation with default BIOS setting
27.	Fix	Intel® Active System Console (IASC) 3.5.1 and 3.5.2 may fail to detect status of low voltage memory sensors
28.	Fixed	Wrong FAN Fault LED may glow if “other chassis” is selected when updating FRUSDR21.
29.	Fixed	Processor fan 01 sensor may not display as expected in FRUSDR25.
30.	Fix	NIC driver 15.1.1 may not be installed properly in Microsoft Windows Vista* or Microsoft Windows 7*.
31.	Fix	Inaccurate HSC FW revision displayed in BIOS setup
32.	Fix	System may go to EFI first instead of Hardware Raid configuration setup page
33.	Fix	Lower than expected network performance may be observed when Hyper-V role is added in Windows*2008 R2
34.	Fix	System with BIOS Revision R0054 may hang when Adaptec* 5405 or 5805 RAID card installed.
35.	Fix	System may not enter LSI* 9260-4i/8i RAID card webBIOS when both LSI*9260-4i/8i RAID card and LSI* 20320-R SCSI card installed

Table 2. Documentation Changes

No.	Plans	Description of Documentation Change
1.	None	None

Following are in-depth descriptions of each erratum / documentation change indicated in the tables above. The errata and documentation change numbers below correspond to the numbers in the tables.

Errata

1. Enabling AHCI mode in BIOS setup will cause Microsoft Windows 2008* to hang during installation

Problem	AHCI mode enabled causes Microsoft Windows 2008* to hang during operating system installation.
Implication	Users that desire to utilize the AHCI feature in BIOS setup will encounter a system hang during the installation of the Microsoft Windows 2008* operating system.
Status	This issue was resolved in BIOS release R0027.
Workaround	Disable AHCI in BIOS setup.

2. System will hang resuming from the ACPI S3 sleep state

Problem	Resuming from an S3 sleep state with Microsoft Windows 2003* or Microsoft Windows XP* and two installed processors will result in a system hang condition.
Implication	The use of 2 processors and Microsoft Windows 2003* or Microsoft Windows XP* will hang resuming from an S3 sleep state.
Status	This issue was resolved in BIOS release R0030.
Workaround	None.

3. System will hang entering the ACPI S1 sleep state

Problem	Entering an S1 sleep state with Microsoft Windows 2003 R2* will result in a system hang condition.
Implication	Users of Microsoft Windows 2003 R2* will encounter a system hang entering an S1 sleep state.
Status	This issue was fixed with BIOS Release R0035 with NIC driver package v14.0.
Workaround	None.

4. USB devices limited to a total of twelve

Problem	Populating more than twelve USB devices may cause the system to hang during POST.
---------	---

Implication	Users needing more than twelve USB devices on the system may experience system hangs during POST.
Status	This issue was resolved in BIOS revision R0030.
Workaround	None.

5. Excessive Temperature does not trigger a Thermal Trip event

Problem	If the I/O Hub (IOH) of the Tylersburg chipset is heated beyond thermal limits, a thermal trip event is not generated.
Implication	Excessive heat on the IOH for extensive lengths of time may damage or lower the expected life of the integrated Circuit (IC).
Status	This issue was resolved in BIOS revision R0029 and BMC revision 31.
Workaround	None.

6. Hyper Threading cannot be disabled in BIOS setup

Problem	In the BIOS Setup Menu: \Advanced\Processor, setting the Hyper Threading option to disabled will initially indicate the option is disabled. However, when the user re-enters BIOS Setup, the option will be enabled.
Implication	Users that desire to disable Hyper Threading will not be able to do so.
Status	This issue was fixed in BIOS Release R0034.
Workaround	None.

7. A critical interrupt is logged in the System Event Log (SEL) when installing SuSE* SLES 10 SP2 32 bit

Problem	A critical interrupt, PCIe Fat Sensor –[severity] event: Critical Interrupt, is logged during the installation of SuSE* SLES 10 SP2 32 bit.
Implication	The user will see a PCIe critical event logged. There is no functional impact.
Status	No Fix.
Workaround	Add “noisapnp” to the command line option to prevent scanning of a ISA plug and play devices.

8. Errors are reported during the installation of SuSE* SLES 10 SP2 EM64T

Problem	When installing SuSE* SLES 10 SP2 EM64T with Advanced Error Reporting (AER) capabilities enabled, an AER error is logged in the operating system event log.
Implication	AER uses an optional ACPI requirement, -OCS, that is not available in the S5500 BIOS revisions. There is no functional impact.
Status	This issue may be fixed in a future BIOS revision.
Workaround	None.

9. In SATA compatibility mode the operating system may take more than four hours to install

Problem	When the BIOS setup option: \Advanced\Mass Storage Controller Configuration\Configure SATA Mode is set to <i>Compatibility</i> mode, Red Hat* RHEL 5 UP2 may take in excess of four hours to install.
Implication	Users may experience an extended installation time when SATA Mode is configured as <i>Compatibility</i> mode and installing Red Hat* RHEL 5 UP2.
Status	This issue was fixed in BIOS 33 and BMC 34.
Workaround	None.

10. Serial Console mode may display extra text or intermingled text

Problem	When operating in serial console mode, during POST the user may notice 1 of 2 conditions. 1. The user may see the numeral 10 displayed at the top right corner of the screen or 2. The RAID controller information may be intermingled with the platform information displayed by BIOS.
Implication	There is no functional impact associated with this erratum.
Status	This may be fixed in a future BIOS revision.
Workaround	None.

11. The PXE boot option is missing in BIOS Setup

Problem	If a user disables the primary (onboard) video in BIOS Setup and enable console redirection, the PXE boot option will disappear from the BIOS Boot Manager.
Implication	Users that desire to utilize the PXE boot option must leave the primary (onboard) video enabled.
Status	This issue may be fixed in a future BIOS revision.
Workaround	None.

12. Fans may boost temporarily when BMC is under load

Problem	The system fans may boost when the BMC is operating under a heavy load. This can include large sequential BMC tasks such as viewing the system event log, configuring the BMC or resetting the system. The fans return to normal automatically after the BMC operations complete
Implication	The systems fans will run at a higher state temporarily, increasing acoustics.
Status	This issue was fixed with BMC 00.36.
Workaround	None.

13. Extra events may be seen in the SEL during system reset

Problem	<p>The BMC may log periodic, spurious SEL events during a system reset. These events may appear as fan errors or double appearances of normal events. The spurious fan readings will only happen during reset and are not an indication of an actual fan failure. Fan failure events that occur during a reboot should be ignored.</p> <p>To identify when a reboot happened, locate the following events, which are normally logged after system rest or AC power cycle:</p> <p><i>System Event/BIOS Evt Sensor (# 0x83) Timestamp Clock Sync. 1st of pair. Asserted Event.</i></p> <p><i>System Event/BIOS Evt Sensor (# 0x83) Timestamp Clock Sync. 2nd of pair. Asserted Event.</i></p>
Implication	The SEL log may indicate fan errors or double instances of normal events intermittently.
Status	This issue was fixed with BMC 00.36.
Workaround	None

14. BIOS setup may report incorrect firmware versions

Problem	The BIOS setup screens to display the versions of SDR and ME firmware version may report an incorrect version. The version displayed may be of the previously installed versions.
Implication	After firmware update, the BIOS screens may not show the correct version until the system is AC cycled.
Status	This issue may be fixed in a future BMC release.
Workaround	None.

15. Onboard SATA controller SW RAID mode is not available when Intel® SAS Entry RAID Module AXX4SASMOD is set to Intel® ESRTII mode

Problem	The <i>SW RAID</i> mode for BIOS setup option: <i>Configure SATA Mode</i> is not available, when the Intel® SAS Entry RAID Module AXX4SASMOD is installed and set to <i>Intel® ESRTII</i> mode.
Implication	Users that desire to use both onboard SATA controller and Intel® SAS Entry RAID Module AXX4SASMOD module in Intel® ESRTII mode simultaneously will not be able to do so.
Status	This issue was resolved with BIOS R0037.
Workaround	None.

16. When battery is missing, firmware will think it is there

Problem	If the workstation board battery is missing, firmware will think it is there and good.
Implication	There is no function impact associated with this erratum. Firmware will however monitor the battery health if it is present
Status	No Fix.
Workaround	None.

17. SES connection is not enabled in Intel® SAS Entry RAID Module AXX4SASMOD firmware v2009.03.24

Problem	The SES connector is available on the Intel® SAS Entry RAID Module AXX4SASMOD, but the SES connection is not enabled in AXX4SASMOD firmware v2000.03.24.
---------	--

Implication	Users that desire to use SES connection on Intel® SAS Entry RAID Module AXX4SASMOD for Intel® non-expander backplanes AXX4DRV3GR and AXX6DRV3GR fault LED control will not be able to do it.
Status	This issue may be fixed in a future Intel® SAS Entry RAID Module AXX4SASMOD firmware revision.
Workaround	None.

18. Closed Loop Thermal Throttling (CLTT) is not automatically detected and set when using unbuffered memory (UDIMM)

Problem	When using UDIMMs, CLTT will not be automatically selected if using the “Auto” feature on the System Accoustics and Performance page of BIOS setup.
Implication	If users elect to utilize UDIMMs in their system, they must manually enable CLTT in BIOS setup. Note: Users must ensure that the Serial Presence Detect (SPD) on <i>ALL</i> installed DIMMs support CLTT. If the user is unsure if <i>ALL</i> DIMMs installed support CLTT, the user should maintain the system in Open Loop Thermal Throttling (OLTT) mode.
Status	This issue may be fixed in a future BIOS revision.
Workaround	None.

19. SASflash for EFI may not run when EFI Optimized Boot BIOS option is enabled

Problem	SASflash.efi may not run when BIOS option: <i>EFI Optimized Boot</i> is enabled and RAID controller is in IT/IR or Intel® ESRTII RAID mode.
Implication	Users need to disable <i>EFI optimized Boot</i> BIOS option when update firmare by SASflash.efi on RAID controller that in IT/IR or Intel® ESRTII RAID mode.
Status	No Fix
Workaround	None.

20. Excessive Time to Enter or Exit EFI Shell When AHCI is Enabled in BIOS Revision R0037

Problem	If AHCI is enabled in BIOS setup, it will take the user approximately 3 or more minutes to enter the EFI shell from BIOS Setup and approximatley 3 or more minutes to exit the EFI shell.
---------	---

Implication	Users should expect long delays when entering the EFI shell from BIOS setup if AHCI is also enabled.
Status	This issue was fixed with BIOS R0038.
Workaround	None.

21. Serial Over LAN (SOL) Will not Automatically Enable Console Redirection When Console Redirection Is Disabled In BIOS Setup

Problem	If console redirection is disabled in BIOS setup SOL will no longer automatically detect this condition and then enable console redirection.
Implication	Console redirection must be enabled in BIOS setup prior to utilizing SOL. Furthermore, the IPMI command <i>SetSystemBootOption</i> to enable console redirection is not supported.
Status	This issue may be fixed in a future BIOS revision or with the optional IPMI command support.
Workaround	None.

22. Windows* Server 2003 may hang when log in to Intel* Raid Web Console2 version 3.04-05 with Intel* Embedded Server RAID Technology II (ESRTII) Raid enabled

Problem	When using windows* server 2003 with onboard ESRTII raid enabled, user may experience system hang when trying to log in to Intel® Raid Web Console2, BSOD(Blue Screen of Death) with either of the following messages may occur: - BAD_POOL_HEADER Error code: STOP 0x00000019 - IRQL_NOT_LESS_OR_EQUAL Error code: STOP 0x000000D1
Implication	This issue is caused by a minor bug in Intel® Raid Web Console2 software code.
Status	This erratum may be fixed in a future Intel® Embedded Server RAID Technology II (ESRTII) driver.
Workaround	Use Intel® Raid Web Console2 version v2.92-01.

23. Cannot boot from SATA CD/DVD ROM using a “bootable” Microsoft DOS* CD/DVD when RAID (or AHCI) is Enabled in the BIOS setup

Problem	Users cannot boot Intel® Workstation Board S5520SC from SATA CD/DVD ROM using a “bootable” Microsoft Disk Operating System* (MS-DOS).based CD/DVD when the RAID (or AHCI) is enabled in the BIOS Setup.
---------	---

Implication	Users needing to boot to any MS-DOS based diagnostic, pre-install, or application CDs (for example, Bart's PE), are limited to using only the "Enhanced" or "Compatibility" mode setting in BIOS. Please note: Operating system installation CDs are not affected by this issue since they typically use "iso-linux".
Status	This is a known limitation. Whenever the RAID (or AHCI) setting is selected, the Advanced Host Controller Interface Option ROM is loaded. Unfortunately, AHCI is not supported by the MS-DOS.
Workaround	None.

24. High CPU utilization may occur when installing or running Microsoft Windows Server 2008 R2* or Microsoft Windows 7* with default NIC driver

Problem	There has been high CPU load observed when installing or running Microsoft Windows Server 2008 R2* or Microsoft Windows 7* with default NIC (Network Interface Card) driver.
Implication	When the ports are not electrically "linked" and the embedded driver is loaded the DPC rate steadily increases until the system slows to the point where it is essentially unusable.
Status	This issue was fixed in BIOS R0054. Before Operation System installation, Change the BIOS setting Pcie AER support under Advanced -> PCI configuration from "Enable" to "Disable".
Workaround	Make sure the ports are connected to a network, switch or simply back-to-back. This need to be done at least prior to the driver loading because once the port is malfunctioning, it cannot be recovered by connecting the ports. Updating to the latest posted driver resolves the problem. The latest NIC driver 14.6 can be obtained at below webpage. http://downloadcenter.intel.com/Detail_Desc.aspx?agr=Y&DwnldID=18235&Prodlid=3069&lang=eng

25. Clearing BIOS CMOS in BIOS Revision R0042 may return an invalid Date

Problem	If the user clears the BIOS CMOS settings via jumper or using the Sysconfig /bldfs switch, the date in BIOS setup may be corrupted and read 09XX.
Implication	An invalid date stamp, 09XX, may be displayed in BIOS setup after clearing BIOS CMOS settings using the jumper or the Syscfg utility resulting in the user having to perform an extra reboot of the system to recover the date in the proper format.
Status	This issue is fixed in BIOS45.

Workaround An additional reboot will reset the date format in BIOS setup. However, the user will have to set the date and time to the current local settings.

26. SuSE* SLES11 kernel may halt for 60 seconds during installation with default BIOS setting

Problem Customer may find SuSE* SLES11 kernel halts for 60 seconds during installation with default BIOS setting.

Implication When boots to SLES installation media, after clicking “installation” at the prompt, screen will go black and freeze for 60 seconds until USB keyboard “enter” key is pressed.

Status This issue is caused by a kernel bug.

Workaround Customer can wait 60 seconds or press “enter” key after screen freezes to continue with the installation.

27. Intel® Active System Console (IASC) 3.5.1 and 3.5.2 may fail to detect status of memory voltage sensors

Problem Intel® Active System Console (IASC) v3.5.1 and v3.5.2 is used to monitor hardware status on Intel server system. Intel® Xeon® 5500 Series Platforms start to support low voltage memory DIMM, so current FRUSDR has contained four memory voltage sensors "BB+1.5v P1DDR3", "BB+1.5v P2DDR3", "BB+1.35v P1DDR3" and "BB+1.35v P2DDR3", When system has 1.5v memory or 1.35v memory, only corresponding memory voltage sensors will be enabled, the other type memory voltage sensors will be disabled. IASC cannot judge the status of memory voltage sensors which have been disabled, and still try to detect those sensors reading. Because sensor reading is "0", lower than its threshold, so IASC shows those sensors status as critical warning. A screenshot of this failure is shown below.

Sensor Name	Current Value	1.36	1.40	1.58	1.63
BB +1.5V P2 DDR3	1.51	1.36	1.40	1.58	1.63
BB +1.8V AUX	1.78	1.67	1.71	1.87	1.92
BB +3.3V	3.31	2.98	3.06	3.52	3.62
BB +3.3V STBY	3.32	2.98	3.06	3.52	3.62
BB +3.3V Vbat	2.99	2.17	2.50	3.19	3.28
BB +5.0V	5.06	4.47	4.63	5.37	5.53
BB +5.0V STBY	5.12	4.47	4.63	5.37	5.53
BB +12.0V	12.09	10.73	11.10	12.92	13.28
BB -12.0V	-11.57	-13.29	-13.24	-10.63	-10.51
BB +1.35V P1DDR3	0.00	1.23	1.27	1.44	1.48
BB +1.35V P2DDR3	0.00	1.23	1.27	1.44	1.48

Implication IASC fails to judge the status of disabled sensors and still considers those sensors to server health algorithm.

Status This issue will be fixed in future IASC release.

Workaround None.

28. Wrong Fan Fault LED may glow if "other chassis" is selected when flashing FRUSDR21

Problem When users update FRUSDR21 and select "other chassis" in the update process, users may see CPU FAN2 Fault LED glow when the upgrade process finishes. This issue occurs only when one CPU is installed in the motherboard.

Implication The unexpected CPU FAN2 Fault LED glowing event is due to a FRUSDR issue, however, there will be no functional impact to the system.

Status This issue is fixed by FRUSDR25.

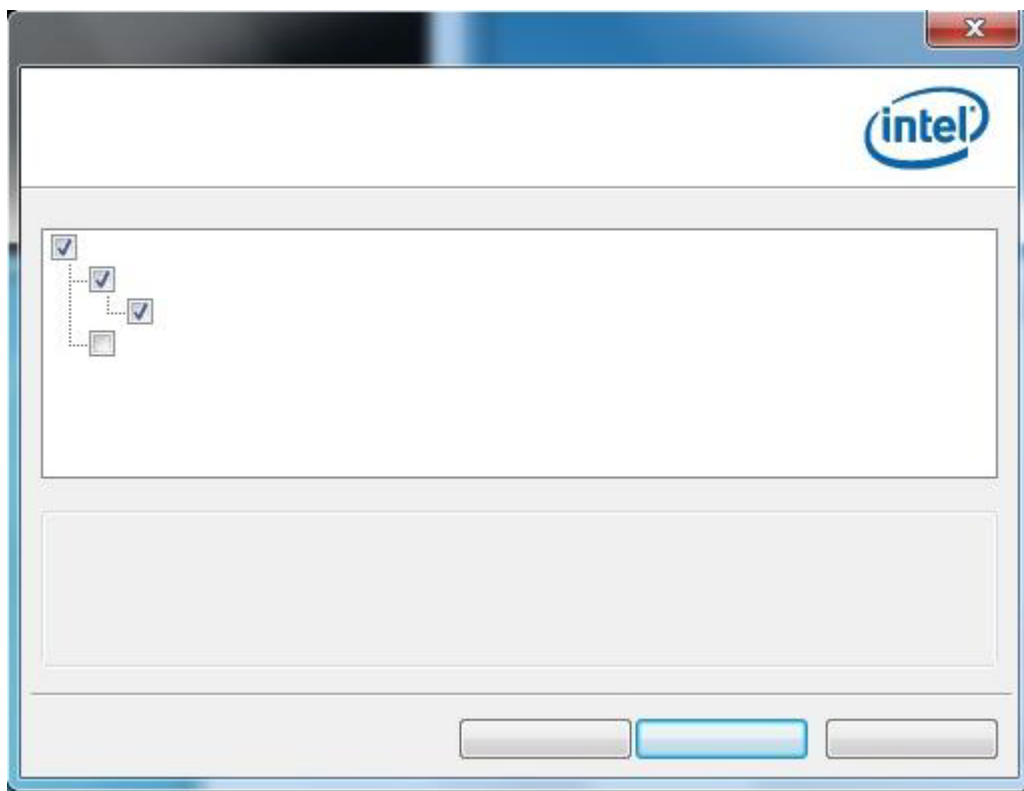
Workaround None.

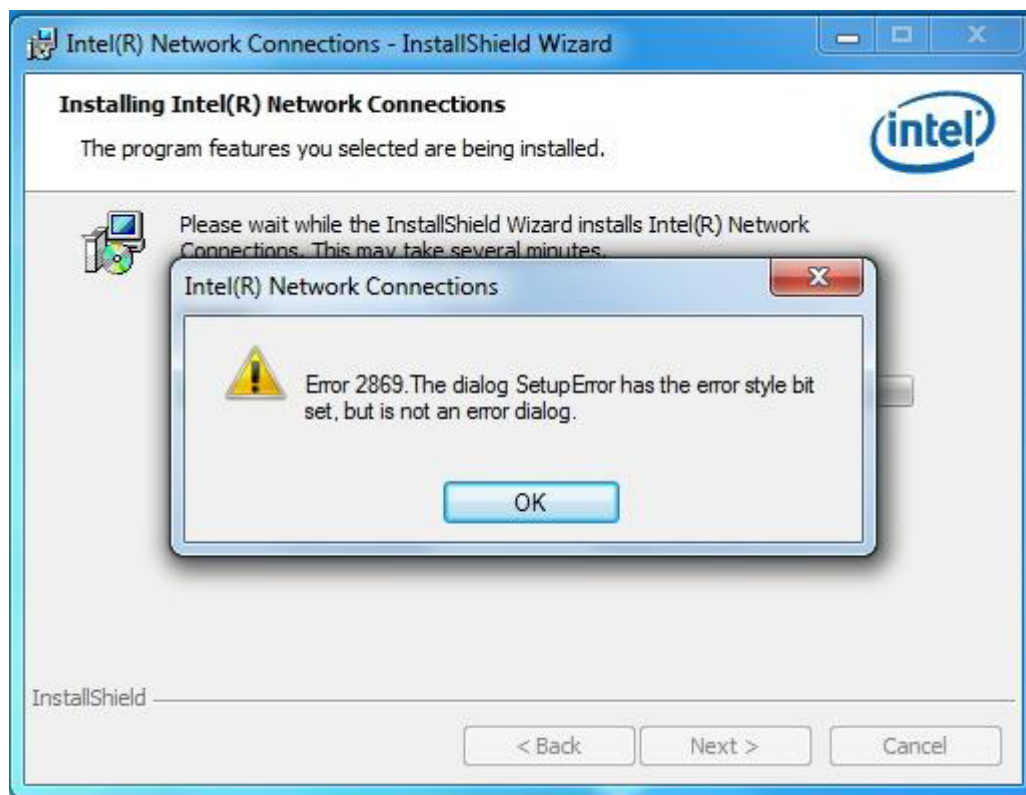
29. Processor 01 Fan sensor may not display as expected in FRUSDR25

Problem	When users update FRUSDR25 and select “Intel® Server Chassis SC5650BRP” or “Intel® Workstation Chassis SC5650WS” in the update process, users may find Processor 01 fan sensor disappear once FRUSDR update is completed.
Implication	Users may not be able to check processor 01 fan sensor status.
Status	This issue is fixed by FRUSDR28.
Workaround	None.

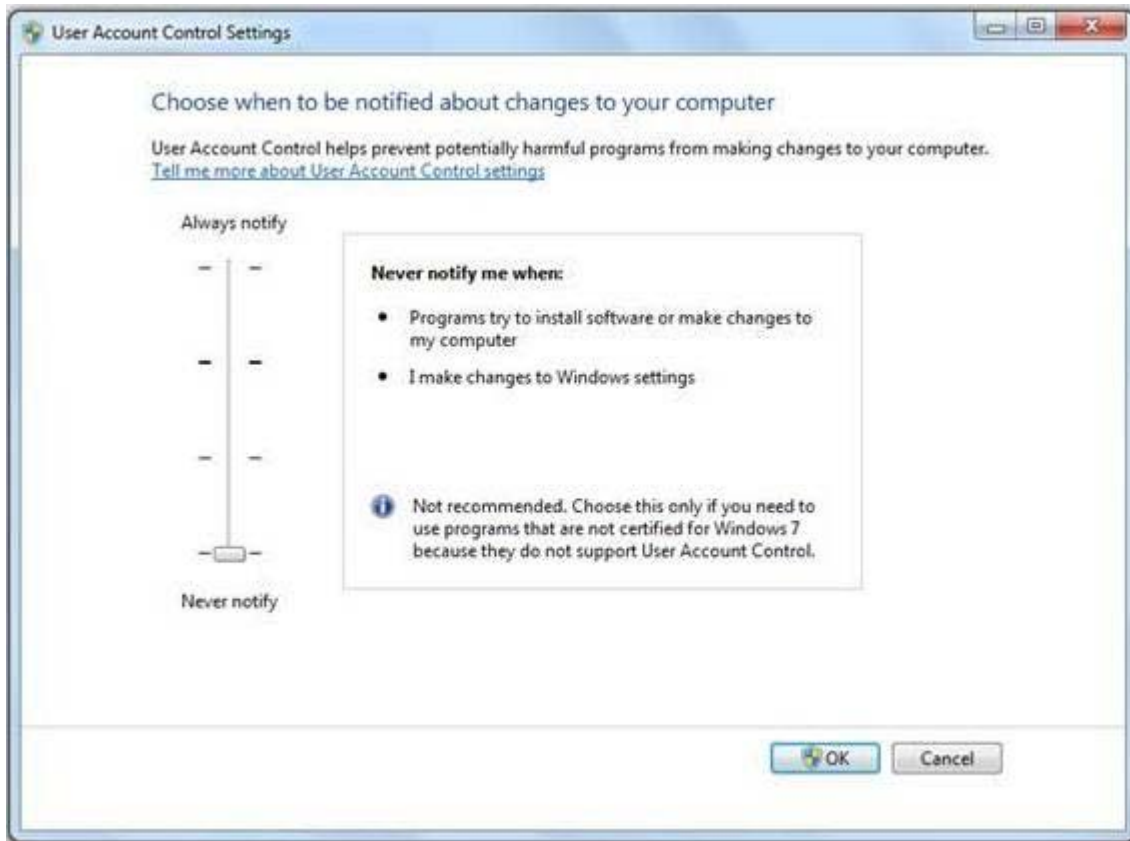
30. NIC driver 15.1.1 may not be installed properly in Microsoft Windows Vista* or Microsoft Windows 7*

Problem	Users may find onboard NIC (Network Interface Card) driver version 15.1.1 may not get installed properly in Microsoft Windows Vista* or Microsoft Windows 7* when UAC (User Access Control) is set as "Default". Problem may occur during the installation process of the NIC driver, scramble display and unexpected message may display as following:
---------	---





- Implication** This is a permissions issue with Microsoft Windows Vista* and later operating systems. Permissions don't get elevated installing with PROSETDX.MSI, which is the file the batch file in the root directory points to. DXsetup gets the permissions elevated on Microsoft Windows Vista* and later operating systems, but they don't get elevated if you launch the MSI without DXsetup.
- Status** This issue will be fixed by future NIC driver release.
- Workaround** The following workaround can be used to navigate around the issue.
1. Users can browse to the \apps\prosetdx\<os version> directory in the NIC driver package and launch DxSetup.exe.
 2. Users can also refer to below picture to set Windows UAC (User Account Control) to "Never notify", re-install the driver after a system reboot.



31. Inaccurate HSC FW revision displayed in BIOS setup

Problem	With baseboard BIOS version R0050 and BMC version 53, the HSC FW revision may be inaccurately shown as 123.415 instead of 0.00 if there is no backplane connected to the board or system. HSC FW revision is located at the BIOS setup Server Information page (Server Management – Server Information – HSC Firmware Revision).
Implication	There is no functional impact associated with this erratum.
Status	This erratum will be fixed in future BIOS release.
Workaround	None.

32. System may go to EFI first instead of Hardware RAID configuration setup page.

Problem	System may go to EFI first instead of Hardware RAID configuration setup page when using Hardware Raid and setting EFI as the first boot device
Implication	There is no functional impact associated with this erratum.
Status	This issue may be fixed in a future BIOS revision.
Workaround	1, Change EFI booting order instead of first boot device. 2, Type “EXIT” in Internal EFI shell, then users can enter Raid configuration setup page.

33. Lower network performance may be observed when Hyper-V role is added in Windows Server 2008 R2 with more than 32G memory.

Problem	On a dual Intel® Xeon® 5600 series processor configuration with more than 32GB memory installed, user may notice network performance drop in Windows Server 2008 R2 when Hyper-V role is added.
Implication	User may see lower than expected network performance under windows Server 2008 R2.
Status	This erratum may be fixed in a future BIOS release.
Workaround	Reduce memory size to less than 32GB.

34. System with BIOS Revision R0054 may hang when Adaptec* 5405 or 5805 RAID card installed.

Problem	On a system with the Adaptec* 5405 or 5805 RAID card installed, the system may hang during POST.
Implication	User may experience system hangs during POST with above system configuration.
Status	This issue may be fixed in a future BIOS revision.
Workaround	Use BIOS revision R0050.

35. System may not enter LSI* 9260-4i/8i RAID card webBIOS when both LSI*9260-4i/8i RAID card and LSI* 20320-R SCSI card installed

Problem	System may not enter LSI* 9260-4i/8i RAID card webBIOS with both LSI* 9260-4i/8i RAID card and LSI* 20320-R SCSI card installed
Implication	User may find not able to go into LSI* 9260-4i/8i RAID card webBIOS even Ctrl+H was pressed.
Status	This issue may be fixed in a future BIOS revision.
Workaround	Press CTRL key again when see blinking cursor, the blinking cursor will be on the top left corner when Ctrl+H was pressed.

Documentation Changes

None.