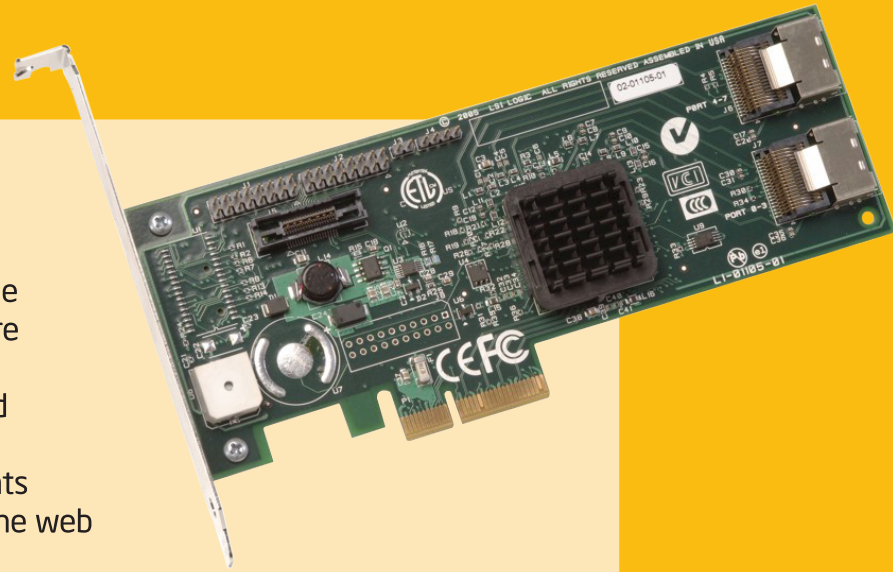


# Intel® RAID Controller SASMF81

## Quick Start User's Guide

This guide contains step-by-step instructions for installing Microsoft Windows Server 2003\* / Microsoft Windows 2000\* Advanced Server, or Linux on a single RAID volume using available disks. If you plan to use a different operating system, need a more advanced RAID configuration, or need safety and regulatory information, see the Hardware and Software Guides. You can find these guides on the Resource CD accompanying the Intel® RAID Controller SASMF81. These guides and other supporting documents (including a list of supported server boards) are also located on the web at: <http://support.intel.com/support/motherboards/server>.

If you are not familiar with ESD (Electrostatic Discharge) procedures used during system integration, see your Hardware Guide for complete ESD procedures. For more details on Intel® storage controllers, see: [www.intel.com/go/serverbuilder](http://www.intel.com/go/serverbuilder).



### What you will need

- SAS / SATA hard disk drives
- Intel® RAID Controller SASMF81
- Server board with a x4 or x8 PCI Express\* slot
- Intel® RAID Controller SASMF81 Resource CD
- Operating system installation media: Microsoft Windows Server 2003\*, Microsoft Windows 2000\* Advanced Server, Red Hat\* Linux, SUSE\* Linux Enterprise Server, or Novell\* NetWare 6.5

### Important Information

You can find the Hardware and Software Guides on the Resource CD that accompanied the Intel® RAID Controller SASMF81.

These guides and other supporting documents (including a list of supported server boards) are located on the web at: <http://support.intel.com/support/motherboards/server>.



## Building Value With Intel

### Server Products, Programs and Support

Get the high-value server solutions you need by taking advantage of the outstanding value Intel provides to system integrators:

- High-quality server building blocks
- Extensive breadth of server building blocks
- Solutions and tools to enable e-Business
- Intel® Server Management
- Comprehensive training services
- Worldwide 24x7 technical support (AT&T Country Code + 866-655-6565)<sup>1</sup>
- World-class service, including a three-year limited warranty and Advanced Warranty Replacement<sup>1</sup>

For more information on Intel's added-value server offerings, visit the Intel® ServerBuilder website at: [www.intel.com/go/serverbuilder](http://www.intel.com/go/serverbuilder).

Intel® ServerBuilder is your one-stop shop for information about all of Intel's Server Building Blocks such as:

- Product information, including product briefs and technical product specifications
- Sales tools, such as videos and presentations
- Training information, such as the Intel® Online Learning Center
- Support Information and much more

<sup>1</sup>Available only to Intel® Channel Program Members, part of Intel® e-Business Network.

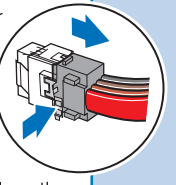
## 2 Attach SAS / SATA Cables

To attach a cable that connects to a backplane board, see your server board and chassis documentation.

See the "Intel® RAID Controller SASMF81 Diagram" on side 2 of this Quick Start User's Guide for SAS / SATA connector locations.

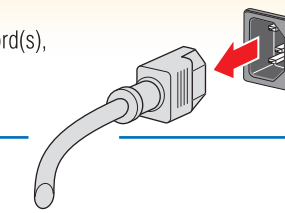
- 1 Connect the wide end of the provided SAS / SATA cable to connector J6 (ports 4-7) or J7 (ports 0-3) on the Intel® RAID Controller SASMF81.

**Note:** The cable locks into the J6 (ports 4-7) or J7 (ports 0-3) connector. If you later need to remove the cable, press down firmly on the metal spring to disengage the two hooks that hold the end of the cable in place. While holding the tab down, pull the cable end from the onboard connector. Pulling on the cable or the cable connector without disengaging the hooks will damage the cable and / or the connector on the disk controller.

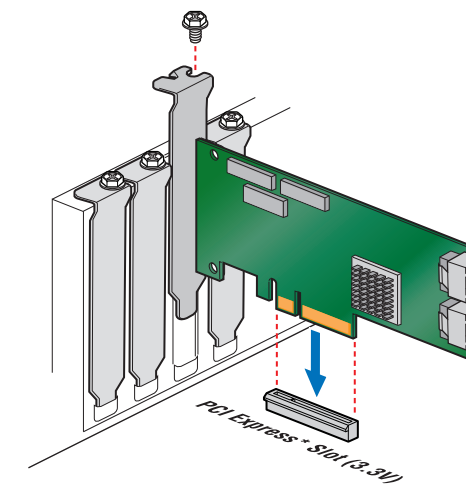


## 1 Install the Intel® RAID Controller SASMF81

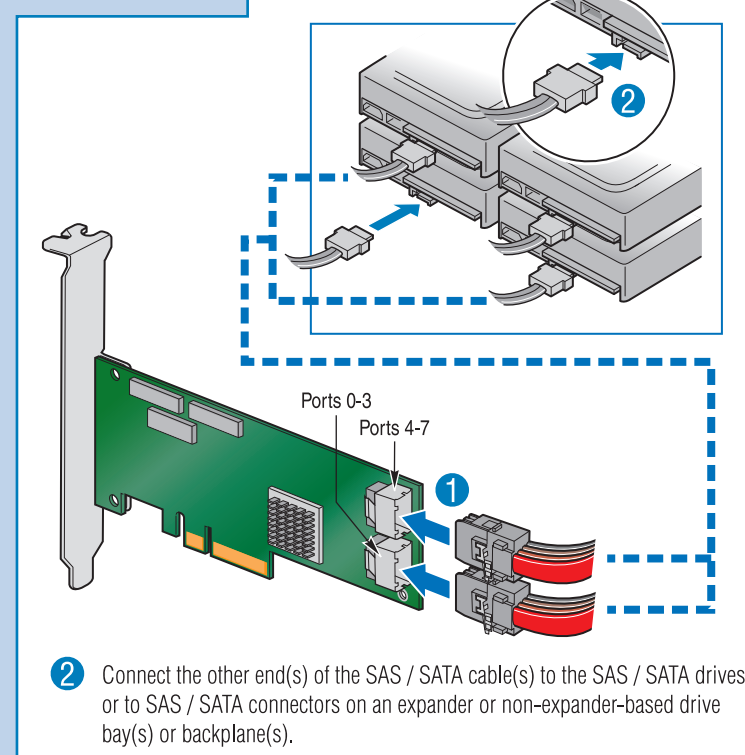
- 1 Power down the system, disconnect power cord(s), and remove the system cover.



- 2 Install the Intel® RAID Controller SASMF81 into an available x4 or x8 PCI Express slot.



**Note:** See your server board and chassis documentation for add-in card installation procedure(s).

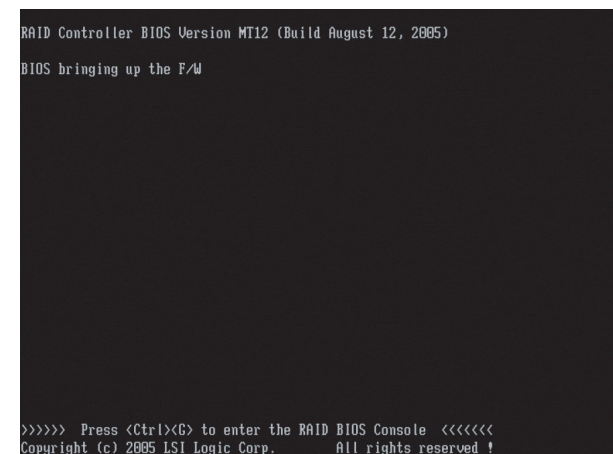


- 2 Connect the other end(s) of the SAS / SATA cable(s) to the SAS / SATA connectors on an expander or non-expander-based drive bay(s) or backplane(s).

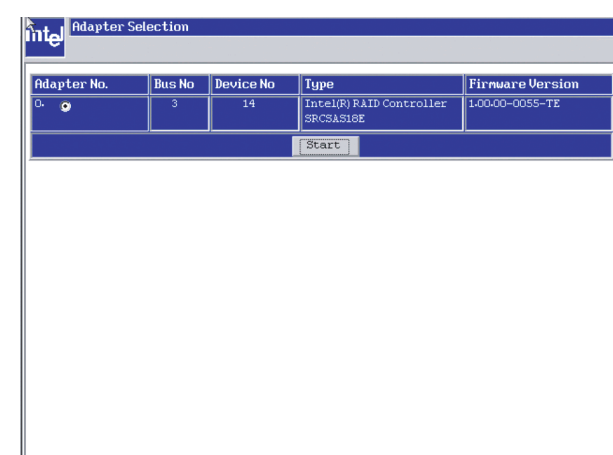
## 3 Use the Intel® RAID BIOS Console 2 Utility to Create a RAID Volume

Note: As necessary, see "Choosing the Right RAID Level" on side 2 of this Quick Start User's Guide for a brief description of RAID levels.

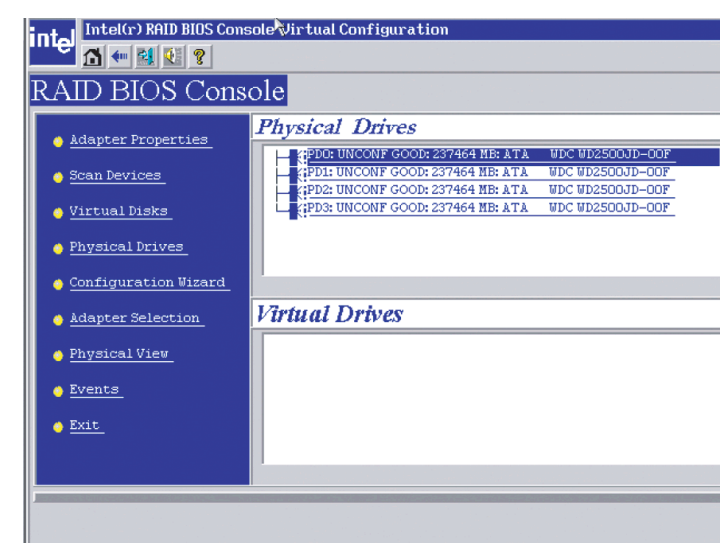
- 1 Power on the system and press <Ctrl> + <G> when the screen below is displayed.



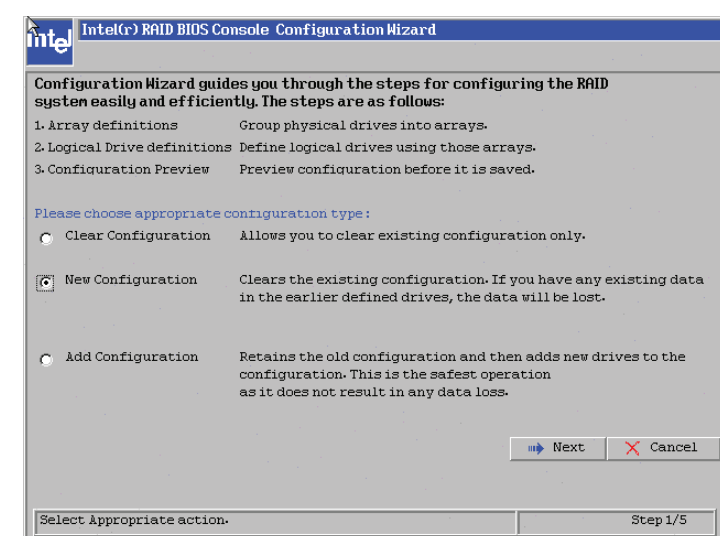
- 2 When Intel® RAID BIOS Console 2 starts, it will display the Intel® RAID Controller SASMF81 installed in the system. Click on the "Adapter No." radio button, then click **Start**.



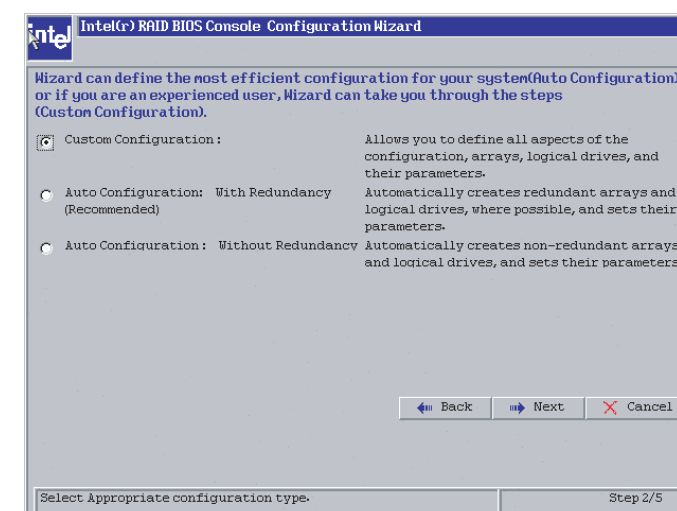
- 3 After a brief pause, the Intel® RAID BIOS Console 2 screen is displayed. Click **Configuration Wizard**.



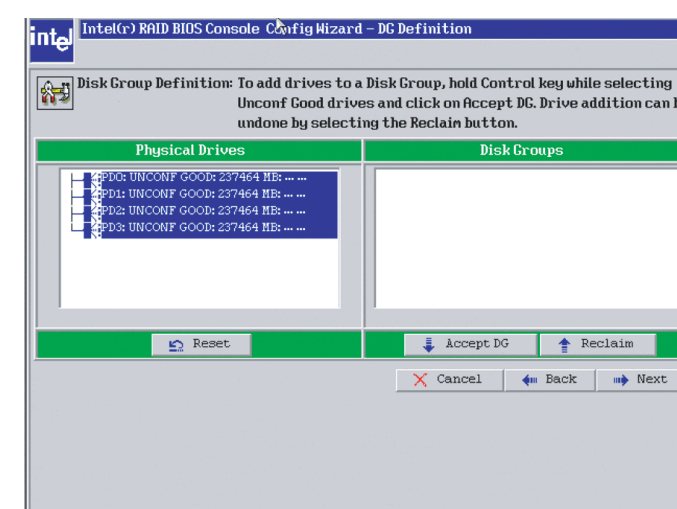
- 4 Select **New Configuration** and click **Next**.



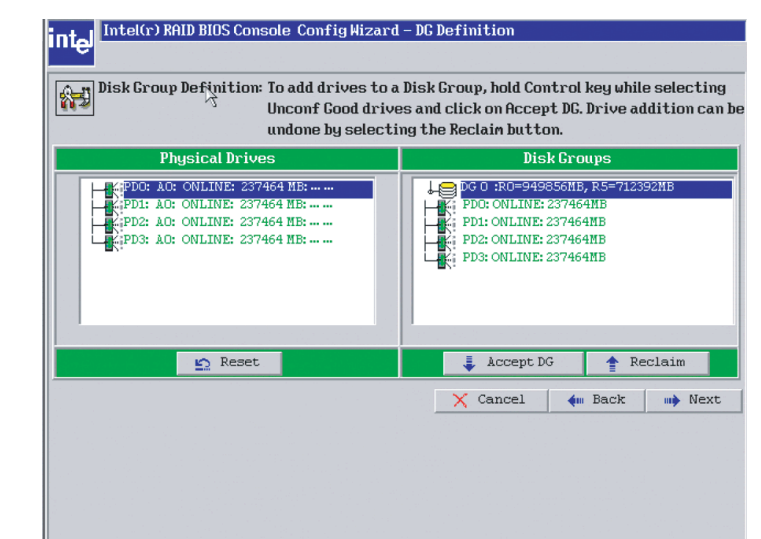
- 5 For this example, **Custom Configuration** is used. Click **Next**. (For further information, see the Software Guide on the Resource CD.)



- 6 Add physical drives to the array by pressing the Ctrl key while clicking on entries under Physical Drives. Once you have selected all of the drives you wish to add to the array, click **Accept DG**. Click **Next**.



- 7 Define further arrays or click **Accept DG** if finished. Click **Next**.



- 8 Select the **RAID Level** from the pull-down box. Select the **Stripe Size**. Enter the size of the logical drive. Click **Accept**. Click **Next** if the program does not automatically progress to the next screen.

