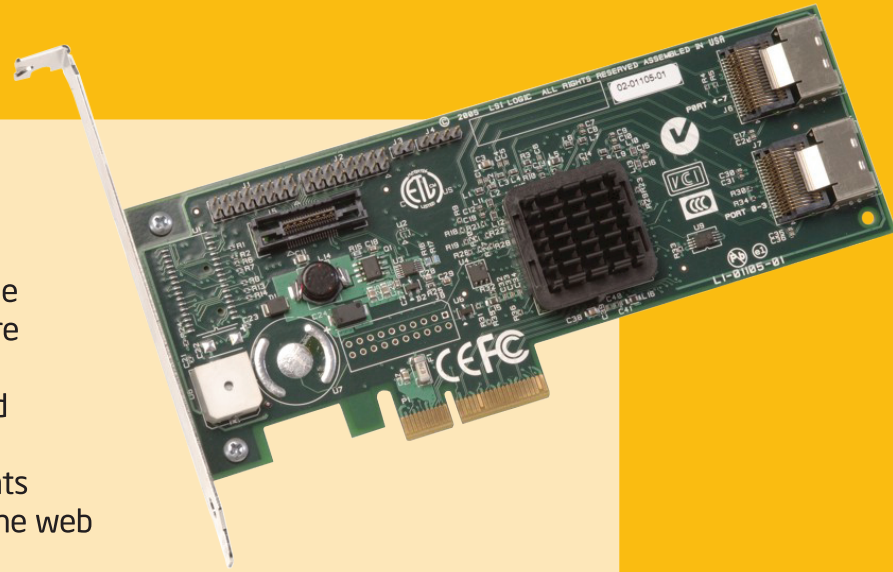


Intel® RAID Controller SASMF81 Quick Start User's Guide



This guide contains step-by-step instructions for installing Microsoft Windows Server 2003* / Microsoft Windows 2000* Advanced Server, or Linux on a single RAID volume using available disks. If you plan to use a different operating system, need a more advanced RAID configuration, or need safety and regulatory information, see the Hardware and Software Guides. You can find these guides on the Resource CD accompanying the Intel® RAID Controller SASMF81. These guides and other supporting documents (including a list of supported server boards) are also located on the web at: <http://support.intel.com/support/motherboards/server>.

If you are not familiar with ESD (Electrostatic Discharge) procedures used during system integration, see your Hardware Guide for complete ESD procedures. For more details on Intel® storage controllers, see: www.intel.com/go/serverbuilder.

What you will need

- SAS / SATA hard disk drives
- Intel® RAID Controller SASMF81
- Server board with a x4 or x8 PCI Express* slot
- Intel® RAID Controller SASMF81 Resource CD
- Operating system installation media: Microsoft Windows Server 2003*, Microsoft Windows 2000* Advanced Server, Red Hat* Linux, SUSE* Linux Enterprise Server

Important Information

You can find the Hardware and Software Guides on the Resource CD that accompanied the Intel® RAID Controller SASMF81.

These guides and other supporting documents (including a list of supported server boards) are located on the web at: <http://support.intel.com/support/motherboards/server>.



Building Value With Intel

Server Products, Programs and Support

Get the high-value server solutions you need by taking advantage of the outstanding value Intel provides to system integrators:

- High-quality server building blocks
- Extensive breadth of server building blocks
- Solutions and tools to enable e-Business
- Intel® Server Management
- Comprehensive training services
- Worldwide 24x7 technical support (AT&T Country Code + 866-655-6565)
- World-class service, including a three-year limited warranty and Advanced Warranty Replacement

For more information on Intel's added-value server offerings, visit the Intel® ServerBuilder website at: www.intel.com/go/serverbuilder.

Intel® ServerBuilder is your one-stop shop for information about all of Intel's Server Building Blocks such as:

- Product information, including product briefs and technical product specifications
- Sales tools, such as videos and presentations
- Training information, such as the Intel® Online Learning Center
- Support Information and much more

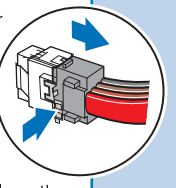
2 Attach SAS / SATA Cables

To attach a cable that connects to a backplane board, see your server board and chassis documentation.

See the "Intel® RAID Controller SASMF81 Diagram" on side 2 of this Quick Start User's Guide for SAS / SATA connector locations.

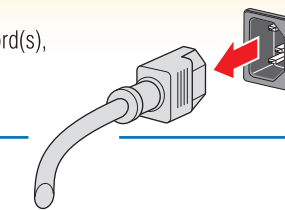
- 1 Connect the wide end of the provided SAS / SATA cable to connector J6 (ports 4-7) or J7 (ports 0-3) on the Intel® RAID Controller SASMF81.

Note: The cable locks into the J6 (ports 4-7) or J7 (ports 0-3) connector. If you later need to remove the cable, press down firmly on the metal spring to disengage the two hooks that hold the end of the cable in place. While holding the tab down, pull the cable end from the onboard connector. Pulling on the cable or the cable connector without disengaging the hooks will damage the cable and / or the connector on the disk controller.

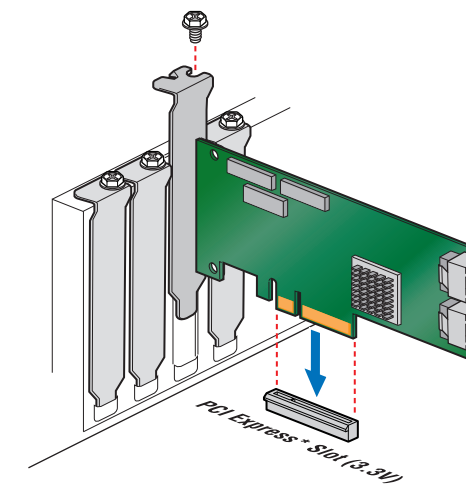


1 Install the Intel® RAID Controller SASMF81

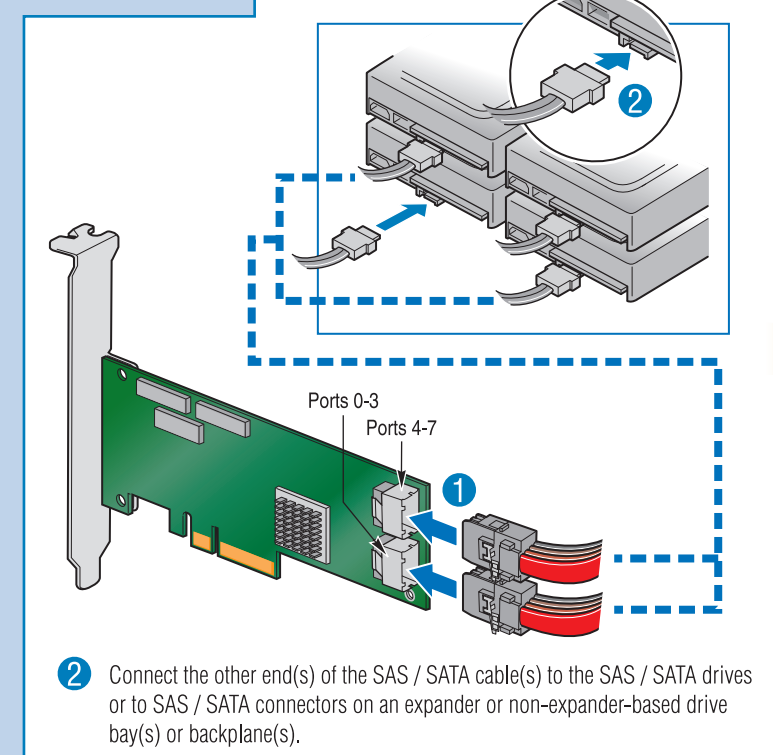
- 1 Power down the system, disconnect power cord(s), and remove the system cover.



- 2 Install the Intel® RAID Controller SASMF81 into an available x4 or x8 PCI Express* slot.



Note: See your server board and chassis documentation for add-in card installation procedure(s).

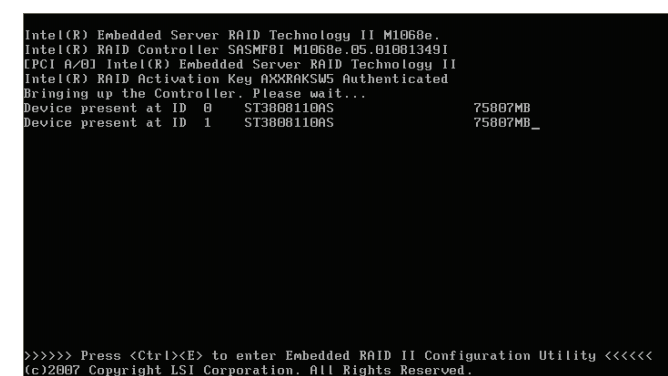


- 2 Connect the other end(s) of the SAS / SATA cable(s) to the SAS / SATA connectors on an expander or non-expander-based drive bay(s) or backplane(s).

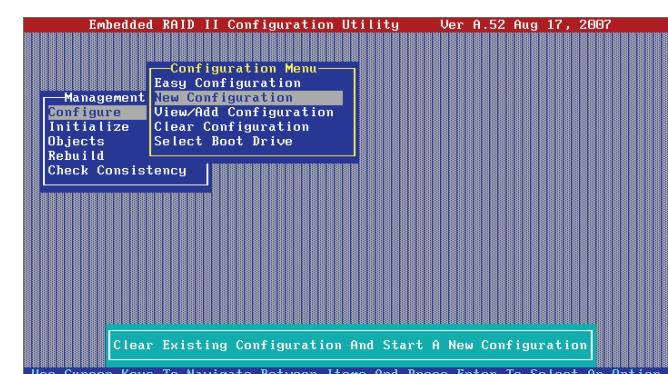
3 Use the Intel® Embedded Server RAID II Configuration Utility to Create a RAID Virtual Drive

Note: As necessary, see "Choosing the Right RAID Level" on side 2 of this Quick Start User's Guide for a brief description of RAID levels.

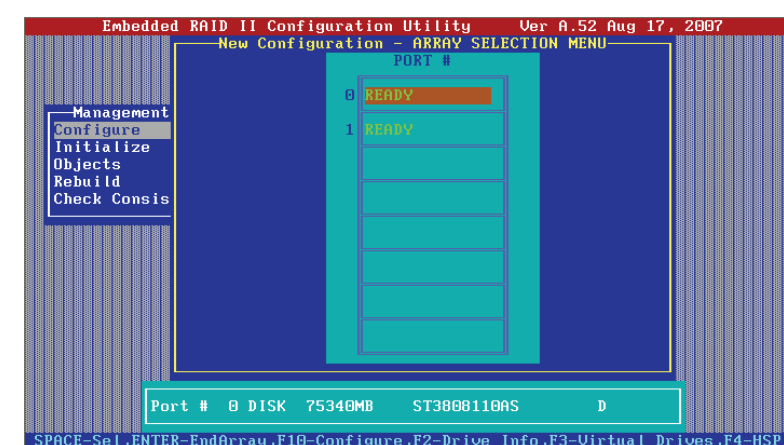
- 1 Power on the system and press <Ctrl> + <E> when the screen below is displayed.



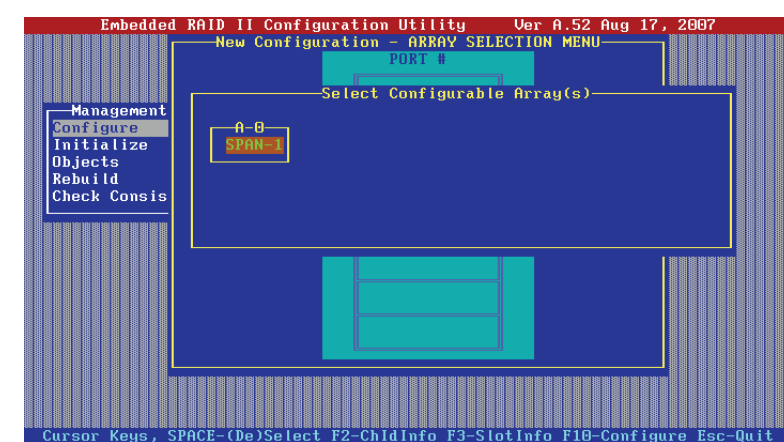
- 2 In the Configuration Utility window, choose **Configure** and press <Enter>. Then select **New Configuration** and press <Enter>.



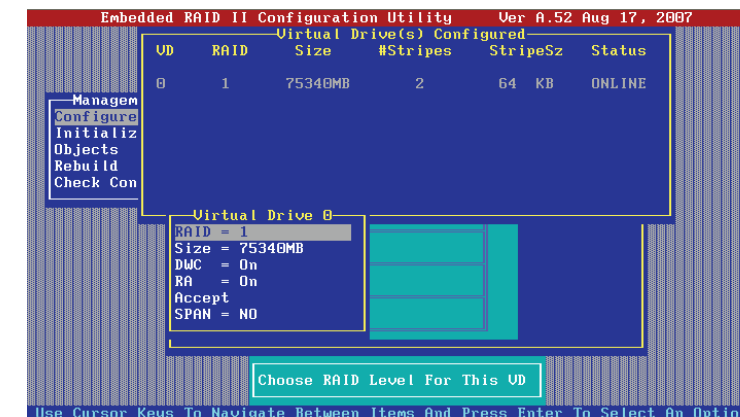
- 3 Press <Space> to select a hard drive and then press <F10>.



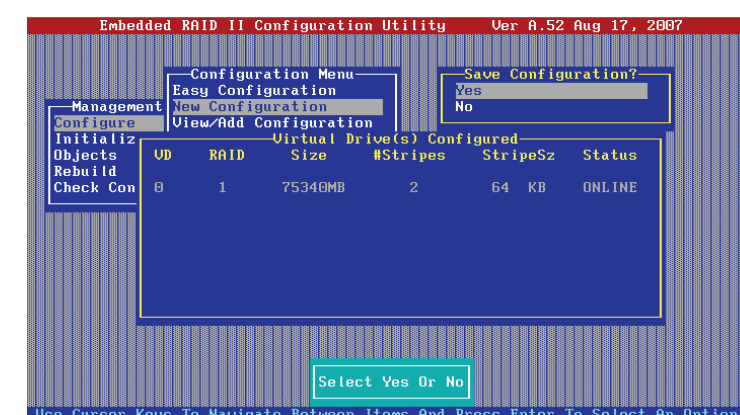
- 4 Press <Space> to display the following screen and then press <F10>.



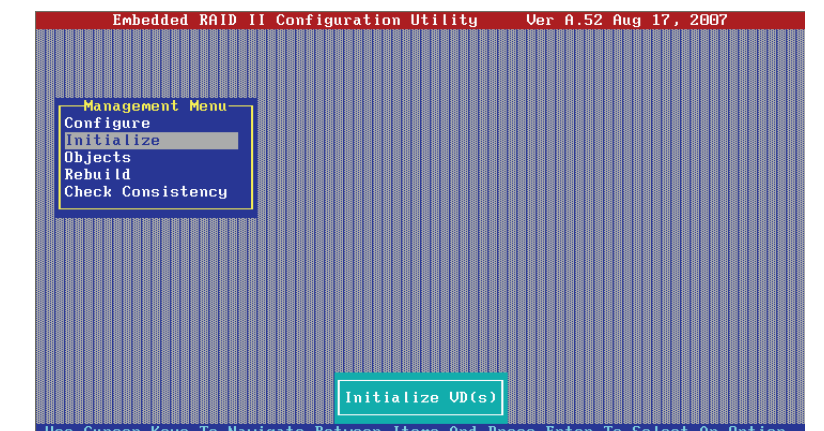
- 5 Select an option and press <Enter> to change the settings. Click **Accept** to confirm.



- 6 Select **Yes** and press <Enter> to save the configuration.



- 7 Press <Esc> to return to the main menu. Select **Initialize** and press <Enter>.



- 8 Press <Space> to choose the Virtual Drives and then press <F10> to initialize.

