



Intel® Server Chassis SR1400 Quick Start User's Guide



Thank you for buying an Intel® Server Chassis. The following information will help you assemble your Intel® Server Chassis and install components.

This guide and other supporting documents are located on the web at <http://support.intel.com/support/motherboards/server>

If you are not familiar with ESD (Electrostatic Discharge) procedures used during system integration, please see the Intel® Server Chassis SR1400 User Guide, available on the CD or at <http://support.intel.com/support/motherboards/server>

Warning

Read all caution and safety statements in this document before performing any of the instructions. Also see the *Intel® Server Board and Server Chassis Safety Information* document at: <http://support.intel.com/support/motherboards/server/sb/cs-010770.htm> for complete safety information.

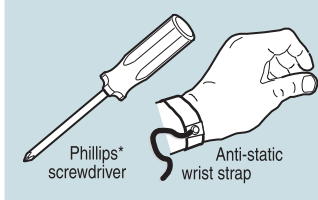
Warning

Installation and service of this product to be performed only by qualified service personnel to avoid risk of injury from electrical shock or energy hazard.

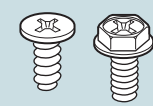
Caution

Observe normal ESD [Electrostatic Discharge] procedures during system integration to avoid possible damage to server board and/or other components.

Tools Required



Fastener Identification Guide



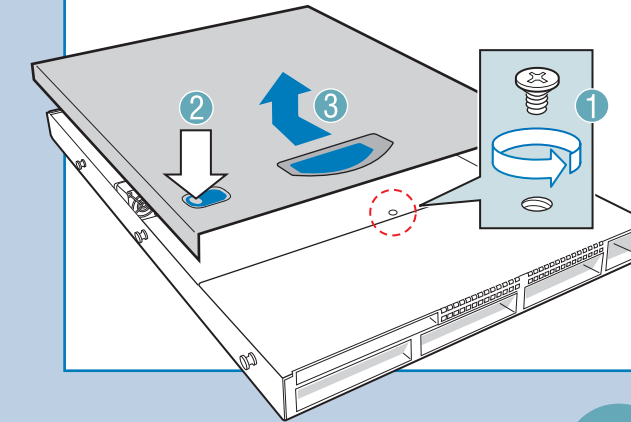
Minimum Hardware Requirements

To avoid integration difficulties, make sure you have one item from each category below. Order codes are in parenthesis after each item.

- Control Panel Options:**
 - Intel® Local Control Panel (AXXLCPRACK)
 - Standard Control Panel (AXXRACKFP)
- Drive Options:**
 - 1U SCSI Backplane Kit (A1400SCSIKIT)
 - 1U SATA Backplane Kit (A1400SATAKIT)
 - 1U/2U Fixed Drive Kit (AFIXDRVKIT)
- Full Height Riser Options:**
 - Full Height PCI-Express® Riser (ADRPCIEXPRI)
 - Full Height PCI-X Riser (ADRPCIXRIS)

1 Remove the Top Cover

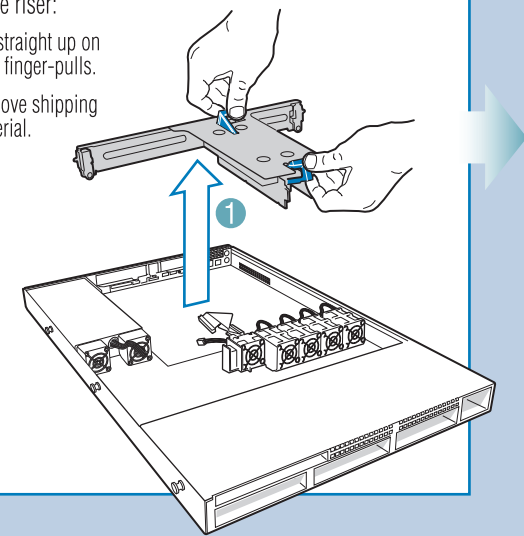
- Remove the shipping screw.
- Depress the latch.
- Slide the top cover toward the rear and lift upward.



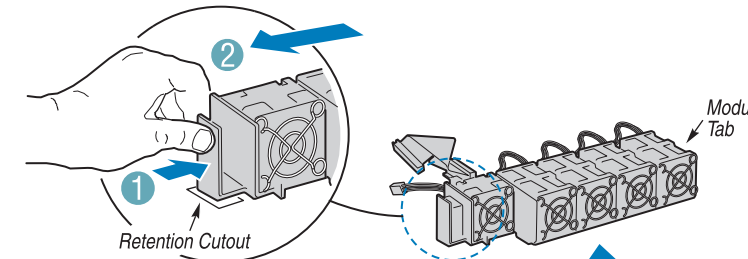
2 Remove Add-in Card Riser Assembly

To remove riser:

- Lift straight up on blue finger-pulls.
- Remove shipping material.



3 Remove the Fan Module



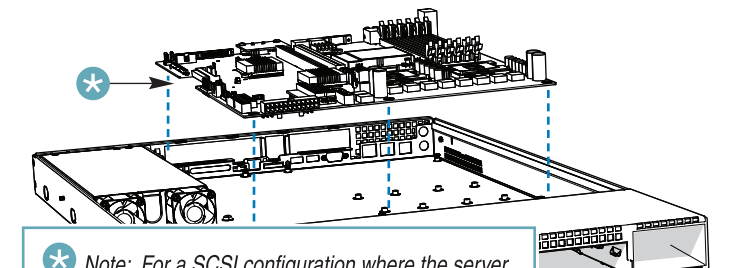
- Push on tab to release fan module from the chassis.
- Slide fan module toward the power supply and lift it up and out of the chassis.

Note: Fan module is secured to the chassis by matching slots and tabs. Make sure module releases fully before lifting it from chassis.

4 Install Server Board

See your Intel® Server Board Quick Start User's Guide for server board installation instructions.

Open the Intel® Server Board box. Follow the instructions in the enclosed Intel® Server Board Quick Start User's Guide and return to this document when finished.

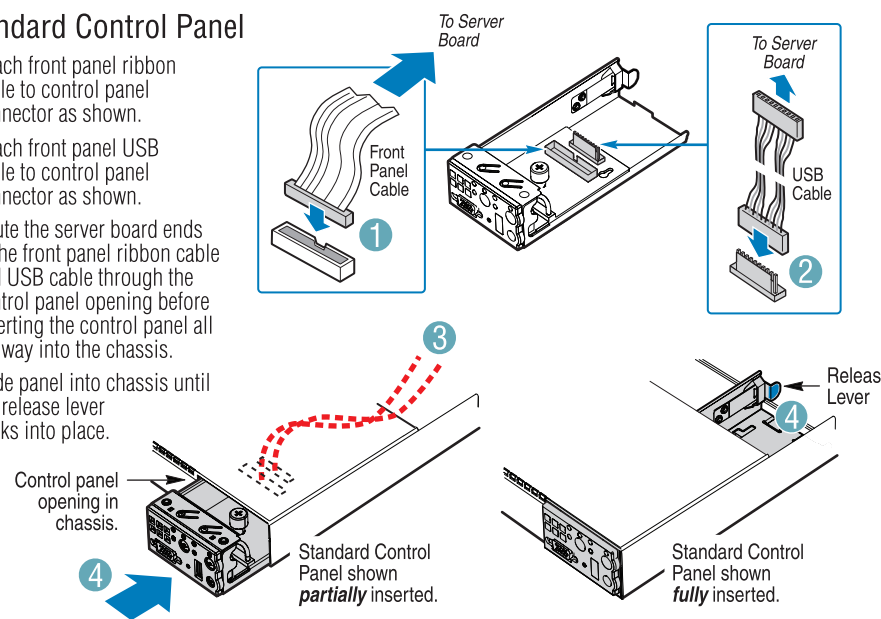


** Note: For a SCSI configuration where the server board SCSI connector is located on the power supply side of the server board, attach the SCSI cable to the server board before installing the server board into the chassis.*

5 Install Front Panel Control Module *Select the procedure below that matches your front panel control module*

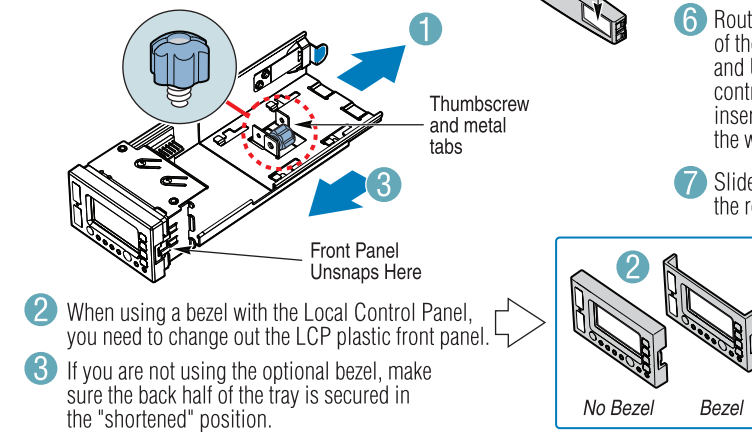
• Standard Control Panel

- Attach front panel ribbon cable to control panel connector as shown.
- Attach front panel USB cable to control panel connector as shown.
- Route the server board ends of the front panel ribbon cable and USB cable through the control panel opening before inserting the control panel all the way into the chassis.
- Slide panel into chassis until the release lever clicks into place.

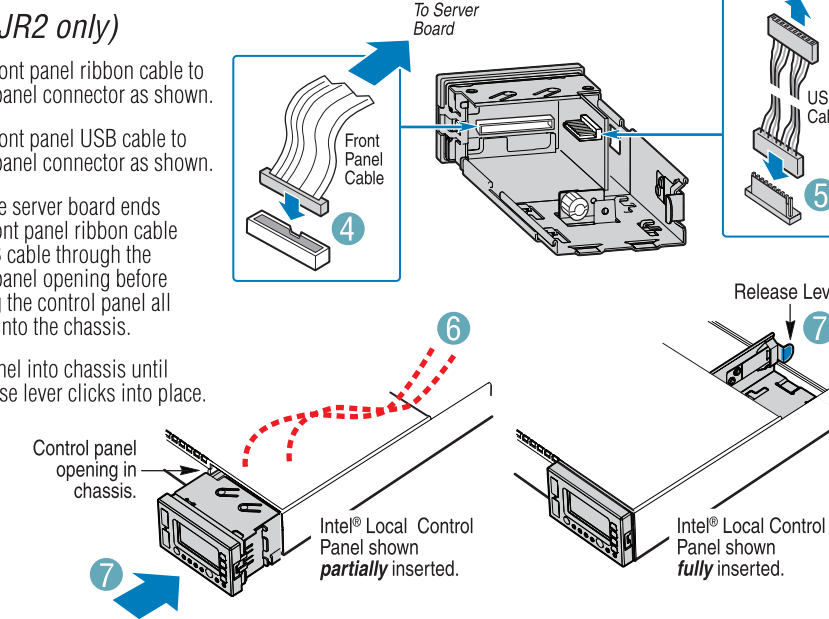


• Intel® Local Control Panel (for Intel® Server Board SE7520JR2 only)

- If you plan to install the bezel that matches the Intel® Local Control Panel, remove the thumbscrew and slide the back half of the tray rearward as shown and re-install the thumbscrew into the metal tabs.



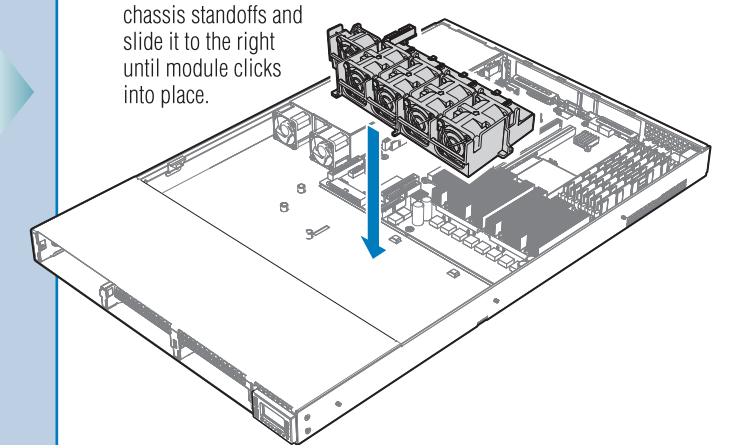
- Attach front panel ribbon cable to control panel connector as shown.
- Attach front panel USB cable to control panel connector as shown.
- Route the server board ends of the front panel ribbon cable and USB cable through the control panel opening before inserting the control panel all the way into the chassis.
- Slide panel into chassis until the release lever clicks into place.



6 Reinstall the Fan Module

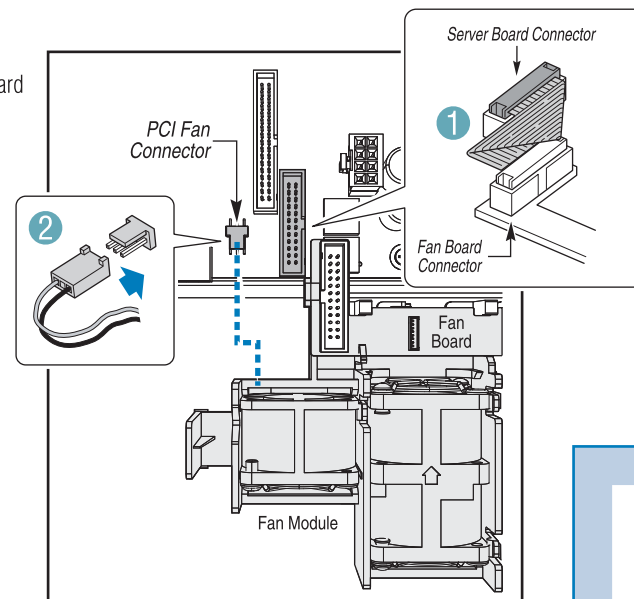
Note: Fan module is secured to the chassis by matching slots and standoffs. Make sure module engages chassis standoffs correctly.

Place module over chassis standoffs and slide it to the right until module clicks into place.



7 Make Fan Module Power Connections

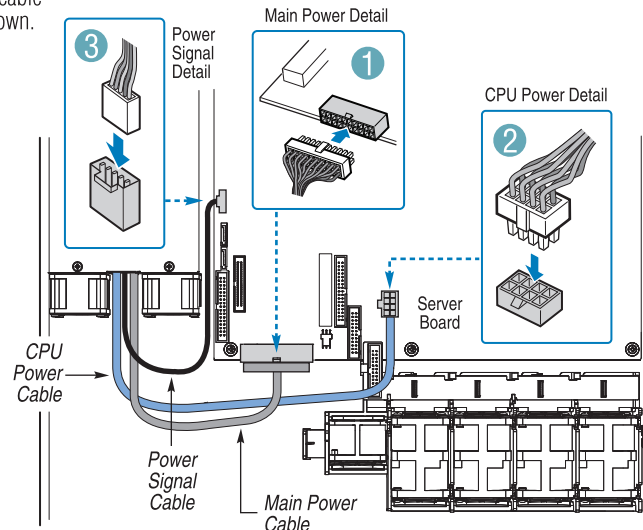
- Connect fan board ribbon cable to server board as shown.
- Connect fan module cable to server board as shown.



8 Make System Connections

• Main Power Cable, CPU Power Cable and Power Signal Cable

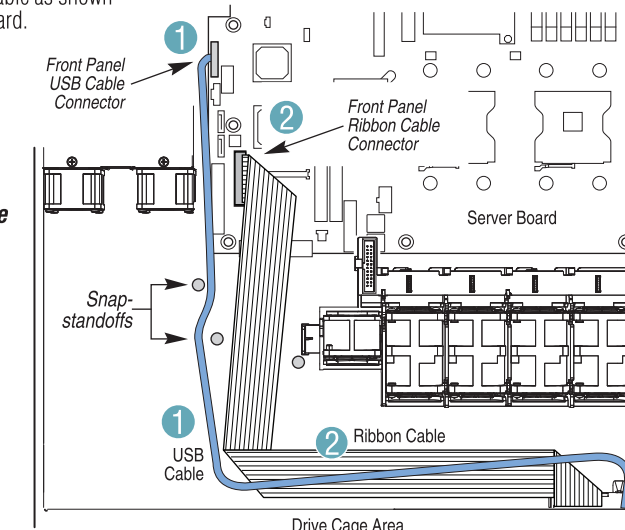
- Connect main power cable to server board as shown.
- Attach CPU power cable to server board as shown.
- Attach power signal cable to server board as shown.



9 Make System Connections (for fixed SATA integrations only)

• Front Panel USB Cable and Front Panel Ribbon Cable

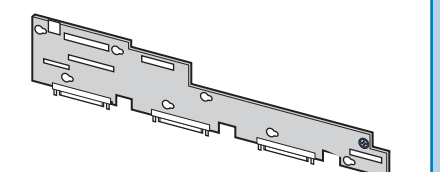
- Route front panel USB cable as shown and connect to server board. *Note that cable goes between the snap-standoffs as indicated.*
- Disregard this step if you are installing an optional backplane board.** Route front panel ribbon cable as shown and connect to server board.



10 Install Backplane Kit (optional)

Refer to the instructions included with your Backplane Kit.

Upon completing those instructions continue, starting at Step 12.



C51494-004

