

7 Making Connections to the Server Board ... Quick Reference

Intel® Server Chassis SC5275-E Note: When installing your server board into the Intel® Server Chassis SC5275-E, install the hard drive bay before making your connections. See the Intel® Server Chassis SC5275-E Quick Start User Guide for instructions on installing the drive bay.

Required Connections for Selected Chassis

	SC5300 - all configurations	SC5275-E
B. Main Power Connector	■	■
C. Auxiliary Signal Connector	■	■
E. +12V CPU Power Connector	■	■
L. Front Panel Connector	■	■
M. Primary IDE Connector [bottom, BLUE connector]	■	■
P. Chassis Intrusion Header	■	■

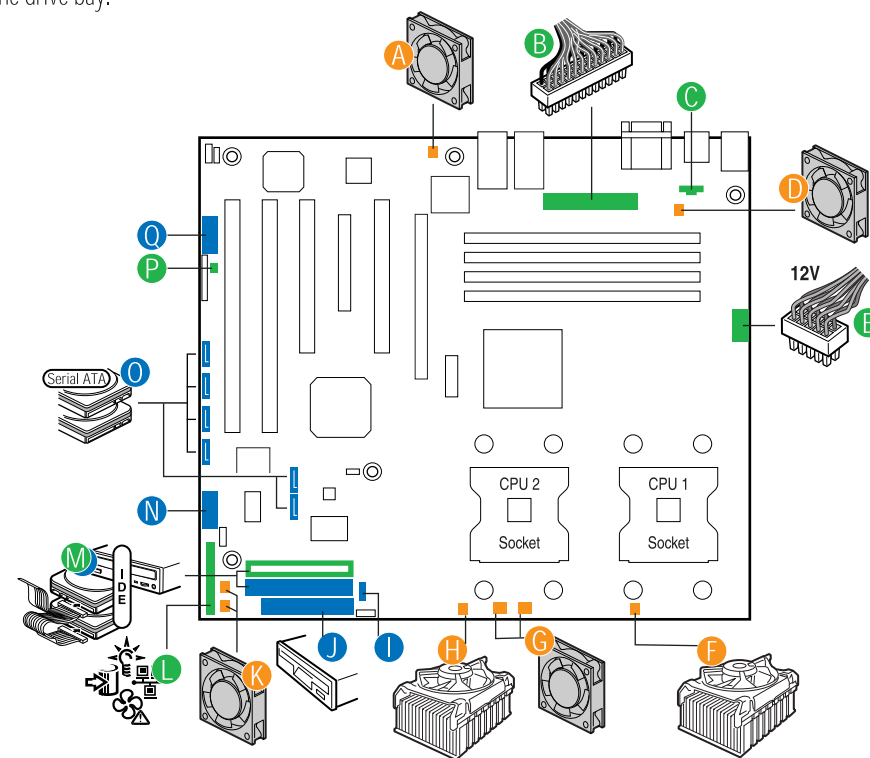
CPU/System Fan Connections for Selected Chassis

	SC5300 Base	SC5275-E
A. System Fan 2 Header	■	■
D. System Fan 1 Header	■	■
F. CPU1 Fan Header	■	■
G. System Fan 5 Header [left]	■	■
System Fan 6 Header [right]	■	■
H. CPU2 Fan Header ... if CPU2 is installed	■	■
K. System Fan 3 Header [top]	■	■
System Fan 4 Header [bottom]	■	■

Optional Connections for Selected Chassis

	SC5300 Base	SC5275-E
I. Hot-swap Backplane Header	■	■
J. Floppy Connector	■	■
K. Secondary IDE Connector [top, white connector]	■	■
N. Front USB Header	■	■
O. SATA 1-6 [SE7320SP2 only]	■	■
SATA 1-2 [SE7525GP2 only]	■	■
Q. Serial B Header	■	■

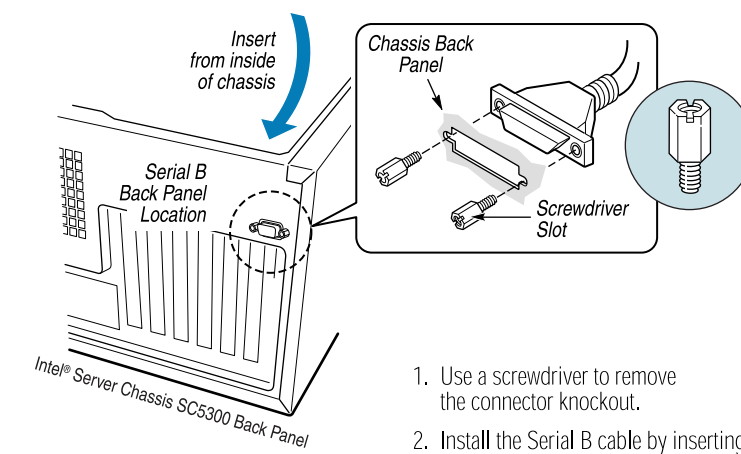
Note: All available server board connections are not shown. Your configuration may vary.



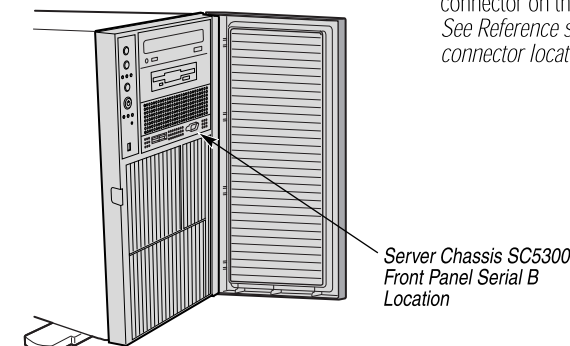
Note: Not all optional connections are shown in this diagram. Refer to the Reference section of this Quick Start User's Guide, your Intel® Server Board SE7525GP2/SE7320SP2 User Guide, and your server chassis documentation for additional connection information.

8 Install the Serial B Cable [optional]

For the Intel® Server Chassis SC5275-E, you can connect the Serial B cable to the rear of the chassis. For the Intel® Server Chassis SC5300, you can connect the Serial B cable to either the front or the rear of the chassis. See the Connections and Reference sections of this document for server board serial B header location.



1. Use a screwdriver to remove the connector knockout.
2. Install the Serial B cable by inserting it into the chassis back panel cutout and attaching the two hex screws as shown.
3. Attach the other end to the Serial B connector on the server board. See Reference section below for the connector location.

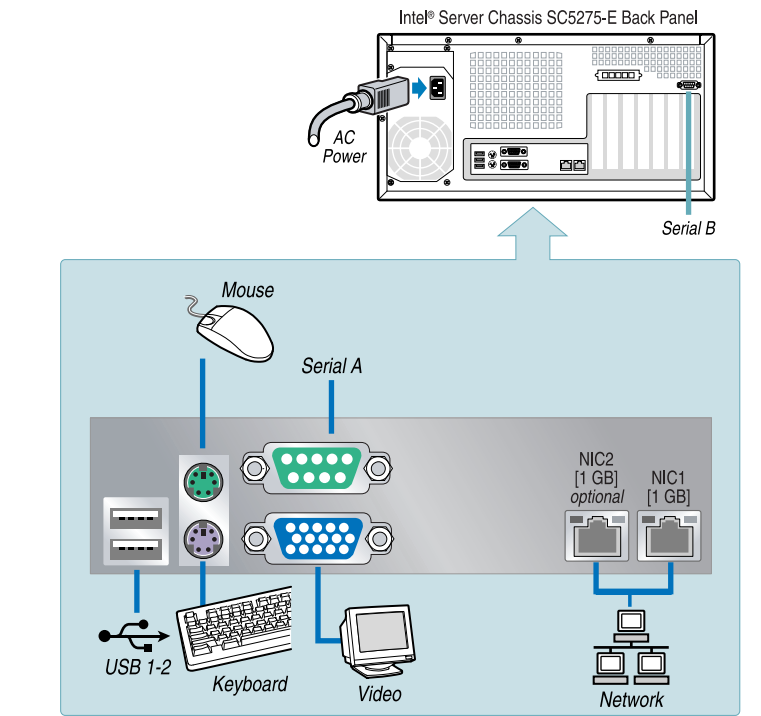


9 Finishing Up the Hardware

A. Configuration Label
Attach the configuration label to the inside cover of your chassis.

B. Back Panel Connections
Before installing your operating system, you must finish your chassis installation, make I/O connections and plug in AC power.

1. Replace the chassis cover.
2. Connect your keyboard, mouse, video, and other I/O cables as shown.
3. Connect the AC power cable last.



10 Drivers, Firmware, and Software

A. Confirm BIOS and FRU/SDR Versions

Look on the Server/System Management screen in the BIOS Setup Utility to determine the installed BIOS and FRU/SDR versions. Compare these to the versions at <http://support.intel.com/support/motherboards/server/se7525gp2/> and <http://support.intel.com/support/motherboards/server/se7320sp2/>. If new versions are available, update the BIOS and FRU/SDR on your server. See the User Guide on the Intel Server Deployment Toolkit CD for update instructions.

B. Configure your Server with the Server Configuration Wizard

Boot to the Server Board SE7320SP2/SP7525GP2 Intel Server Deployment Toolkit CD. Select the Server Configuration Wizard to configure your server for remote server management. Unless you have downloaded a newer version of the FRU/SDR from the Web, use the Server Configuration Wizard also to load the FRU/SDR.

C. Configure your RAID Controller

Use the instructions provided with the RAID controller.

D. Install your Operating System

Use the instructions provided with the RAID controller and with the operating system.

E. Install Operating System Drivers

With the operating system running, insert the Intel Server Deployment Toolkit CD. If using a Windows operating system, the Express Installer will autorun and allow you to select the appropriate drivers to install. On other operating systems, browse the CD folders to locate and install the driver files.

F. Install Intel Server Management 8 (optional)

With the operating system running, insert the Intel Server Management 8 CD that came with your server board. On a Windows operating system, the Setup program will auto-run. Follow the on-screen instructions. For installation details, see *Getting Started with Intel Server Manager 8*, located on the ISM CD.

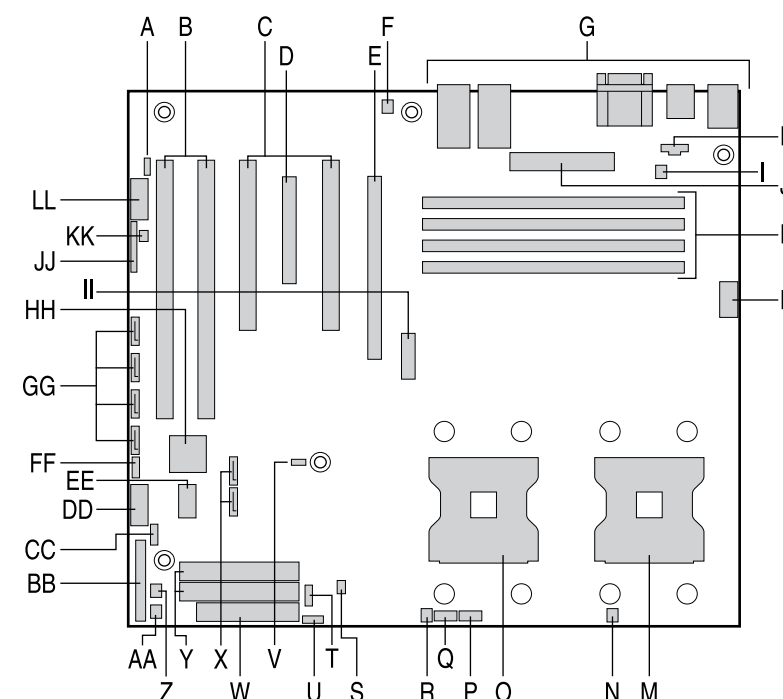
G. Install Intel SMaRT Tool (optional)

With the operating system running, insert the Intel Server Deployment Toolkit CD. The Express Installer will autorun. Click Intel SMaRT Tool at the left side of the screen. Follow the on-screen instructions. For information about Intel SMaRT Tool, see <http://developer.intel.com/design/servers/smartool/index.htm>.

Reference

Server Board Component Layout

- | | |
|--|--|
| A: SCSI LED Connector | T: Hot Swap Backplane Header |
| B: PCI-X Slot 1, 64/66 RADIOS; PCI-X Slot 2, 64/66 | U: IPMB Connector |
| C: PCI Slots 3 and 5, 32/33 | V: BIOS Select Jumper |
| D: x4 PCI-Express Slot 4 | W: Floppy Drive Connector |
| E: x16 PCI-Express Slot 6; *Note: only available on SE7525GP2 server board | X: SATA A1, A2 Connectors |
| F: System Fan Header 2 | Y: Primary and Secondary IDE Connectors |
| G: Rear I/O (see Step 9 for details) | Z: System Fan Header 3 |
| H: Auxiliary Power Connector | AA: System Fan Header 4 |
| I: System Fan Header 1 | BB: Front Panel Connector |
| J: Main Power Connector | CC: SATA Backplane Header |
| K: DIMM Sockets (labeled from the top: 1B, 1A, 2B, 2A) | DD: Front Panel USB Header |
| L: +12V CPU Power Connector | EE: OEM Remote Management Card Connector |
| M: Processor Socket 1 | FF: LCD Header |
| N: Processor 1 Fan Header | GG: SATA B1, B2, B3, B4 Connectors; *Note: only available on SE7320SP2 LX server board |
| O: Processor Socket 2 | HH: 4-Port SATA Controller; *Note: only available on SE7320SP2 LX server board |
| P: System Fan Header 6 | II: Battery |
| Q: System Fan Header 5 | JJ: Jumper Block |
| R: Processor 2 Fan Header | KK: Chassis Intrusion Header |
| S: IDE Power Connector | LL: Serial B Header |



Common Problems and Solutions

For a list of hardware components that have been tested with this system, see: <http://support.intel.com/support/motherboards/server/se7525gp2/> and <http://support.intel.com/support/motherboards/server/se7320sp2/>

The system does not boot or show video at power-on.

- Check that +12V CPU power connector is plugged in. Without this cable the processors will not have any power.
- If configuring with only one processor verify that the processor is in the Primary Processor socket (CPU 1).
- Remove and replace DIMMs one bank at a time to isolate which one is causing problems. Remember, all DIMMs must be:
 - Registered DDR266 compliant.
 - The same speed.
 - From the same manufacturer.
 - Installed beginning with DIMM 1B.
 - Installed with no empty sockets in between filled sockets.
- Your power supply must provide a minimum of 600W with 2A standby current, which complies with the SSI EPS 12V specification.

The system sometimes works, but is exhibiting erratic behavior.

- This is typically the result of using an under-rated power supply. Make sure you are using at least a 600W power supply.

Accessories and Order Codes	
Intel® Server Chassis SC5300 Base	SC5300Base
Intel® Server Chassis SC5275-E	SC5275E
Intel® Server Chassis SC5300 Rack Conversion Kit	ARRGRACK
Intel® Server Chassis SC5300 Hot-Swap SCSI Drive Bay Upgrade Kit [six drive bay]	AXX6SCSIDB
Intel® Server Chassis SC5300 Hot-Swap SCSI Drive Bay Upgrade Kit [four drive bay]	AXX4SCSIDB
Intel® Server Chassis SC5300 Hot-Swap SATA Drive Bay Upgrade Kit	AXX6SATADB
Intel® RAID Controller SRCU42L	SRCU42L
Intel® RAID Controller SRCU16	SRCU16

A complete list of accessories and spares can be found at: www.intel.com/go/serverbuilder