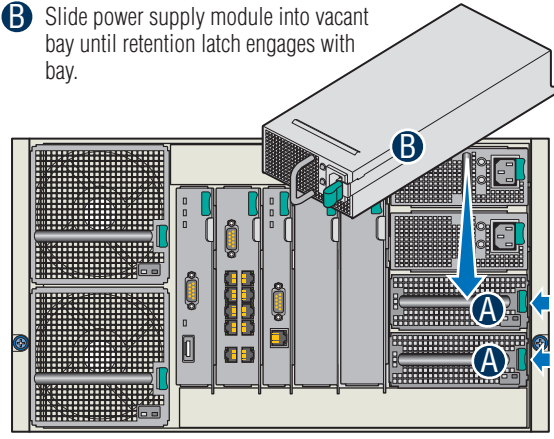


5 Install Additional Power Supplies (Optional)

- A Press retention latch to left to release filler module. Remove filler module from module bay.
- B Slide power supply module into vacant bay until retention latch engages with bay.



One power supply supports one compute module plus all other modules.

Two power supplies support 2-3 compute modules (in any slot) plus all other modules.

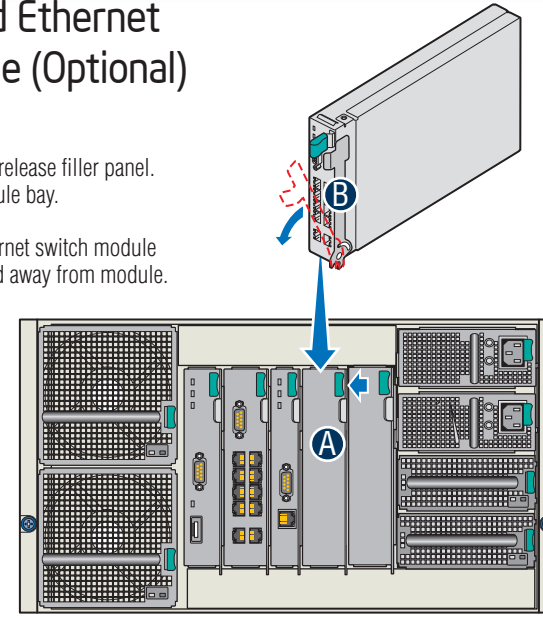
Three power supplies support 4-6 compute modules (in any slot) plus all other modules.

Additional power supplies above minimum required (based on configuration) provide redundancy.

Maximum System Loading for N+1 Redundant Power Support		
Two Power Supplies	Three Power Supplies	Four Power Supplies
Two Power Supply Module Filler Panels (PS 3, 4)	One Power Supply Module Filler Panel (PS 4)	
One Compute Module	Up to Three Compute Modules	Up to Six Compute Modules
One Management Module		
Two Ethernet Switch Modules		
Two Storage Controllers		
Fourteen 2.5-Inch Drives or Six 3.5-Inch Drives		
Two Main Cooling Modules		
One I/O Cooling Module		

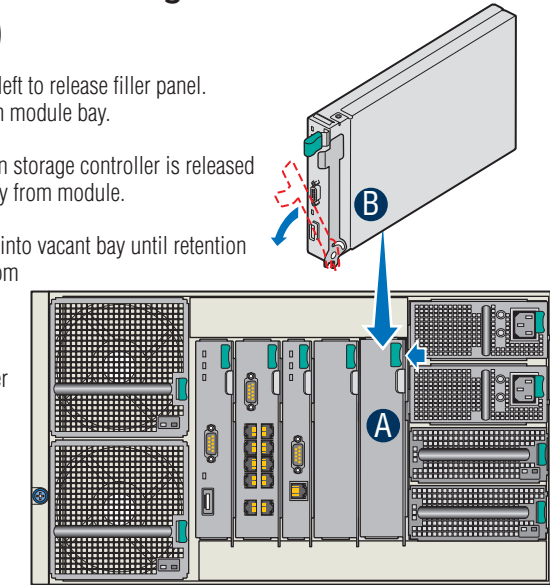
6 Install Second Ethernet Switch Module (Optional)

- A Press retention latch to left to release filler panel. Remove filler panel from module bay.
- B Ensure retention lever on Ethernet switch module is released and rotated out and away from module.
- C Slide Ethernet switch module into vacant bay until retention lever engages with bottom of bay.
- D Rotate retention lever in toward Ethernet switch module until it latches.



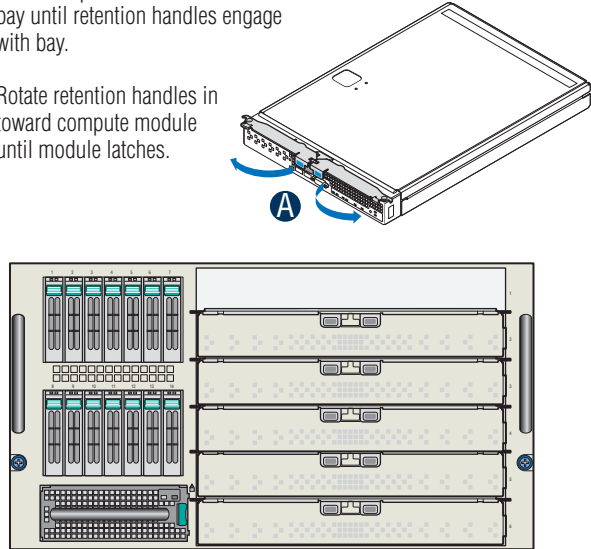
7 Install Second Storage Controller (Optional)

- A Press retention latch to left to release filler panel. Remove filler panel from module bay.
- B Ensure retention lever on storage controller is released and rotated out and away from module.
- C Slide storage controller into vacant bay until retention lever engages with bottom of bay.
- D Rotate retention lever in toward storage controller until it latches.



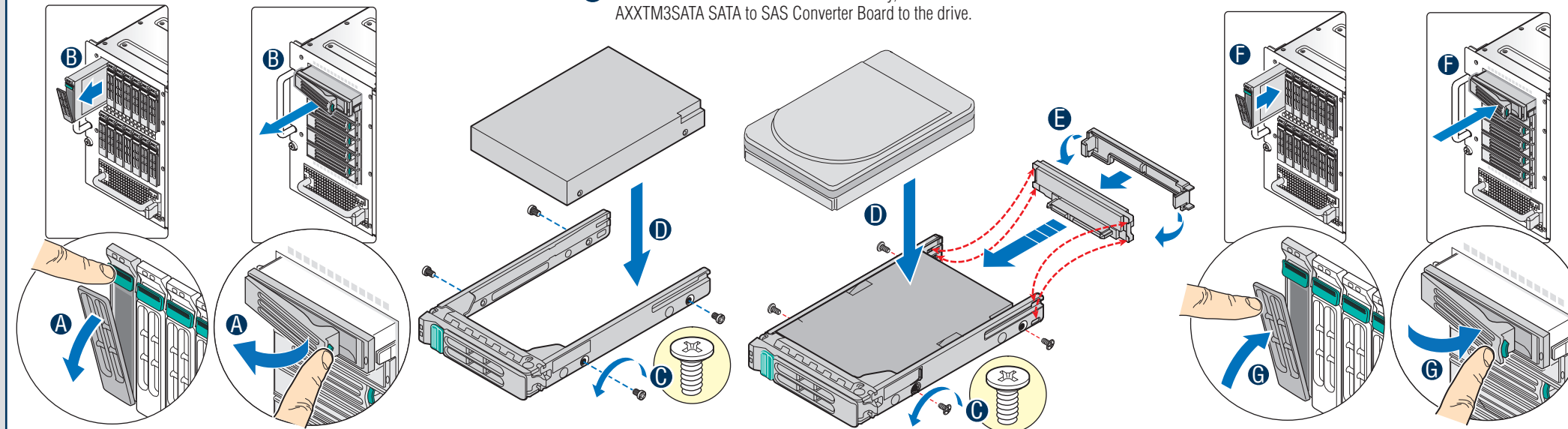
8 Install Compute Module(s)

- A Ensure release handles are in the open position, out and away from module.
- B If necessary, remove filler module.
- C Slide compute module into vacant bay until retention handles engage with bay.
- D Rotate retention handles in toward compute module until module latches.



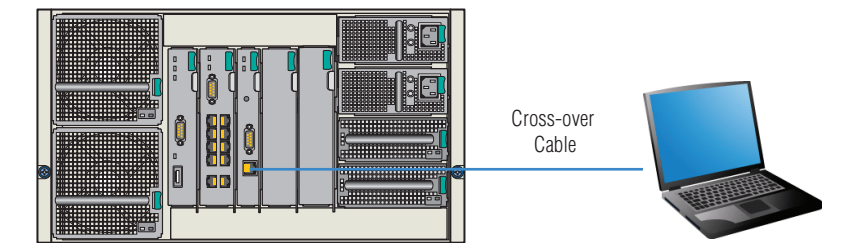
9 Install Hot Swap Hard Drives (Optional)

- A Release hot-swap hard drive carrier by pressing retaining lever to open.
- B Slide carrier out of bay.
- C With a Phillips* screwdriver, remove four screws securing the filler panel to carrier and remove the filler panel.
- D Attach hard drive to carrier, using the four screws removed in step C.
- E For 2.5-Inch SSD and SATA hard drives only, attach the AXXTM3SATA SATA to SAS Converter Board to the drive.
- F Ensure carrier retaining lever is in open position. Slide carrier into drive bay until carrier is fully seated and retaining lever engages.
- G Press retaining lever to ensure it is fully latched.

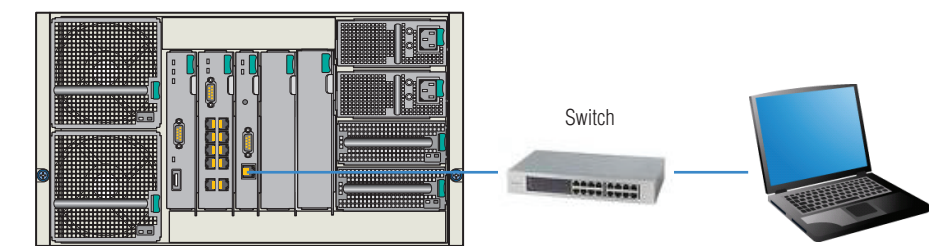


10 Connect Client System for Management

Option 1: Connect client system directly to Intel® Management Module using a cross-over cable.



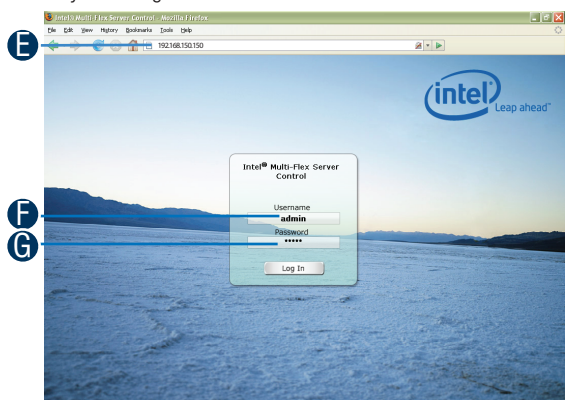
Option 2: Connect client system and Intel® Management Module to an external switch using two Ethernet cables.



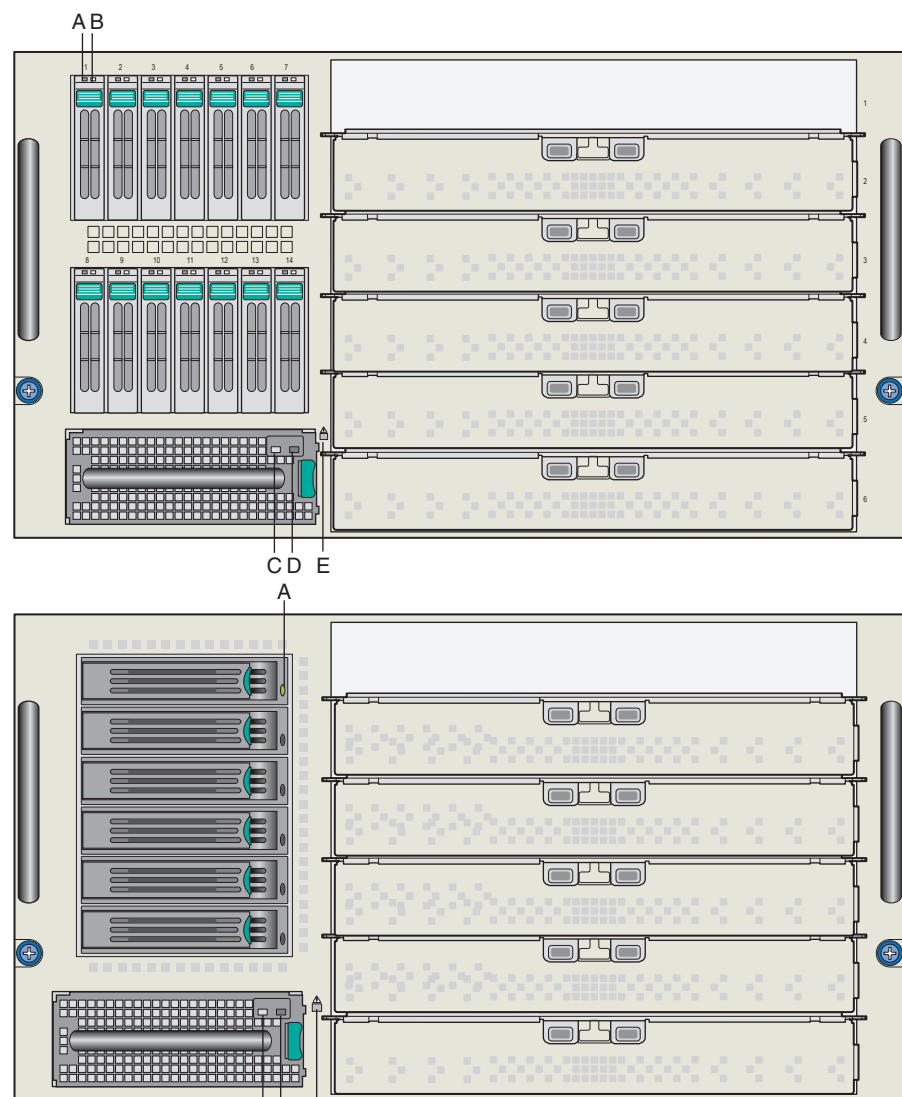
Minimum System Requirements for Remote Web Console	
Requirement	Remote Web Consoles/Clients
Operating System	Any operating system that supports either the Microsoft® Internet Explorer or Mozilla® Firefox web browser.
Web Browser	Microsoft® Internet Explorer 6 or 7 Mozilla® Firefox, version 2.0 or later
Browser Plug-ins	Adobe® Flash Player, version 9, plug-in Java® SE Runtime Environment 6, Update 1
TCP/IP Network Stack	Yes

11 Finish Up

- A Connect power cord(s) to power supply modules. Plug power cord(s) into power source, which will power on the chassis.
- B Compute modules can be powered on directly via their front panel power button, or remotely using the management module.
- C Ensure power supply module LEDs are green. Green indicates power is on.
- D Open a browser session on the remote client system. Log into the Intel® Modular Server Control.
- E Enter the Intel® Management Module default static IP address of 192.168.150.150 in the address bar of the browser.
- F Enter default username (admin).
- G Enter default password (admin).
- H See Chapter 4 in the Intel® Modular Server System MFSYS25/MFSYS35 User Guide on the Resource CD for complete details on how to use the Intel® Modular Server Control user interface.

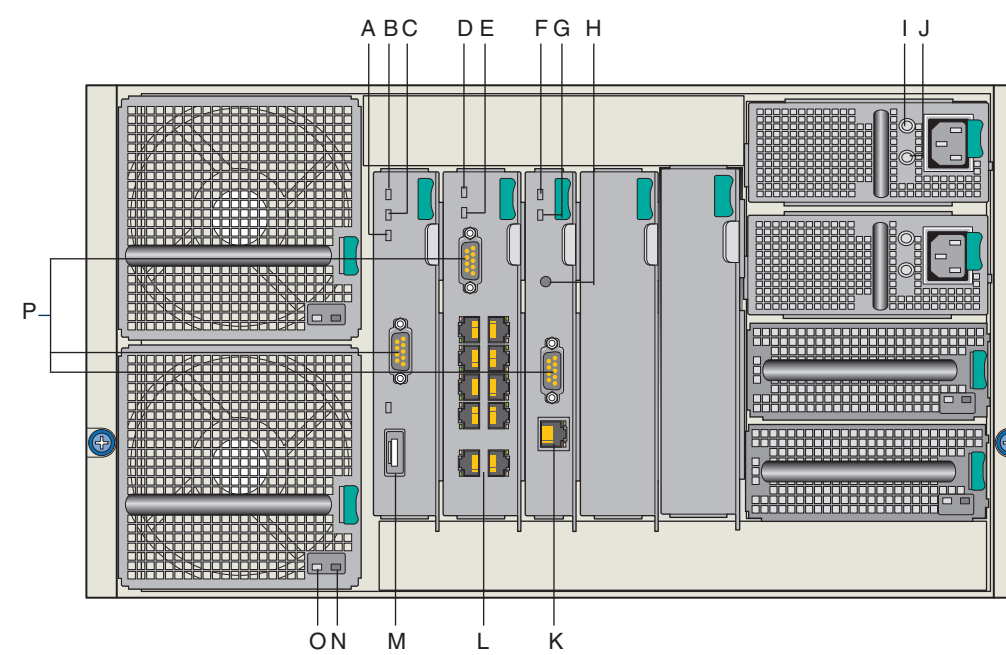


Front Chassis Connectors and Indicators



- A. Hard Drive Power/Activity LED (Green)
- B. Hard Drive Fault LED (Amber)
- C. I/O Cooling Module Power LED (Green)
- D. I/O Cooling Module Fault LED (Amber)
- E. System Fault LED (Amber)

Back Chassis Connectors and Indicators



- A. Storage Controller Dirty Cache LED (Green)
- B. Storage Controller Fault LED (Amber)
- C. Storage Controller Power LED (Green)
- D. Ethernet Switch Module Power LED (Green)
- E. Ethernet Switch Module Fault LED (Amber)
- F. Management Module Power LED (Green)
- G. Management Module Fault LED (Amber)
- H. Management Module Reset Switch
- I. Power Supply Module Power LED (Green)
- J. Power Supply Module Fault LED (Amber)
- K. Management Module NIC Connector with LED
- L. Ethernet Switch Module 1-Gb Ethernet Connectors (10) with LEDs
- M. Storage Controller External SAS Connector
- N. Main Cooling Module Fault LED (Amber)
- O. Main Cooling Module Power LED (Green)
- P. Serial Cable Connectors (Manufacturing Only)

