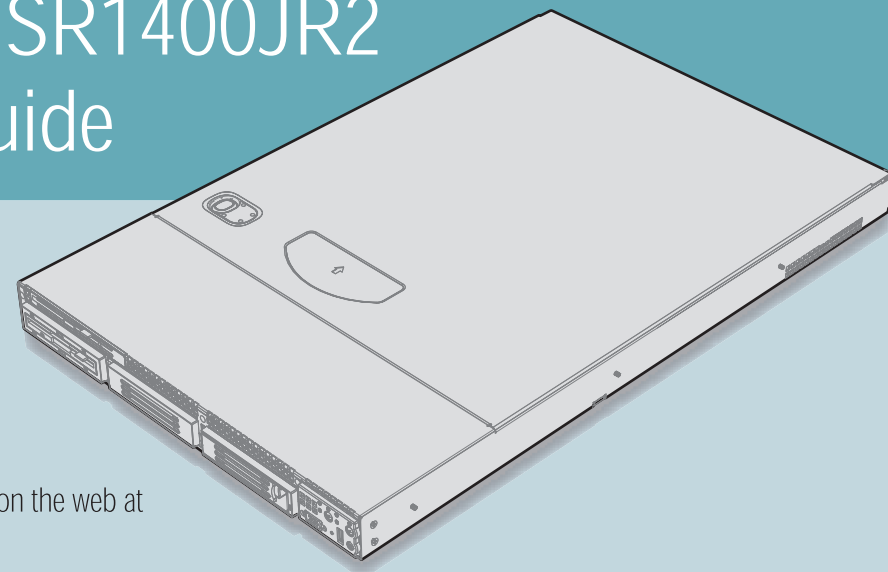




Intel® Server System SR1400JR2 Quick Start User's Guide



Thank you for buying an Intel® Server System. The following information will help you assemble your Intel® Server System and install components.

This guide and other supporting documents are located on the web at <http://support.intel.com/support/motherboards/server>

If you are not familiar with ESD (Electrostatic Discharge) procedures used during system integration, please see the Intel® Server Board SE7520JR2 User Guide at <http://support.intel.com/support/motherboards/server>

Warning



Read all caution and safety statements in this document before performing any of the instructions. Also see the *Intel® Server Board and Server Chassis Safety Information* document at: <http://support.intel.com/support/motherboards/server/sb/cs-010770.htm> for complete safety information.

Warning



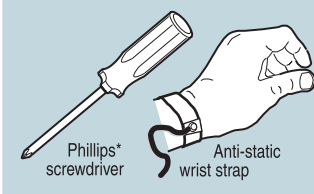
Installation and service of this product to be performed only by qualified service personnel to avoid risk of injury from electrical shock or energy hazard.

Caution

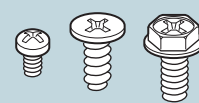


Observe normal ESD (Electrostatic Discharge) procedures during system integration to avoid possible damage to server board and/or other components.

Tools Required



Fastener Identification Guide



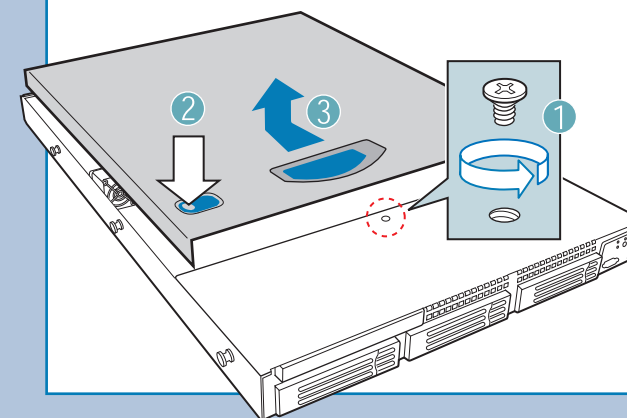
Minimum Hardware Requirements

To avoid integration difficulties, make sure your system meets the minimum requirements below:

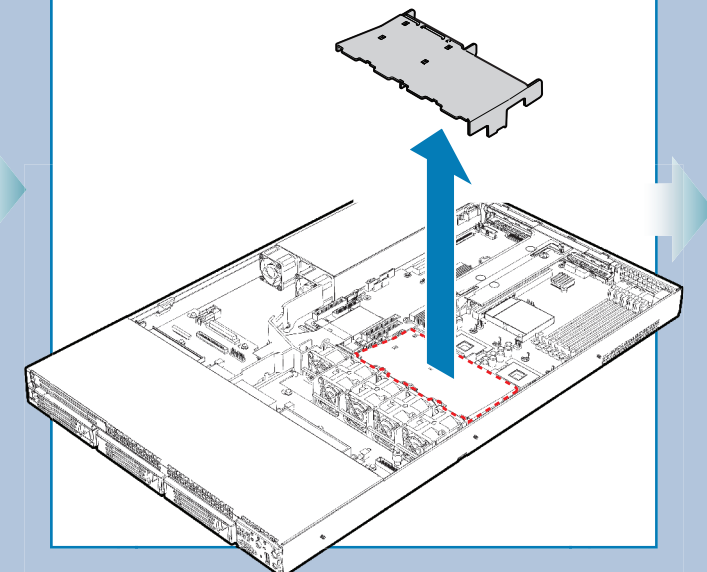
- Processor: Minimum of one Intel® Xeon™ processor at least 2.8 GHz with an 800 MHz FSB with 1U heat sink.
- Memory: Minimum of one 256 MB, DDR266/DDR333 compliant unbuffered, ECC or non-ECC, SPD SDRAM 184-pin DIMM.

1 Remove the Top Cover

- 1 Remove the shipping screw.
- 2 Depress the latch.
- 3 Slide the top cover toward the rear and lift upward.



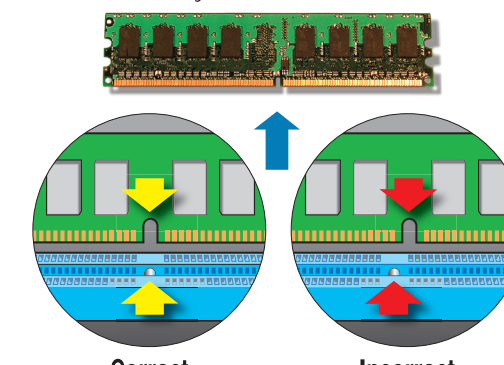
2 Remove Processor Air Duct



3 Install Memory

Warning: This server board does not support DDR2 memory. You must install DDR DIMMs to avoid possible damage to server board DIMM sockets.

Memory DIMM Identification

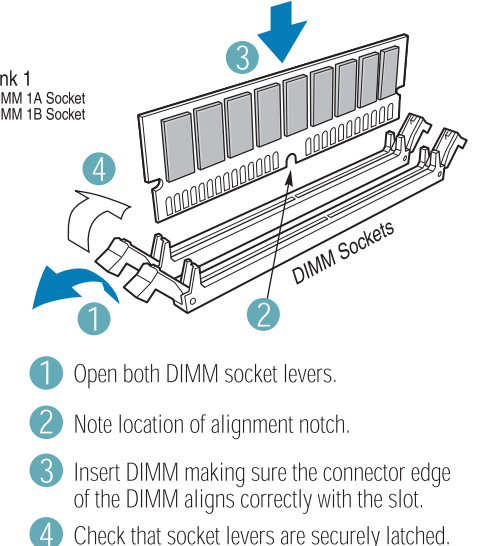
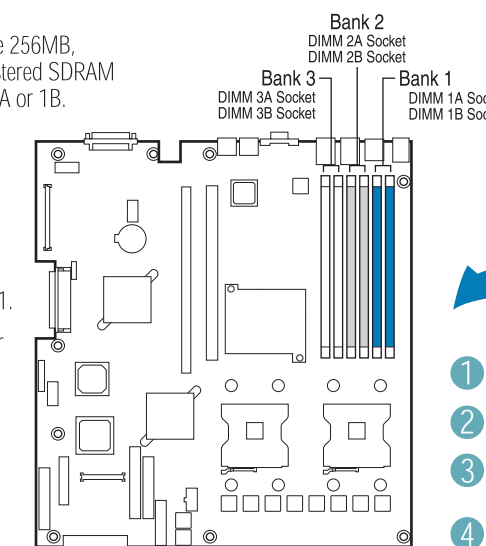


These illustrations show the correct and incorrect alignment between the DDR DIMM notch and the server board DIMM Socket. DDR and DDR2 DIMMs align differently. DDR2 DIMMs will not fit into the DIMM socket without damaging the DIMM and/or the DIMM socket.

Memory Type: Minimum of one 256MB, DDR266/DDR333 compliant registered SDRAM 184-pin DIMM in DIMM socket 1A or 1B.

Notes and Cautions: Bank 1 (DIMM1A and DIMM1B) must be fully populated before populating Bank 2 (DIMM2A and DIMM2B). Memory must be populated in pairs except when a single DIMM is installed in Bank 1. The DIMM size, speed and vendor must be the same within a bank. However, the DIMM size can vary between banks. For example, Bank 1 can use two 256 MB DIMMs and Bank 2 can use two 512 MB DIMMs.

Note: For additional memory configurations, see the User Guide for the Server Board SE7520JR2.

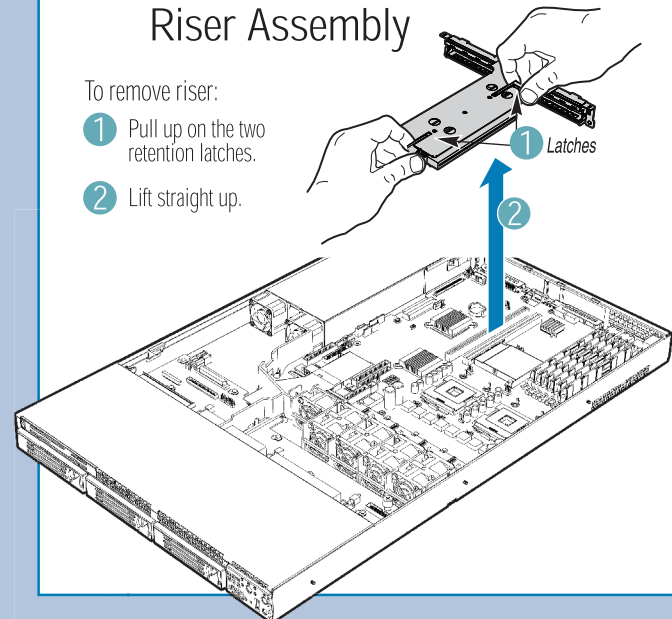


- 1 Open both DIMM socket levers.
- 2 Note location of alignment notch.
- 3 Insert DIMM making sure the connector edge of the DIMM aligns correctly with the slot.
- 4 Check that socket levers are securely latched.

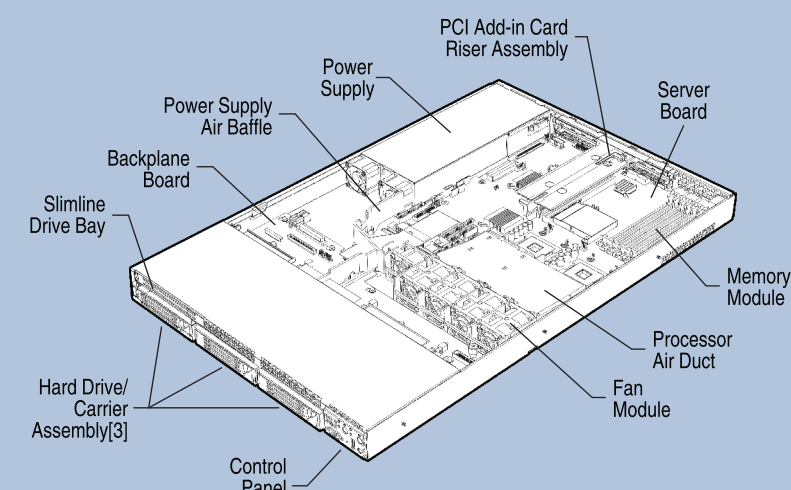
Warning: Avoid touching gold contacts when handling or installing DIMMs.

4 Remove Add-in Card Riser Assembly

- To remove riser:
- 1 Pull up on the two retention latches.
 - 2 Lift straight up.



Major Server System Components



5 Install the Processor[s] and Heat Sink[s]

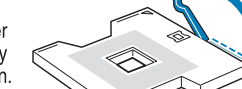
Notes and Cautions



1. If only ONE processor is to be used, it must be installed in the Processor Socket 1 (CPU1), closest to the edge of the server board.
2. Do not mix processors of different types or frequencies.
3. When unpacking a processor, hold by the edges only to avoid touching the pins.
4. This server board has "zero-insertion force" sockets. If processor does not drop easily into socket holes, make sure lever is in the full-open position and verify none of the processor pins is bent.
5. The heat sink has thermal interface material on the underside of it. Use caution so that you do not damage the thermal interface material.

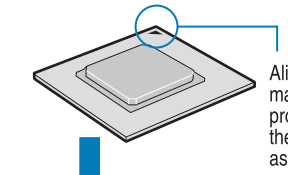
A. Open the Socket Lever

Open the lever all the way as shown.

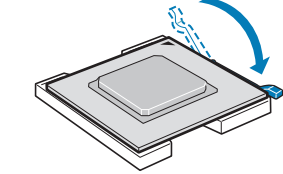


B. Install the Processor

Align corner mark on the processor to the socket as shown.



C. Close the Socket Lever

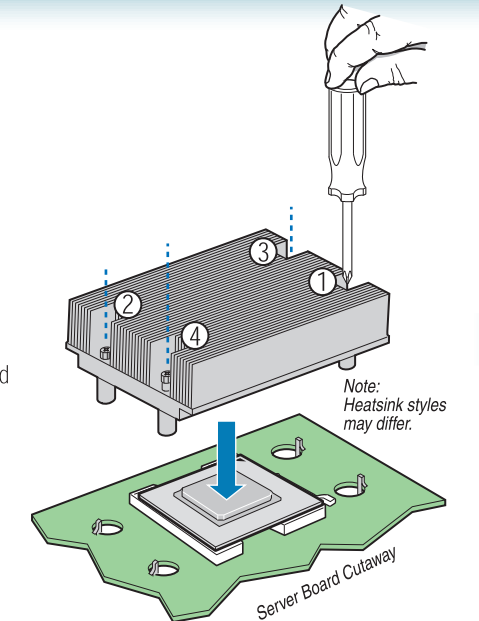


D. Install the Heat Sink(s)

Each heat sink has four captive fasteners and should be tightened using the following procedure:

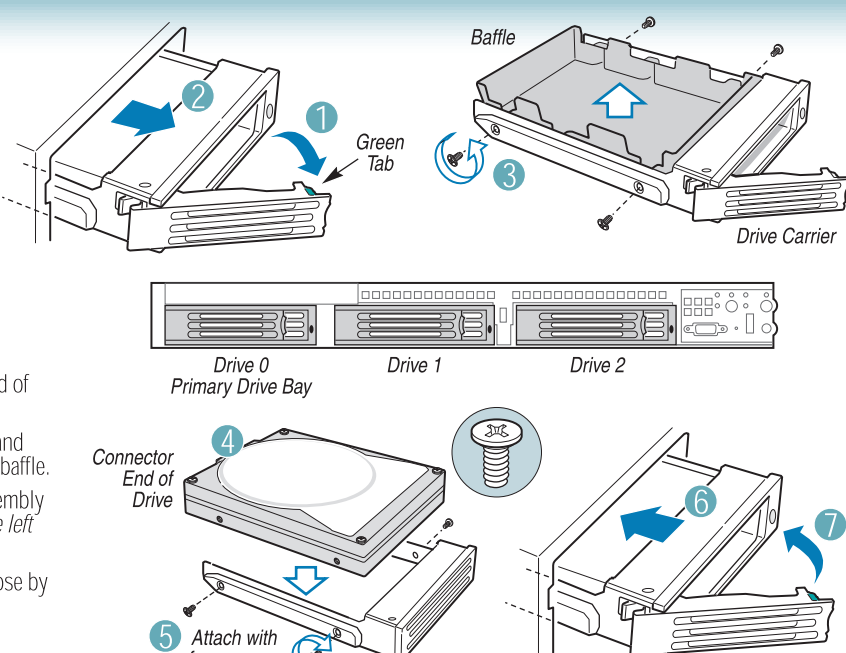
- D1. Finger-tighten each fastener diagonally, according to the numbers shown.
- D2. Securely re-tighten each fastener again in the same order as performed in step D1.

CAUTION: Do not over-tighten fasteners.



6 Install SCSI Hard Drives

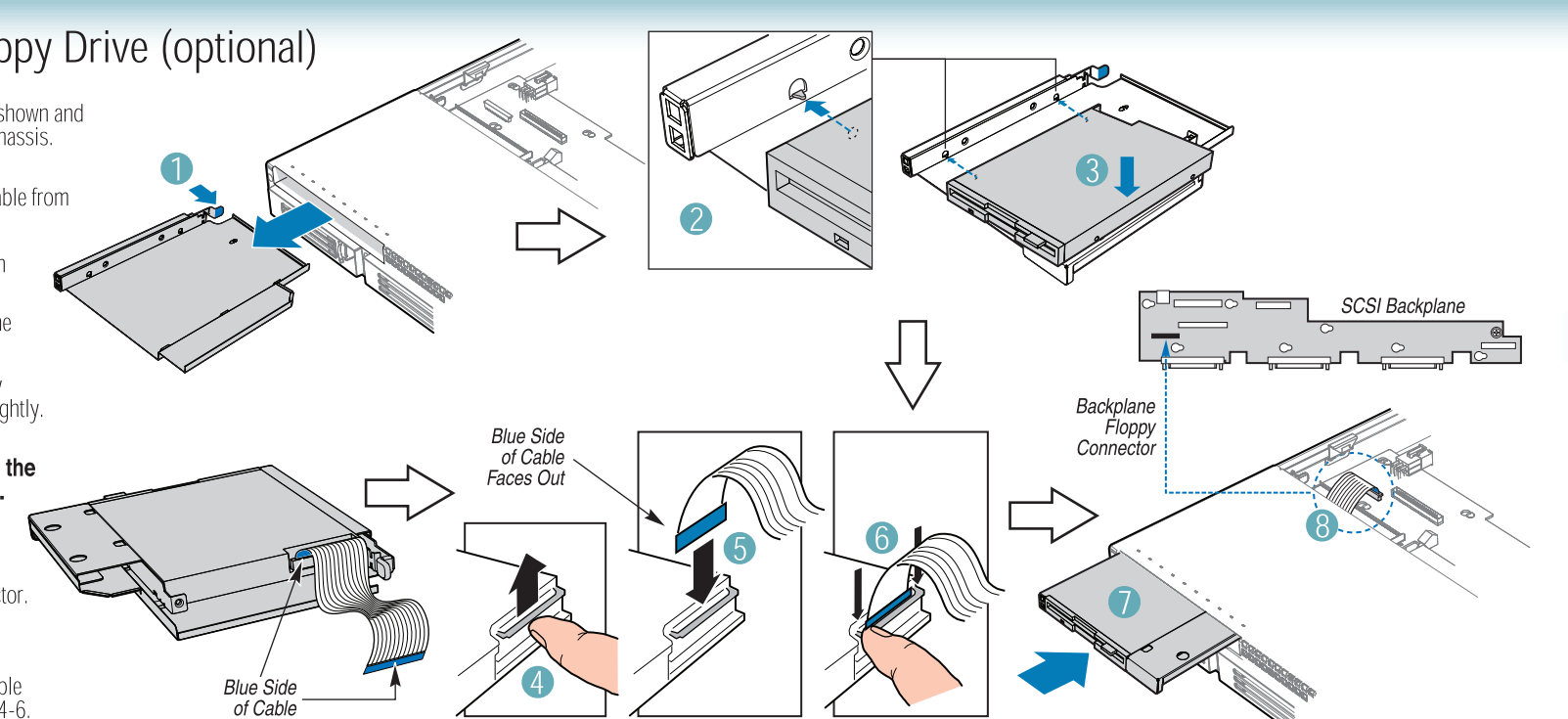
- 1 Release the hard drive carrier from the chassis by pressing the green tab and opening the lever.
- 2 Slide the carrier out of the chassis.
- 3 Remove the four screws attaching the plastic drive baffle to the drive carrier. Store the baffle for future use. Remove the hard drive from its wrapper and place it on an antistatic surface. Set any jumpers and/or switches on the drive according to the drive manufacturer's instructions.
- 4 With the drive circuit-side down, position the connector-end of the drive so that it faces the rear of the drive carrier.
- 5 Align the holes in the drive to the holes in the drive carrier and attach it to the carrier with the screws from the plastic drive baffle.
- 6 With the lever in the fully open position, slide the drive assembly into the chassis. Note that the primary drive inserts into the left drive bay (Drive 0).
- 7 Push the carrier into the chassis until the lever begins to close by itself, then close the lever until it clicks into place. Repeat steps 1-7 for any additional hard drives.



Warning: Note: Any drive carriers removed from the chassis that do not have hard drives installed in them must be reinstalled to ensure proper cooling.

7 Install Slimline Floppy Drive (optional)

- 1 Push the blue release tab in the direction shown and remove the DVD/CD-ROM tray from the chassis. Store it for future use. Remove the floppy drive tray and floppy flex cable from the accessory box.
- 2 Align the two holes in the floppy drive with the two cutouts in the floppy drive tray.
- 3 Lower opposite side of floppy drive into the tray until it clicks into place.
- 4 With the tip of your finger, slide the floppy connector cover up from the connector slightly.
- 5 Insert cable end into connector to engage. Note orientation of the BLUE side of the floppy cable end during installation. Make sure cable end inserts into connector uniformly.
- 6 Push connector cover down onto connector until it seats against the connector.
- 7 Install floppy drive into slimline drive bay until it clicks into place.
- 8 Connect the opposite end of the floppy cable to the SCSI backplane by repeating steps 4-6.



C78601-001

