



Intel[®] Server Continuity Suite

Version 1.2

Installation Guide

G53455-001

Legal Statement

INFORMATION IN THIS DOCUMENT IS PROVIDED IN CONNECTION WITH INTEL® PRODUCTS FOR THE PURPOSE OF SUPPORTING INTEL DEVELOPED SERVER BOARDS AND SYSTEMS. NO LICENSE, EXPRESS OR IMPLIED, BY ESTOPPEL OR OTHERWISE, TO ANY INTELLECTUAL PROPERTY RIGHTS IS GRANTED BY THIS DOCUMENT. EXCEPT AS PROVIDED IN INTEL'S TERMS AND CONDITIONS OF SALE FOR SUCH PRODUCTS, INTEL ASSUMES NO LIABILITY WHATSOEVER, AND INTEL DISCLAIMS ANY EXPRESS OR IMPLIED WARRANTY, RELATING TO SALE AND/OR USE OF INTEL PRODUCTS INCLUDING LIABILITY OR WARRANTIES RELATING TO FITNESS FOR A PARTICULAR PURPOSE, MERCHANTABILITY, OR INFRINGEMENT OF ANY PATENT, COPYRIGHT OR OTHER INTELLECTUAL PROPERTY RIGHT.

UNLESS OTHERWISE AGREED IN WRITING BY INTEL, THE INTEL PRODUCTS ARE NOT DESIGNED NOR INTENDED FOR ANY APPLICATION IN WHICH THE FAILURE OF THE INTEL PRODUCT COULD CREATE A SITUATION WHERE PERSONAL INJURY OR DEATH MAY OCCUR.

Intel may make changes to specifications and product descriptions at any time, without notice.

Designers must not rely on the absence or characteristics of any features or instructions marked "reserved" or "undefined." Intel reserves these for future definition and shall have no responsibility whatsoever for conflicts or incompatibilities arising from future changes to them.

This manual may contain design defects or errors known as errata, which may cause the product to deviate from published specifications. Current characterized errata are available on request.

This manual as well as the software described in it, is furnished under license and may only be used or copied in accordance with the terms of the license. The information in this document is furnished for informational use only, is subject to change without notice, and should not be construed as a commitment by Intel Corporation. Intel Corporation assumes no responsibility or liability for any errors or inaccuracies that may appear in this document or any software that may be provided in association with this document.

Except as permitted by such license, no part of this document may be reproduced, stored in a retrieval system, or transmitted in any form or by any means without the express written consent of Intel Corporation.

Contact your local Intel sales office or your distributor to obtain the latest specifications and before placing your product order.

Intel and the Intel logo are registered trademarks of Intel Corporation or its subsidiaries in the United States and other countries.

*Other names and brands may be claimed as the property of others.

Copyright © 2012 Intel Corporation. All rights reserved.

Revision History

| Revision Number | Date | Modifications |
|-----------------|---------------|------------------|
| 001 | January, 2012 | Initial release. |
| 002 | April, 2012 | Version 1.1 |
| 003 | May, 2012 | Version 1.2 |

Preface

About this Document

This document provides information required to install and uninstall the Intel® Server Continuity Suite. This document also provides support and documentation information available in the installer.

Intended Audience

This guide is intended for system administrators who are responsible for installing Intel® Server Continuity Suite on servers built using Intel® server boards. For the list of supported server boards, see [Supported Server Boards](#).

Document Conventions

| Convention | Description | Example |
|--------------|--|--|
| Bold | UI terms and buttons appear in bold in procedures. | Click Continue . |
| Note: | Notes appear with the prefix Note: | Note: The application can also be downloaded from the Intel® website. |

Table of Contents

| | | |
|----------|---|-----------|
| 1 | Introduction to Intel® Server Continuity Suite | 1 |
| 1.1 | Overview of Intel® Server Continuity Suite | 1 |
| 1.2 | Preparing for Installation..... | 2 |
| 1.3 | License Information..... | 3 |
| 2 | Installation Prerequisites..... | 5 |
| 2.1 | Supported Server Boards | 5 |
| 2.2 | Supported Server Systems | 5 |
| 2.3 | System Requirements..... | 7 |
| 2.4 | Software Requirements..... | 7 |
| 2.5 | Supported Browsers | 8 |
| 2.6 | Supported RAID Controllers and Hard Disk Drives..... | 8 |
| 2.7 | Supported USB Drives | 9 |
| 3 | Installing Intel® Server Continuity Suite | 10 |
| 4 | Starting Intel® Server Continuity Suite | 14 |
| 5 | Uninstalling Intel® Server Continuity Suite | 15 |
| 6 | Contacting Support | 16 |
| 7 | Documentation..... | 17 |

1 Introduction to Intel® Server Continuity Suite

1.1 Overview of Intel® Server Continuity Suite

Intel® Server Continuity Suite (Intel® SCS) is a business continuity suite that enables you to monitor servers built on Intel® server boards and take necessary actions to ensure the business is not disrupted. You can take a backup of your business critical data on a storage volume and restore the data if the server hard disk drive fails. Intel® SCS has an engaging graphical user interface that enables you to perform these tasks with the click of a few buttons.

Intel® SCS has the following modules:

- Hardware Management
- Storage Management
- Data Protection

Intel® SCS creates a log of changes in the server's performance and saves them as events. These are displayed on the screen of the console. System administrators can also configure Intel® SCS to send periodic notifications about actions and events through emails. The administrator can then take actions based on the notifications.

1.1.1 Hardware Management Module

The Hardware Management module provides a real time pictorial view of the server board and the server components and provides the tools to monitor the health of the components.

The module enables you to view:

- Information about health of various hardware components such as processors, memory, power supply, and system fans
- Information about health of logical drives
- Events and actions related to hardware components
- Sensor information related to temperature, fan speed, voltage, and current

1.1.2 Storage Management Module

The Storage Management module enables you to allocate storage by configuring RAID levels on the hard disks in the server to facilitate efficient data recovery.

The module enables you to:

- View specifications and health of storage components
- View events and actions related to storage
- Create virtual disks in RAID arrays using RAID controllers
- Perform consistency check on RAID arrays
- Run patrol read using RAID controllers
- Add, locate, initialize, or delete virtual disks in RAID arrays

1.1.3 Data Protection Module

The Data Protection module helps you schedule periodic backup of the data to increase data security and facilitate quick data recovery on demand. The data backup is done incrementally, enabling you to save on infrastructure and maintenance costs considerably.

The module enables you to:

- Schedule periodic backup of the data
- Create a repository for data backup and consistency points
- View the protection status of storage volumes
- Perform actions such as start or pause protection, modify protection plan, or unprotect storage volumes
- View events and actions related to data protection

1.2 Preparing for Installation

Intel® SCS is easy to install and use. If software components required on the server for Intel® SCS to work are not available on the server, they are installed by the Intel® SCS installer. For the list of installation prerequisites, see [Installation Prerequisites](#).

Intel® SCS is designed for one or a series of servers built on Intel® server boards. You can install Intel® SCS only on servers built on supported Intel® server boards. For the list of supported server boards, see [Supported Server Boards](#).

You can install Intel® SCS either using the installation disk provided or by downloading the installation package from the [Intel® download center](#). The installer contains:

- Prerequisite software
- Intel® Server Continuity Suite, version 1.2
- Intel® Recovery Wizard
- Intel® RAID Web Console 2
- Product documentation and support information

1.3 License Information

Intel® Server Continuity Suite (Intel® SCS) is installed with a 60 days trial license. Intel® SCS provides the capability to monitor the hardware and manage the storage of your server. Availability of the other features depends on the license.

The following are the license options for Intel® SCS:

| License Type | Data Backup Period | Data Recovery Window | Accelerated Protection Mode | Benefits |
|------------------------------------|--------------------|----------------------|-----------------------------|--|
| Intel® SCS System Manager | Not available | Not available | Not available | <ol style="list-style-type: none"> 1. Monitor your server health and manage storage. 2. Receive updates and fixes free of cost for one year*. <p>* Purchase Intel® SCS Software Maintenance license to receive updates and fixes for the second year and third year.</p> |
| Intel® SCS Data Protection Manager | 30 days | Eight hours | Not available | <ol style="list-style-type: none"> 1. Monitor your server health and manage storage. 2. Backup data and preserve it for up to 30 days. |

| License Type | Data Backup Period | Data Recovery Window | Accelerated Protection Mode | Benefits |
|---|--------------------|---|-----------------------------|--|
| | | | | 3. Roll back to data created before 8 hours or later. |
| Intel® SCS Advanced Data Protection Manager | 90 days | <ol style="list-style-type: none"> 1. Two hours if the server health is healthy 2. 30 minutes if the server health is warning 3. 15 minutes if the server health is critical | Available | <ol style="list-style-type: none"> 1. Monitor your server health and manage storage. 2. Backup data and preserve it for up to 90 days. 3. Roll back to data created before 15 minutes or later. |
| Intel® SCS Software Maintenance | Not applicable | Not applicable | Not applicable | Receive updates and fixes for the second year and third year. |

For more information on paid licenses, refer to the Licensing Information section in the Intel® Server Continuity Suite User Guide available at <http://support.intel.com/support/motherboards/server/scs/>.

2 Installation Prerequisites

2.1 Supported Server Boards

You can install Intel® Server Continuity Suite (Intel® SCS) only on servers built using the following Intel® server boards:

- Intel® Server Board S2600CP
- Intel® Server Board S2600GL
- Intel® Server Board S2600GZ
- Intel® Server Board S2600IP
- Intel® Server Board W2600CR
- Intel® Server Board S2600CO
- Intel® Server Board S5520HC
- Intel® Server Board S5520HCR
- Intel® Server Board S5520HCV
- Intel® Server Board S5500HCV
- Intel® Server Board S5500HCVR
- Intel® Server Board S5520HCT
- Intel® Server Board S5500HCT
- Intel® Server Board S5500BC
- Intel® Server Board S5500BCR
- Intel® Server Board 1200BTL*

* Intel® Server Board S1200BTS does not support Intel® SCS.

For more information on these server boards, see <http://www.intel.com/support/>.

2.2 Supported Server Systems

Intel® SCS supports Intel® server systems built on the following server boards:

- Intel® Server Board S2600CP
- Intel® Server Board S2600GL
- Intel® Server Board S2600GZ

- Intel® Server Board S2600IP
- Intel® Server Board W2600CR
- Intel® Server Board S2600CO
- Intel® Server Board S5520HC*
- Intel® Server Board S5520HCR*
- Intel® Server Board S5520HCV*
- Intel® Server Board S5500HCV*
- Intel® Server Board S5500HCVR*
- Intel® Server Board S5520HCT*
- Intel® Server Board S5500HCT*
- Intel® Server Board S5500BC*
- Intel® Server Board S5500BCR*
- Intel® Server Board 1200BTL*

* Along with the picture of the motherboard, the picture of the chassis or the closest chassis is also displayed.

For the following Intel® server systems, Intel® SCS also displays the picture of the chassis.

| Server Systems | Server Type | Server Board Model Number | Server Chassis Model Number |
|-------------------------|-------------|---------------------------|-----------------------------|
| SC5650HCBRPR | Pedestal | S5520HCR | SC5650BRP |
| SC5650HCBRP | Pedestal | S5520HCR | SC5650 |
| SC5650BCDPR | Pedestal | S5500BCR | SC5650DP |
| SR1630BCR (1U Fixed) | Rack | S5500BCR | SR1630 |
| P4304BTLSHCN | Pedestal | 1200BTL | P4304 |
| P4304BTLSFCN | Pedestal | 1200BTL | P4304 |

| Server Systems | Server Type | Server Board Model Number | Server Chassis Model Number |
|----------------|-------------|---------------------------|-----------------------------|
| R1304BTLSHBN | Rack | 1200BTL | R1304 |
| R1304BTLSFAN | Rack | 1200BTL | R1304 |

Intel® Server Board S1200BTS does not support Intel® SCS.

2.3 System Requirements

Note: The installation halts if the server does not meet these requirements.

The server must meet the following requirements to install Intel® SCS:

- Minimum Disk Space available: 2 GB
- Minimum Physical Memory available: 1024 MB
- Operating System: Microsoft Windows Server 2008* SP2—English, German, Spanish, Russian, French, and Italian or Microsoft Windows Server 2008* R2 SP1—English, German, Spanish, Russian, French, and Italian

Note: To install Intel® SCS, you must log in to the operating system as an administrator.

2.4 Software Requirements

The following software must be available on the server for Intel® SCS to work:

- Oracle* Java* Runtime Engine, version 6.31
- Microsoft Visual C++ 2005* Redistributable*, version 8.0.59193
- JRuby for Windows*, version 1.6.5.1
- PostgreSQL*, version 9.0 and above

Note: Intel® SCS will not function properly with multiple versions of PostgreSQL* installed.

Prior to installing Intel® SCS, the installer checks whether the prerequisite software are available on the server. If any software is not available on the server, the installer automatically installs and configures the software on the server. If a higher version of the software is available, Intel® SCS continues with the installation.

Note: If you try to install the application on an unsupported server, the installer will not allow you to continue.

2.5 Supported Browsers

Intel® SCS works on the following web browsers:

- Mozilla Firefox 4.0* or higher
- Microsoft Internet Explorer 8* and Microsoft Internet Explorer 9*
- Google Chrome* 15.0.874.106 m

We recommend that you set your screen resolution above 1024 x 768.

Note: The visual experience of Intel® SCS in Microsoft Internet Explorer 9* may be better than the visual experience of Intel® SCS in Microsoft Internet Explorer 8*.

Note: When starting Intel® SCS using a browser, if you get a message that there is a problem with the website's security certificate, click the appropriate button in the message to continue starting Intel® SCS using the browser.

Note: You must enable JavaScript* in your browser for all functionalities in Intel® SCS to work.

2.6 Supported RAID Controllers and Hard Disk Drives

You can find supported RAID adapters from the Server Configurator tool in <http://support.intel.com/support/motherboards/server/scs/sb/CS-032978.htm>.

Intel® SCS supports only Intel® RAID adapters and SAS/SATA drives mentioned in the Server Configurator tool.

Intel® SCS supports Onboard RAID controllers in the following server boards:

- Intel® Server Board S2600CP
- Intel® Server Board S2600GL
- Intel® Server Board S2600GZ
- Intel® Server Board S2600IP
- Intel® Server Board W2600CR
- Intel® Server Board S2600CO

2.7 Supported USB Drives

You can use USB drives for backing up the data using Intel® SCS. However, USB drives are not recommended for protecting critical data. The USB drives that work for a period of two months with medium data change rate (less than 5 MB per hour) are listed in <http://support.intel.com/support/motherboards/server/scs/sb/CS-032917.htm>.

3 Installing Intel® Server Continuity Suite

You can install Intel® Server Continuity Suite (Intel® SCS) using the installation disk provided or by downloading the installation package from the [Intel® download center](#).

Note: Before installing Intel® SCS, ensure that the time of the server is correct.

To install Intel® SCS on the server, follow the steps below:

- 1 If you are installing Intel® SCS using the installation disk provided, insert the installation disk. If you are installing Intel® SCS using the installer available at <http://www.intel.com>, click on the **Download** button.
- 2 The **Welcome** screen appears.

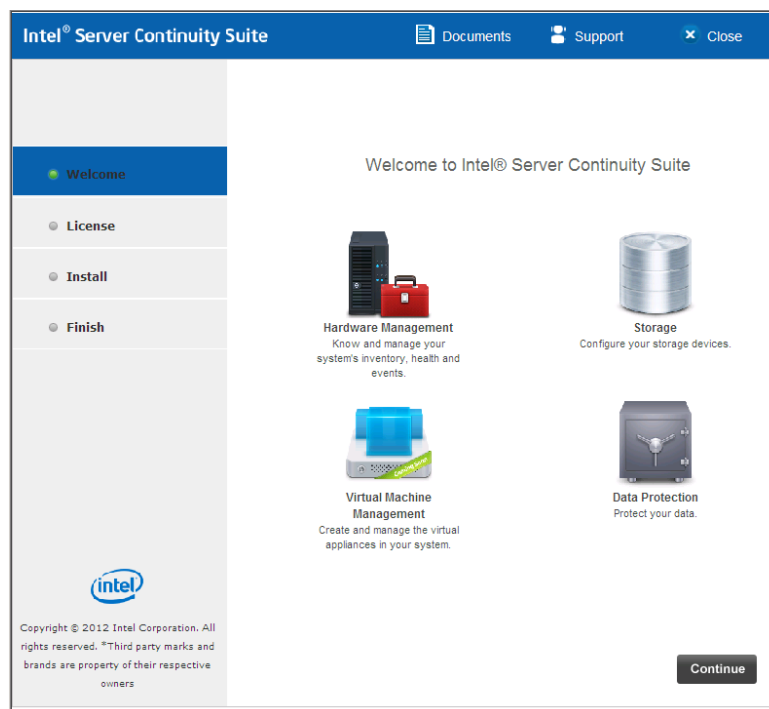


Figure 1: Welcome Screen

- 3 Click **Continue**. The **License** screen appears.
- 4 Read the license agreement.


Note: You must read the End User License Agreement (EULA) fully to understand the terms and conditions. You cannot install Intel® SCS

without accepting the EULA. If you **Disagree** to abide by the EULA, the installation halts and reverts to the **Welcome** screen.




If you agree to abide by the license agreement and want to continue with the installation, click **Agree**.

5 The Installation Status screen appears.

Prerequisite Checker verifies system compatibility and whether prerequisite software are available on the server.

- If the server does not meet the system requirements, they are indicated by .

Note: If you have not logged in as Administrator or if the server does not meet the system requirements, the Install button is disabled.

- Software that are installed are indicated by .
- Software that need to be installed are indicated by .
- Software that are getting installed are indicated by .

6 If you have logged in as an administrator and if the server meets the system requirements, an **Install** button is displayed. Click **Install**.

The installation status is displayed as Intel® SCS installer installs the prerequisite software that are not available on the server.

If PostgreSQL is not available on the server, the Intel® SCS installer installs it on the server. When prompted, you must enter a password of your choice for PostgreSQL service account configuration and click **Install**. The password must contain any three of the following: a number, a special character (except single quote and double quote symbols), a letter of the English alphabet in upper case, or a letter of the English alphabet in lower case. It is recommended not to use > and < symbols in the password.

Note: After providing the password for Intel® SCS database service account configuration, you must click the **Install** button to continue; if you press the **Enter** key on the keyboard to continue, some unexpected scripts may be launched.

Once the prerequisite software is installed, the installer prepares the InstallShield Wizard to install Intel® SCS and displays the Welcome screen.

Note: Intel® SCS supports RAID levels 0, 1, 5, 6, 10, and 1E to manage storage. Intel® RAID Web Console 2 is selected for installation by default.

7 Click **Next**. The **License Agreement** screen appears.

8 Read the license agreement.

Note: You must read the End User License Agreement (EULA) fully to understand the terms and conditions. You cannot install Intel® SCS without accepting the EULA. If you disagree to abide by the EULA, the installation halts.

If you accept the license agreement and want to continue with the installation, select **I accept the terms in the license agreement** by clicking the appropriate button.

9 Click **Next**. The **Destination Folder** screen appears. The default destination folder for installing Intel® SCS is C:\Program Files\Intel\SCS\.

10 To change the destination folder, click **Change** and select the folder in which you want to install Intel® SCS.

11 Click **Next**. The Ready to Install the Program screen appears.

12 Click **Install** and wait till the Administrator Account Configuration screen appears.

13 Enter a **username** and **password** of your choice in the respective fields. Reenter the password in the **Confirm** field.

Note: You must remember the username and password. After the installation is complete, you must use this username and password to log in to the application as administrator.

14 Click **Next**. The Database User Account Configuration screen appears.

- If PostgreSQL server is available in the server, enter the username and password of the PostgreSQL server.
- If PostgreSQL server is installed by the Intel® SCS installer, enter a **username** and **password** of your choice in the respective fields. The username for Database User Account cannot be the same as the username for Administrator account. Reenter the password in the **Confirm** field.

Note: You must remember the username and password. After the installation is complete, you must use this username and password to log in to the application as an administrator.

- 15 Click **Next**. The installer continues the installation.
- 16 If PostgreSQL server was available in the server and you did not enter the user name and password of the PostgreSQL server, the **Database ROOT Account Configuration** screen appears. The username is **postgres** by default and cannot be changed.
- 17 Enter the password of the PostgreSQL server in the respective field. Reenter the password in the **Confirm** field.
- 18 Click **Next**. The installer continues the installation and displays the Finish screen.
- 19 Click **Finish**. The installer finishes the installation and displays a **Continue** button.
- 20 Click **Continue**.
- 21 The **Thank You!** screen appears. Click **Reboot** if you want to reboot the server. Click **Close** to exit the installer.

4 Starting Intel® Server Continuity Suite

To start Intel® Server Continuity Suite:

- 1 Click Intel® SCS icon (labeled Intel® Server Continuity Suite) on the Desktop or type **https://localhost:7000/** in the address bar of your browser.

Note: When starting Intel® SCS using a browser, if you get a message that there is a problem with the website's security certificate, click the appropriate button in the message to continue starting Intel® SCS using the browser.

Note: You must enable JavaScript* in your browser for all functionalities in Intel® SCS to work.

The login screen appears.

- 2 Enter the user name and password.
- 3 Click **Sign In**.

The Dashboard appears.

5 Uninstalling Intel® Server Continuity Suite

You can uninstall Intel® Server Continuity Suite (Intel® SCS) using the **Add or Remove Programs** console in the Microsoft Windows* **Control Panel** in the server or using the Microsoft Windows* **Start** menu.

To uninstall Intel® SCS using Control Panel:

- 1 Click the Microsoft Windows* **Start** button on the Windows* taskbar of the server and click on **Control Panel**.
- 2 In the Control Panel, open **Add or Remove Programs**.
- 3 In the Currently installed programs window, click Intel® Server Continuity Suite.
- 4 Click **Remove**.
- 5 Click **Yes** in the prompt to confirm uninstallation.
Intel® SCS is uninstalled.
- 6 Reboot the system to complete the uninstallation.

Note: If you uninstall the PostgreSQL server, you must delete the PostgreSQL folder from C:\ProgramData\ before installing Intel® SCS again.

To uninstall Intel® SCS using **Start** menu:

- 1 Click the Microsoft Windows* **Start** button on the Windows* taskbar of the server.
- 2 Click **All Programs > Intel® > Uninstall Intel® Server Continuity Suite**.
- 3 Click **Yes** in the prompt to confirm uninstallation.
Intel® SCS is uninstalled.
- 4 Reboot the system to complete the uninstallation.

Note: If you uninstall the PostgreSQL server, you must delete the PostgreSQL folder from C:\ProgramData\ before installing Intel® SCS again.

6 Contacting Support

If you encounter an issue with your software, please follow the steps below to obtain support on your product:

- 1 Connect to our [support web page](#) for 24x7 support and to get the latest technical support information on all Intel® Enterprise Servers, Storage Platforms, and Management Software. Information available at the support site includes:
 - [Latest BIOS, firmware, drivers, and utilities](#) available through Intel® download center
 - Product documentation, flash demos, installation guides, and quick start guides
 - A searchable knowledgebase of product information that you can access from any page in the support site
- 2 Utilize the [community forums](#).
- 3 [Chat live](#) with a support person.
- 4 Contact an Intel® representative using one of the [support phone numbers](#). Charges may apply.

Intel® now offers Channel Program members [24x7 technical phone support](#)⁺ on Intel® server boards, server chassis, server RAID controller cards, and Intel® Server Management.

⁺ Requires Login to the Reseller Site to obtain the 24x7 number.

7 Documentation

The following documents are available with the installer to help you use Intel® Server Continuity Suite and its upgrades:

- Installation Guide
- User Guide

The latest user guide is available at

<http://support.intel.com/support/motherboards/server/scs/sb/CS-032917.htm>. Related documentation is available at <http://support.intel.com/support/motherboards/server/scs/>.