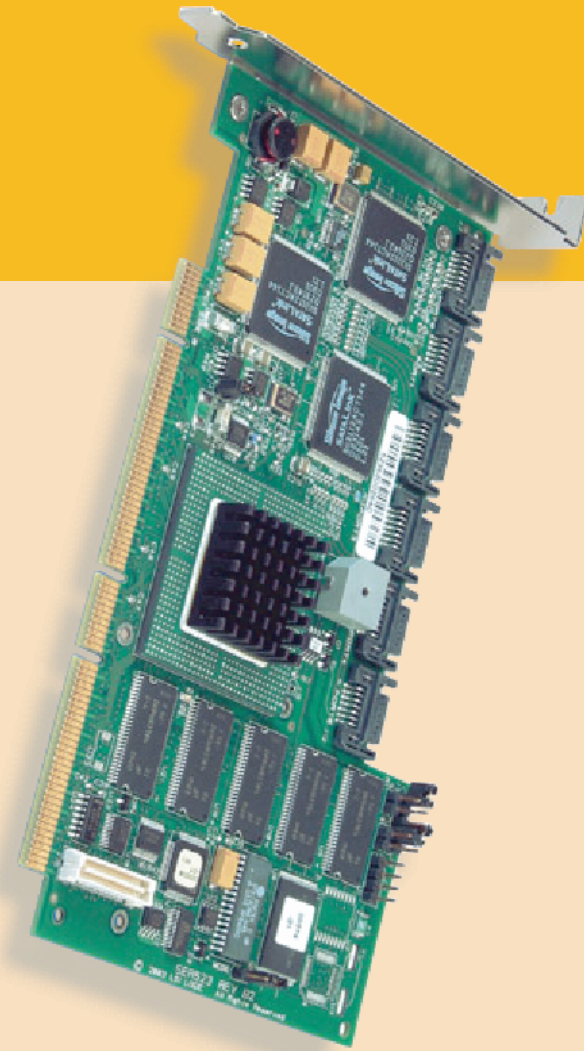




Intel® RAID Controller SRCS16 Quick Start User's Guide



This guide contains step-by-step instructions for installing Microsoft® Windows® Server 2003/Microsoft® Windows® 2000 Advanced Server or Red Hat® Linux 9.0 on a single RAID volume using available disks. If you plan to use a different operating system, need a more advanced RAID configuration, or need safety and regulatory information, you should refer to the Hardware and Software Guides. You can find these guides on the Resource CD accompanying the Intel® RAID Controller SRCS16. These guides and other supporting documents (including a list of supported server boards) are also located on the web at: <http://support.intel.com/support/motherboards/server>.

If you are not familiar with ESD (Electrostatic Discharge) procedures used during system integration, please see your Hardware Guide for complete ESD procedures. For more details on Intel® RAID controllers please see: www.intel.com/go/serverbuilder

What you will need

- SATA hard disk drives
- Intel® RAID Controller SRCS16
- Server board with a PCI compatible slot (recommend use of a 64-bit, 66MHz slot)
- Intel® RAID Controller SRCS16 Resource CD
- A blank formatted diskette
- Operating System: (Microsoft® Windows® Server 2003/Microsoft® Windows® 2000 Advanced Server or Red Hat® Linux 9.0) Installation Media

Important Information

You can find the Hardware and Software Guides on the Resource CD that accompanied the Intel® RAID Controller SRCS16.

These guides and other supporting documents (including a list of supported server boards) are located on the web at: <http://support.intel.com/support/motherboards/server>.

Building Value With Intel Server Products, Programs and Support

Get the high-value server solutions you need by taking advantage of the outstanding value Intel provides to system integrators:

- High-quality server building blocks
- Extensive breadth of server building blocks
- Solutions and tools to enable e-Business
- Intel® Server Management
- Comprehensive training services
- Worldwide 24x7 technical support (AT&T Country Code + 866-655-6565)¹
- World-class service, including a three-year limited warranty and Advanced Warranty Replacement¹

For more information on Intel's added-value server offerings, visit the Intel® ServerBuilder website at: www.intel.com/go/serverbuilder

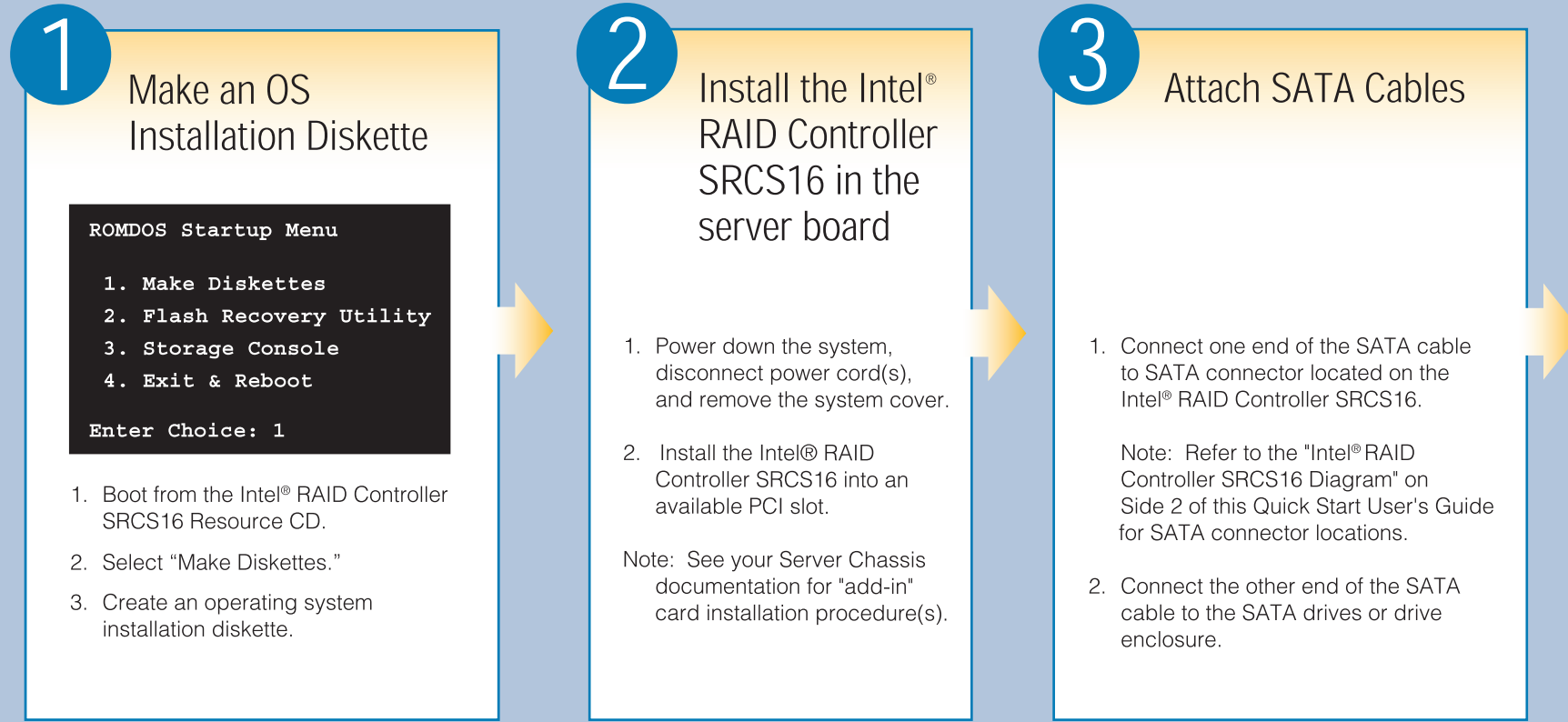
Intel® ServerBuilder is your one-stop shop for information about all of Intel's Server Building Blocks such as:

- Product information including product briefs and technical product specifications
- Sales tools such as videos and presentations
- Training information, such as the Intel® Online Learning Center
- Support Information and much more

¹Available only to Intel® Channel Program Members, part of Intel® e-Business Network.

Alarm Information

For information about the alarms and how to turn silence or disable the alarm, see the reverse side of this document.



4 Use the Intel® RAID BIOS Console to Create a RAID Volume

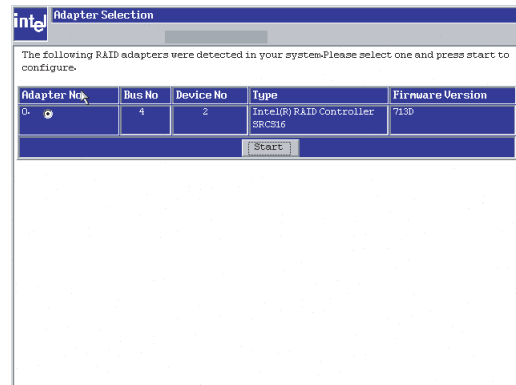
Note: As necessary, refer to "Choosing the Right RAID Level" on Side 2 of this Quick Start User's Guide for a brief description of RAID levels.

1. Power on the system and press <Ctrl> + <G> when the screen below appears.

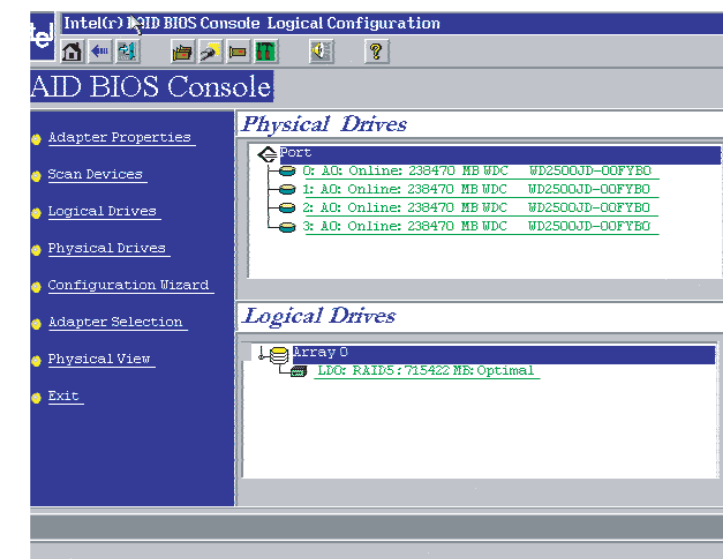


2. The following two messages will appear at the bottom of the screen: "Intel® RAID BIOS Console will start after POST completes," "Please wait to start Intel® RAID BIOS Console ..."

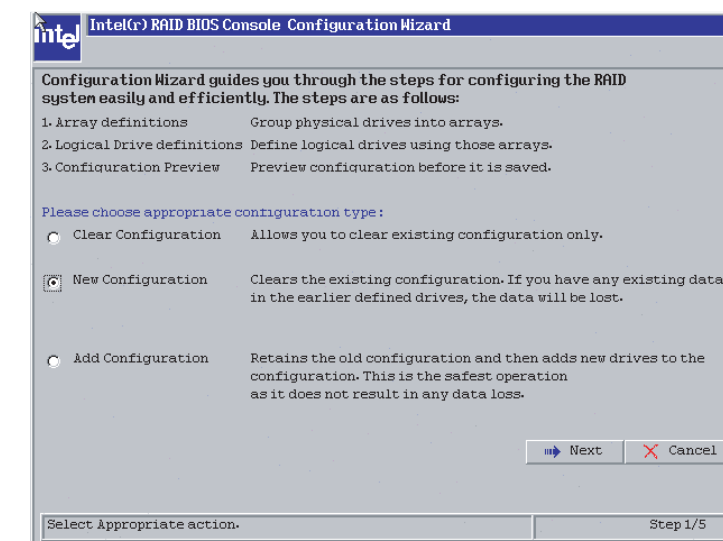
3. When Intel® RAID BIOS Console starts, it will display the Intel® RAID Controller SRCS16 installed in the system. Click on the "Adapter No." radio button, then click **Start**.



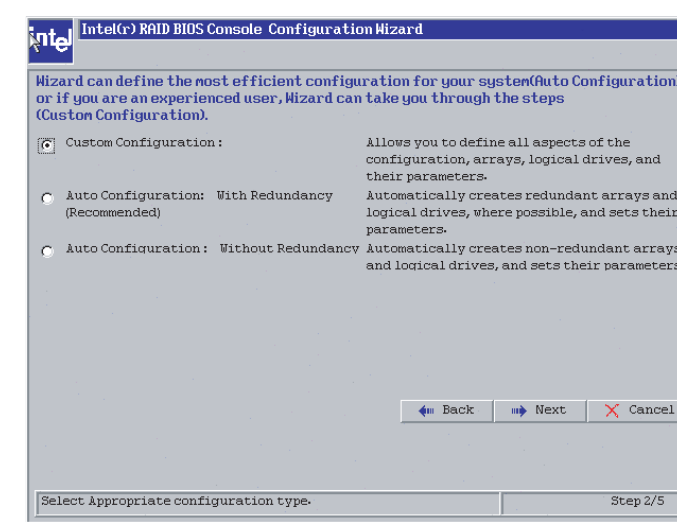
4. After a brief pause, the RAID BIOS Console screen will appear. Click on **Configuration Wizard**.



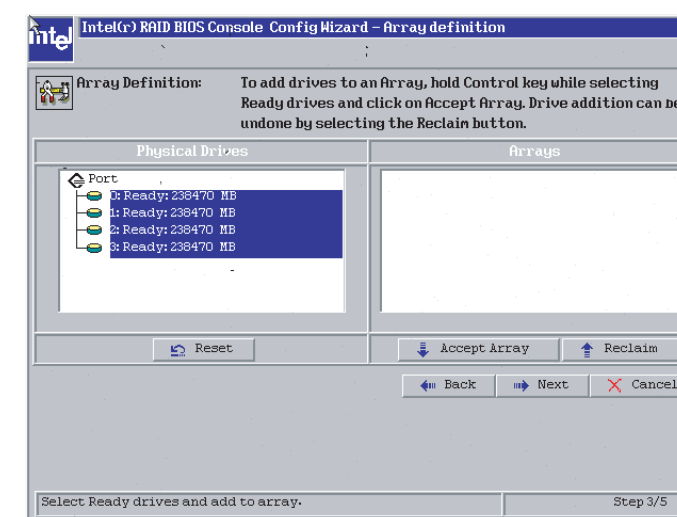
5. Select **New Configuration** and click **Next**.



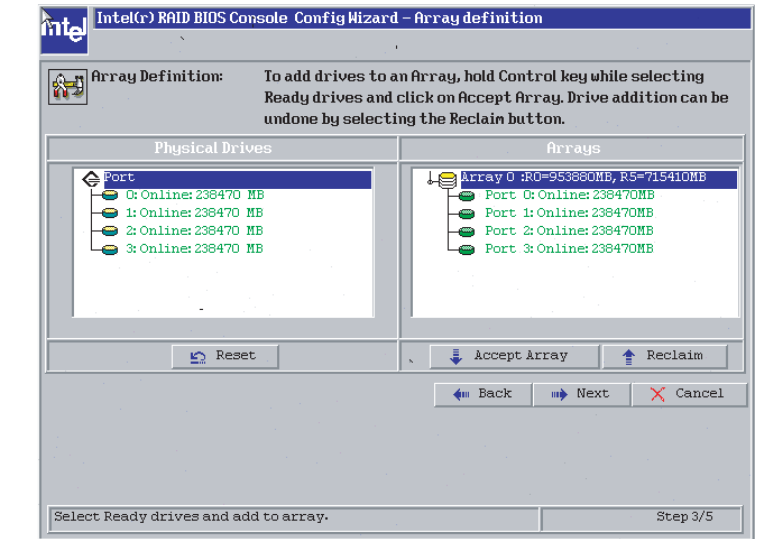
6. For this example, we used **Custom Configuration**. Click **Next**. (For further information, refer to the Software Guide on the Resource CD.)



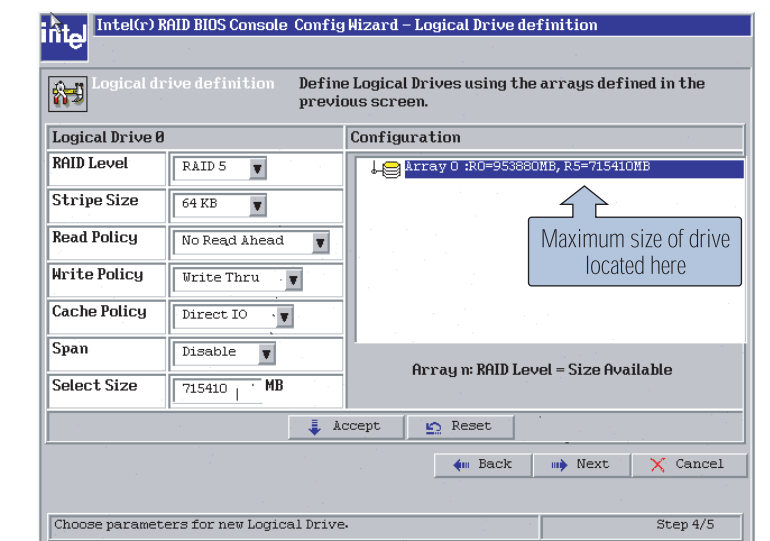
7. Add physical drives to the array by holding the control key while clicking on ready drives. Once you have selected all of the drives you wish to add to the array, click **Accept Array** and then click **Next**.



8. You can define further arrays or click **Accept Arrays** if finished and then click **Next**.



9. Select the **RAID Level** from the pull-down box. Select the **Stripe Size**. Enter in the size of the logical drive. Click **Accept**.



C62104-002

