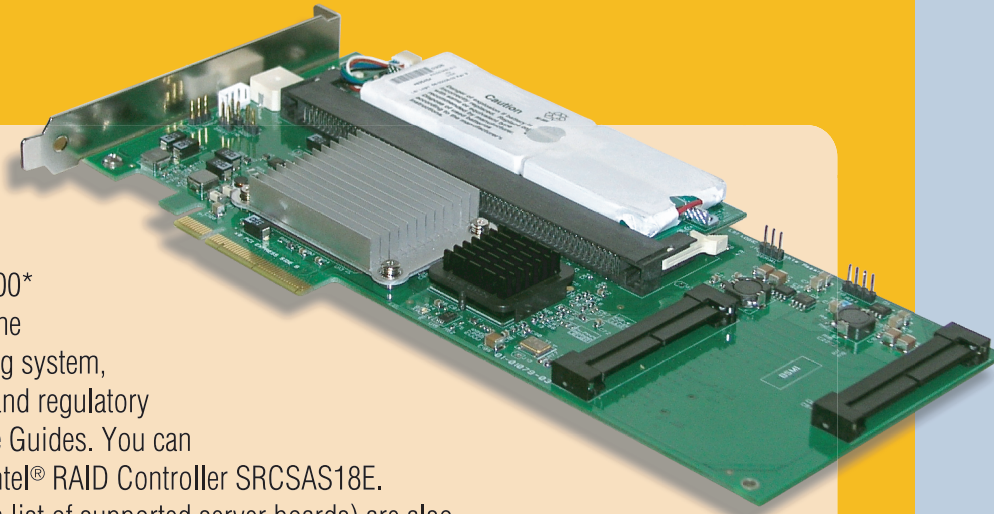




# Intel® RAID Controller SRCAS18E Quick Start User's Guide



This guide contains step-by-step instructions for installing Microsoft Windows Server 2003\* / Microsoft Windows 2000\* Advanced Server or Red Hat\* Linux on a single RAID volume using available disks. If you plan to use a different operating system, need a more advanced RAID configuration, or need safety and regulatory information, you should refer to the Hardware and Software Guides. You can find these guides on the Resource CD accompanying the Intel® RAID Controller SRCAS18E. These guides and other supporting documents (including a list of supported server boards) are also located on the web at: <http://support.intel.com/support/motherboards/server>.

If you are not familiar with ESD (Electrostatic Discharge) procedures used during system integration, see your Hardware Guide for complete ESD procedures. For more details on Intel® RAID controllers, see: [www.intel.com/go/serverbuilder](http://www.intel.com/go/serverbuilder).

Note: Shown with optional Intel® Portable Cache Module 2 installed.

## What you will need

- SAS / SATA hard disk drives
- Intel® RAID Controller SRCAS18E
- Server board with a x8 PCI Express\* slot
- Intel® RAID Controller SRCAS18E Resource CD
- Operating system installation media: Microsoft Windows Server 2003\*, Microsoft Windows 2000\* Advanced Server or Red Hat\* Linux

## Important Information

You can find the Hardware and Software Guides on the Resource CD that accompanied the Intel® RAID Controller SRCAS18E.

These guides and other supporting documents (including a list of supported server boards) are located on the web at: <http://support.intel.com/support/motherboards/server>.

## Building Value With Intel Server Products, Programs and Support

Get the high-value server solutions you need by taking advantage of the outstanding value Intel provides to system integrators:

- High-quality server building blocks
- Extensive breadth of server building blocks
- Solutions and tools to enable e-Business
- Intel® Server Management
- Comprehensive training services
- Worldwide 24x7 technical support (AT&T Country Code + 866-655-6565)\*
- World-class service, including a three-year limited warranty and Advanced Warranty Replacement†

For more information on Intel's added-value server offerings, visit the Intel® ServerBuilder website at: [www.intel.com/go/serverbuilder](http://www.intel.com/go/serverbuilder).

Intel® ServerBuilder is your one-stop shop for information about all of Intel's Server Building Blocks such as:

- Product information, including product briefs and technical product specifications
- Sales tools, such as videos and presentations
- Training information, such as the Intel® Online Learning Center
- Support Information and much more

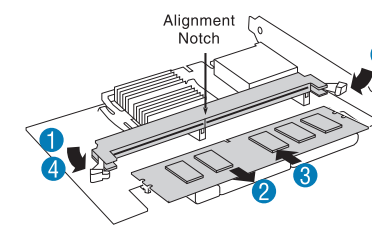
\*Available only to Intel® Channel Program Members, part of Intel® e-Business Network.

## Audible Alarm Information

For information about the audible alarm and how to silence or disable it, see the reverse side of this document.

## 1 Install Intel® Portable Cache Module 2 (optional)

- 1 Open the DIMM socket levers.
- 2 Remove the DIMM from the socket.



- 3 Line up the Portable Cache Module 2 with the socket, making sure the cutout in the module matches with the alignment notch.
- 4 Push the Portable Cache Module 2 into the socket and make sure the socket levers are securely latched.

## 2 Install the Intel® RAID Controller SRCAS18E

- 1 Power down the system, disconnect power cord(s), and remove the system cover.
- 2 Install the Intel® RAID Controller SRCAS18E into an available x8 PCI Express slot.

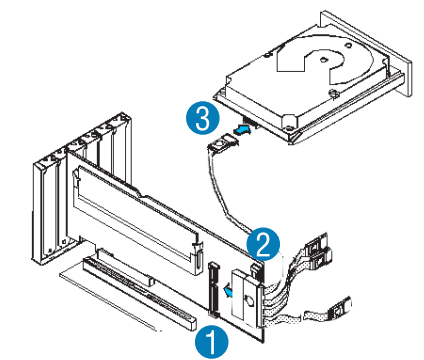
Note: See your server board and chassis documentation for add-in card installation procedure(s).

## 3 Attach SAS / SATA Cables

To attach a cable that connects to a backplane board, see your server board and chassis documentation.

See the "Intel® RAID Controller SRCAS18E Diagram" on side 2 of this Quick Start User's Guide for SATA connector locations.

- 1 Connect the wide end of the SAS / SATA cable to connector J11 on the Intel® RAID Controller SRCAS18E.
- 2 If using more than four drives, connect the wide end of the second SAS / SATA cable to connector J4 on the Intel® RAID Controller SRCAS18E.

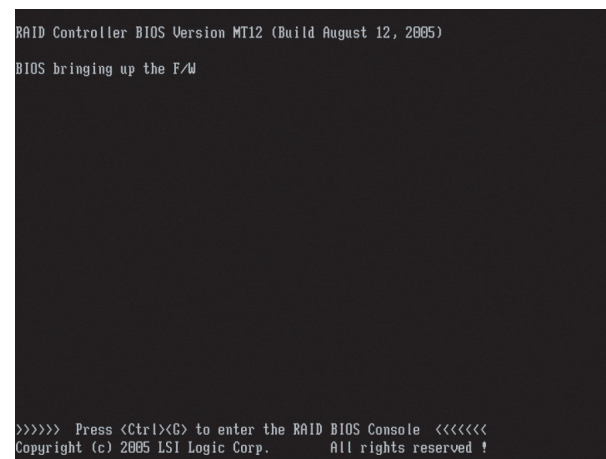


- 3 Connect the other end(s) of the SAS / SATA cable(s) to the SAS / SATA drives or to SAS / SATA connectors on the backplane.

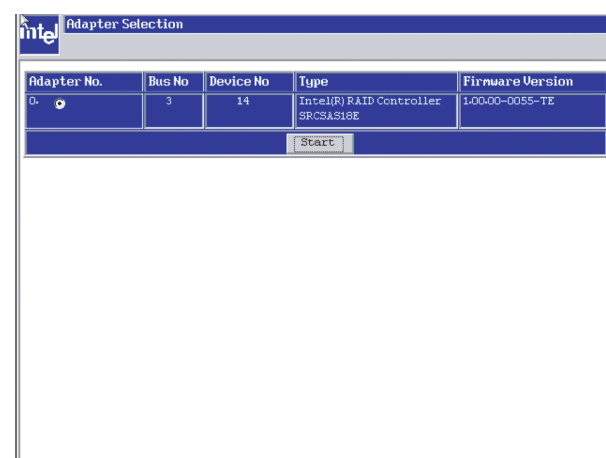
## 4 Use the Intel® RAID BIOS Console 2 to Create a RAID Volume

Note: As necessary, see "Choosing the Right RAID Level" on side 2 of this Quick Start User's Guide for a brief description of RAID levels.

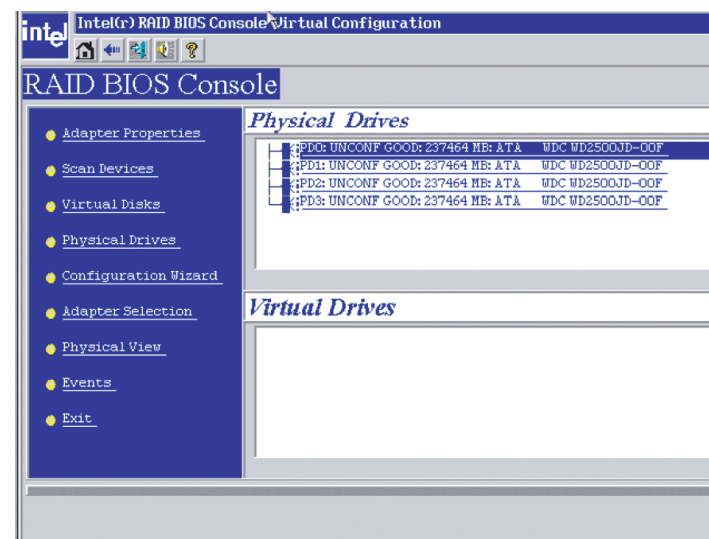
- 1 Power on the system and press <Ctrl> + <C> when the screen below is displayed.



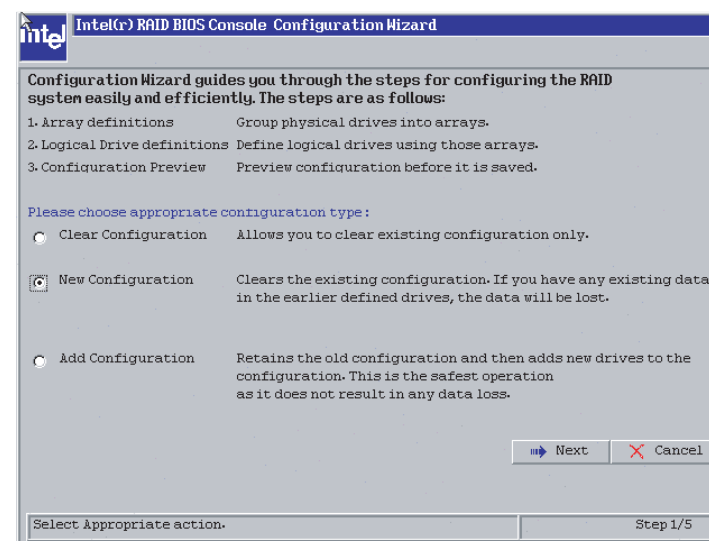
- 2 When Intel® RAID BIOS Console 2 starts, it will display the Intel® RAID Controller SRCAS18E installed in the system. Click on the "Adapter No." radio button, then click **Start**.



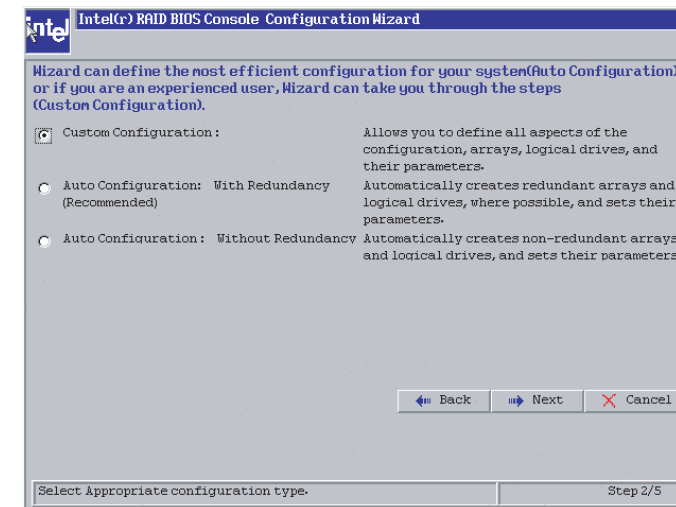
- 3 After a brief pause, the RAID BIOS Console 2 screen is displayed. Click **Configuration Wizard**.



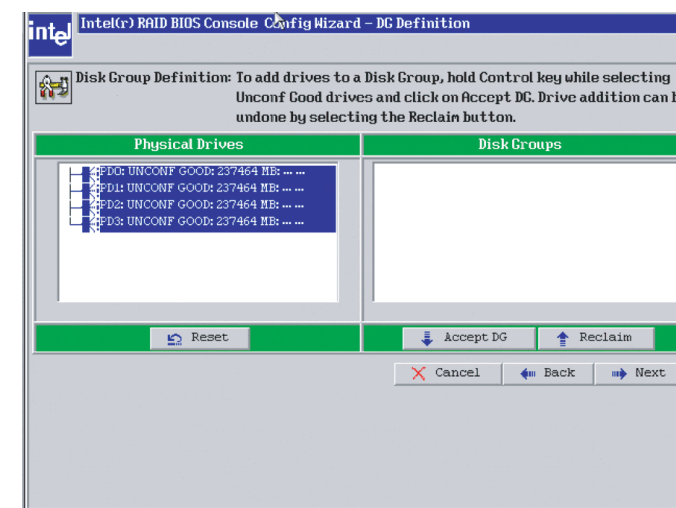
- 4 Select **New Configuration** and click **Next**.



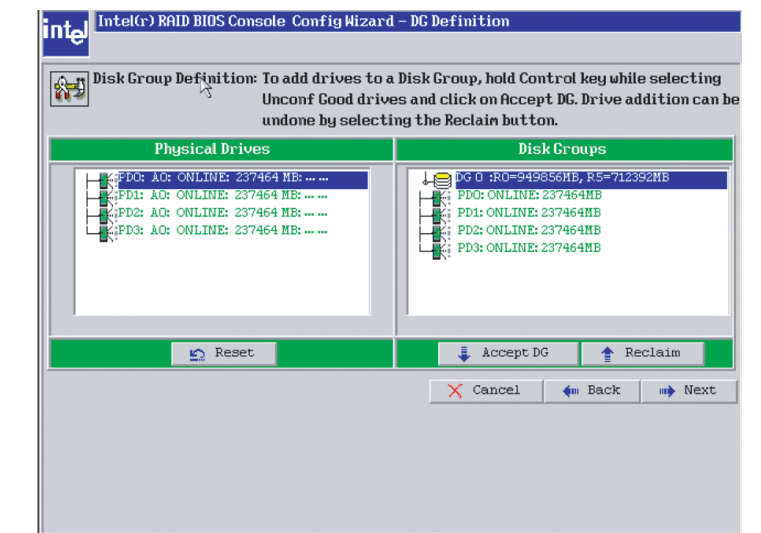
- 5 For this example, **Custom Configuration** is used. Click **Next**. (For further information, see the Software Guide on the Resource CD.)



- 6 Add physical drives to the array by pressing the Ctrl key while clicking on entries under Physical Drives. Once you have selected all of the drives you wish to add to the array, click **Accept DG**. Click **Next**.



- 7 Define further arrays or click **Accept DG** if finished. Click **Next**.



- 8 Select the **RAID Level** from the pull-down box. Select the **Stripe Size**. Enter the size of the logical drive. Click **Accept**. Click **Next** if the program does not automatically progress to the next screen.

