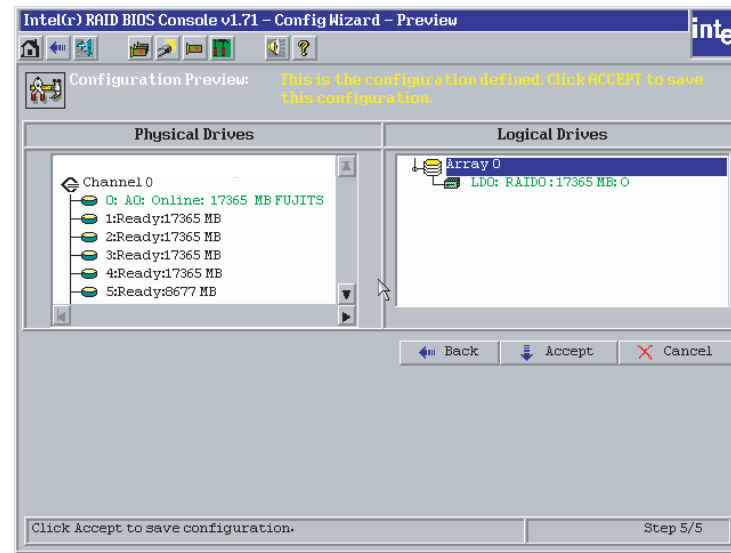
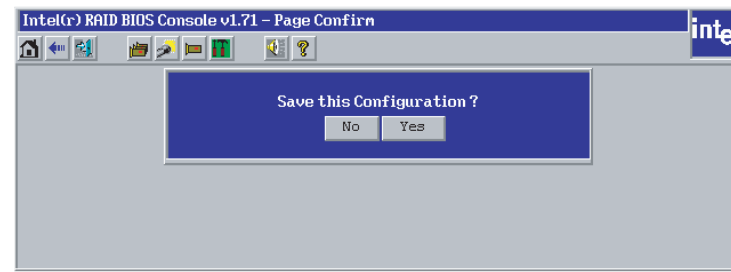


5 (Cont.) Use the Intel® RAID BIOS Console to Create a RAID Volume

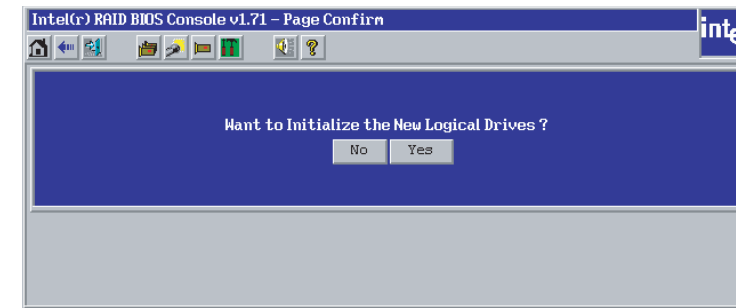
10. Click on **Accept**.



11. Click **Yes**.



12. Click **Yes**, then **Exit**.



Creation of a RAID Volume is now complete.

6 Install the Server Operating System

Microsoft Windows* Server 2003/
Microsoft* Windows* 2000
Advanced Server Installation*

OR *Red Hat* Enterprise Linux 3 Installation*

Step A: Install Microsoft* Windows* Server 2003 or Microsoft* Windows* 2000 Advanced Server

IMPORTANT: When the blue setup screen first appears, press **<F6>**.

1. Boot the system with the Windows* Server 2003 or Windows* 2000 Advanced Server CD-ROM.
2. Press **<F6>** as soon as the first blue screen appears to bypass mass storage detection.
3. When prompted to specify a mass storage controller:
 - Select **"S"** to specify additional storage devices.
 - Insert Microsoft* Windows* Server 2003 or Microsoft* Windows* 2000 Advanced Server installation driver diskette (created in Step 1 of this Quick Start User's Guide).
 - Press **<Enter>** to select the "Installation Driver" and continue with Windows installation.

Step B: Install the Intel® RAID Web Console Package

Install the Intel® RAID Web Console Package from the Resource CD. For more details, see the Software Guide.

Step C: To manage a RAID array from within Microsoft* Windows*

Open your Web browser and point to <http://localhost:3570>. For more information, see the Software Guide.

IMPORTANT: Complete the steps on the reverse side before beginning your OS installation. If you are installing a version other than Red Hat* Enterprise, Linux 3, refer to <http://support.intel.com/support/motherboards/server> for installation instructions.

Step A: Install Red Hat* Enterprise Linux 3

Read the Red Hat documentation to understand the disk space / size requirements for Red Hat* Enterprise Linux 3.

1. Boot the system with the Red Hat* Enterprise Linux 3 CD-ROM
2. At the boot prompt, insert the Linux driver disk that you created in Step on the reverse side of this document. Type Linux dd. Press **<Enter>**.
3. Follow the on-screen instructions to complete the installation. The RAID controller driver will be automatically detected and installed.

Step B: Install the Intel® RAID Web Console Package

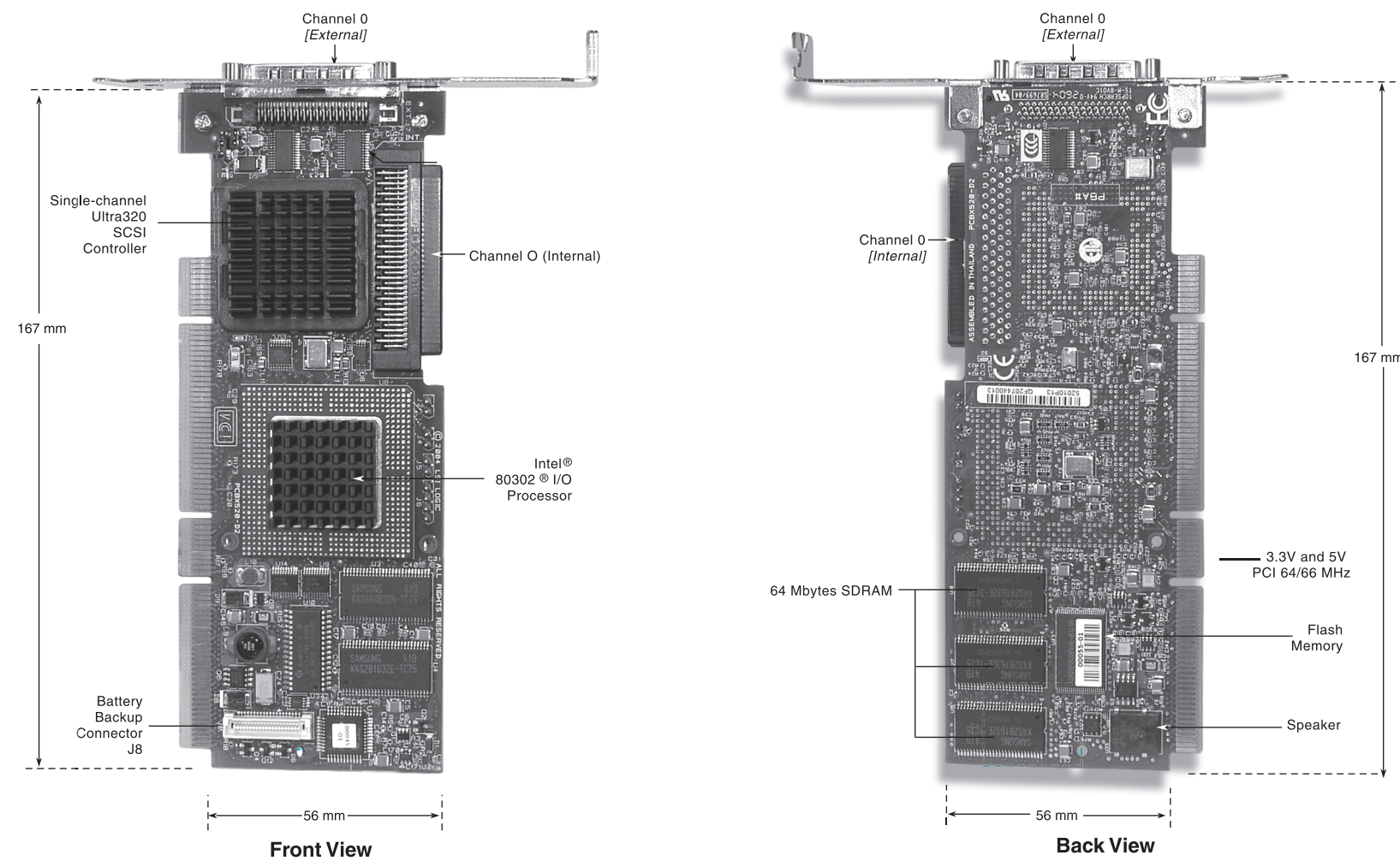
Install the Intel® RAID Web Console Package from the Resource CD. For more details, see the Software Guide.

Step C: To manage a RAID array from within Red Hat* Enterprise Linux 3

Open your Web browser and point to <http://localhost:3570>. For more information, see the Software Guide.

For other O/S installations, refer to the Software Guide or readme files on the resource CD for the driver being installed.

Intel® RAID Controller SRCU41L Diagram



Choosing the Right RAID Level

