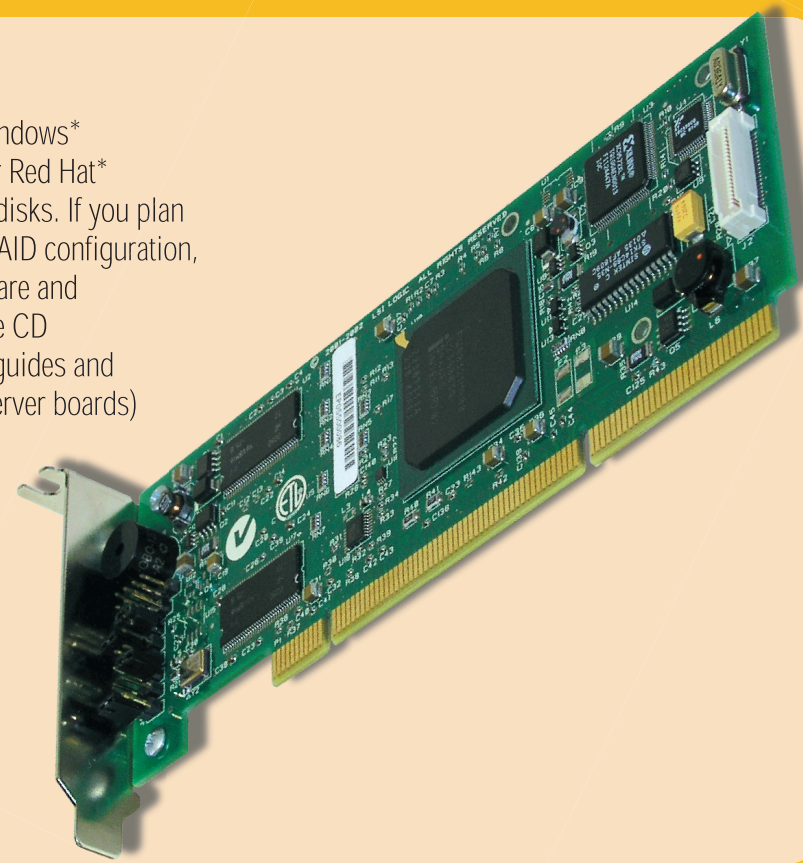




# Intel® RAID Controller SRCZCRX Quick Start User's Guide

This guide contains instructions for installing Microsoft® Windows® Server 2003/Microsoft® Windows® 2000 Advanced Server or Red Hat® Enterprise Linux 3 on a single RAID volume using available disks. If you plan to use a different operating system, need a more advanced RAID configuration, or need safety and regulatory information, refer to the Hardware and Software Guides. You can find these guides on the Resource CD accompanying the Intel® RAID Controller SRCZCRX. These guides and other supporting documents (including a list of supported server boards) are also located on the web at: <http://support.intel.com/support/motherboards/server>.

If you are not familiar with ESD (Electrostatic Discharge) procedures used during system integration, please see your Hardware Guide for complete ESD procedures. For more details on Intel® RAID controllers please see: [www.intel.com/go/serverbuilder](http://www.intel.com/go/serverbuilder)



## What you will need

Intel® RAID Controller SRCZCRX  
Server board with a PCI-X, 64-bit, MROMB-enabled slot  
Intel® RAID Controller SRCZCRX Resource CD  
Operating System Installation Media: Microsoft® Windows® Server 2003 / Microsoft® Windows® 2000 Advanced Server, or Red Hat® Enterprise Linux 3  
SCSI hard disk drives (optional)

## Important Information

You can find the Hardware and Software Guides on the Resource CD that accompanied the Intel® RAID Controller SRCZCRX.

These guides and other supporting documents (including a list of supported server boards) are located on the web at: <http://support.intel.com/support/motherboards/server>.

## Building Value With Intel Server Products, Programs and Support

Get the high-value server solutions you need by taking advantage of the outstanding value Intel provides to system integrators:

- High-quality server building blocks
- Extensive breadth of server building blocks
- Solutions and tools to enable e-Business
- Intel® Server Management
- Comprehensive training services
- Worldwide 24x7 technical support (AT&T Country Code + 866-655-6565)<sup>1</sup>
- World-class service, including a three-year limited warranty and Advanced Warranty Replacement<sup>1</sup>

For more information on Intel's added-value server offerings, visit the Intel® ServerBuilder website at: [www.intel.com/go/serverbuilder](http://www.intel.com/go/serverbuilder)

Intel® ServerBuilder is your one-stop shop for information about all of Intel's Server Building Blocks such as:

- Product information including product briefs and technical product specifications
- Sales tools such as videos and presentations
- Training information, such as the Intel® Online Learning Center
- Support Information and much more

<sup>1</sup>Available only to Intel® Channel Program Members, part of Intel® e-Business Network.

## 1 Make Installation Diskette

1. Insert the Resource CD.
2. Non-Windows® system only: open the linux.htm file at the root of the CD.
3. From the left menu of the welcome screen that opens, select the appropriate operating system. It is under the heading of "Software and Drivers."
4. Windows and NetWare® drivers:
  - Select the driver link
  - Open the driver zip executable to extract the driver files to a user-specified location, such as a floppy drive

Linux or other operating system drivers:  
- Select the driver link  
- Save the compressed driver files to a user-specified location

5. Set this disk aside. It will be used in step 6, on the back side of this guide.

## 2 Install the Intel® RAID Controller SRCZCRX in the server

1. (Chassis Dependent) If necessary replace the standard bracket on the controller card with the low-profile bracket.
2. Power down the system, disconnect power cord(s), and remove the system cover.
3. Install the Intel® RAID Controller SRCZCRX into an available MROMB-enabled PCI slot. See your server board documentation to locate the correct slot.

Notes: See your server board documentation for slot identification and "add-in" card installation procedure(s).

The RAID Controller SRCZCRX uses the SCSI controller on the server board. Therefore, no SCSI cables are connected to the RAID controller.

## 3 Set System BIOS Boot Order

1. Boot the server system. During POST, use the indicated keystroke to enter the system BIOS utility.
  2. Navigate to the screen that allows you to set the Boot Priority.
- Note: The navigation to BIOS screens varies by server system, refer to the server board Technical Product Specification at <http://support.intel.com/support/motherboards/server> for information about the BIOS screens.
3. Select a boot priority order that allows your server to boot from the CD-ROM drive.
  4. Navigate to the screen that allows you to set the priority for Legacy SCSI Option ROM. Set Legacy SCSI Option ROM as the highest priority.
  5. Save your changes and exit the utility. The server system will reboot.

## 4 Use the Intel® RAID BIOS Console to Create a RAID Volume

Note: As necessary, refer to "Choosing the Right RAID Level" on Side 2 of this Quick Start User's Guide for a brief description of RAID levels.

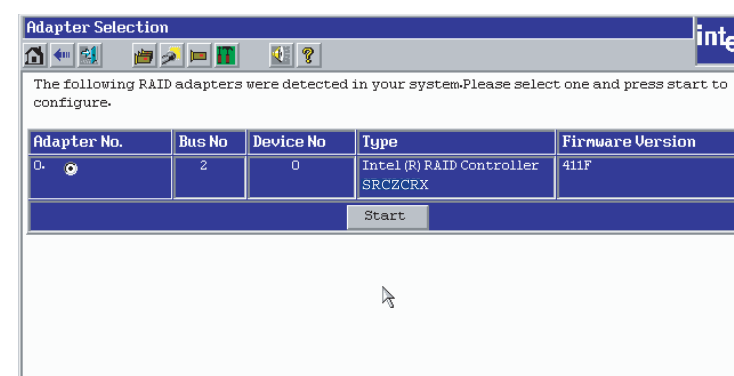
1. Power on the system and press <Ctrl> + <G> when the screen below appears.

```
PCI RAID Storage Controller BIOS Version T105 (Build June 20,2003)
[ PCI 0/1 ] Self-tests OK, IRQ 11
[ PCI 0/1 ] Intel Storage RAID Controller Firmware Version T310
[ PCI 0/1 ] Controller DRAM=128MB (SDRAM)
[ PCI 0/1 ] Battery module is present
[ PCI 0/1 ] Channel-0 TD-0 -- QUANTUM VIKING II 4.5WLS (40MB/s)
[ PCI 0/1 ] Channel-0 TD-4 -- IBM DCAS-34330W (20MB/s)
[ PCI 0/1 ] 1 Logical Drives found on the host controller.
1 logical drive(s) handled by BIOS.

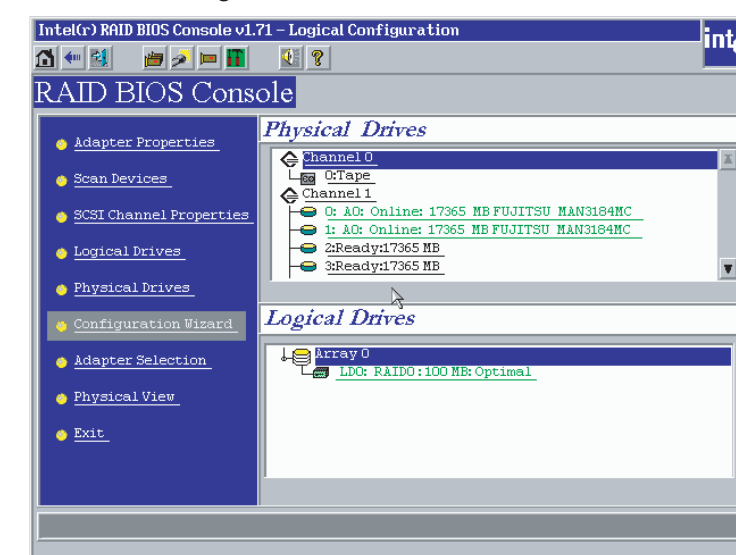
>>>>> Press <Ctrl><G> to enter the RAID Storage Console <<<<<
RAID Configuration Utility will start after POST completes
Copyright (c) LSI Logic Corp. All rights reserved !
```

2. The following two messages will appear at the bottom of the screen: "Intel® RAID BIOS Console will start after POST completes", "Please wait to start Intel® RAID BIOS Console ..."

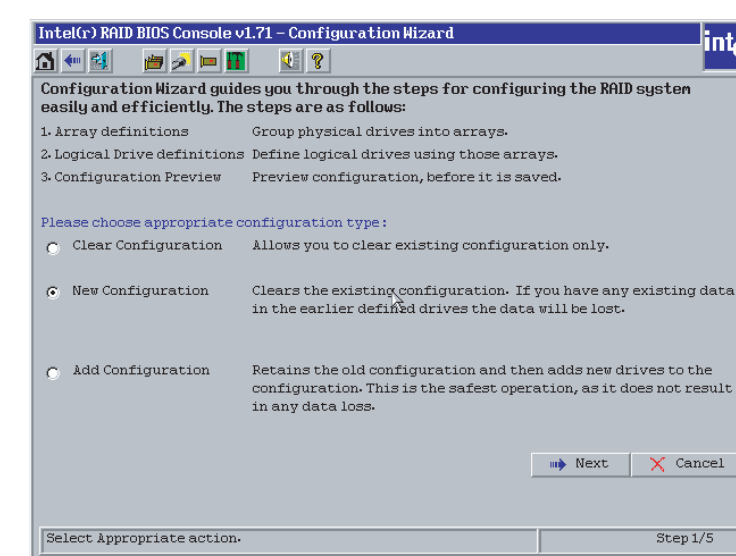
3. When Intel® RAID BIOS Console starts, it will display the Intel® RAID Controller SRCZCRX installed in the system. Click on the "Adapter No." radio button, then click **Start**.



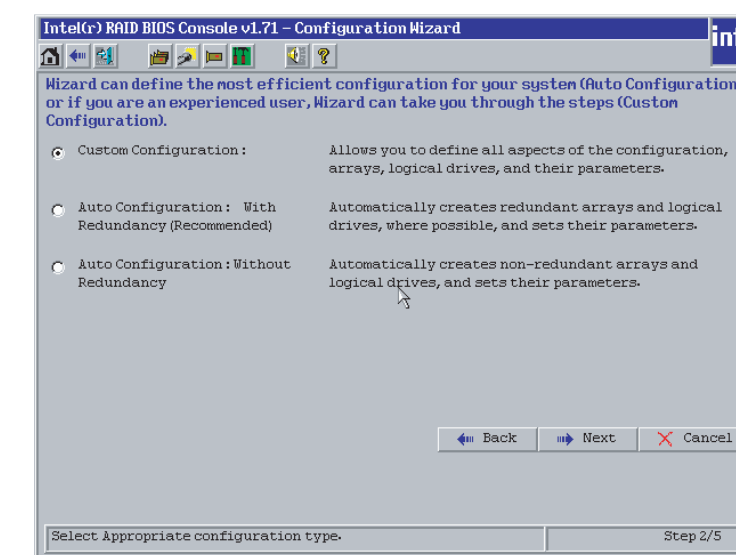
4. After a brief pause, the RAID BIOS Console screen will appear. Click on **Configuration Wizard**.



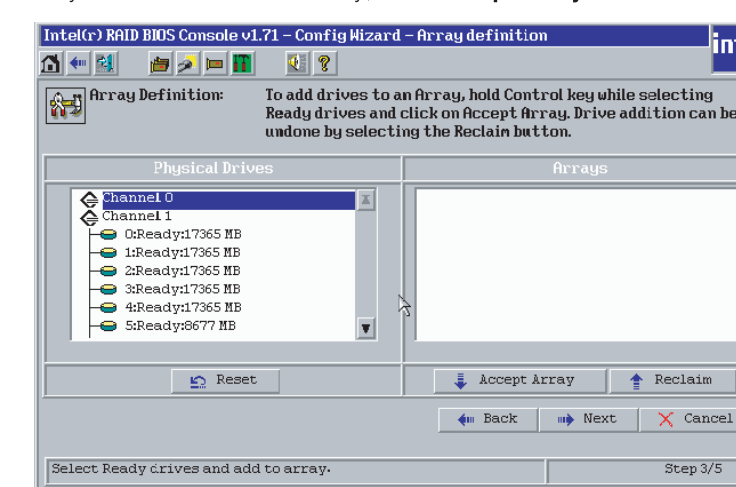
5. Select **New Configuration** and click **Next**.



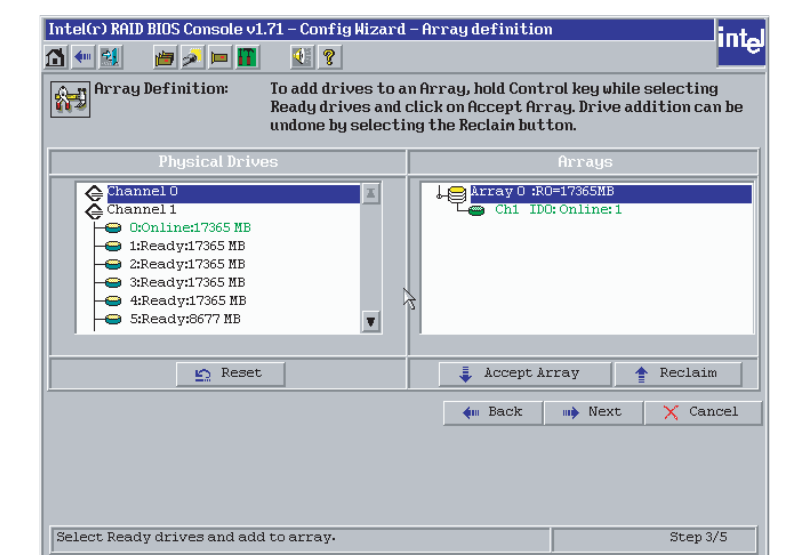
6. For this example, we used **Custom Configuration**. Click **Next**. (For further information, refer to the Software Guide on the Resource CD.)



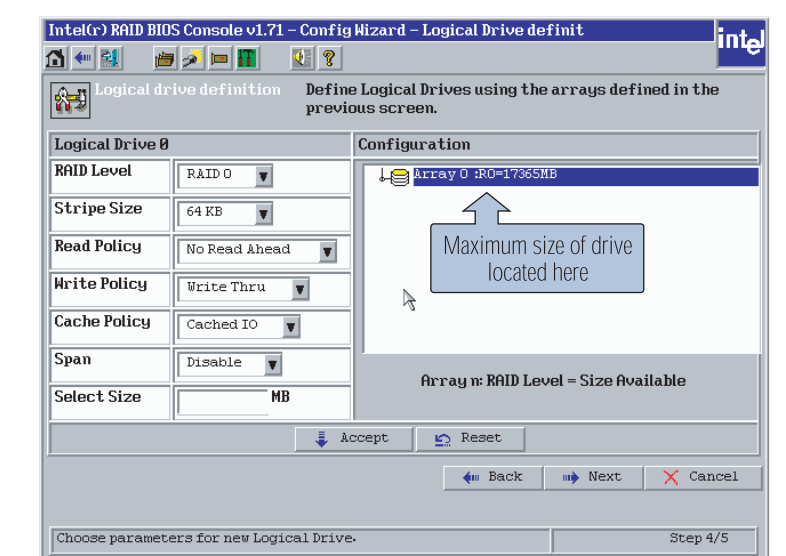
7. Add physical drives to the array by holding the control key while clicking on ready drives. Once you have selected all of the drives you wish to add to the array, click **Accept Array** and then click **Next**.



8. You can define further arrays or click **Accept Arrays** if finished and then click **Next**.



9. Select the **RAID Level** from the pull-down box. Select the **Stripe Size**. Enter in the size of the logical drive. Click **Accept**.



C76893-002

