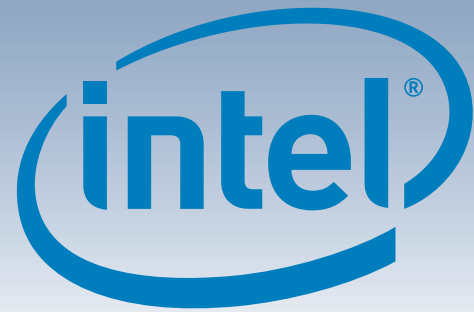


Intel® Entry Storage System SS4000-E Quick Start User's Guide

Thank you for purchasing an Intel® Entry Storage System SS4000-E. This document describes how to set up the Intel® Entry Storage System SS4000-E, install hard drives, turn on the system, and complete basic hardware and software configuration for the system. This document does not cover installation of the Intel® Client Backup and Recovery software. For information on installing and using the Intel® Client Backup and Recovery software, see Chapter 4, "Protecting Local Disks," in the *Intel® Entry Storage System SS4000-E User Guide*, which is included on the Resource CD.

This guide and other supporting documents are located on the web at <http://support.intel.com/support/motherboards/server>.

If you are not familiar with ESD (Electrostatic Discharge) procedures used during system integration, please see the *Intel® Server Board and Server Chassis Safety Information* document at <http://support.intel.com/support/motherboards/server/sb/cs-010770.htm>.



Installation Requirements

- One wired RJ-45 network connection
- Microsoft Internet Explorer® 6.0 or later, or Firefox® 1.06 or later
- One installed Serial ATA hard drive with 80-GB minimum capacity (a minimum of two drives are recommended to provide data protection)

Refer to the *Tested Hardware and Operating Systems List* on <http://support.intel.com/support/motherboards/server> for a list of compatible operating systems and hard drives.

Package Contents

- Intel® Entry Storage System SS4000-E
- This document
- Hard drive labels
- Four empty hard drive carriers
- One RJ-45 LAN cable
- Software CD
- Recovery CD

1 Remove Hard Drive Carriers

Note: At least one SATA drive with a minimum 80-GB capacity must be installed before the storage system can be used.

The Intel® Entry Storage System SS4000-E ships without hard drive carriers installed. However, your integrator may have installed the hard drive carriers for you.

If hard drive carriers are already installed and contain no hard drives:

- 1 Release hard drive carrier from drive bay by pressing latch in handle towards drive hinge.
- 2 Once released, slide hard drive carrier out of drive bay.

If hard drive carriers are still in their original shipping package:

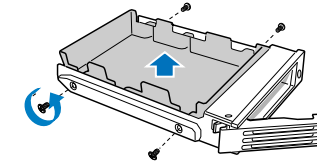
Remove hard drive carriers from packaging material.



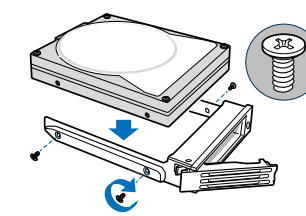
Warning: Remove hard drive carriers in order from top to bottom.

2 Install Hard Drives into Hard Drive Carriers

- 1 Remove the four screws that secure the plastic baffle to the hard drive carrier. Remove baffle (save it for future use).



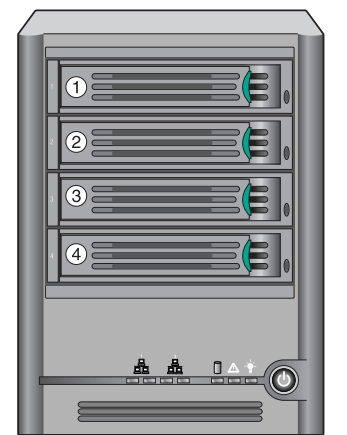
- 2 Position the SATA drive with circuit side facing down and connector end of hard drive facing rear of hard drive carrier. The connector end of hard drive should be flush with rear of hard drive carrier. Align holes in hard drive with holes in hard drive carrier. Attach hard drive to hard drive carrier with the four screws removed in Step 1.



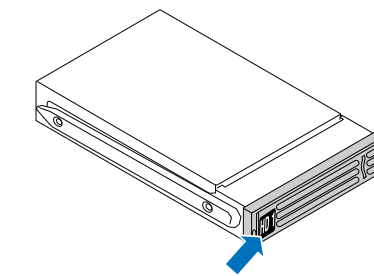
Note: It is recommended that you install all hard drives you intend to use before configuring the storage system. Unused hard drive carriers with baffles installed must remain in the system.

3 Affix Hard Drive Labels

Included with the Intel® Entry Storage System SS4000-E are labels for you to use to identify your hard drive carriers. Affix a label to each hard drive carrier that will be filled with a hard drive. See the illustration below for the recommended location to affix labels. Save unused labels for future use.



Drive Carrier Order



Warning

Safety information: Read all the safety and caution statements in this document before performing any of the instructions. Also, see the *Intel® Server Board and Server Chassis Safety Information* document at: <http://support.intel.com/support/motherboards/server/sb/cs-010770.htm> for complete safety information.

Installation and service: Installation and service of this product is to be performed only by qualified service personnel to avoid risk of injury from electrical shock or energy hazard.

Enclosure cover: In order to comply with applicable safety, emission, and thermal requirements, no covers should be removed and all bays must be fitted with drive carriers.

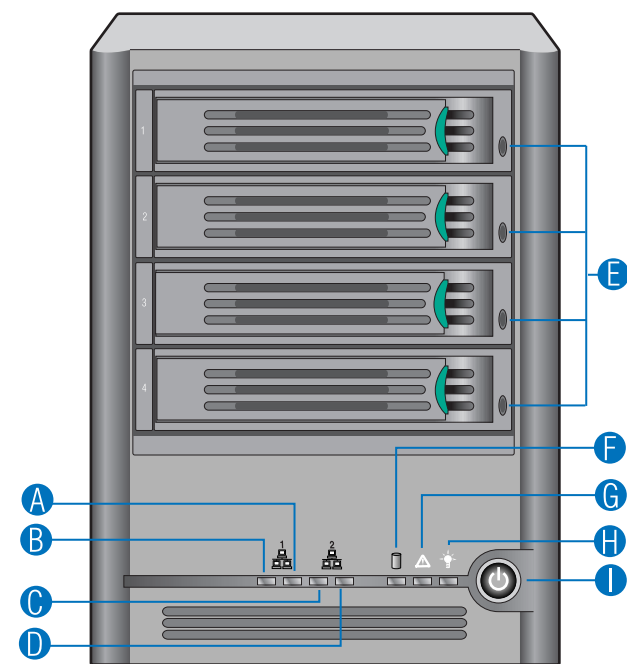
Shipping Information: Do not ship storage system with hard drives and hard drive carriers installed. Damage may occur to the system.

Caution

Electrostatic discharge: Observe normal Electrostatic Discharge (ESD) procedures during system integration to avoid possible damage to the server board and/or other components of the storage system.

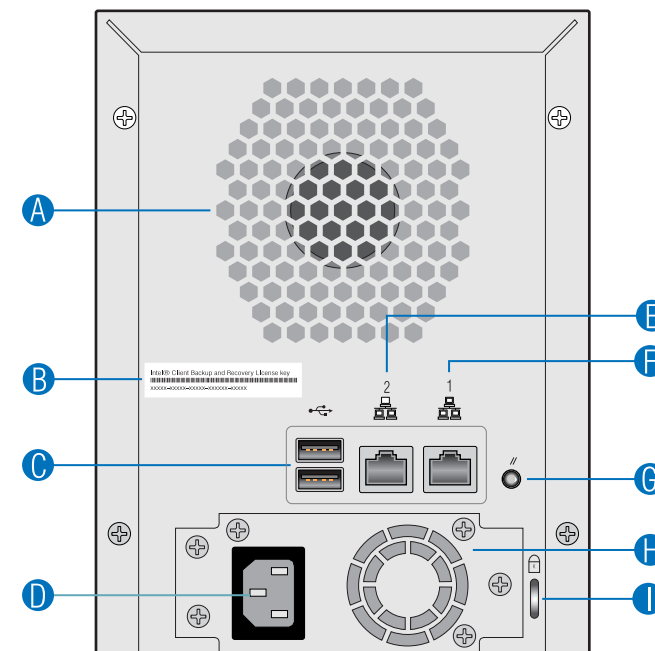
Storage system power: The power connection must always be removed before disconnecting the power supply module from the storage enclosure.

Front Panel



- | | |
|-------------------------|---------------------------|
| A NIC1 LAN Activity LED | E Hard Drive Activity LED |
| B NIC1 LAN Link LED | F Drive Status LED |
| C NIC2 LAN Link LED | G System Status LED |
| D NIC2 LAN Activity LED | H Power LED |
| | I Power Button |

Back Panel

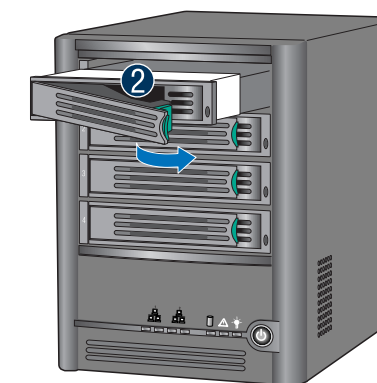


- | | |
|---|---------------------------|
| A System Fan | F Gigabit LAN Port (NIC1) |
| B Intel® Client Backup and Recovery License Key | G Reset Button* |
| C USB 2.0 Ports | H Power Supply Fan |
| D A/C Power In | I Security Lock |
| E Gigabit LAN Port (NIC2) | |
- * Resets password and network settings to defaults.

4 Install Hard Drive Carriers

Warning: Never change the bay position of a hard drive once the storage system has been configured and appropriate RAID levels have been applied to it. If a hard drive is removed, it must be re-installed in the same hard drive bay from which it was removed. Failure to do this may cause data on the hard drive to become inaccessible.

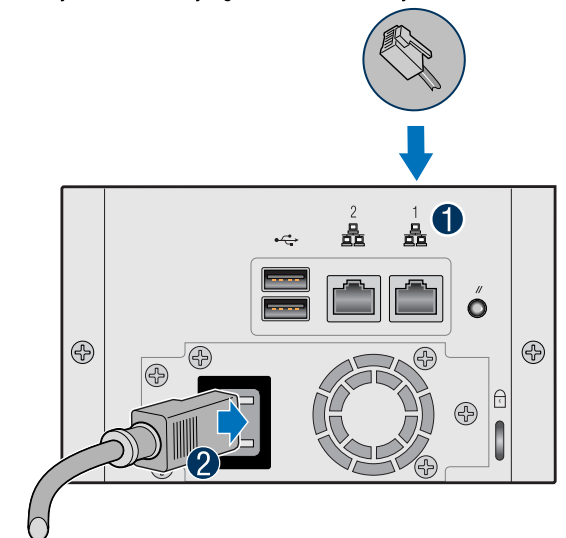
- 1 With lever in the fully open position, slide hard drive carrier into chassis. Do not push on lever until lever begins to close by itself.
- 2 Once the lever begins to latch, close lever to lock hard drive carrier into place.



Note: Make sure lever is in the fully open position before attempting to install hard drive carrier. Hard drive carrier must lock into position flush with the front of the system.

5 Plug in System

- 1 Connect an RJ-45 LAN cable from the client PC or your network switch to the Gigabit LAN Port 1 on your Intel® Entry Storage System SS4000-E. The Gigabit LAN Port will auto sense the speed and connection.
- 2 Connect the power cord to the back of the storage system.
- 3 Power up the system by pressing the power button on the front of the storage system. Wait until the system LED turns solid yellow before trying to connect to the system.



Accessories and Order Codes	
Power Supply	FXXSS4000EPS
System Fan	FXXSS4000ECFAN
Hard Drive Carriers (10 pack)	FXX10DVCARBK

A complete list of accessories and spares can be found at: www.intel.com/go/serverbuilder.

D39173-004

