

Intel[®] Storage System SSR316MJ2 Connectivity Guide

Application Note

Order Number:



C89522-001

Important Safety Instructions

Important Safety Instructions

Read all caution and safety statements in this document before performing any of the instructions. See *Intel Server Boards and Server Chassis Safety Information* at <http://support.intel.com/support/motherboards/server/safecert.htm>.

Wichtige Sicherheitshinweise

Lesen Sie zunächst sämtliche Warn- und Sicherheitshinweise in diesem Dokument, bevor Sie eine der Anweisungen ausführen. Beachten Sie hierzu auch die Sicherheitshinweise zu Intel-Serverplatinen und -Servergehäusen unter <http://support.intel.com/support/motherboards/server/safecert.htm>.

(Chinese language safety instructions to appear in Revision 1.0 of this guide)

Important Safety Instructions Consignes de sécurité

Lisez attention toutes les consignes de sécurité et les mises en garde indiquées dans ce document avant de suivre toute instruction. Consultez *Intel Server Boards and Server Chassis Safety Information* rendez-vous sur le site <http://support.intel.com/support/motherboards/server/safecert.htm>.

Instrucciones de seguridad importantes

Lea todas las declaraciones de seguridad y precaución de este documento antes de realizar cualquiera de las instrucciones. Vea *Intel Server Boards and Server Chassis Safety Information* en <http://support.intel.com/support/motherboards/server/safecert.htm>.



WARNINGS

Storage system power on/off: The push-button on/off power switch on the front panel of the storage system does not turn off the AC power. To remove AC power from the storage system, you must unplug the AC power cord from either the power supply or wall outlet.

Hazardous conditions—power supply: Hazardous voltage, current, and energy levels are present inside the power supply enclosure. There are no user-serviceable parts inside the power supply; servicing should only be done by technically qualified personnel.

Hazardous conditions—devices and cables: Hazardous electrical conditions may be present on power, telephone, and communication cables. Turn off the storage system and disconnect telecommunications systems, networks, modems, and the power cord attached to the storage system before opening it. Failure to do so can result in personal injury or equipment damage.

Avoid injury: Lifting the storage system chassis and attaching it to the rack is a two-person job. If needed, use an appropriate lifting device. A fully loaded Intel® Storage System SSR316MJ2 weighs approximately 31.8 kg (70 lbs.).



CAUTIONS

Temperature: The operating temperature of the storage system, when installed in an equipment rack, must not go below 5 °C (41 °F) or rise above 35 °C (95 °F). Extreme fluctuations in temperature can cause a variety of problems in the storage system.

Ventilation: The equipment rack must provide sufficient airflow to the front of the storage system to maintain proper cooling. It must also include ventilation sufficient to exhaust a maximum of 1200 BTUs per hour for a fully loaded Intel® Storage System SSR316MJ2.

It is important to note that this is the maximum, and a minimum or typical system in your configuration.

Disclaimer

Information in this document is provided in connection with Intel® products. No license, express or implied, by estoppel or otherwise, to any intellectual property rights is granted by this document. Except as provided in Intel's Terms and Conditions of Sale for such products, Intel assumes no liability whatsoever, and Intel disclaims any express or implied warranty, relating to sale and/or use of Intel products including liability or warranties relating to fitness for a particular purpose, merchantability, or infringement of any patent, copyright or other intellectual property right. Intel products are not designed, intended or authorized for use in any medical, life saving, or life sustaining applications or for any other application in which the failure of the Intel product could create a situation where personal injury or death may occur. Intel may make changes to specifications and product descriptions at any time, without notice.

Intel is a registered trademark of Intel Corporation or its subsidiaries in the United States and other countries.

* Other names and brands may be claimed as the property of others.

Copyright © 2004 Intel Corporation. All Rights Reserved.

Contents

- About the Connectivity Guide Application Note 5**
- SSR316MJ2 Ethernet Connectivity 6**
 - Required Equipment (for direct attach) 6
 - Optional Equipment (for switched configurations)..... 6
 - Ethernet Direct Attach System 6
 - Ethernet Switched System 7
- SSR316MJ2 FibreChannel Connectivity 8**
 - Required Equipment (for direct attach) 8
 - Optional Equipment (for switched configurations)..... 8
 - FibreChannel Direct Attach system..... 9
 - FibreChannel Switched system..... 10
 - FibreChannel Switched / Ethernet Managed Backend system 11

About the Connectivity Guide Application Note

This document describes how to install your Intel® Storage System SSR316MJ2 into several direct attached and networked SAN configurations.

SSR316MJ2 Ethernet Connectivity

Required Equipment (for direct attach)

- CAT 5 or better Ethernet cable with RJ45 connectors installed.

Optional Equipment (for switched configurations)

- Ethernet multi-port switch.
- Dual Ethernet Network Interface Card. This NIC should be installed in Slot 1 only.
- Quad Ethernet Network Interface Card. This NIC should be installed in Slot 1 only.

Ethernet Direct Attach System

- A. Configure the SSR316MJ2 system to one or multiple Server Clients as shown below using the two SSR316MJ2 integrated NIC ports¹. See Figure 1.
- B. Install the optional NIC card in SSR316MJ2 expansion slot 1² (if additional NIC ports are desired).

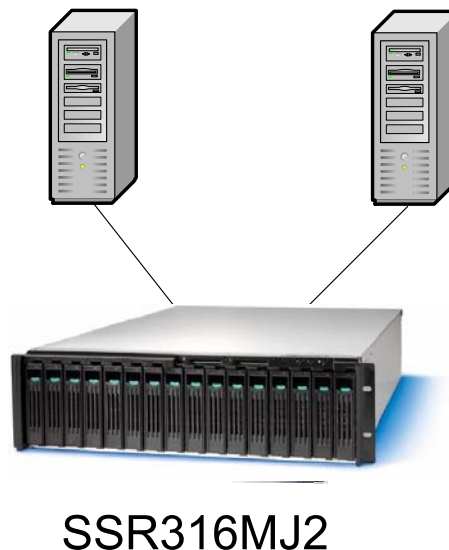


Figure 1. Ethernet Direct Attach

Ethernet Switched System

- C. Configure the SSR316MJ2 system to one or multiple Server Clients as shown below using the two SSR316MJ2 integrated NIC ports¹ and Ethernet multi-port switch. See Figure 2.
- D. Install the optional NIC card in SSR316MJ2 expansion slot 1² (if additional NIC ports are desired).

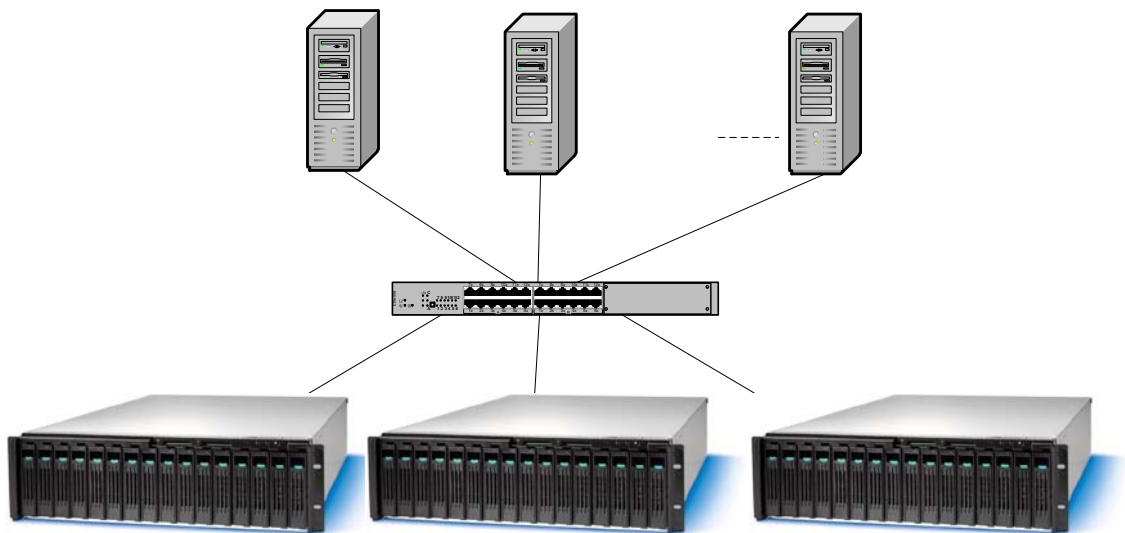


Figure 2. Ethernet Switched configuration

Server
Client

SSR316MJ2 FibreChannel Connectivity

Required Equipment (for direct attach)

- Optical Fibre cable capable of supporting 2 Gb/s FibreChannel.
- Dual FibreChannel 2 Gb/s Host Bus Adapter⁴.

Optional Equipment (for switched configurations)

- Dual port FibreChannel 2 Gb/s Host Bus Adapter⁴. This HBA should be installed in Slot 1 only.
- Quad port FibreChannel 2 Gb/s Host Bus Adapter⁴. This HBA should be installed in Slot 1 only.
- FibreChannel 2 Gb/s multi-port switch⁴.
- Ethernet multi-port switch – for managing the backend to configure storage arrays and RAID configurations
- CAT 5 or better Ethernet cable with RJ45 connectors installed.

FibreChannel Direct Attach system

- A. Install FibreChannel HBA in SSR316MJ2 expansion slot 1².
- B. Configure the SSR316MJ2 system to one or multiple Server Clients as shown below. See Figure 3.

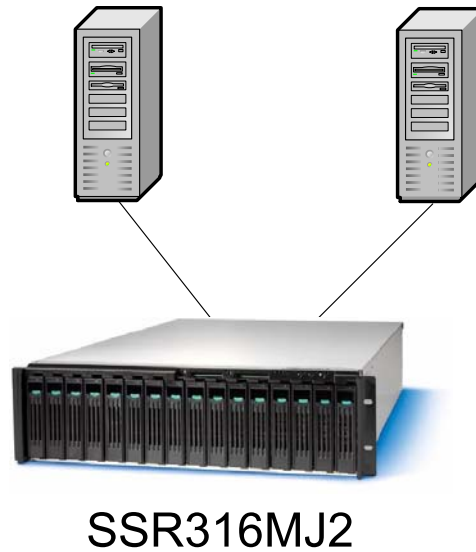


Figure 3. FibreChannel Direct Attach

Server
Client

FibreChannel Switched system

- C. Install FibreChannel HBA in SSR316MJ2 expansion slot 1².
- D. Configure the SSR316MJ2 system to one or multiple Server Clients as shown below³. See Figure 4.

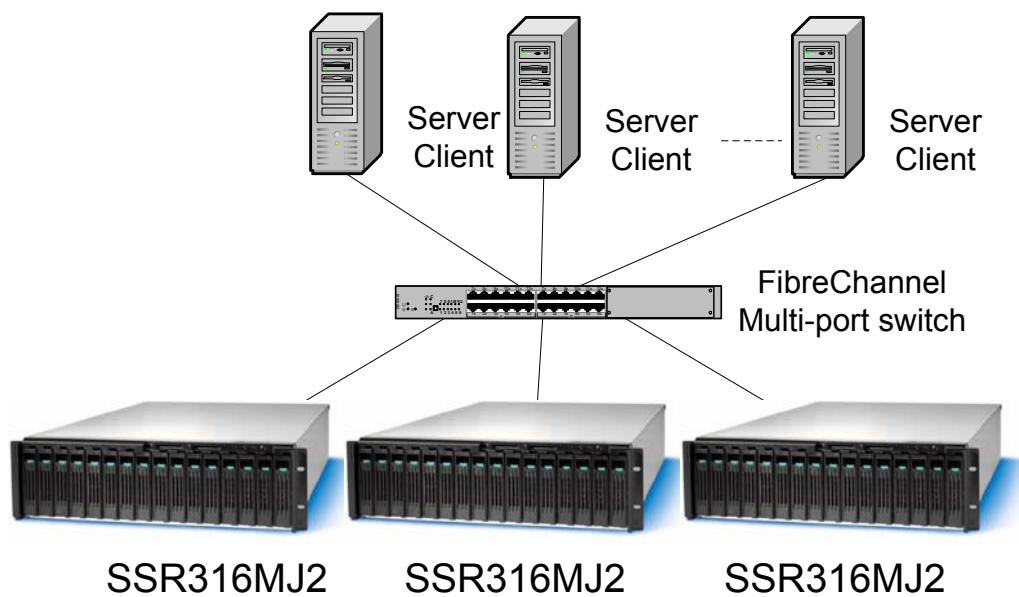


Figure 4. FibreChannel switched configuration

FibreChannel Switched / Ethernet Managed Backend system

- E. Install FibreChannel HBA in SSR316MJ2 expansion slot 1².
- F. Configure the SSR316MJ2 system to one or multiple Server Clients as shown below³. See Figure 5.

