



# Intel® System Management Software

## Upgrade Guide

---

*March 2009*

## Legal Statements

INFORMATION IN THIS DOCUMENT IS PROVIDED IN CONNECTION WITH INTEL® PRODUCTS FOR THE PURPOSE OF SUPPORTING INTEL DEVELOPED SERVER BOARDS AND SYSTEMS. NO LICENSE, EXPRESS OR IMPLIED, BY ESTOPPEL OR OTHERWISE, TO ANY INTELLECTUAL PROPERTY RIGHTS IS GRANTED BY THIS DOCUMENT. EXCEPT AS PROVIDED IN INTEL'S TERMS AND CONDITIONS OF SALE FOR SUCH PRODUCTS, INTEL ASSUMES NO LIABILITY WHATSOEVER, AND INTEL DISCLAIMS ANY EXPRESS OR IMPLIED WARRANTY, RELATING TO SALE AND/OR USE OF INTEL PRODUCTS INCLUDING LIABILITY OR WARRANTIES RELATING TO FITNESS FOR A PARTICULAR PURPOSE, MERCHANTABILITY, OR INFRINGEMENT OF ANY PATENT, COPYRIGHT OR OTHER INTELLECTUAL PROPERTY RIGHT.

UNLESS OTHERWISE AGREED IN WRITING BY INTEL, THE INTEL PRODUCTS ARE NOT DESIGNED NOR INTENDED FOR ANY APPLICATION IN WHICH THE FAILURE OF THE INTEL PRODUCT COULD CREATE A SITUATION WHERE PERSONAL INJURY OR DEATH MAY OCCUR.

Intel may make changes to specifications and product descriptions at any time, without notice. Designers must not rely on the absence or characteristics of any features or instructions marked "reserved" or "undefined." Intel reserves these for future definition and shall have no responsibility whatsoever for conflicts or incompatibilities arising from future changes to them. The information here is subject to change without notice. Do not finalize a design with this information.

The products described in this document may contain design defects or errors known as errata which may cause the product to deviate from published specifications. Current characterized errata are available on request.

Contact your local Intel sales office or your distributor to obtain the latest specifications and before placing your product order.

Intel is a trademark of Intel Corporation in the U.S. and other countries.

Microsoft, Windows, Windows Server, Active Directory, and Vista are trademarks, or registered trademarks of Microsoft® Corporation in the United States and/or other countries.

\* Other names and brands may be claimed as the property of others.

Copyright © 2007–2009 Intel Corporation. All rights reserved.

# Contents

---

<b>1</b>	<b>Introduction</b> .....	<b>5</b>
1.1	Document Scope.....	5
1.2	Related Documents .....	5
1.3	Terminology.....	6
<b>2</b>	<b>Upgrading Intel® System Management Software</b> .....	<b>7</b>
2.1	Intel® System Management Software Components.....	7
2.2	System Management Upgrade Scenarios .....	8
2.2.1	Scenario 1: SCE* Server with Internet Connection .....	8
2.2.2	Scenario 2: Server without Internet Connection .....	8
2.2.3	Scenario 3: SCE* Server and Multiple Nodes and Consoles are Configured.....	9
2.3	Upgrading Intel® System Management Software from About System Management Software .....	10
2.4	Upgrading Intel® System Management Software when your server is not connected to the Internet.....	12
2.5	Upgrading the Management Packs from Microsoft® System Center Essentials 2007* .....	14



# 1 Introduction

---

The Intel® System Management Software is a server management solution providing remote monitoring, configuration, software distribution, updates, and trouble-shooting management features.

Intel frequently enhances the features of the Intel® System Management Software. The Intel® System Management Software CD included along with server platforms may not contain the most recent release. In order to make those upgrades available to you, we release newer versions of Intel® SMS.

## 1.1 Document Scope

The purpose of this document is to provide you information for the upgrade of features of the Intel® SMS. It discusses the options available to you for upgrading the Intel® Server Management packs and Intel® Server Management Utilities.

It helps you upgrade to the latest release posted in the Intel support site - <http://support.intel.com> - such that you get a complete benefit of the Intel® SMS. It also explains the various components of the Intel® System Management Software available for download. In addition, it discusses the multiple upgrade options available to you to move to the current latest version.

## 1.2 Related Documents

The following table lists the related documents

Document	Source/Reference Number
<i>Intel® Server Management Pack User guide</i>	Available in User Guide folder in the media
<i>Intel® Modular Server Management Pack User Guide</i>	Available in User Guide folder in the media
<i>Intel® AMT Management Pack User Guide</i>	Available in User Guide folder in the media

## 1.3 Terminology

The following table lists the terminology used in this document and the description:

Term	Description
Agent	Agent is the Software Development Kit Layer for Extracting the Server Hardware Information from Base Board Management Controller and System Management Basic Input Output System (BIOS)
Intel® AMT	Intel® Active Management Technology
Management Pack	It is a Plug-in module in system center Essentials software that has all the definitions and configurations of the Intel® Server Hardware Components
Upgrade	Enhanced versions of Intel® System Management Software with new platform support or new features are uploaded to Intel Website. Users installing Intel® System Management Software from a CD can upgrade to a new version using multiple ways. Intel recommends all users to upgrade to a new versions
SCE*	Microsoft® System Centre Essentials*

## 2 Upgrading Intel® System Management Software

This section discusses the process for upgrading the Intel® System Management Software.

### 2.1 Intel® System Management Software Components

Intel® System Management Software contains multiple components. All components shipped as part of media (CD/DVD) can be individually upgraded to advanced versions using the various methods described in this document. In order to get the enhanced current capability of your Intel® SMS, it is advised that you upgrade to the most recent version released by Intel from time to time.

**NOTE:** While upgrading to the latest version, you must upgrade all the Management Server and Managed Nodes to the latest versions to be in synch with this version. This is required to ensure that SMS functions completely. Else, issues such as inability to discover a managed node, managed server not capturing alerts generated in nodes, and so on will occur.

For the name of the components and their interconnections, please refer the following table:

SI #.	Software name	Description	Relationship with other components
1.	Intel® Server Management Pack Agent	Contains all the drivers and agents required for server Management. This component is installed on Managed Node Server Systems. It provides critical monitoring data to the management Server. This component is tightly connected the Intel® Server Hardware Management Pack. This Agent is provided differently for Windows* and Linux* OS	Installed on the managed node, updating this component would require updating of Intel® Server Hardware Management Pack.
2.	Intel® Server Hardware Management Pack	Microsoft System Centre Essential Plug-in component to monitor chassis and baseboard sensors such as temperature, fan status, and voltage levels.	Installed on the management Server, Upgrading this component would require upgrading of Agent (See SI. # 1)
3.	Intel® Active System Console	Component to monitor the server status using a web console.	It can be installed on any node Upgrading this component would require upgrading of Agent (See SI. # 1)
4.	Intel® Modular Server Management Pack	To Manage the Modular Server	Installed on the management Server. No dependency on other SMS

SI #.	Software name	Description	Relationship with other components
			components while upgrading a web version
5.	Intel® AMT Management Pack	Manage AMT enabled Intel Desktop systems	Installed on the management Server. No dependency on other SMS components while upgrading to a web version
6.	Intel® Server Management Utilities	Contains Intel® One Boot Flash Update, SNMP Sub Agent, and Command line interface to manage servers.	It can be installed on any node. No dependency on other SMS components while upgrading to a web version.

## 2.2 System Management Upgrade Scenarios

For easy installation of the upgradeable components, the IT environment on which the Intel® System Management Software is installed needs to have Internet connection. An isolated network environment would necessitate a manual installation/upgrade process to be carried out.

Intel® Server Management Pack Agent for Linux\* OS has to be installed on Linux\* Managed Node Servers by copying the installation binaries onto Linux\* Server and executing the appropriate command as mentioned in the Release Notes. The installation binaries are available in the DVD in the software\hwmgt\linuxagent folder. The installation binaries are also available in %ProgramFiles/Intel/NGSMS/linuxagent folder after installing Intel® Server Management Pack install in SCE\* Console.

### 2.2.1 Scenario 1: SCE\* Server with Internet Connection

Sl. #	Upgrade Option	Component Supported	Comments
1	Microsoft® System Centre Essentials* update option	Download and update management packs and agent components	See Section 2.5 for details.
2	Using About System Management Software	Intel® Active System Console Intel® Server Management Utilities	See section 2.3 for detailed steps.

### 2.2.2 Scenario 2: Server without Internet Connection

Refer to section 2.4 for more information.



## 2.2.3 Scenario 3: SCE\* Server and Multiple Nodes and Consoles are Configured

When your SCE server is configured with multiple nodes and consoles always update the latest Intel Server Management Agent component in all the nodes and consoles. Follow the below steps to upgrade all the managed nodes and console.

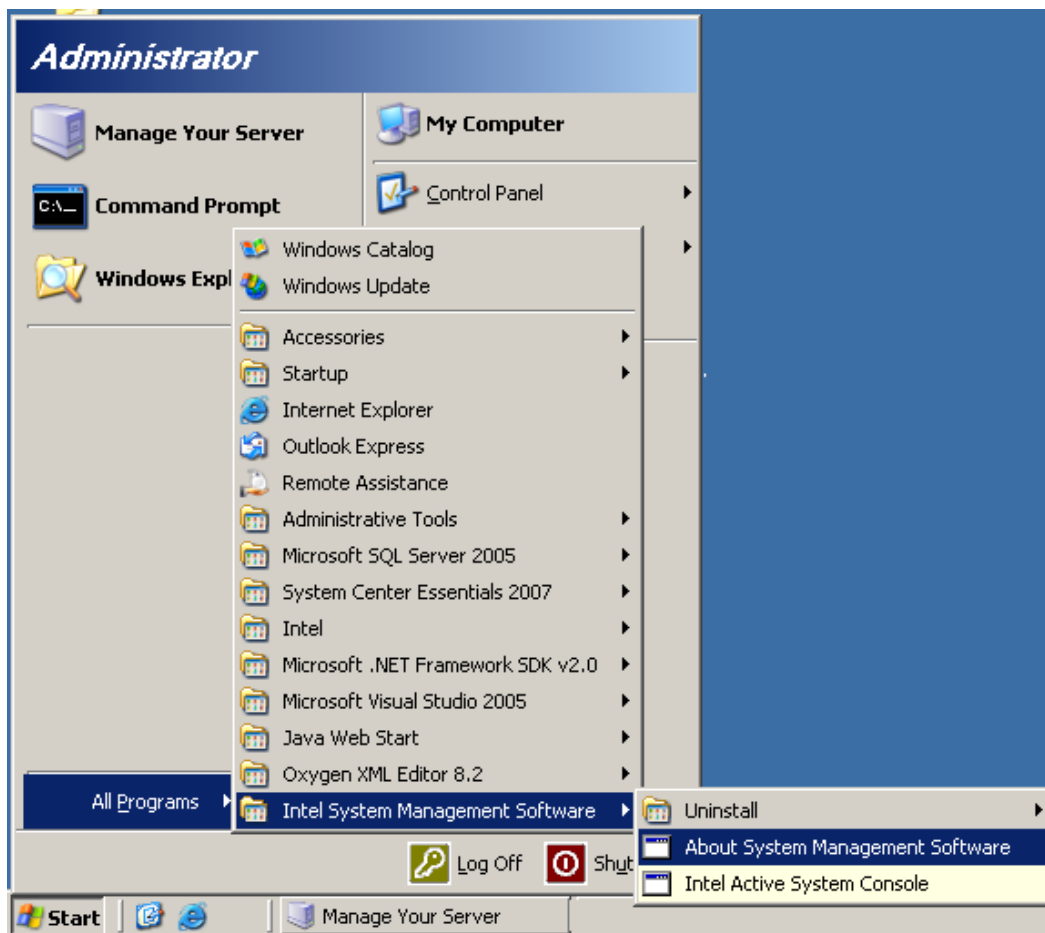
- Download the Latest components to your SCE server
- Deploy the latest components with the SCE Software deployment wizard and make sure that all the components are compatible to the SCE server.

**Caution:** Do not try to only upgrade the Agent components in the Managed node or SCE\* Console.

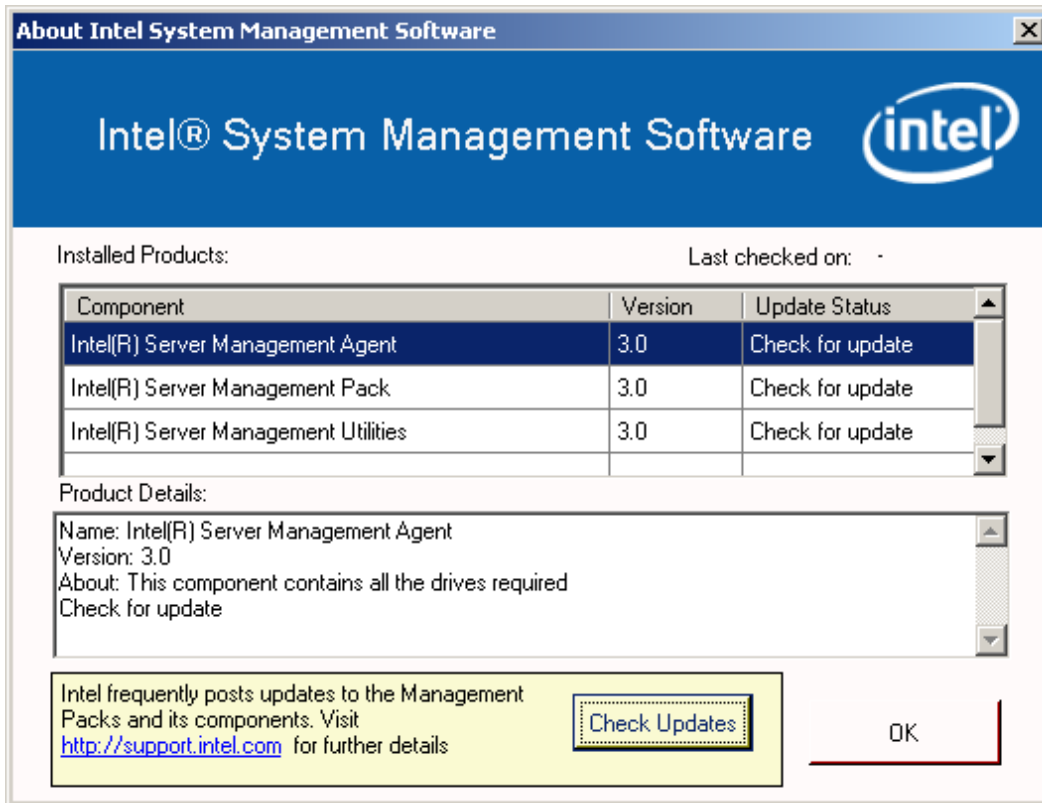
## 2.3 Upgrading Intel® System Management Software from About System Management Software

This method of upgrade is primarily targeted for components that do not run within the Microsoft\* SCE environment (such as Intel® Active System Console, Intel® Server Management Utilities, Linux\* Utilities and so on). However, it can also be used to upgrade other components.

1. To launch the **About System Management Software** from the Start menu, click **Start > All Programs > Intel System Management Software > About Server Management Software**.



2. If your server is connected to the Internet, click the **Check Updates** button.



The **About System Management Software** checks if any updates are available for download. The application also shows the status of each application as shown in following table:

Update Status	Description
Check for update	Latest update is not checked yet
No update available	Installed version is latest.
Updates are available	Download and install the latest available software packages available in the Intel Support Website at <a href="http://support.intel.com">http://support.intel.com</a> .
Contact Customer Support	Latest version is available. In order to upgrade, contact Intel Customer support. NOTE: Direct upgrade not possible.

3. Click software that are out of date, copy the link, and download the software component to install.

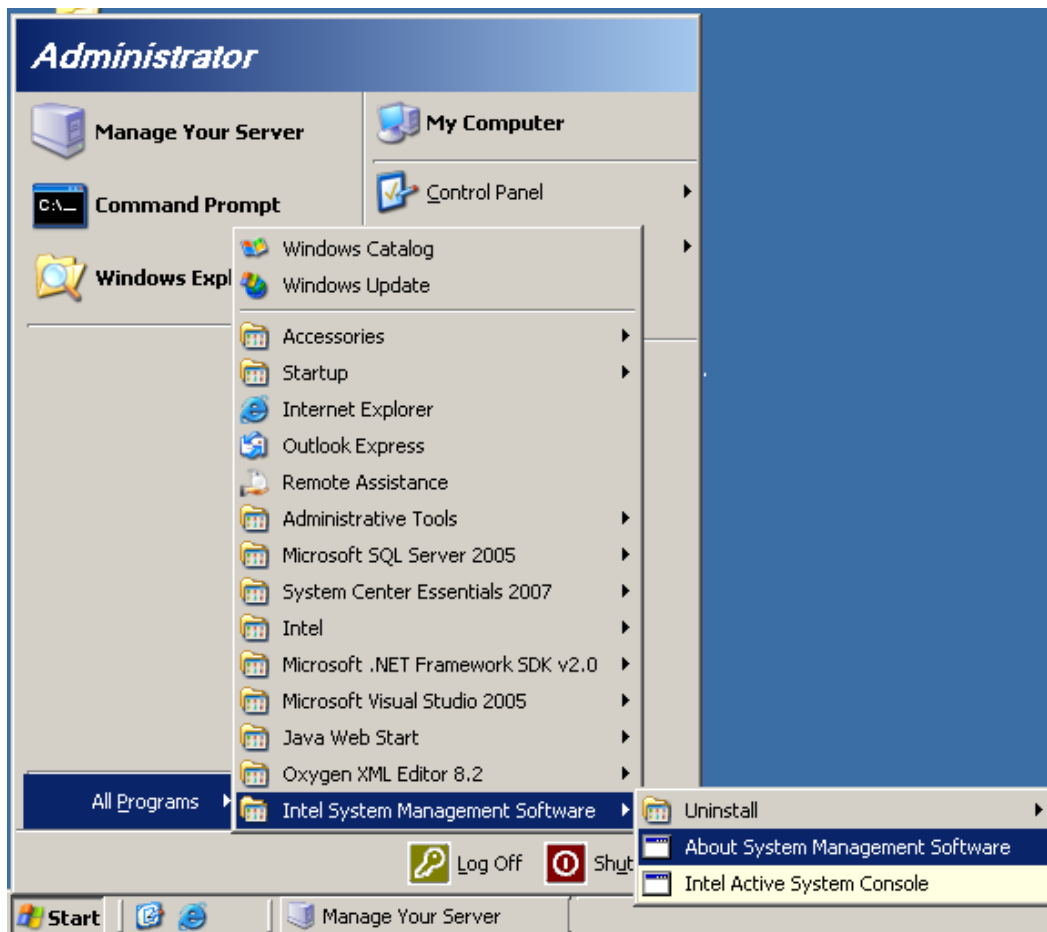
## 2.4 Upgrading Intel® System Management Software when your server is not connected to the Internet

This section applies to the following scenarios:

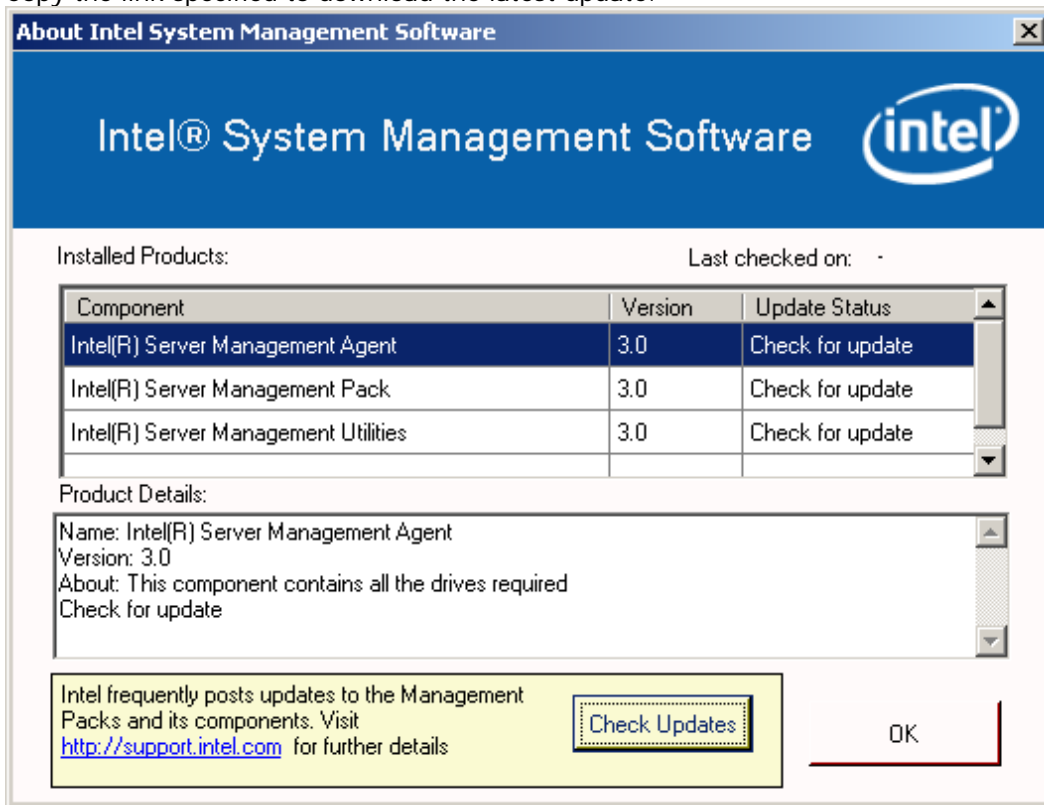
- Servers with all required Management Packs installed with or without System Center Essentials\*

AND

- Your system not connected to Internet
1. To launch the **About System Management Software** from the Start menu, click **Start > All Programs > Intel® System Management Software > About Server Management Software**.



2. **About System Management Software** provides the list of packages installed in the server. Copy the link specified to download the latest update.



3. Open the displayed URL on another system which is connected to Internet. Save the updates to a transferable media such as USB Drive or CD.
4. Copy and install all the updates to the servers which are not connected to the Internet.

**NOTE:** Please refer the *Intel® System Management Software User Guide* for details on how to upgrade the component.

## 2.5 Upgrading the Management Packs from Microsoft® System Center Essentials 2007\*

This section applies to servers with Microsoft\* System Center Essentials 2007 console and all required Management Packs installed.

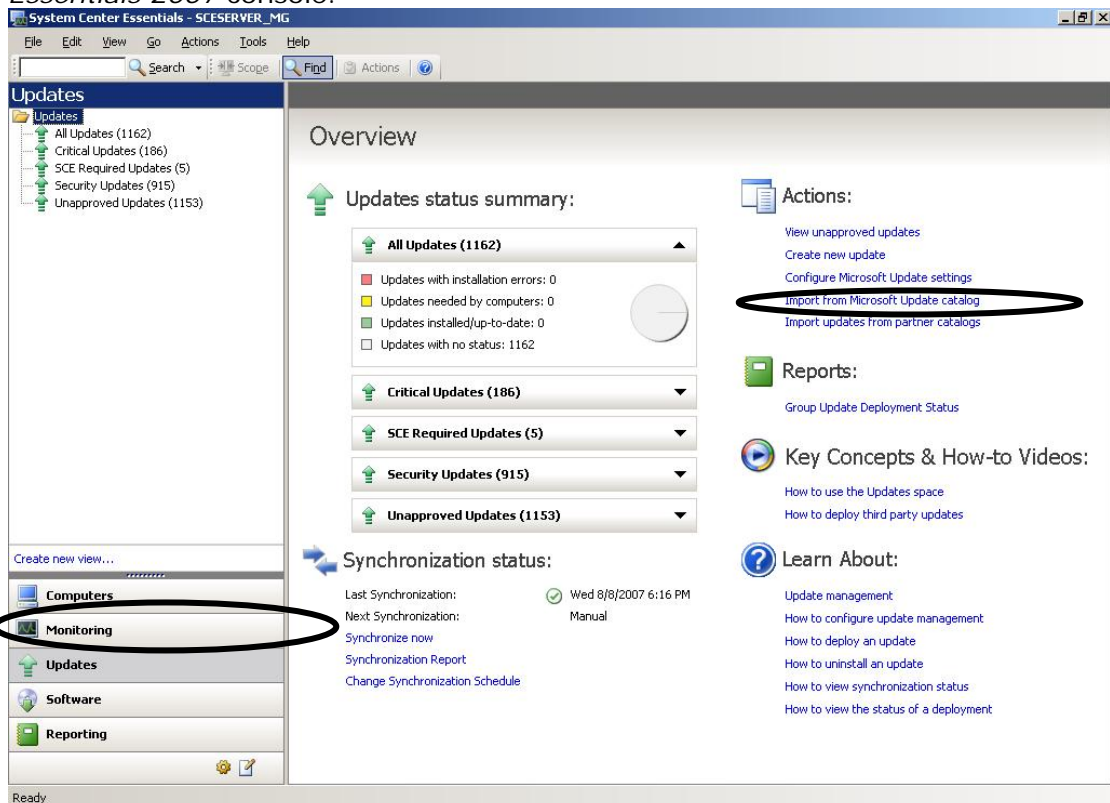
1. Launch the Microsoft\* System Center Essentials 2007 console.
2. Upgrade *Microsoft\* System Center Essentials* to **Service Pack 1**.

If you used the Intel® System Management Software 2.5 or greater CD or DVD to install *Microsoft\* System Center Essentials*, SP1 was loaded at the time of the install.

If not, use the Microsoft Upgrade functionality to upgrade *Microsoft\* System Center Essentials* to SP1

3. Use the *Microsoft\* System Center Essentials 2007* Partner Updates feature to bring the Intel Management Packs to full functionality with the latest releases. **Note:** An internet connection is required to use this feature.

a) Click the **Updates** tab in the lower left corner of the *Microsoft\* System Center Essentials 2007* console.



b) In the upper right hand section of the **Updates Overview** screen, click **Import updates from partner catalogs**.

A wizard will display to assist you with the rest of the update.

Click **Next** to begin, then select "Intel Corporation" from the catalog list, click **Next** and then click the **Import** button to download all updates from Intel.

Once downloaded, the updates must be "approved" for deployment to the computer group you select. Intel recommends that you select *All Servers* for your deployment.

If the update is not needed on a specific server no action will be taken on that server.

**NOTE:** The update can take up to 24 hours to apply on each of the systems. Once the update has been applied to your systems, they will be fully functional.