

Intel® Pocket Concert™ Audio Player

Quick Start Guide



Player in the optional Intel® Audio Stereo Dock

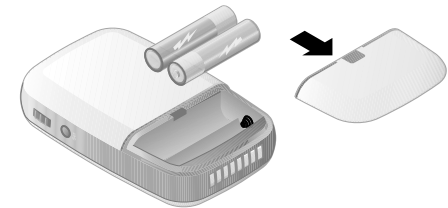


Setting Up Your Player

NOTE: Install the Player software before connecting the Player to your computer. Connecting the Player to your computer before successfully installing the Player software could cause the Player to operate incorrectly.

Installing the Batteries

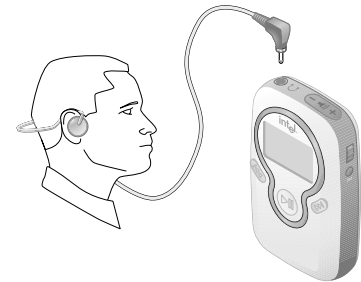
1. Press the blue tab on the **battery cover** and slide it away from the Player.
2. Insert the batteries. Ensure that the batteries are oriented correctly as shown.
3. Replace the **battery cover**.



CAUTION: Use only AAA non-rechargeable alkaline batteries, *or* AAA rechargeable NiMH batteries like those supplied in the optional Accessory Kit. Other battery types could damage your Player.

Connecting the Headphones

- Connect the headphone cord to the **headphone jack** on the Intel® Pocket Concert™ Audio Player.
The headphones provided with your Player are designed to be worn as shown, with the headband positioned around the back of your head.



Listening to the Guided Tour

Your Player comes with a pre-loaded audio file entitled *Guided Tour* introducing you to the Player's features and capabilities. To listen to the *Guided Tour*.

1. Move the **power/lock switch** to the *On* position. (see the *Player Controls* section for information)
2. If necessary, use the **scroll wheel** to select *Guided Tour*.
3. Press the **play/pause** button.

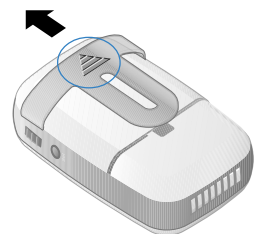
Connecting the Belt Clip

- Connect the supplied **belt clip** to the back of the Player one side at a time as shown.



Removing the Belt Clip

- Press the arrow on the back of the **belt clip** against the Player and slide the **belt clip** up towards the top of the Player.



Technical Information

System Requirements

To organize and transfer digital audio files to the Intel® Pocket Concert™ Audio Player, your computer needs:

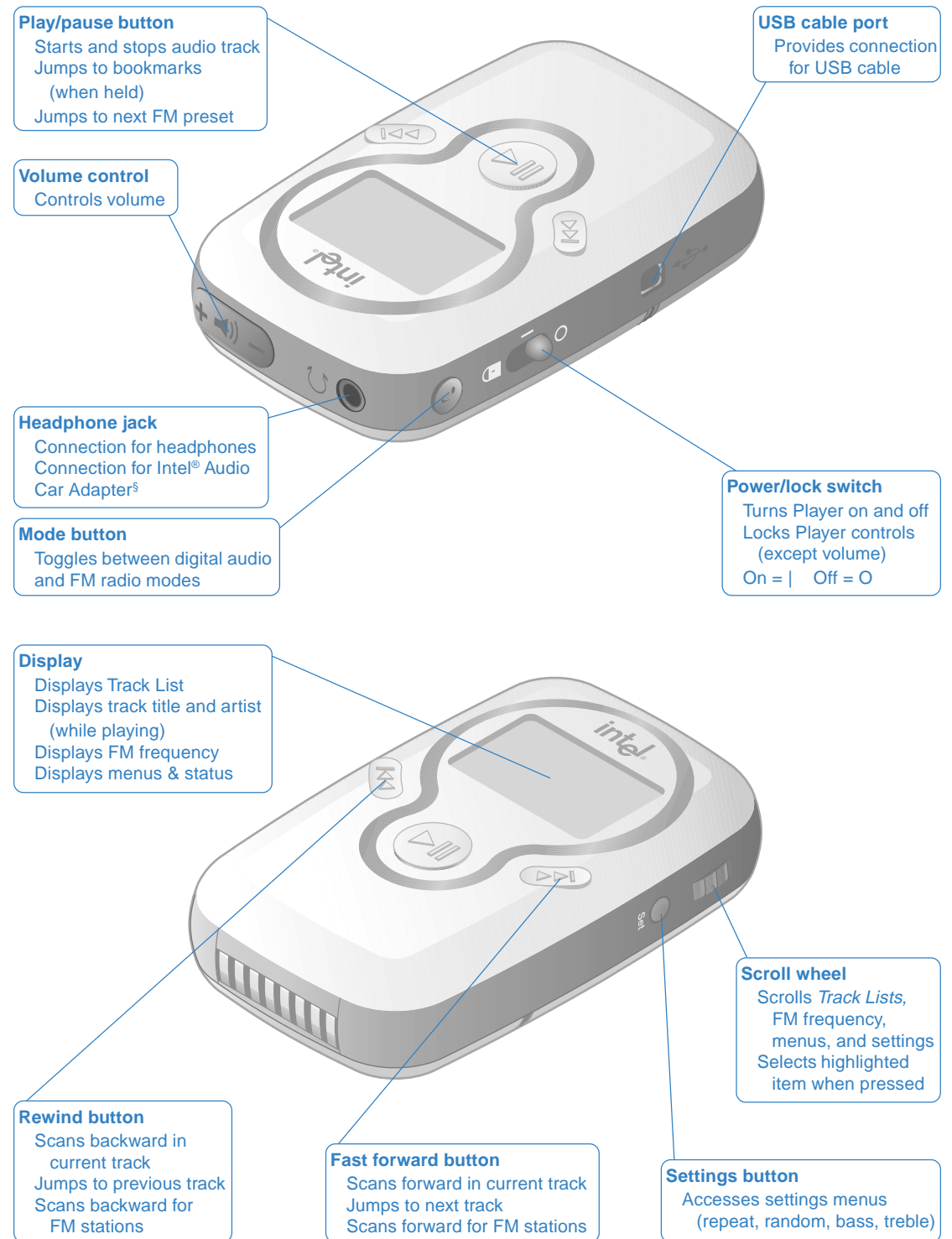
- Microsoft Windows* 98, Windows 98SE, Windows Me, or Windows 2000
- 200 MHz Intel® Pentium® processor or faster
- 4x or faster CD-ROM drive
- 800x600 screen resolution or better w/16-bit color
- USB port
- 32 MB of RAM (64 MB recommended)
- 155 MB minimum free hard disk space
 - 40 MB for application software
 - 115 MB for Intel® Audio Sampler files (optional)
- Additional hard disk space for additional digital audio files

Specifications

Dimensions	97 mm x 62 mm x 24 mm
Weight	97 g (without batteries and with belt clip)
Battery type	2 AAA non-rechargeable alkaline 2 AAA rechargeable nickel metal hydride (NiMH) [§]
Battery life	Up to 10 hrs (digital audio) or 16 hours (FM radio)
Memory	Up to 128 MB built-in flash memory
Interface	USB port
Digital Audio	
Maximum output at clipping	620 mv rms
Maximum output	11 mW (@ 0.1% typical total harmonic distortion)
Frequency response	20 to 20,000 Hz (40 Hz to 15.5 kHz @ + 0.0 - 1.9 dB) (20 Hz to 15.5 kHz @ + 0.0 - 6.0 dB)
Equalization	Bass Control: -4.5 dB to +12 dB @ 100 Hz in 17 steps Treble Control: -4.5 dB to + 8 dB @ 10 kHz in 17 steps
Total harmonic distortion + noise	0.04% @ 1 kHz
Audio codec support	MP3 and Windows Media™ formatted digital audio files (additional Codec support available in the future)
FM Receiver	
Tuning range	88 MHz - 108 MHz
Tuning steps	200 kHz
Total harmonic distortion + noise	-50 dB @ 1 kHz (typical)
Intel® Audio Stereo Dock[§]	
Electrical input	110 VAC (volts alternating current)
Dimensions	120 mm x 95 mm x 39 mm

[§]Requires optional Intel® Audio Accessory Kit

Player Controls



[§]Requires optional Intel® Audio Accessory Kit

Intel® Audio Accessory Kit

The optional Intel® Audio Accessory Kit expands the power of your Intel® Pocket Concert™ Audio Player.

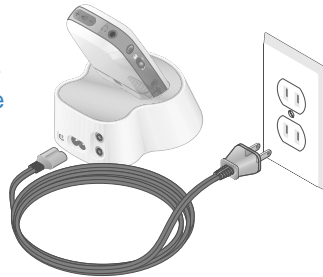
- The Intel® Audio Stereo Dock connects the Player to a stereo or speakers and charges NiMH batteries.
 - Use the RCA stereo cable to connect to your home stereo.
 - Use the RCA Y speaker cable to connect to your powered speakers.
 - Use the AC power cord to connect to an electrical outlet.
- The rechargeable NiMH batteries charge with the Player in the Stereo Dock. (**charge fully before use**)
- The Intel® Audio Car Adapter connects your Player to your car stereo cassette deck.
- The Intel® Audio Carrying Case holds your Player and other small items.

While Your Player is in the Stereo Dock

- It can be connected to your computer, an AC power outlet, and your powered speakers or stereo.
- It draws power from either the USB or electrical connection rather than using NiMH battery power.
- It delivers fixed volume level audio to your home stereo or powered speakers.
- The FM radio only works when the headphones are plugged into the **headphone jack**.

Charging NiMH Batteries

1. Connect the AC power cord to the Stereo Dock and an electrical outlet.
2. Ensure that your Player contains AAA rechargeable NiMH batteries like those provided in the optional Accessory Kit.
3. Place your Player in the Stereo Dock. The light on the front of the Stereo Dock blinks while the batteries are charging and glows continuously when charging is complete.



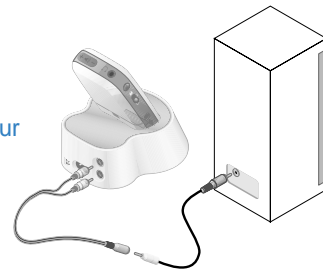
Connecting to a Stereo

1. Connect the included RCA stereo cable to your Stereo Dock.
2. Connect the RCA stereo cable to your stereo.
(Refer to your stereo manual for details about using auxiliary inputs.)
3. Place the Player in the Stereo Dock and turn on the Player.



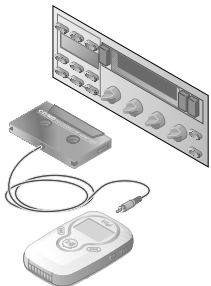
Connecting to Powered Speakers

1. Connect the included RCA Y speaker cable to your Stereo Dock.
2. Connect the RCA Y speaker cable to the source cable supplied with your powered speakers. (Refer to your speaker manual for details about connecting to audio devices.)
3. Place the Player in the Stereo Dock and turn on the Player.



Using the Car Adapter

1. Minimize the Player's volume level.
2. Connect the Car Adapter's cable to your Player's **headphone jack**.
3. Ensure that the cable is correctly oriented for use with your car's cassette deck.
4. With the Car Adapter showing "This Side Up" on top, insert it into your car's cassette deck.
5. Turn on the Player.



Safety

Volume Level

To establish a safe listening volume, first set the **volume control** on your Intel® Pocket Concert™ Audio Player to the lowest level (indicated by a single bar in the volume indicator). Then slowly increase the volume until you can hear it comfortably, clearly, and without distortion. Once you have set the volume level, leave it there for comfortable listening.

WARNING: Using the Player at a volume higher than a comfortable sound level may lead to temporary or permanent hearing loss. Follow the volume level recommendations above to avoid exposure to excessive sound levels. Note that your comfortable sound level may be higher than normal due to surrounding noise levels. To avoid risk of hearing loss, use the Player at the comfortable sound level that you established in quiet surroundings at all times.

Operating Vehicles

Do not use your Player and headphones while operating a motorized vehicle or riding a bicycle. While driving, use the Intel® Audio Car Adapter[§] with your car's cassette deck.

Electrical Safety

While your Player is designed for rigorous use, it is not waterproof. Use caution when using your Player in any damp or wet environments, as water leakage into the Player may cause failure.

The Intel® Audio Carrying Case[§] is not waterproof and does not protect the Player from damage when dropped.

WARNING: To prevent fire or shock hazard, do not expose this equipment to rain or moisture.

Batteries

CAUTION: Use only AAA non-rechargeable alkaline batteries, *or* AAA rechargeable NiMH batteries like those supplied in the optional Accessory Kit. Other battery types could damage your Player.

[§]Requires optional Intel® Audio Accessory Kit

Setting Up Your Computer

What's on the CD-ROM

Use the software provided with your Intel® Pocket Concert™ Audio Player to create, organize, and enjoy your own digital audio library.

- **Intel® Audio Manager**
Use the Audio Manager to quickly and easily transfer digital audio files to your Player.
 - **MusicMatch Jukebox* (Plus Version)**
Use MusicMatch Jukebox to organize a digital audio library, rip and encode your personal CD collection for use on your Player, and burn CDs with your CD-R drive.
- Complete online documentation is supplied with each of these software programs.
- **Intel® Audio Sampler**
The Audio Sampler is a diverse collection of digital audio files that can be loaded onto your computer during installation.
To read more about the Audio Sampler: insert the Player's installation CD-ROM, click **Browse the CD**, double-click **Music**, double-click **Intel Audio Sampler**, double-click **sampler.htm**.

Installing the Software

To install the software provided with your Player:

1. Insert the included CD-ROM into your CD-ROM drive.
If the install doesn't start automatically: click the **Start** menu and then click **Run**.
In the **Run** dialog box, type: "[x]:\setup.exe" where [x] is the letter of your computer's CD-ROM drive.
2. Follow the on-screen prompts. When requested, enter the *MusicMatch Jukebox Upgrade Key* exactly as it is printed on the back of this guide.

Connecting the Player to Your Computer

1. Connect the small end of the included USB cable to the **USB port** on your Player.
2. Connect the large flat end of the USB cable to a USB port on your computer.

While your Player is connected to a powered USB port:

- Power is supplied by the USB connection conserving battery power.
- It's fully functional while the **power/lock switch** is in the *On* position.

Note: When the Player is in the Stereo Dock, connect *either* the Player or the Stereo Dock to your computer.

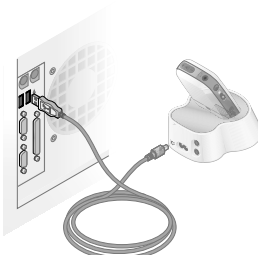
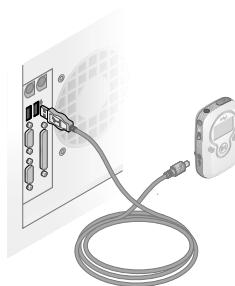
Connecting to Your Computer with the Intel® Audio Stereo Dock

Use the optional Stereo Dock to make connecting your Player to your computer quicker and easier.

1. Connect the small end of the USB cable included with your Player to the **USB port** on your Stereo Dock.
2. Connect the large flat end of the USB cable to a USB port on your computer.
3. Place your Player in the Stereo Dock and turn on your Player.

While your Player is in the Stereo Dock that is connected to a powered USB port:

- Power is supplied by the USB connection conserving battery power.
- It's fully functional while the **power/lock switch** is in the *On* position.



Additional Resources

Online Help

For further details on the features and capabilities of your Intel® Pocket Concert™ Audio Player and the accompanying software, or to locate troubleshooting information, consult the online Help at:

Start > Programs > Intel Pocket Concert Audio Player > Intel Pocket Concert Audio Player Help

Notices & Warranty Information

For information about warranties, copyrights and trademarks, disclaimers, FCC compliance, liability, and battery disposal, consult the *Player Information* document at:

Start > Programs > Intel Pocket Concert Audio Player > Intel Pocket Concert Audio Player Information

Customer Support

For assistance with MusicMatch Jukebox*:

- log on to the World Wide Web and connect to www.musicmatch.com
- send email to tech-support@musicmatch.com

For assistance with the Intel® Audio Manager software or the Player:

- click **Start > Programs > Intel Pocket Concert Audio Player > Customer Support > Customer Support Online**
or
- call Intel Customer Support at (916) 377-7000

Note: Your Player's serial number is located on the inside of the Player's **battery cover**.

MusicMatch Jukebox Upgrade Key

Copyright ©2000 Intel Corporation.
All rights reserved.

*Other brands and names are the property of their respective owners.



A35306-001