

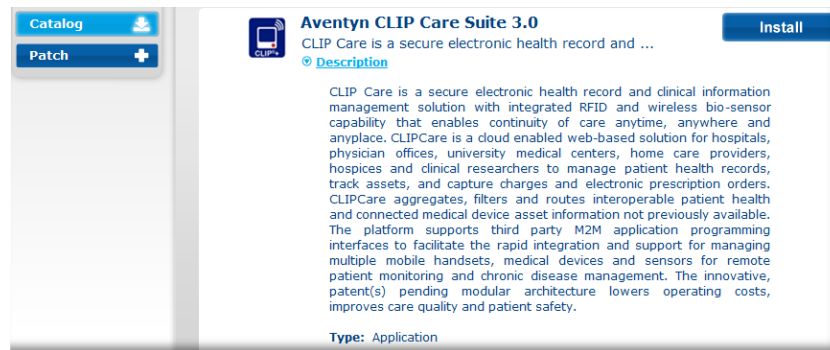
# Intel AppUp<sup>SM</sup> Small Business Service

Built on the Intel® Hybrid Cloud Platform

## Installation Guide -Aventyn CLIP\* Care Suite 3.0

### Installation Instructions for the Aventyn CLIP\* Care Suite 3.0 on the Intel Hybrid Cloud Platform Server with system build 3.0 or later


1. Go to Intel® Hybrid Cloud management portal - <https://hybridcloud.intel.com>
  - a. Login using your MSP ID.
  - b. Click on the Catalog link on the left hand side of the screen
  - c. Locate the Aventyn\* application.



*Aventyn CLIP\* Care Suite requires Microsoft\* IIS and a Microsoft\* SQL database setup before it can be used.*

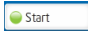
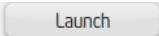
### Setting up IIS for Aventyn CLIP\* Care Suite\*

***\*Skip this section and go to "Aventyn CLIP\* CareSuite\* Database Setup" if IIS is already installed in the appliance.***

1. Install Microsoft\* Internet Information Server (IIS)
  - a. Log into the Intel® Hybrid Cloud server manager.
  - b. Select the Appliances  button, the Appliances page opens.
  - c. Select the Microsoft Windows\* appliance on which Aventyn\* is installed.

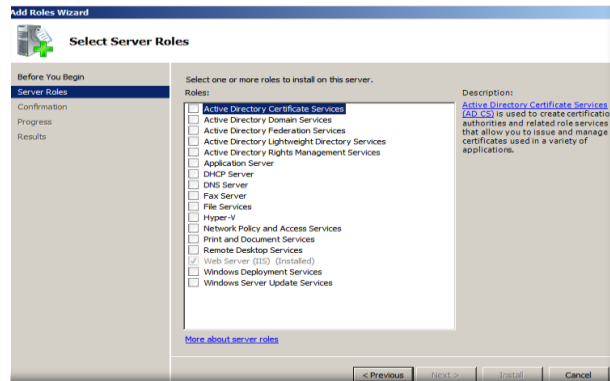
Copyright © 2012 Intel Corporation. All rights reserved. Intel and the Intel logo are trademarks of Intel Corporation in the U.S. and/or other countries.

\*Other names and brands may be claimed as the property of others.

- d. If the appliance is Stopped, click on the Start  button. Select the Console tab. The Console page opens.
- e. Click the Launch  button next to VNC Console. The VNC window opens up.
- f. Log into the Microsoft Windows\* appliance.
  - i. Choose **Start → All Programs → Administrative Tools → Server Manager**. The Server Manager window opens up.



- ii. Select Roles and click on Add Roles. The Add Roles Wizard window opens up. Click Next.
- iii. In Select Server Roles, check **Web Server (IIS)** and click Next



- iv. Check and select all the role services. Click Install.

Role Service	Status
Web Server	Installed
Common HTTP Features	Installed
Static Content	Installed
Default Document	Installed
Directory Browsing	Installed
HTTP Errors	Installed
HTTP Redirection	Installed
WebDAV Publishing	Installed
Application Development	Installed
ASP.NET	Installed
.NET Extensibility	Installed
ASP	Installed
CGI	Installed
ISAPI Extensions	Installed
ISAPI Filters	Installed
Server Side Includes	Installed
Health and Diagnostics	Installed
HTTP Logging	Installed
Logging Tools	Installed
Request Monitor	Installed
Tracing	Installed
Custom Logging	Installed
ODBC Logging	Installed
Security	Installed
Basic Authentication	Installed
Windows Authentication	Installed
Digest Authentication	Installed
Client Certificate Mapping Authentication	Installed
IIS Client Certificate Mapping Authentication	Installed
URL Authorization	Installed
Request Filtering	Installed
IP and Domain Restrictions	Installed
Performance	Installed
Static Content Compression	Installed
Dynamic Content Compression	Installed
Management Tools	Installed
IIS Management Console	Installed
IIS Management Scripts and Tools	Installed
Management Service	Installed
IIS 6 Management Compatibility	Installed
IIS 6 Metabase Compatibility	Installed
IIS 6 WMI Compatibility	Installed
IIS 6 Scripting Tools	Installed
IIS 6 Management Console	Installed
FTP Server	Installed
FTP Service	Installed
FTP Extensibility	Installed
IIS Hostable Web Core	Installed


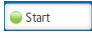
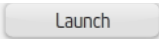
- V. Close the Server Manager window when installation is complete.

## Aventyn CLIP\* CareSuite\* Database Setup

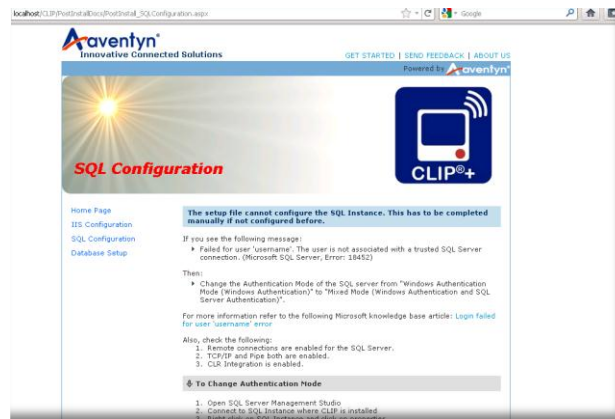
### Prerequisites:

- Microsoft\* Internet Information Server (IIS) Web Server is installed in the appliance
- Microsoft\* SQL Server is installed in the appliance

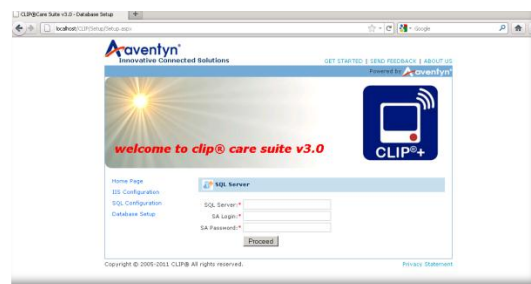
### 1. Generate the CLIP database and launch the CLIP application

- a) Log into the Intel® Hybrid Cloud Server management console.
- b) Select **Appliances**  button, the Appliances page opens.
- c) Select the appliance where Aventyn\* is installed on.
- d) If the appliance is Stopped, click on the **Start**  button. Select the **Console** tab. The **Console** page opens.
- e) Click the Launch  button next to VNC Console. The VNC window opens up.
- f) Log into the appliance.

g) Launch an internet browser and go to <http://localhost/CLIP/index.aspx>



h) Select Database Setup. The SQL Server login page is launched.



i) Fill out all the required fields and click Proceed.

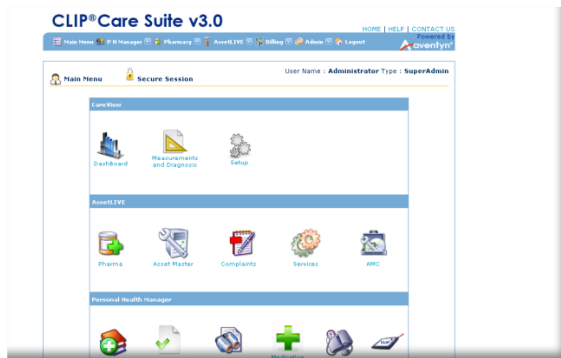
j) The SQL Setup Confirmation page is displayed. Click Continue.



k) The login page is displayed. Now login with 'admin@aventyn.com' as Login ID and Password as 'admin2007'. Click Continue.



l) The Aventyn\* CLIP Care Suite page is launched and is ready to be used.



## Technical Support

- For questions pertaining to this guide, contact Intel Customer Support:  
<http://www.intel.com/support/progserv/appupsbs/hybrid/sb/CS-032313.htm>
- In the event that you (the Managed Service Provider) are unable to resolve a technical support issue by providing first level support for the Software, you may obtain second level support from the help desk of the Software manufacturer, pursuant to the terms and conditions accompanying the Software. Technical Support contact information is provided at the following location:  
<http://www.intel.com/support/progserv/appupsbs/hybrid/sb/CS-032313.htm#Software>
- Intel® Hybrid Cloud Platform User Guide  
<http://www.intel.com/support/motherboards/server/hybrid/sb/CS-031729.htm>
- Appliance & Application Initial Setup Guides  
<http://www.intel.com/support/progserv/appupsbs/hybrid/sb/CS-032880.htm>