

This guide is intended to identify the steps required to install this software on the Intel® Hybrid Cloud platform, and does not replace the manufacturer’s instructions for third-party products. Before completing the instructions below, you will need to install the respective software on the server using the Store feature in the Intel® Hybrid Cloud Management Portal (<https://hybridcloud.intel.com>).

**LICENSE ALERT:** Purchased keys may not be used on this product.

### Contents

Product Version.....	1
Dependencies / Requirements.....	1
Download and Install .....	1
Install EPS.....	1
Connect to the Application.....	3
Licenses / Configuration.....	4
Uninstall EPS .....	4
Technical Support .....	5

### Product Version

McAfee Endpoint Protection Suite\* with ePolicy Orchestrator (EPO) 4.6 package.

### Dependencies / Requirements

Installs on Windows Server\* appliances that meet the requirements set in McAfee’s EPO 4.60 Install Guide. At this time, McAfee EPS will install on the following Intel Hybrid Cloud-based appliances:

- Windows 2008 R2 Standard Edition (IHC-MS314)

### Download and Install

McAfee Endpoint Protection Suite\* with EPO 4.6 package can be downloaded and installed from the Intel AppUp® Small Business Service Store. After downloading the package, you will need to manually complete the product installation.

### Install EPS

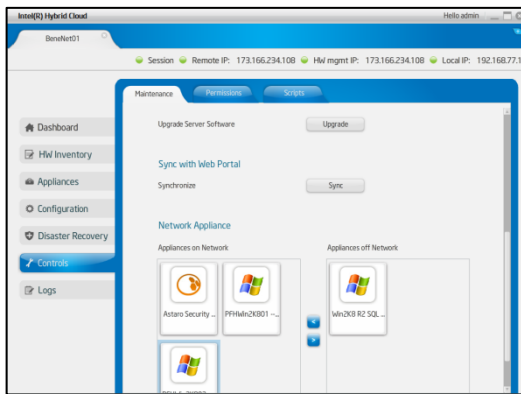
Before beginning the EPS installation, you must have, or create, a compatible Windows server appliance (VM) on the target Intel Hybrid Cloud server. If Microsoft\* SQL Server\* is installed on the appliance, it must be removed prior to running the eASI installer<sup>1</sup>.

---

<sup>1</sup> This is a limitation of the eASI installer; it checks for port conflicts but even if there is no port conflict, file conflicts arise later during the install.

To install McAfee Endpoint Protection Suite to a target appliance:

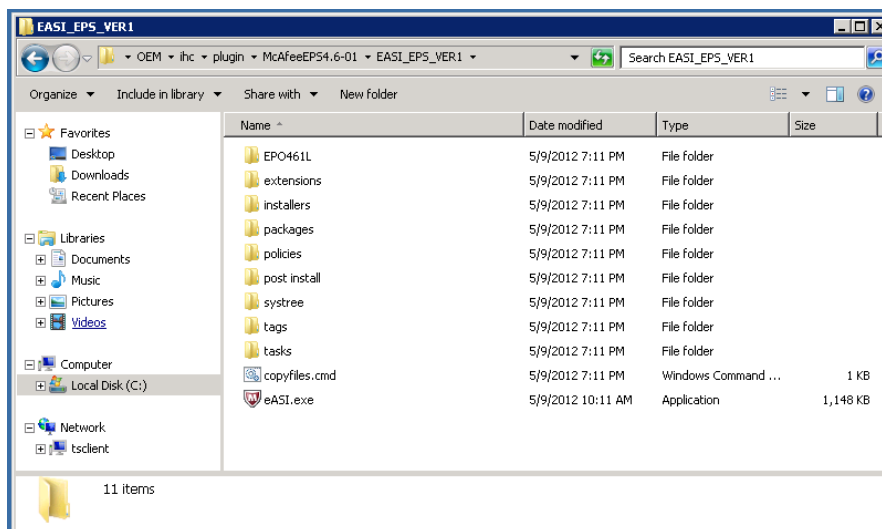
1. Select McAfee EPS from the Store catalog.
2. Select the target server and appliance.
3. Accept the end user license agreement (EULA) and then click **Finish**.
4. In the Intel Hybrid Cloud server manager, select **Controls** and then select the **Maintenance** tab.
5. To download the application to the target, click on **Sync**.



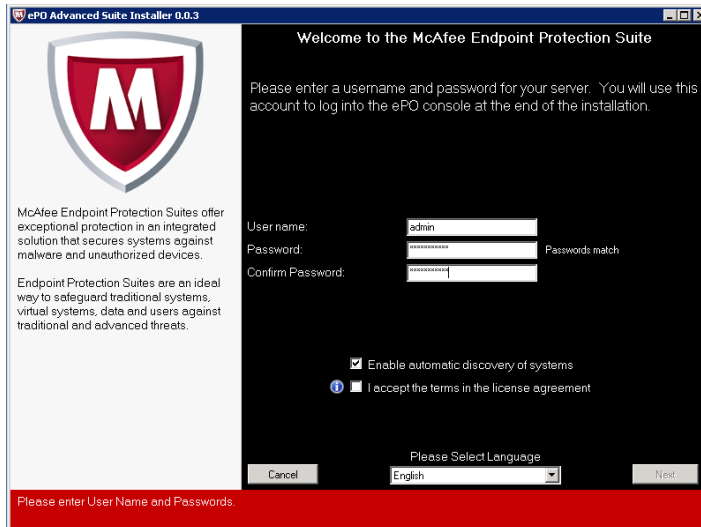
Once the download begins, you can monitor progress on the Appliances/Applications page of the appliance.

When the download finishes, the eASI installer is in the "Ready to Install" state.

6. Complete the installation by navigating to and opening: c:\Program Files (X86)\OEM\ihc\plugin\McAfeeEPS4.6-01\EASI\_EPS\_VER1.

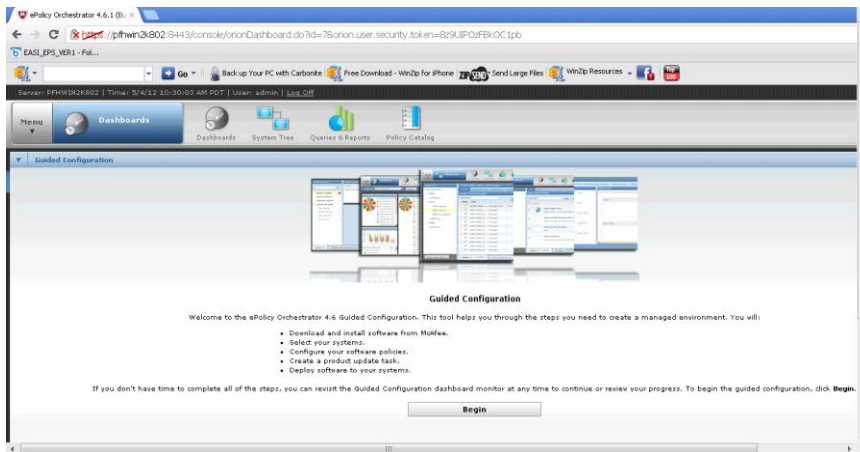


7. In this folder, double-click the **eASI.exe** file to manually complete the installation.



8. When the precheck completes, click **Continue** to complete the installation. If the precheck reports conflicts, you must correct them and then re-run eASI.exe.
9. On completion of the eASI installation, the Server Manager will show McAfee EPS as "Installed," and will show the application as "ON."

The EPO console will also be available:



## Connect to the Application

Once the manual portion of the installation is complete, the EPO console is accessed in the regular manner via the EPO Web console—there is an EPO icon on the desktop, and EPO can also be accessed via the Start menu on the Windows task bar.

### Licenses / Configuration

The EPO component of EPS is licensed. Please contact Intel Customer Support (North America: 1-800-404-2284; India: 1-800-425-6835) to receive your EPO License Key. When you call, you will need to provide the following information:

- MSP Name and company name
- E-mail address
- Asset Tag of the Intel® Hybrid Cloud server where McAfee EPS 4.6 is being installed

To enter and save the license:

1. Run EPO, then click **Menu** and select **Configuration > Server Settings**.
2. Select **License Key** from the left column.
3. Click the **Edit** button at the bottom of the screen.
4. Enter the license key in the space provided. The Save button will be grayed out until a valid license key has been entered.
5. Click **Save**, and then reselect **License Key** to display the saved key.

At this point, the License Key entry is complete.

### Uninstall EPS

Prior to uninstall, deployed products must be removed and Endpoint Protection Suite and its components uninstalled, per McAfee's instructions.

Programs that must be uninstalled include McAfee DLP WCFMcAfee ePolicy Orchestrator and all of the Microsoft SQL Server 2005 components. To succeed with the latter, you will have to first Stop the SQL Server (EPOSERVER) service.

To remove McAfee EPS from the Intel Hybrid Cloud server appliance:

1. Remove deployed products from managed machines on the network, as described in McAfee documentation.
2. Remove EPO and its SQL server components (nominally SQL Server 2005) using the Control Panel of the management appliance, as described in McAfee documentation.
3. Finally, remove the IHC EPS management components from the appliance:
  - a. Run the Intel Hybrid Cloud server manager.
  - b. Use your login credentials to connect to the target server.
  - c. Select the appliance where EPO is installed (appliance must be running).
  - d. Select the **Appliances** and **Application** tabs  
You should see the EPS installation in either a "Ready to Install" or "On" state.
  - e. Click the **Uninstall** button and let the uninstall complete.

This completes the uninstall of McAfee EPS and the eASI Installer from the appliance.

### Technical Support

- For questions pertaining to this guide, contact Intel Customer Support:  
<http://www.intel.com/support/progserv/appupsbs/hybrid/sb/CS-032313.htm>
- In the event that you (the Managed Service Provider) are unable to resolve a technical support issue by providing first level support for the Software, you may obtain second level support from the help desk of the Software manufacturer, pursuant to the terms and conditions accompanying the Software. Technical Support contact information is provided at the following location:  
<http://www.intel.com/support/progserv/appupsbs/hybrid/sb/CS-032313.htm#Software>
- Intel® Hybrid Cloud Platform User Guide  
<http://www.intel.com/support/motherboards/server/hybrid/sb/CS-031729.htm>
- Appliance and Application Initial Setup Guides  
<http://www.intel.com/support/progserv/appupsbs/hybrid/sb/CS-032880.htm>