

# Intel AppUp® SMB Service

Built on the Intel® Hybrid Cloud Platform

## Microsoft Windows SBS\* 2008 to 2011 Migration for Intel Hybrid Cloud Server Based on a 3.0 software Build

Revised 2/20/2013

### Contents

Before You Begin.....	2
Requirements .....	2
Resources .....	2
Create the Answer File.....	3
If the Windows SBS 2008 Source Server is on a 3.0 Intel® Hybrid Cloud Server.....	3
Download and Install Windows SBS 2011 .....	4
Upload SBSAnswer and Intel® Hybrid Cloud Migration Files to the Destination Server .....	4
Download the Windows SBS 2011 Migration Files .....	4
Upload the Windows SBS 2011 Migration Files .....	5
Windows SBS 2011 Migration .....	6
Start Migration.....	7
Perform Post Migration Validation.....	7
Start the ActivAeon Agents in Microsoft SBS 2011 .....	8
Troubleshooting .....	9
Windows SBS 2011 Fails to Download .....	9
Migration Fails to Detect the Windows SBS 2008 Source Server Name .....	10
Migration Fails to Log into the Source Server Domain .....	10

This document provides information on how to migrate the Windows Small Business Server\* (SBS) 2008 appliance to a Windows Small Business Server\* (SBS) 2011 appliance on the Intel® Hybrid Cloud server software version 3.0. This document also describes how to activate ActivAeon\* agents on the Windows SBS 2011 appliance after you finish the migration.

## Before You Begin

### Requirements

Please verify or do the following before beginning the migration process:

- Install the Intel® Hybrid Cloud server manager on the management computer.
- Ensure Windows SBS 2011 ISO is available.
- Verify that the Intel Hybrid Cloud server has software version 3.0 installed.
- Have the Windows SBS 2008 administrator username and password.
- Check to ensure Windows SBS 2008 appliance is started and connected to the same network as Windows SBS 2011.

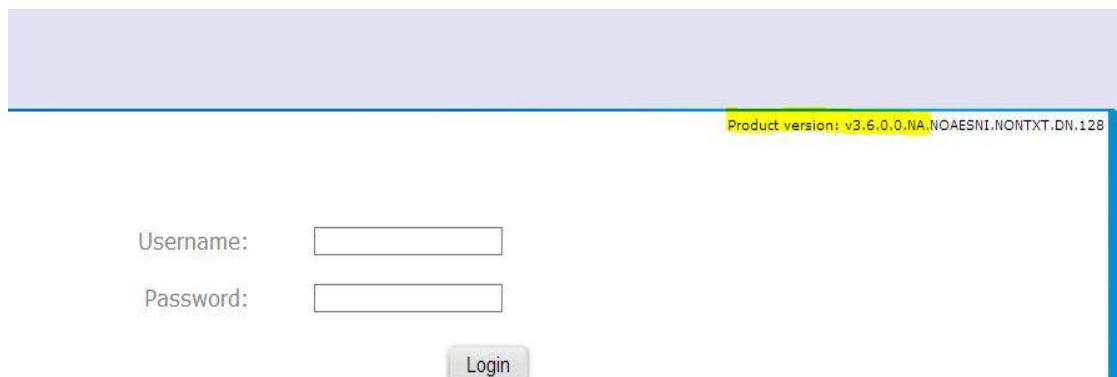
### Resources

The following resources are available for help with the migration process.

- Intel Hybrid Cloud Server Manager can be downloaded from <http://downloadmirror.intel.com/20187/eng/HybridCloudServerManager.exe>
- For migration tips, see [SBS 2011 Standard Migrations – Keys to Success](http://blogs.technet.com/b/sbs/archive/2011/07/01/sbs-2011-standard-migrations-keys-to-success.aspx) (<http://blogs.technet.com/b/sbs/archive/2011/07/01/sbs-2011-standard-migrations-keys-to-success.aspx>).
- For help with creating the Answer File, see [Migration to Windows Small Business Server 2011 Standard](http://technet.microsoft.com/en-us/library/gg490796.aspx) (<http://technet.microsoft.com/en-us/library/gg490796.aspx>).
- Windows SBS 2011 ISO can be downloaded from <http://technet.microsoft.com/en-us/evalcenter/gg492833.aspx>.
- Virtual CloneDrive can be downloaded from <http://www.slysoft.com/en/virtual-clonedrive.html>.

## Determine the Version of the Intel Hybrid Cloud Server

1. Launch a web browser.
2. Go to **https://<Intel Hybrid Cloud server IP>:64440/login**. The software version should display on the login screen.



Product version: v3.6.0.0.NA.NOAESNI.NONTXT.DN.128

Username:

Password:

Login

## Create the Answer File

For help with this section, see the reference listed in the [Resources](#) section of this guide.

1. Verify that the source server has a static IP.
2. Insert the Windows SBS 2011 Standard DVD or mount Windows SBS 2011 ISO to the Windows SBS 2008 source server.  
  
NOTE: If the Windows SBS 2011 Standard DVD is not available, you can download it from the link in the [Resources](#) section of this guide.  
If you do not have a tool for mounting the ISO, Virtual CloneDrive is a good tool to use. A download link is also provided in the Resources section.
3. Select the **Install Migration Preparation Tool** option. Install all updates required so the migration tool can be installed.
4. When the migration preparation tool installation completes, select its shortcut on the desktop.
5. Follow the migration preparation wizard. Continue until all detected issues have been fixed and updated.
6. Select the **Create an answer file** option when the source server is prepared successfully. The answer file dialogue box opens.
7. Select the **Migrate from an existing server** option unless it is a new installation.
8. Uncheck the **Run unattended** checkbox.
9. Select the time zone to match the source server time zone.
10. Enter information in the required fields in the answer file dialog box.
11. Uncheck the **DHCP** check box if DHCP is not running on the Windows SBS 2008 source server.
12. Save the SBSAnswer file to a thumb drive or a folder where it can be accessed later.
13. Eject and remove the Windows SBS 2011 Standard DVD or the mounted Windows SBS 2011 ISO.
14. **Important! Restart the Windows SBS 2008 source server.**

### If the Windows SBS 2008 Source Server is on Intel® Hybrid Cloud Server that has Software Version 3.5 or Lower

Use these instructions when the Windows SBS 2008 source server is installed as an Intel Hybrid Cloud appliance and the Intel Hybrid Cloud server has software version 3.5 or less installed.

1. Log in to the source server from Intel Hybrid Cloud server manager.
2. Log in to the Windows SBS 2008 VM.
3. Launch the command line.
4. Type `cd "C:\Program Files (x86)\activAeon\activAeon XA"`.
5. Type `"xaConfigure.exe /unmanage"` and press **Enter**.
6. **Important! Restart the Windows SBS 2008 source server.**

## If the Windows SBS 2008 Source Server is on Intel® Hybrid Cloud Server that has Software Version 3.6 or Higher

Use these instructions when the Windows SBS 2008 source server is installed as an Intel Hybrid Cloud appliance and the Intel Hybrid Cloud server has software version 3.6 or higher installed.

1. Log in to the source server from Intel Hybrid Cloud server manager.
2. Log in to the Windows SBS 2008 VM.
3. Launch the command line.
4. Type `cd "C:\Program Files (x86)\activAeon\activAeon XA\activAeon XA\Intel_Agent"` and press **Enter**.
5. Type `"xaIntelManageAgent.exe /revert"` and press **Enter**.
6. **Important! Restart the Windows SBS 2008 source server.**

## Download and Install Windows SBS 2011

These instructions are for installing Windows SBS 2011 on the Intel Hybrid Cloud server.

7. After ensuring that the dependencies and requirements listed in the Before You Begin (Requirements) section are met, go to the Intel AppUp® SMB Service store at: <https://store.intelhybridcloud.com>.
8. Log in using your MSP ID and password.
9. Search for and select **Windows SBS 2011**.
10. Select the applicable Intel Hybrid Cloud server.
11. Click **Add to Order**.
12. Complete the ordering process. Wait for download and installation to complete.

## Upload SBSAnswer and Intel Hybrid Cloud Migration Files to the Destination Server

These instructions are for uploading the Windows SBS answer file and the Intel Hybrid Cloud migration files to the Windows SBS 2011 destination server.

Requirements:

- Completed answer file. For instructions, refer to [Create the Answer File](#).
- Windows SBS 2011 has been downloaded from the Intel AppUp SMB Service store.

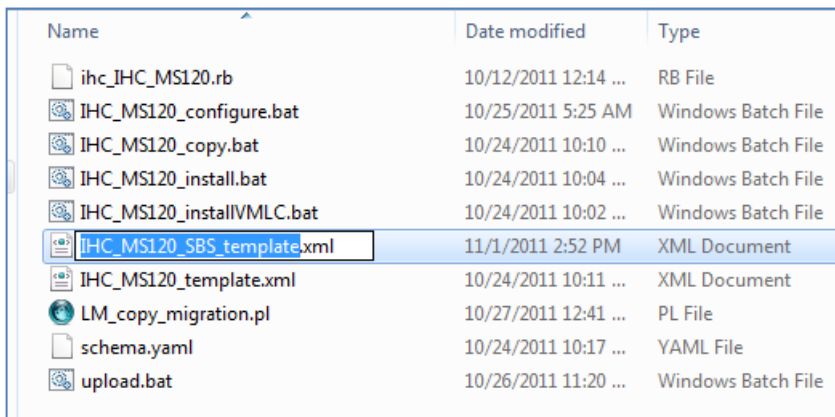
## Download the Windows SBS 2011 Migration Files

1. On the management PC, download the zipped folder containing the Windows SBS 2011 migration files from the Intel download center. Be sure to use the correct download for your software version:
  - The migration files can be download from:  
[http://downloadcenter.intel.com/Detail\\_Desc.aspx?agr=Y&DwnldID=20668](http://downloadcenter.intel.com/Detail_Desc.aspx?agr=Y&DwnldID=20668)
2. Unzip the Intel Hybrid Cloud SBS migration folder.

The following files should be displayed within the folder:

ihc\_IHC\_MS120.rb  
IHC\_MS120\_configure.bat  
IHC\_MS120\_copy.bat  
IHC\_MS120\_install.bat  
IHC\_MS120\_installVMLC.bat  
IHC\_MS120\_template.xml  
LM\_copy\_migration.pl  
schema.yaml

3. Copy the **SBSAnswerFile.xml** to the unzipped migration folder.
4. Rename the SBSAnswerFile.xml to "IHC\_MS120\_SBS\_template.xml".



Name	Date modified	Type
ihc_IHC_MS120.rb	10/12/2011 12:14 ...	RB File
IHC_MS120_configure.bat	10/25/2011 5:25 AM	Windows Batch File
IHC_MS120_copy.bat	10/24/2011 10:10 ...	Windows Batch File
IHC_MS120_install.bat	10/24/2011 10:04 ...	Windows Batch File
IHC_MS120_installVMLC.bat	10/24/2011 10:02 ...	Windows Batch File
IHC_MS120_SBS_template.xml	11/1/2011 2:52 PM	XML Document
IHC_MS120_template.xml	10/24/2011 10:11 ...	XML Document
LM_copy_migration.pl	10/27/2011 12:41 ...	PL File
schema.yaml	10/24/2011 10:17 ...	YAML File
upload.bat	10/26/2011 11:20 ...	Windows Batch File

## Upload the Windows SBS 2011 Migration Files

To upload the Windows SBS 2011 migration files to the Windows SBS 2011 appliance on the Intel® Hybrid Cloud server:

1. From the management computer, in Windows, choose **Start**.
2. In the *Search programs and files* search box, type "cmd" and then press **Enter**. The command line window opens.
3. Type "cd" along with the path to the Intel Hybrid Cloud SBS migration folder and then press **Enter**.

Example:

```
C:\>cd "Program Files <x86>/IHC_SBS_Migration_3.5"  
C:\Program Files <x86>\IHC_SBS_Migration_3.5>
```

4. Enter and execute the following command from the command line:

```
upload.bat <Intel® Hybrid Cloud server IP> <user name> <password>
```

Intel Hybrid Cloud server IP – The IP address of the Intel Hybrid Cloud destination server.

user name – The Intel® Hybrid Cloud Server Manager user name of the destination server.  
password - The Intel Hybrid Cloud Server Manager password of the destination server.

The following files should upload successfully:

ihc\_IHC\_MS120.rb  
IHC\_MS120\_configure.bat  
IHC\_MS120\_copy.bat  
IHC\_MS120\_install.bat  
IHC\_MS120\_installVMLC.bat  
IHC\_MS120\_SBS\_template.xml  
IHC\_MS120\_template.xml  
LM\_copy\_migration.pl  
schema.yaml

5. Copy the migration scripts to Windows SBS 2011:
  - a. If the Intel Hybrid Cloud server manager is not open, select **Start > All Programs > HybridCloudServerManager**.
  - b. Select the **Connect** tab.
  - c. Log in to the Intel Hybrid Cloud server manager.
  - d. Click the **Controls** button.
  - e. Select the **Scripts** tab to open the Scripts page.
  - f. If prompted, enter the admin password.
  - g. Enter the number displayed next to "Copy migration scripts to SBS 2011" and press **Enter**.
  - h. Press any key when the "Press any key to continue" message is displayed.The copying of the migration scripts to Windows SBS 2011 is now complete.

## Windows SBS 2011 Migration

Requirements:

- Intel Hybrid Cloud server manager is installed on the management computer.
- The steps for [Upload SBS Answer and Intel Hybrid Cloud Migration Files to the Destination Server](#) have been completed.
- Verify that the DNS name between the source and destination server is resolved.
- Verify that the Windows SBS 2008 source server has a static IP.
- Ensure that all users are logged off the Windows SBS 2008 source server.
- Windows SBS 2011 has been downloaded from the Intel AppUp® SMB Service store.

## Start Migration


Use the post migration sections at <http://technet.microsoft.com/en-us/library/gg490796.aspx> as a supplemental guide.

1. Start Windows SBS 2011 in migration mode.
2. If the Intel® Hybrid Cloud server manager is not open, choose **Start > All Programs > Hybrid Cloud Server Manager**.
3. Select the **Connect** tab.
4. Log in to the Intel Hybrid Cloud server manager.
5. Click the **Appliances** button to open the Appliances page.
6. Select the Windows SBS 2011 appliance.
7. Click the **Configure** tab.
8. Click **Add Network**.
9. Select **Remote** and click **Add**.
10. Click the **Start** button. The Appliance Auto Configuration Information window opens.
11. Enter information into the required fields and then click **Apply**. The migration process starts. Depending on the source data size, and it may take more 30 minutes to complete.

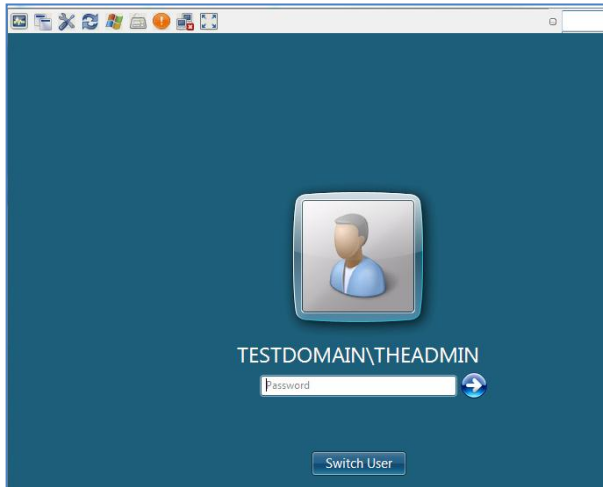
Appliance Auto Configuration Information	
First Name (*)	Last Name (*)
Address	Address 1
Zip Code	City
State	Country
Server Name (*)	Business Name (*)
Network Administrator (*)	Internal Domain Name (*)
Password (*)	Re-enter Password (*)

(\*) Mandatory Apply

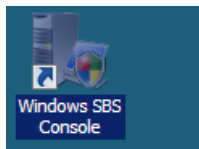
## Perform Post Migration Validation

1. When the migration completes, select the Windows SBS 2011 appliance on Intel Hybrid Cloud Server Manager.
2. If the Windows SBS 2011 status is Stopped, click the **Start** button. The Windows SBS 2011 status changes to "Starting" and then to "Running."
3. Click the **Console** tab to open the Console page.
4. Click the **Launch** button next to VNC Console. The Windows SBS 2011 VNC opens.
5. Click the **Send Ctl+Alt+Del to host**  button in the Windows SBS 2011 VNC.

6. Log in to the Windows SBS 2011 appliance using the administrator credentials.




7. Select **Start** and type "cmd" into the *Search programs and files* search box. The command line window opens.
8. Type "ipconfig" into the command line. The IPv4 address and gateway should match the Destination Server IP address and Default gateway entered into the SBSAnswerFile.
9. Click **Start**, right-click on **Computer** and select **Properties**. The domain and computer names should match the Windows SBS 2008 server domain name and Destination Server name entered into the SBSAnswerFile, respectively.
10. Launch the **Windows SBS Console** from the icon on the desktop:



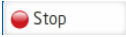
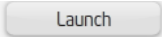
The Windows SBS Console opens.

11. Click on **Users and Groups**. Verify that the user names and number of users match those in the Windows SBS 2008 source server.

## Start the ActivAeon Agents in Microsoft SBS 2011

1. Shutdown the Windows SBS 2008 source server.
2. If Intel Hybrid Cloud Server Manager is not open, choose **Start > All Programs > HybridCloudServerManager**
3. Select the **Connect** tab.
4. Log into Hybrid Cloud Server Manager. The Hybrid Cloud Server Manager opens.
5. Select the **Appliances**  button.
6. Select the Microsoft\* SBS 2008 appliance (**Skip this step if Microsoft\* SBS 2008 is not installed in Intel Hybrid Cloud server**)

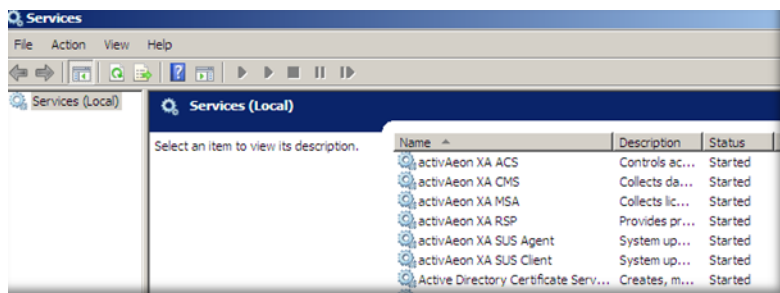


7. If the Microsoft\* SBS 2008 appliance has a Running status, click the **Stop**  button. Microsoft\* SBS 2008 status changes to Stopping and then Stopped. (**Skip this step if Microsoft\* SBS 2008 is not installed in Intel Hybrid Cloud server**)
8. Select the Microsoft\* SBS 2011 appliance.
9. If the Microsoft\* SBS 2011 appliance has a Stopped status, click the **Start** button to run the appliance. When the status changes to Running, click on the **Console** tab.
10. Click the Launch  button next to VNC Console.
11. Log into the Microsoft\* SBS 2011 appliance through the VNC.
12. After logging in, choose **Start**, enter cmd into *Search programs and files* text box and hit Enter key.
13. `cd` to the **ActivAeon XA** directory. Enter and execute the following command:

```
xaConfigure.exe /manage
```

```
C:\>cd "Program Files (x86)"
C:\Program Files (x86)>cd activAeon
C:\Program Files (x86)\activAeon>cd "activAeon XA"
C:\Program Files (x86)\activAeon\activAeon XA>xaConfigure.exe /manage
```

14. Choose **Start** and enter services.msc into *Search programs and files* text box and press the Enter key. The Services window opens. All **ActivAeon** agents should have Status = **Started**. ActivAeon agents have been activated.



## Troubleshooting

### Windows SBS 2011 Fails to Download

If Windows SBS 2011 does not begin downloading, initiate the download by synching the server with its work queue at the portal.

1. If the Intel® Hybrid Cloud server manager is not open, select **Start > All Programs > Hybrid Cloud Server Manager**.
2. Select the **Connect** tab.
3. Log in to the Intel Hybrid Cloud server manager.
4. Select **Controls** and click the **Maintenance** tab.
5. Click **Sync** to initiate the download.

## Migration Fails to Detect the Windows SBS 2008 Source Server Name

1. Verify that all users are logged out of the SBS 2008 server.
2. In the Windows SBS 2011 (destination server) VNC window, do the following:
  - a. Press Shift+F10.
  - b. Ping the source server IP.
  - c. Type "control netconnections" in the command line and press **Enter**.
  - d. Right-click the enabled LAN (this LAN should contain the IP address of the destination server as designated by the answer file).
  - e. Click **Internet Protocol Version 4 (TCP/IPv4)**.
  - f. Click **Properties**.
  - g. Click **Advance**.
  - h. Select the **DNS** tab.
  - i. Select the **Append these DNS suffixes** option and click **Add**.
  - j. Enter the FQDN (i.e., anything.local) and click **Add**.
  - k. Click **OK** and then close the TCP/IPv4 Properties window.
  - l. Log back in to the Windows SBS 2011 destination server and restart the migration.

## Migration Fails to Log into the Source Server Domain

1. Log in to the Windows SBS 2008 source server.
2. Stop and restart the DNS service.
  - a. Type "services.msc" into the "Search programs and files" field.
  - b. Search for **DNS services**.
  - c. Stop and restart the DNS services.
3. Clear the DNS cache.
  - a. Bring up the command line.
  - b. Type "ipconfig /flushdns" and press **Enter**.
4. Log back in to the Windows SBS 2011 destination server and restart the migration.