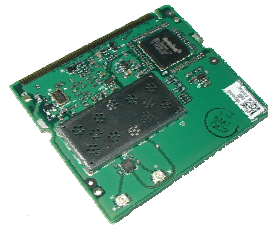




# Intel® PRO/Wireless 2100 LAN MiniPCI Adapters Types 3B

## Product Description:

Embedded 2.4 GHz Wireless Local Area Network (LAN) MiniPCI adapters. The MiniPCI Types 3B form factor is designed for notebook computer systems where overall thickness must be kept to an absolute minimum\*.



Type 3B MiniPCI shown

## Key Features:

- 2.4 GHz support
- Up to 11 Mbps at 2.4 GHz
- IEEE 802.11b standard technology
- Industry standard wireless LAN security support is available (802.1X, WEP, WPA<sup>§</sup>, AES+<sup>§</sup>) with enabling software implementation. <sup>°</sup>
- Cisco\* Compatible Extensions (such as LEAP and CKIP) support is available on certain models. Check with your PC manufacturer for Cisco Compatible validation. <sup>§</sup>
- Intel® Wireless Coexistence System capability enables Bluetooth\* co-existence

Intel in  
Communications

## Technical Specifications

<b>Model Name</b>	Intel® PRO/Wireless 2100 LAN MiniPCI Adapter Type 3B
<b>Dimensions (L x W x H)</b>	Type 3B: 44.60mm x 59.75mm x 4.90mm
<b>Weight</b>	Type 3B: 12g
<b>Antenna Interface Connector</b>	Hirose U.FL-R-SMT mates with cable connector U.FL-LP-066
<b>Radio ON/OFF control<sup>°</sup></b>	Supported by both hardware and software
<b>Connector Interface</b>	MiniPCI Type III edge connector
<b>LEDs output</b>	Link, Activity
<b>Operating Temperature</b>	0 to +70° Celsius
<b>Humidity</b>	0 to 95% non-condensing
<b>Frequency Modulation</b>	2.4 GHz (802.11b)
<b>Frequency Band</b>	2.4 GHz to 2.497 GHz
<b>Modulation</b>	DBPSK, DQPSK, CCK
<b>Wireless Medium</b>	2.4GHz ISM: Direct Sequence Spread Spectrum (DSSS)
<b>Channels</b>	Most of World (MOW) SKU 1-11; Rest of World (ROW) SKU 1-14
<b>Data Rates</b>	Up to 11Mbps, 5.5 Mbps, 2 Mbps, 1 Mbps
<b>Voltage</b>	3.3 V

Intel PRO  
Network Connections

## Technical Specifications continued

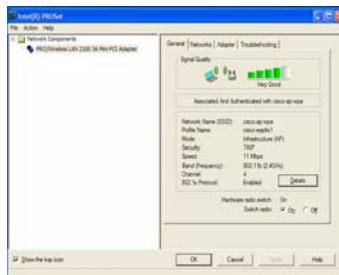
<b>Operating System</b>	Microsoft* Windows* XP Professional, Windows* XP Home, Windows* XP Tablet, Windows* 2000, Windows* 98 (Retail), Windows* 98SE, Windows* NT4.0 (SP6 or later)
<b>Wi-Fi Alliance</b>	Wi-Fi CERTIFIED* for WPA <sup>§</sup>
<b>WHQL Certification</b>	Yes
<b>WLAN Standard</b>	IEEE 802.11b
<b>Architecture</b>	Infrastructure or ad hoc (peer-to-peer)
<b>Security</b>	WPA <sup>§</sup> , 802.1X, EAP-TLS, 128-bit and 64-bit WEP, CKIP <sup>§</sup>
<b>Proprietary security</b>	Supports Cisco* Compatible Extensions such as LEAP and CKIP <sup>§</sup>
<b>Product Safety</b>	UL, C-UL, CB (IEC 60590)
<b>Compliance</b>	Two (2) SKUs for all major countries

Products Available	Product Code
Intel® PRO/Wireless 2100 LAN MiniPCI Adapter Type 3B (MOW, Ch 1-11)	WM3B2100NA3
Intel® PRO/Wireless 2100 LAN MiniPCI Adapter Type 3B (ROW, Ch 1-14)	WM3B2100WW3

## Intel® PROSet Software<sup>◊</sup>

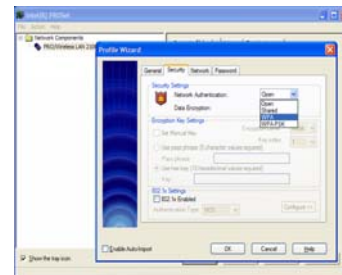
As part Intel® PRO Network Connection Software, Intel® PROSet software<sup>◊</sup> provides driver consistency among desktops, notebooks, and servers in one simple common user interface. Intel PROSet software helps enable a superior mobile experience\* by providing:

- Connection Status
- Network/NIC Management



### Connection Status

- Signal Strength
- Network Name
- Security
- Radio On/Off



### Network/NIC Management

- Network Management
  - Network Name
  - Security Settings
  - Network Discovery
  - Multiple profile setup
- NIC Management
  - Power Settings

\*Other names and brands may be claimed as the property of others

+Wireless connectivity and some features may require you to purchase additional software, services or external hardware. Availability of public wireless LAN access points limited and some hotspots may not support Linux-based Intel Centrino mobile technology systems. System performance measured by MobileMark\* 2002. System performance, battery life, wireless performance and functionality will vary depending on your specific operating system, hardware and software configurations. See [http://www.intel.com/products/centrino/more\\_info](http://www.intel.com/products/centrino/more_info) for more information.

<sup>§</sup> Some security solutions may not be supported by your PC's operating system and/or by your PC manufacturer. Check with your PC manufacturer for details on availability

<sup>◊</sup> Intel® PROSet for Wireless software may not be supported by your PC manufacturer. Check with your PC manufacturer for details on availability.

Information in this document is provided in connection with Intel products. No license, express or implied, by estoppel or otherwise, to any intellectual property rights is granted by this document. Except as provided in Intel's Terms and Conditions of Sale for such products, Intel assumes no liability whatsoever, and Intel disclaims any express or implied warranty, relating to sale and/or use of Intel products including liability or warranties relating to fitness for a particular purpose, merchantability, or infringement of any patent, copyright or other intellectual property right. Intel products are not intended for use in medical, life saving, or life sustaining applications. Intel may make changes to specifications and product descriptions at any time, without notice. For the most current product information, please visit: <http://www.intel.com/network>

Intel and the Intel logo are trademarks or registered trademarks of the Intel Corporation or its subsidiaries in the United States and other countries.

Copyright © Intel Corporation, 2002-2004. All rights reserved.

04212004v1