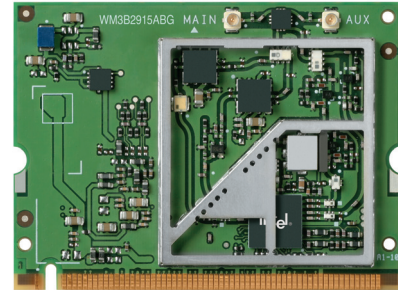




Intel® PRO/Wireless 2915ABG Network Connection

Product Description

The Intel® PRO/Wireless Network Connection is an embedded 802.11a/b/g MiniPCI adapter operating in the 2.4 GHz and 5 GHz spectrum. This solution is based on the MiniPCI Type 3B form factor designed to meet the space and size requirements for thin and lightweight notebook computer systems.



Key Features

- IEEE 802.11a/b/g standard tri-mode Wi-Fi CERTIFIED* Wireless LAN support (2.4 GHz and 5 GHz)¹
- Up to 54 Mbps at 2.4 GHz and 5 GHz (Note: 802.11b up to 11 Mbps and 802.11a/g up to 54 Mbps throughput)
- Industry-standard Wireless LAN security support is available (802.1X, 802.11i, WEP, WPA*, WPA2*, Hardware AES)²
- Cisco Compatible Extensions (including LEAP, CKIP, EAP-FAST) support available²
- Support for antenna diversity enables optimized WLAN performance for multi-antenna systems
- Intel® Wireless Coexistence System Phase 2 capability enables Bluetooth* co-existence including Bluetooth Priority Signaling¹
- Support for Wi-Fi Multimedia (WMM*)³

Technical Specifications

Model Name	Intel® PRO/Wireless 2915ABG Network Connection (WM3B2915ABG)
Dimensions (H x W x D)	1.75 in x 2.35 in x 0.19 in (44.60 mm x 59.75 mm x 4.9 mm)
Weight	13g
Antenna Interface Connector	Hirose U.FL-R-SMT mates with cable connector U.FL-LP-066
Dual-diversity Antenna	On-board dual-diversity switching support for systems designed with two antennas
Radio ON/OFF control ⁵	Supported by both hardware and software
Connector Interface	MiniPCI Type III edge connector
LEDs Output	Link, Activity
Operating System	Microsoft Windows* XP (Professional, Home, Tablet), 2000
Wi-Fi Alliance	Wi-Fi CERTIFIED* for 2.4 GHz and 5 GHz band, WMM*, WPA*, and WPA2*
WHQL	Yes
MiniPCI Compliant	Yes
WLAN Standard	IEEE 802.11a, IEEE 802.11b, IEEE 802.11g, 802.11d, 802.11h, 802.11i, and 802.11e
Architecture	Infrastructure or ad hoc (peer-to-peer). Ad hoc mode limited in some IEEE 802.11a frequencies.
Roaming ⁴	802.11a/b/g compliant for seamless roaming between respective access points (802.11a, 802.11g, 802.11b)
Security	<ul style="list-style-type: none"> ■ Authentication ■ Encryption <ul style="list-style-type: none"> ■ LEAP;² WPA;² 802.1X, EAP-TLS, EAP-FAST, PEAP ■ CKIP, TKIP, 128-bit and 64-bit WEP, Hardware AES²
Product Safety	UL, C-UL, CB (IEC 60590)
Compliance	Cisco Compatible Extensions*, Wi-Fi Alliance

Products Available

- Intel® PRO/Wireless 2915ABG Network Connection (North America)
- Intel® PRO/Wireless 2915ABG Network Connection (Europe)
- Intel® PRO/Wireless 2915ABG Network Connection (Japan)
- Intel® PRO/Wireless 2915ABG Network Connection (Rest of World)

Product Codes

- WM3B2915ABGNA
- WM3B2915ABGEU
- WM3B2915ABGJP
- WM3B2915ABGRW

Intel® PROSet/Wireless Software v9.0⁵

Intel® PROSet/Wireless software enables a superior mobile experience by providing:

- New, easy-to-use user interface
- Intel® Smart Wireless Solutions support including:
 - Wireless Network Configuration Wizard allows secure, easy AP/client setup
 - Security Assistant automates WLAN security configuration
 - Wireless Troubleshooter assists user with WLAN connectivity

- IT Configuration Utility enabling administrators to remotely manage notebooks
- Single Sign On support enabling a single set of credentials to authenticate the user to both WLAN network and the machine/domain
- Centralized Profile Management simplifies IT profile distribution

New Look and Feel

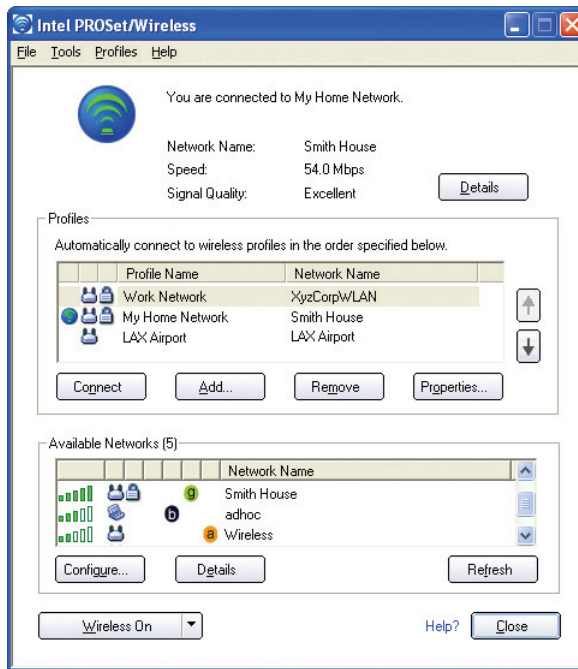
- Single screen provides overview of WLAN environment
- Allows easy access to commonly used functions to simplify user connectivity

Available Networks

- Automatically detects available networks
- Displays signal strength, Network Name (SSID), infrastructure/ad hoc, security status, and network type

Radio Off

One click turns off the WLAN radio in SW



Menu Bar

Launch advanced functions, including third-party tools from within the application

Signal Status

Overview of current connection

Profiles

- Profile Wizard simplifies profile setup
- Import/export profiles

Additional Screens

Advanced settings, security, diagnostics, wireless helper, etc.

¹ Wireless connectivity and some features may require you to purchase additional software, services or external hardware. Availability of public wireless LAN access points is limited, wireless functionality may vary by country and some hotspots may not support Linux*-based Intel® Centrino™ mobile technology systems. System performance measured by MobileMark® 2002. System performance, battery life, wireless performance and functionality will vary depending on your specific operating system, hardware and software configurations. See http://www.intel.com/products/centrino/more_info for more information.

² Some security solutions may not be supported by your PC's operating system and may require additional software and/or certain hardware as well as wireless LAN infrastructure support. Check with your PC manufacturer for details.

³ WMM support requires a WMM-enabled access point.

⁴ Roaming is supported only between each respective band and mode of access points.

⁵ Intel® PROSet/Wireless software version 9 supports only Intel® Centrino™ mobile technology-based notebooks with Intel® PRO/Wireless 2200BG Network Connection and Intel® PRO/Wireless 2915ABG Network Connection may not be supported by your PC's operating system and/or by your PC manufacturer. Some features may require specific hardware configurations. Check with your PC manufacturer for details.

Information in this document is provided in connection with Intel products. No license, express or implied, by estoppel or otherwise, to any intellectual property rights is granted by this document. Except as provided in Intel's Terms and Conditions of Sale for such products, Intel assumes no liability whatsoever, and Intel disclaims any express or implied warranty, relating to sale and/or use of Intel products including liability or warranties relating to fitness for a particular purpose, merchantability, or infringement of any patent, copyright or other intellectual property right. Intel products are not intended for use in medical, life saving, or life sustaining applications. Intel may make changes to specifications and product descriptions at any time, without notice. For the most current product information, please visit: <http://www.intel.com/network>

Copyright © 2004 Intel Corporation. All rights reserved.

Intel, the Intel logo, and Intel Centrino are trademarks or registered trademarks of Intel Corporation or its subsidiaries in the United States and other countries.

*Other names and brands may be claimed as the property of others.