

## Broadcom GNSS Geolocation Sensor for Windows 8 Installation Instructions

The installation package contains several options that are suitable for various configurations listed below.

Broadcom GNSS Geolocation Sensor for Windows 8 Installation Instructions .....	1
1 CP210x or ACPI .....	2
1.1 Interactive Installation.....	2
1.2 Upgrade .....	8
1.3 Interactive Uninstallation .....	10
1.4 Interactive Maintenance .....	12
1.5 Batch or Silent Installation and Uninstallation.....	16

# 1 CP210x or ACPI

CP210x configuration is suitable for platforms that are using the Silab CP210x driver

ACPI configuration is suitable for platforms that are using Broadcom Bus Driver

## 1.1 Interactive Installation

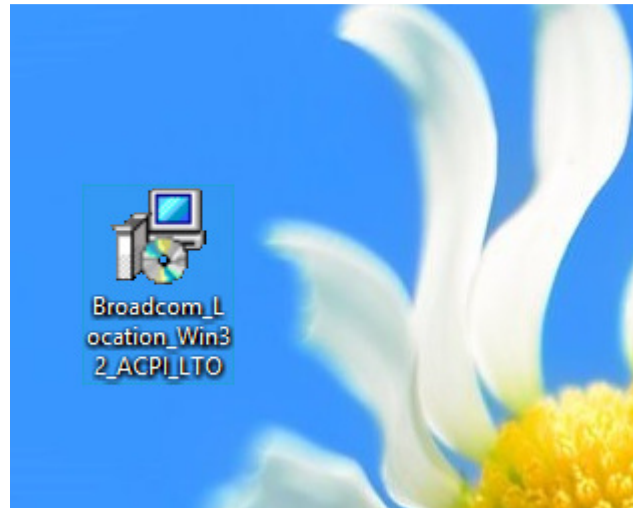
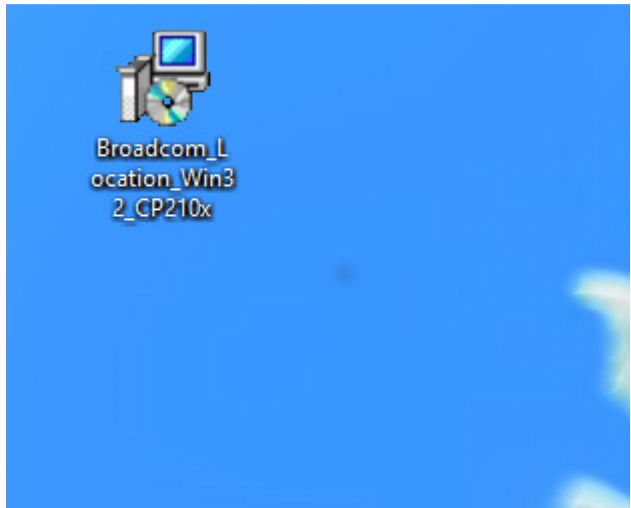
1.1.1 Double-click on Broadcom\_Location\*.msi for the appropriate Windows Operating System using the choices below:

### ACPI

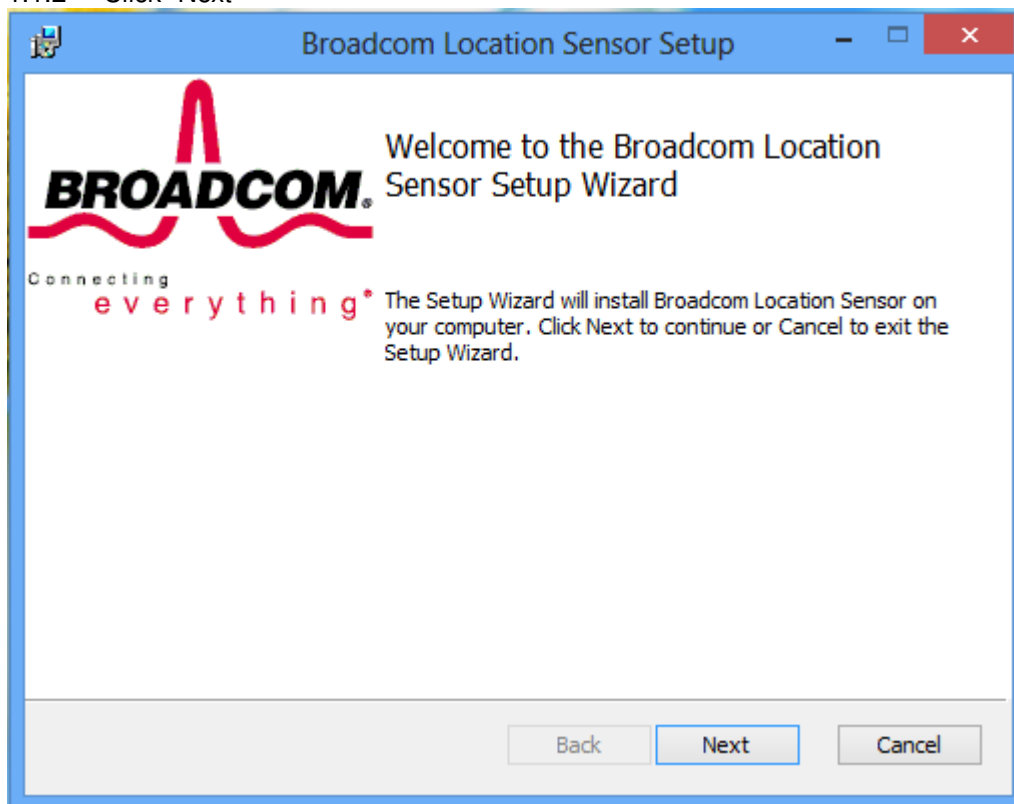
- Broadcom\_Location\_x86\_ACPI\_LTO.msi – For 32-bit Windows 8 Operating System and LTO
- Broadcom\_Location\_x86\_ACPI.msi – For 32-bit Windows 8 Operating System and NO LTO

### CP210x

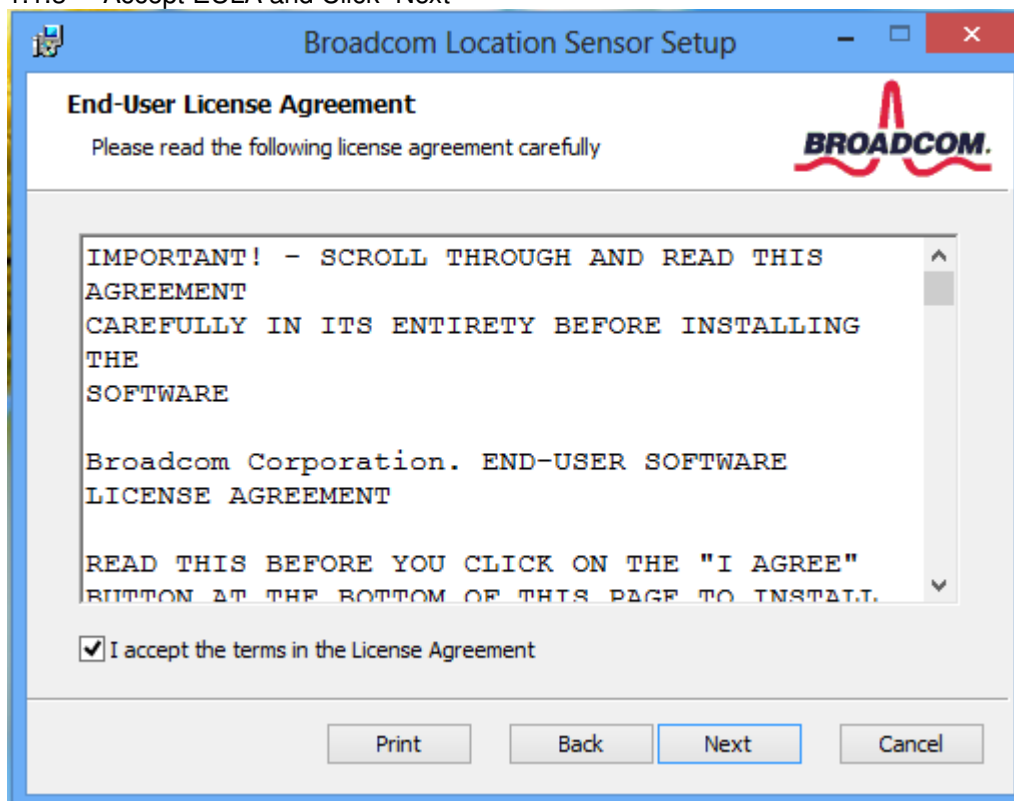
- Broadcom\_Location\_x86\_USB\_LTO.msi – For 32-bit Windows 8 Operating System and LTO
- Broadcom\_Location\_x86\_USB.msi – For 32-bit Windows 8 Operating System and NO LTO
- Broadcom\_Location\_x64\_USB\_LTO.msi – For 64-bit Windows 8 Operating System and LTO
- Broadcom\_Location\_x64\_USB.msi – For 64-bit Windows 8 Operating System and NO LTO



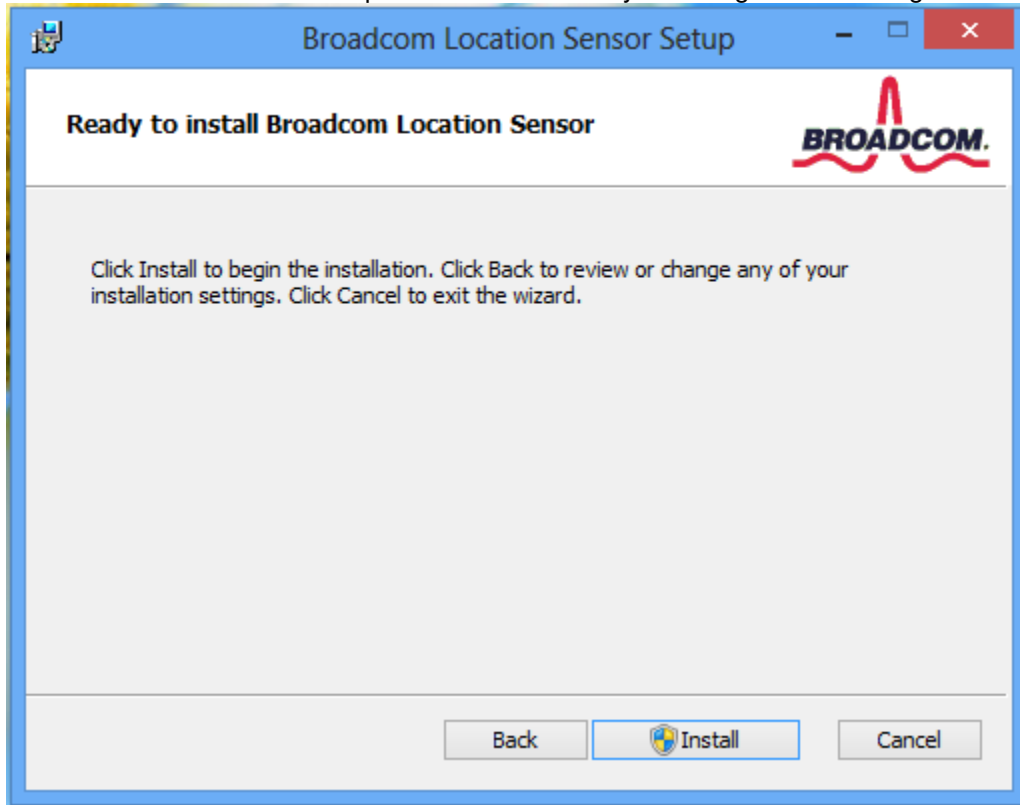
## 1.1.2 Click "Next"



## 1.1.3 Accept EULA and Click "Next"

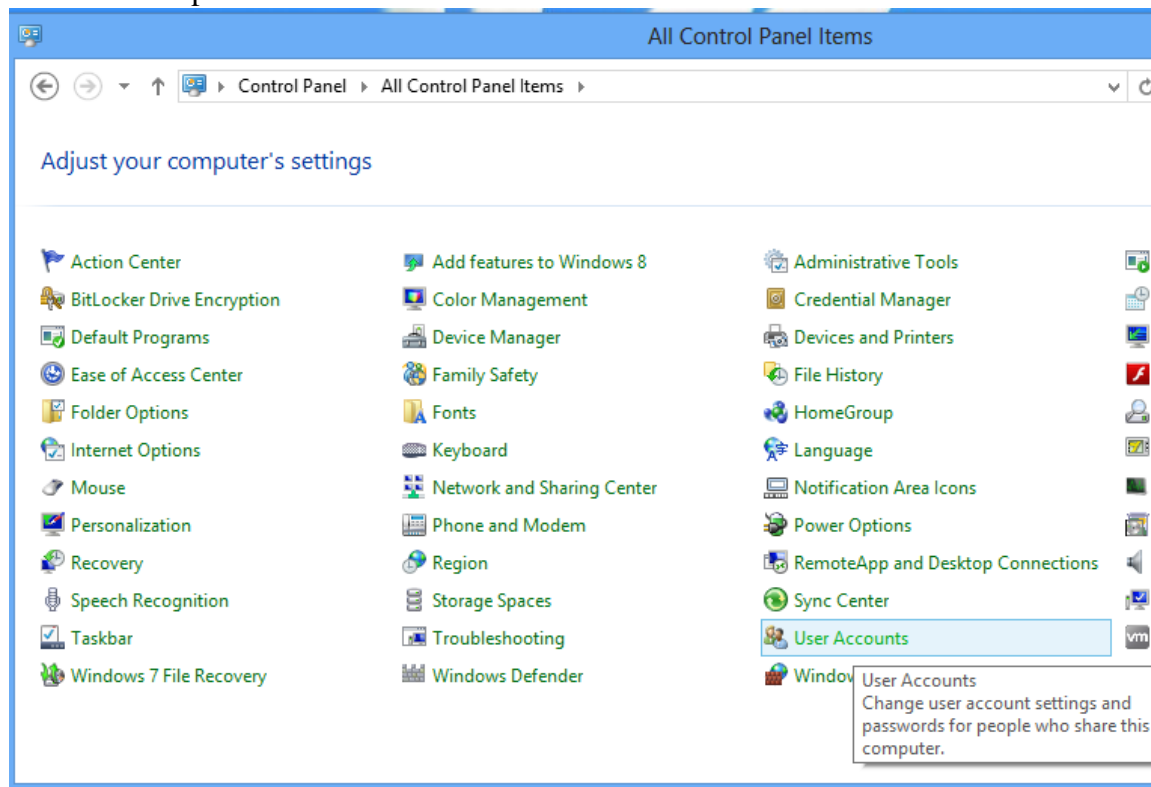


1.1.4 Click "Install" and complete the installation by choosing default settings.

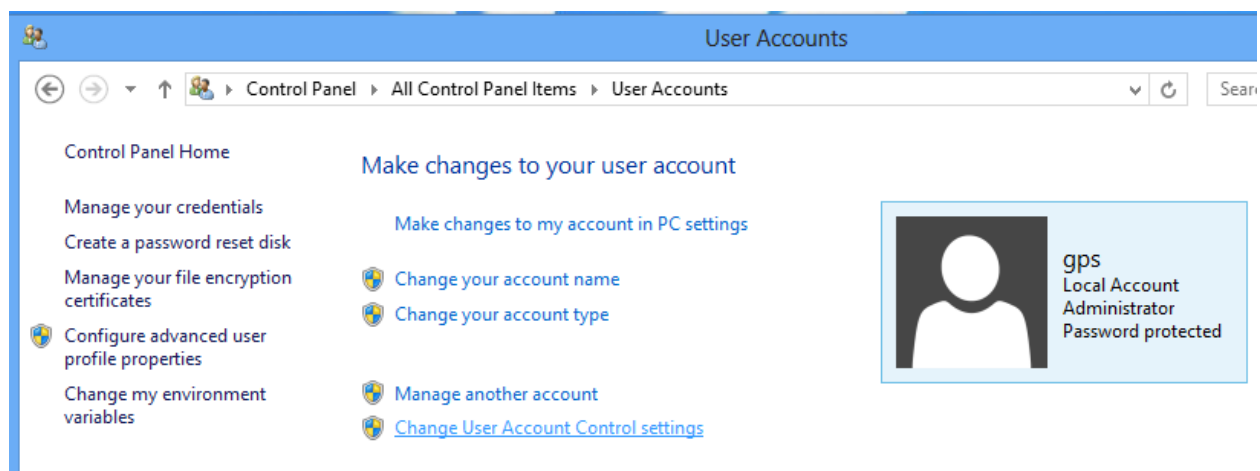


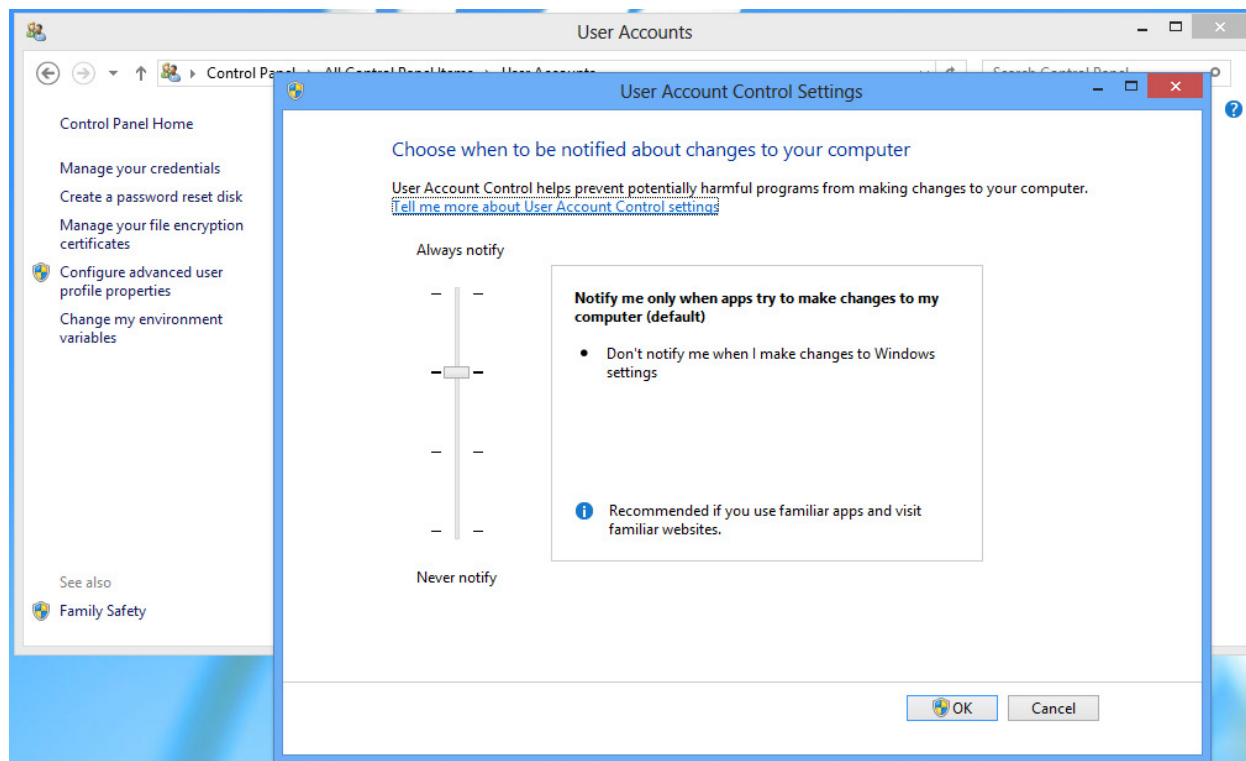
Note: When you execute the installer as a user you will see the Shield requesting elevation for administration right. If you execute the installer as an admin you will not see the shield. It is always preferred to install the driver with full administration rights.

If you have full admin control on the machine you are deploying the MSI you can decide on that machine to configure the user accounts

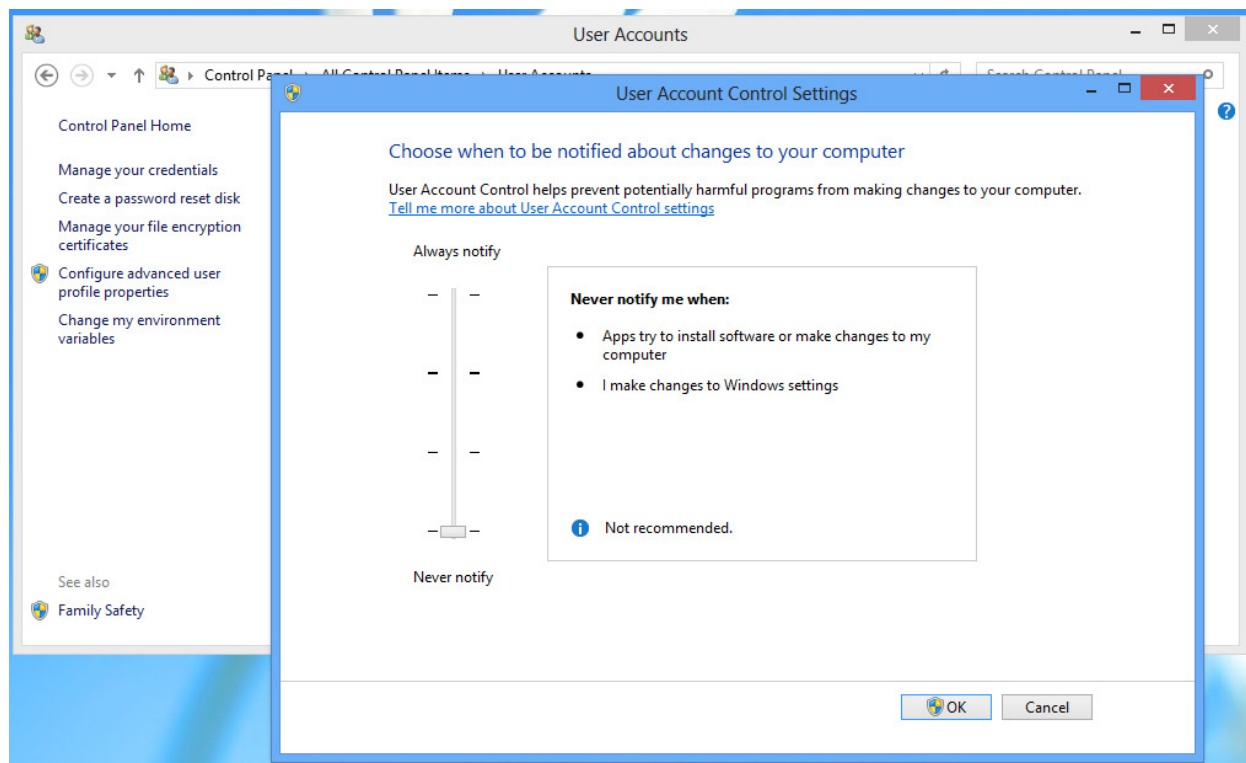


Click on Change User Account Control Settings

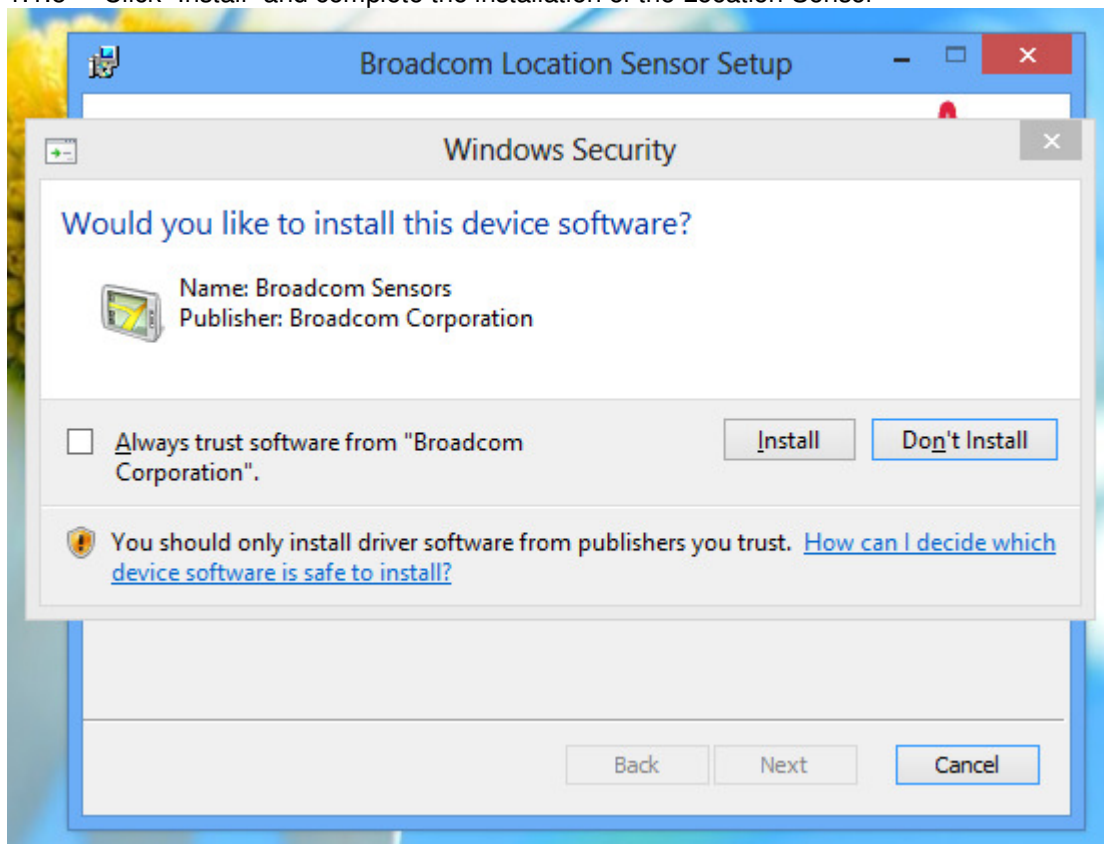




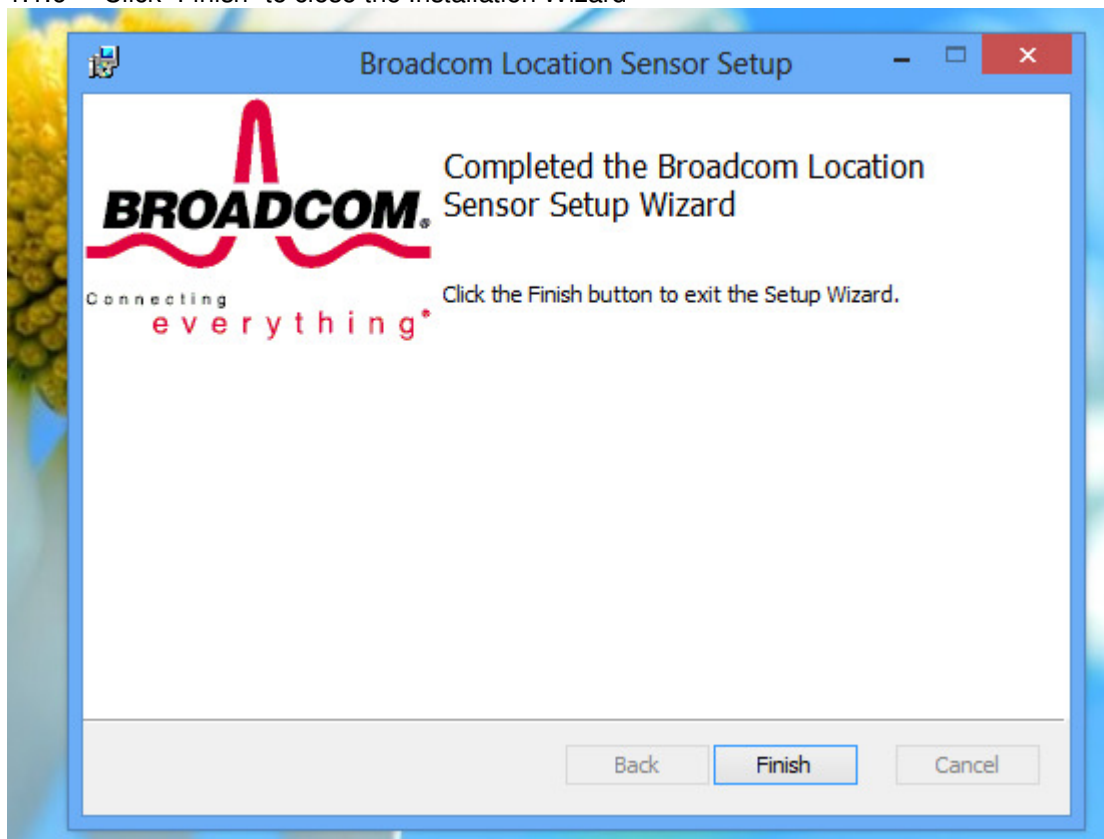
You can set it as follow. No dialog box will popup



## 1.1.5 Click "Install" and complete the installation of the Location Sensor

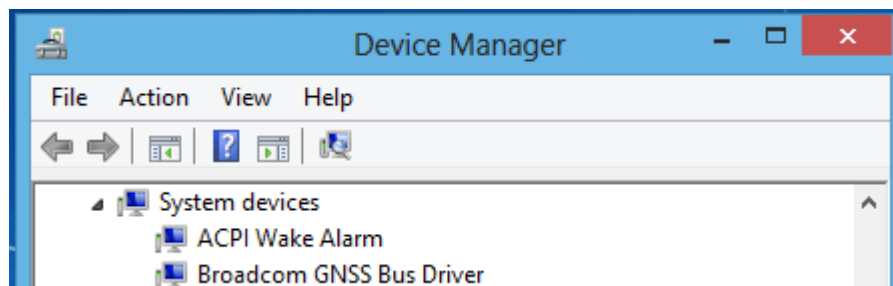


## 1.1.6 Click "Finish" to close the Installation Wizard

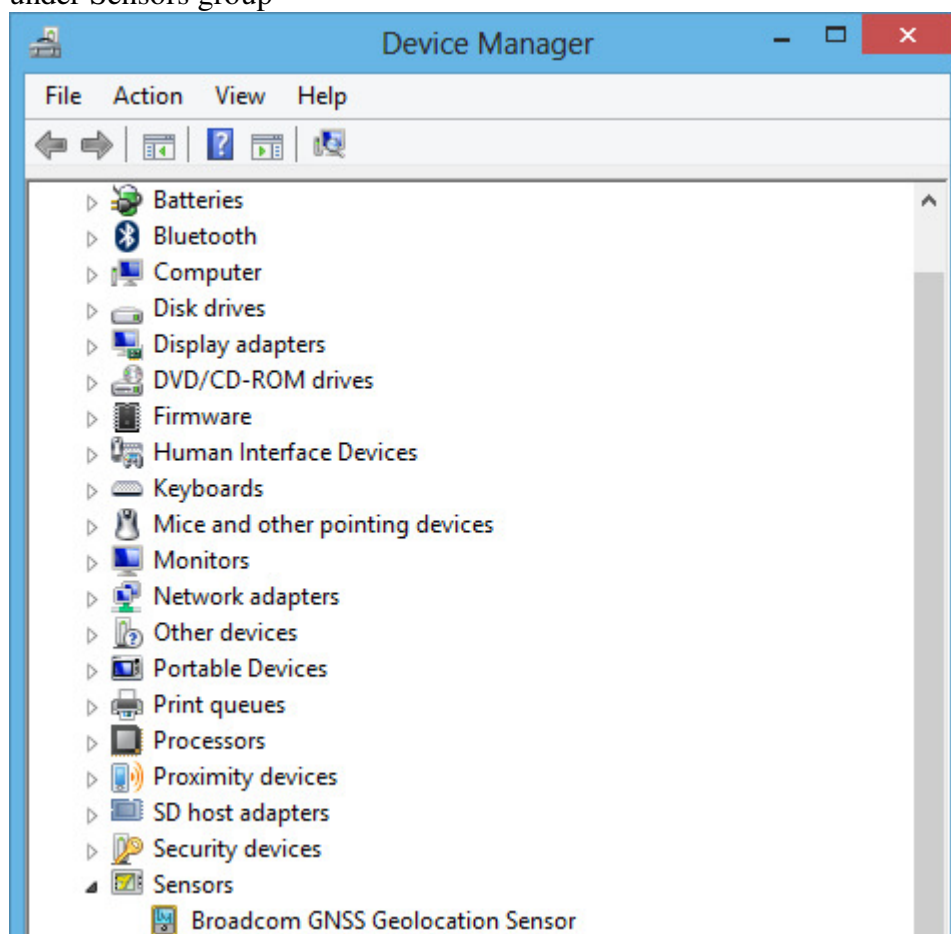


### 1.1.7 Device Manager

For ACPI installer you should see Broadcom GNSS Bus Driver under System devices



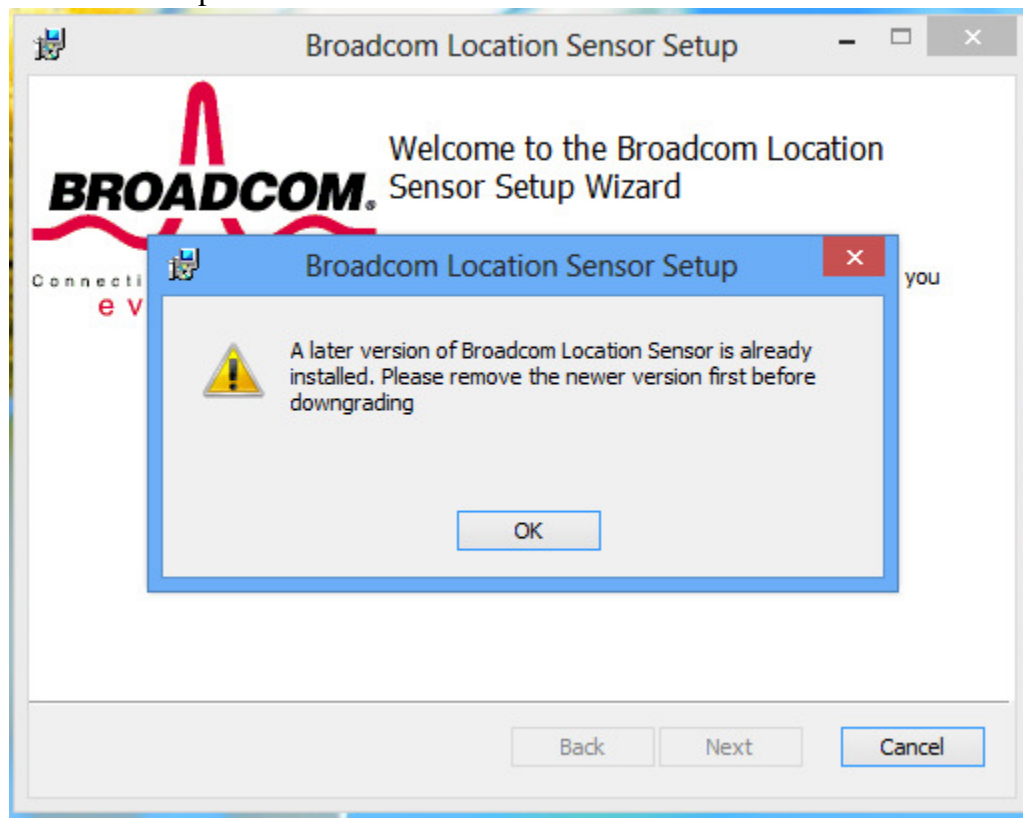
For both ACPI and CP210x installer you should see the Broadcom GNSS Geolocation Sensor under Sensors group



## 1.2 Upgrade

When upgrading, please follow the installation steps describe at section 1.1 except if you are planning to install an older version of the driver. In this case you must uninstall the current version first.

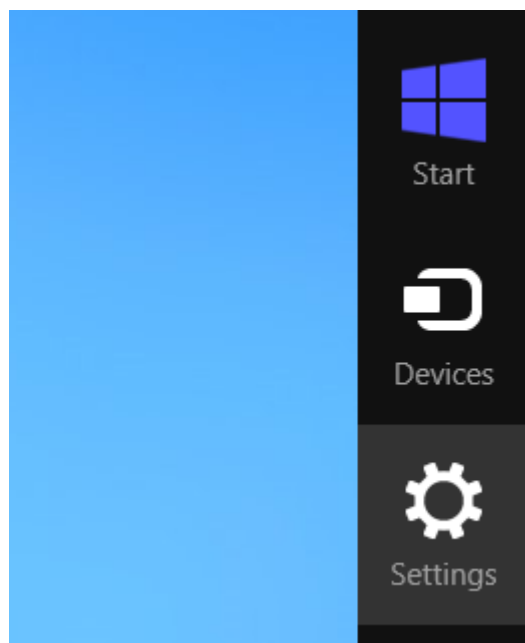




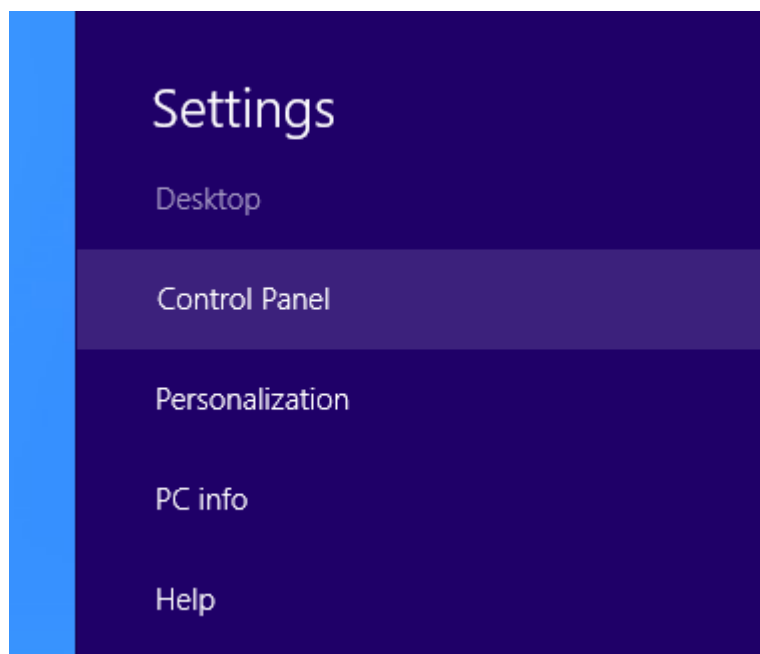
It is always safer to uninstall and reboot before installing a new version of the driver to avoid any possible lock on the driver. If you see the screen as shown in section 1.3.6, then reboot the operating system at the end of the installation and proceed with the installation upon complete restart.

## 1.3 *Interactive Uninstallation*

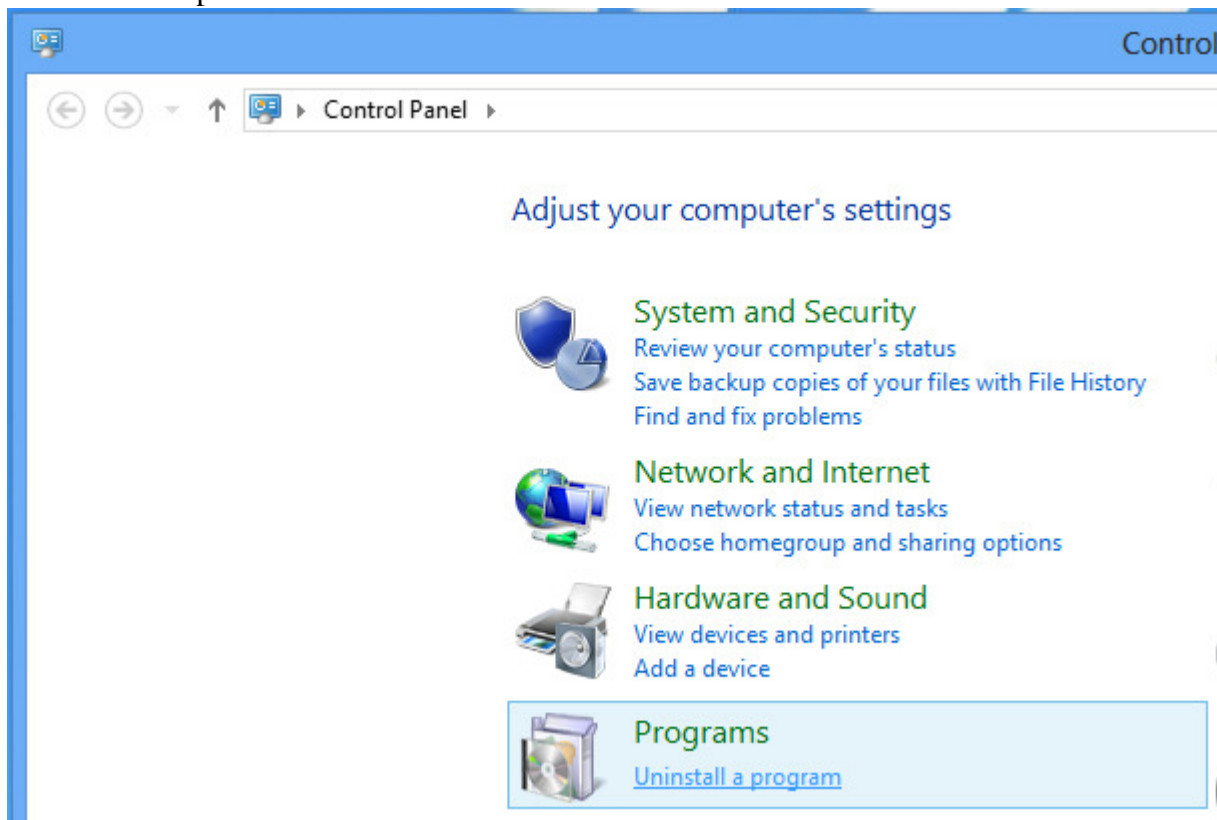
1.3.1 Access the Settings menu. Move your mouse to the right of the screen until you see the following panel then select Settings



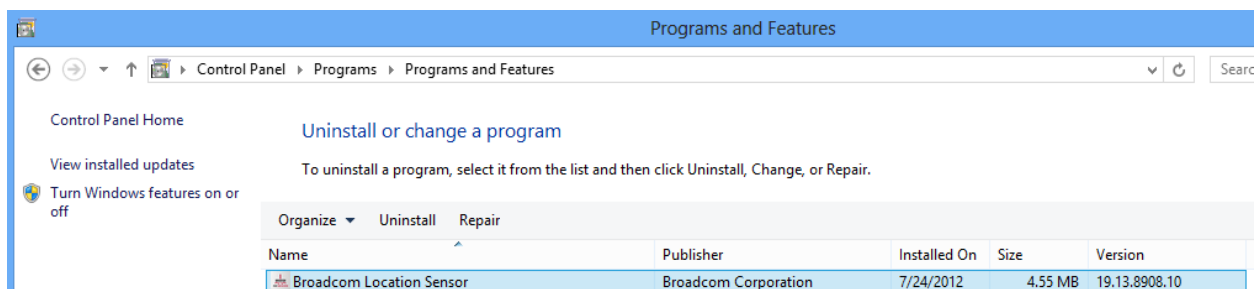
1.3.2 Click on Control Panel



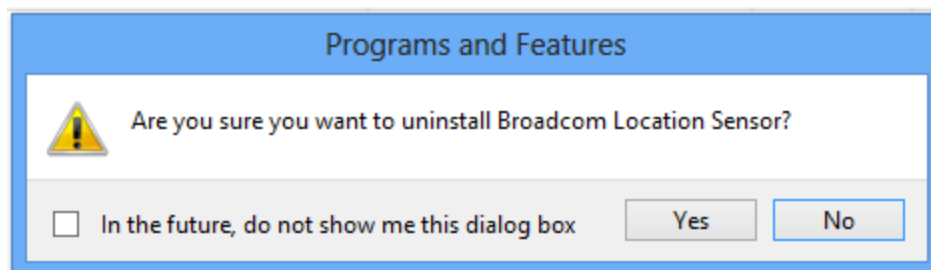
1.3.3 Click on Uninstall a program



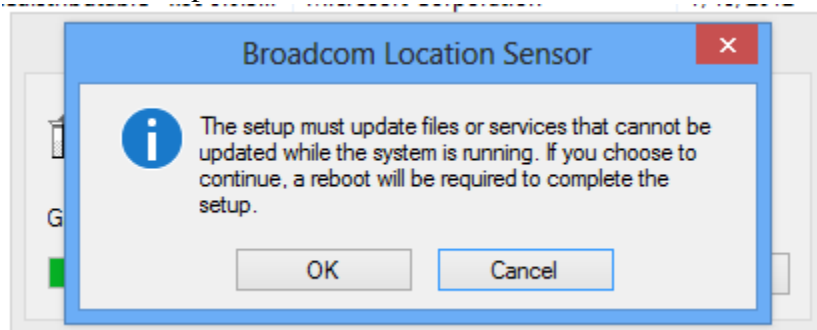
1.3.4 Select Broadcom Location Sensor then click on Uninstall. If you want to Repair your installer in case you uninstall the Location Sensor Driver manually or if you accidentally lose a file click on Repair



1.3.5 Click on Yes



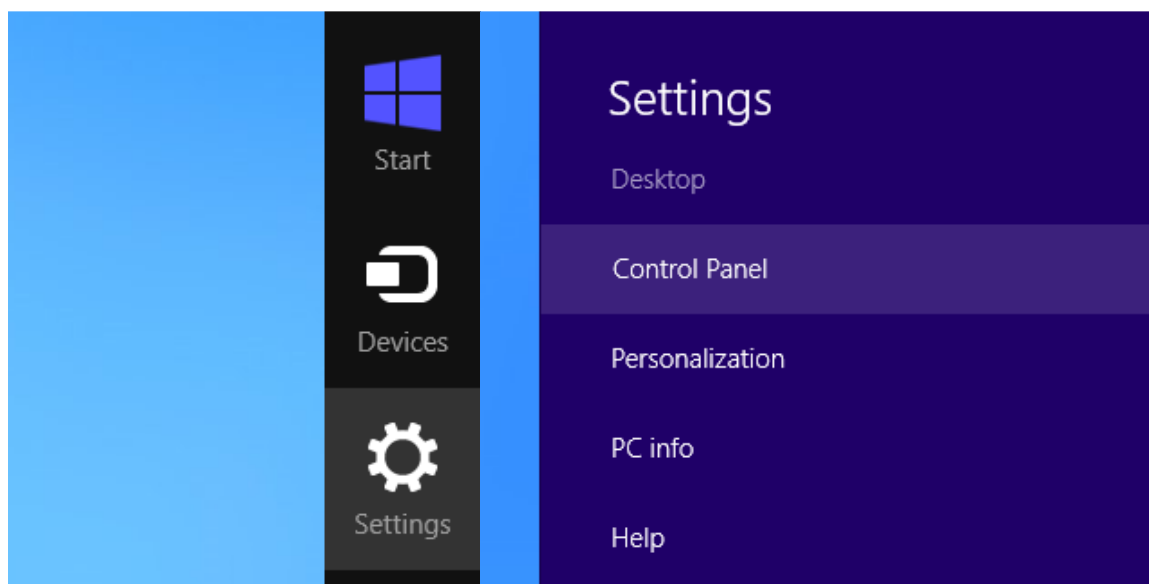
1.3.6 Click on OK if you see the following screen



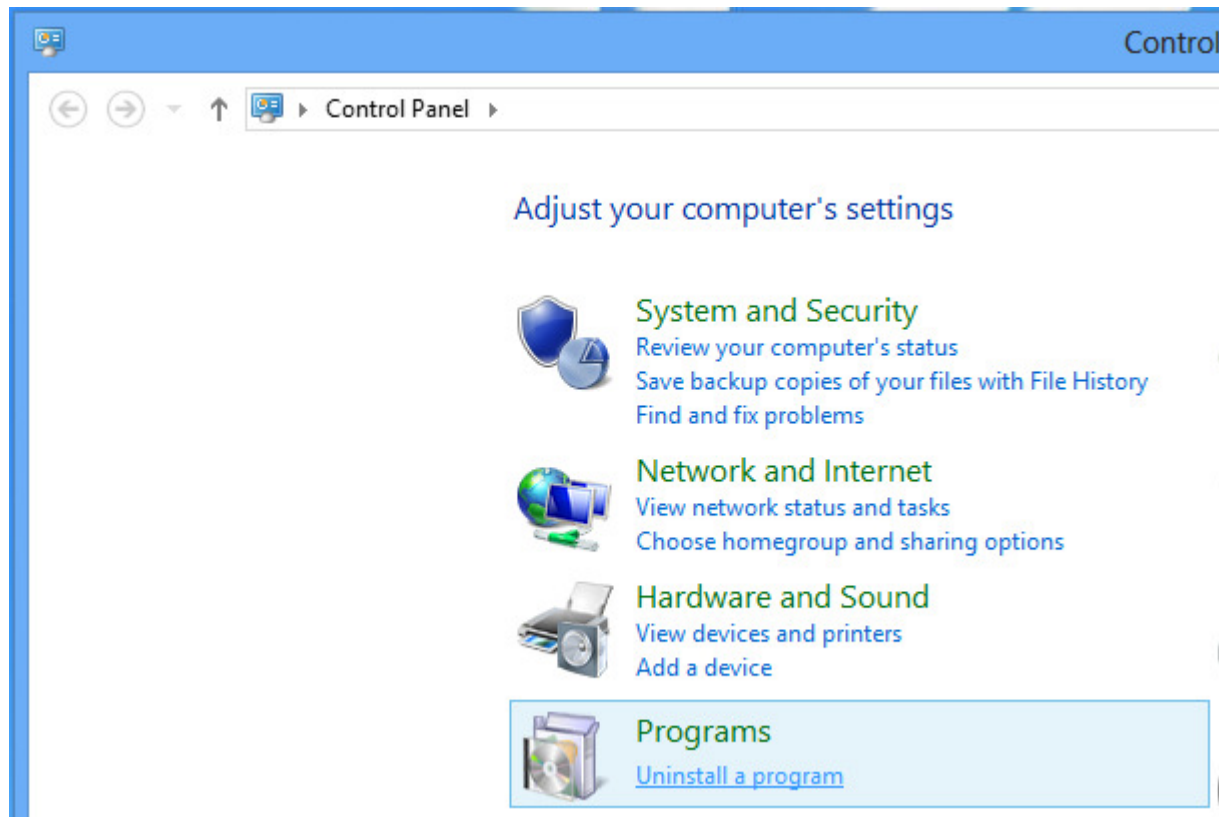
## 1.4 Interactive Maintenance

1.4.1 Access the Settings menu. Move your mouse to the right of the screen until you see the following panel then select Settings

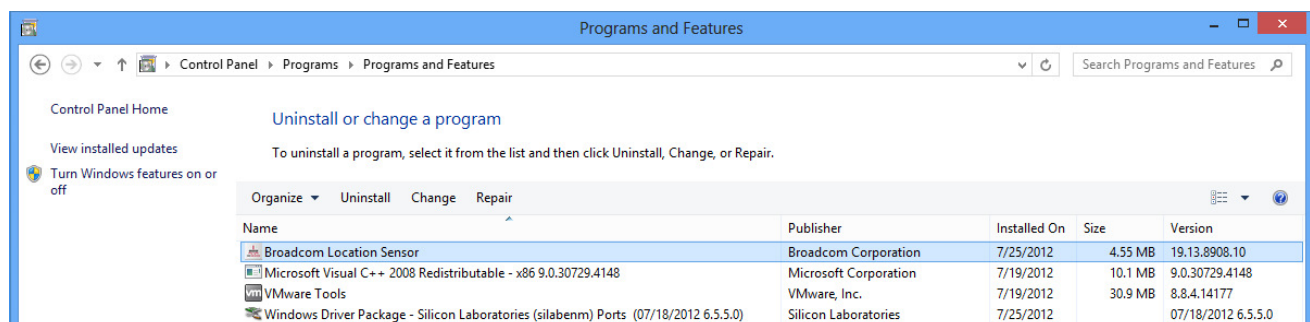
1.4.2 Click on Control Panel



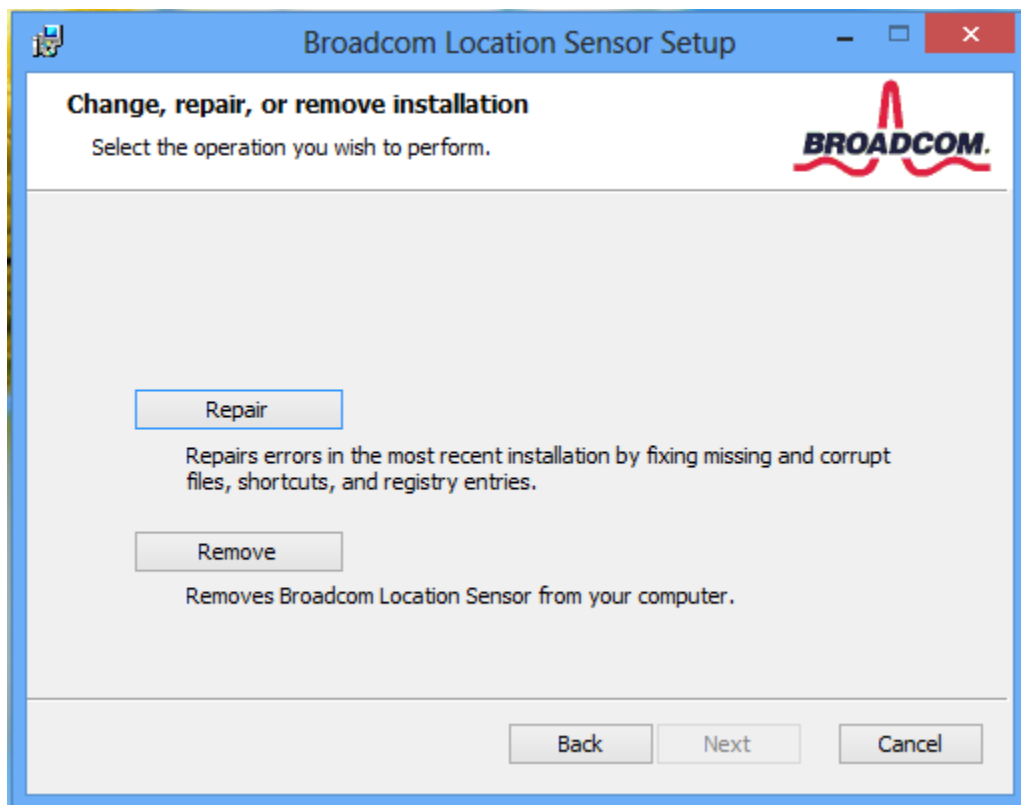
## 1.4.3 Click on Uninstall a program



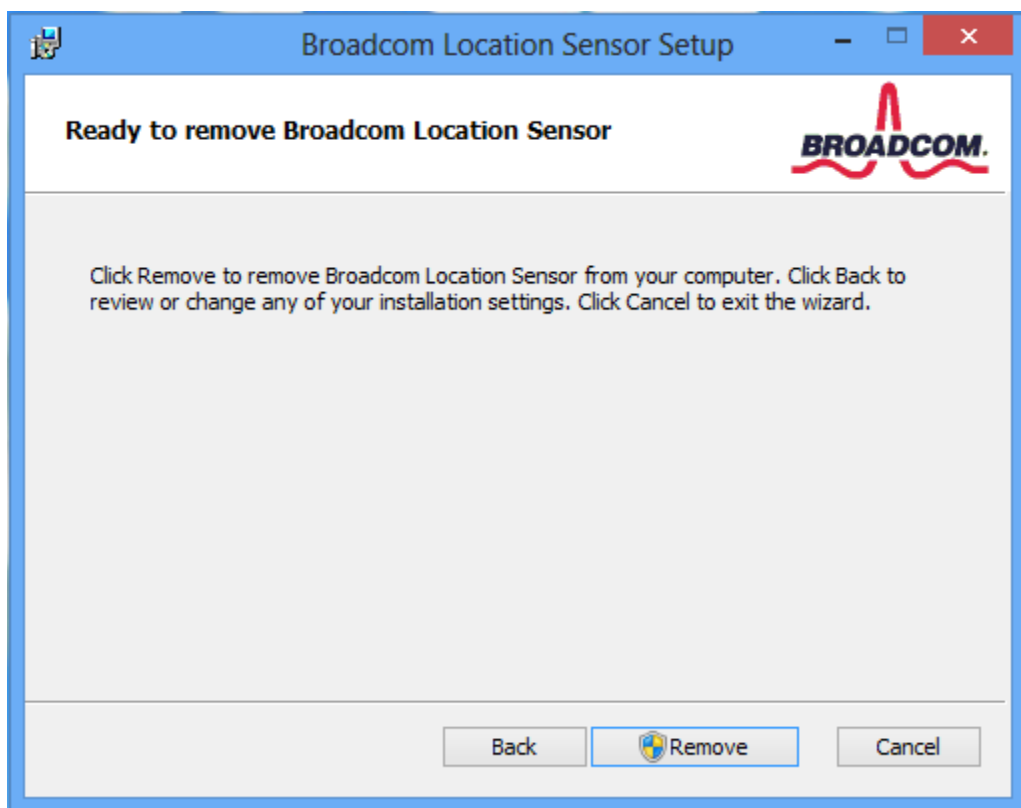
## 1.4.4 Select Broadcom Location Sensor then click on Change or Repair.



## 1.4.5 Select Repair or Remove



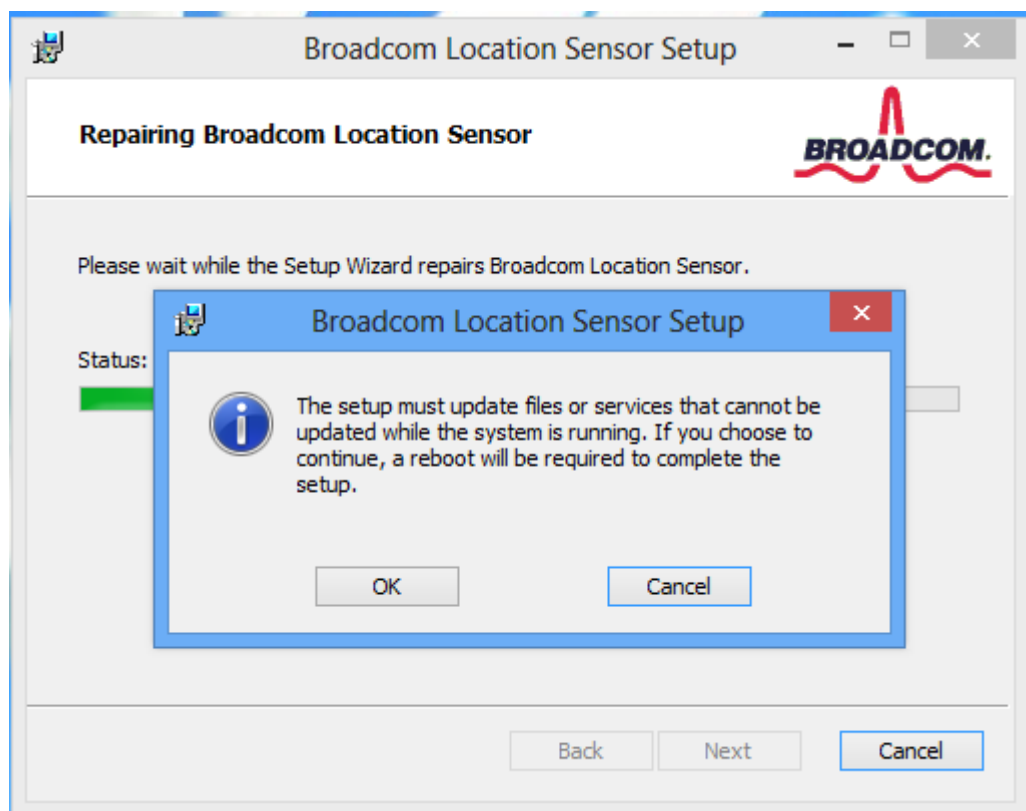
## 1.4.6 Click on Remove if you want to remove



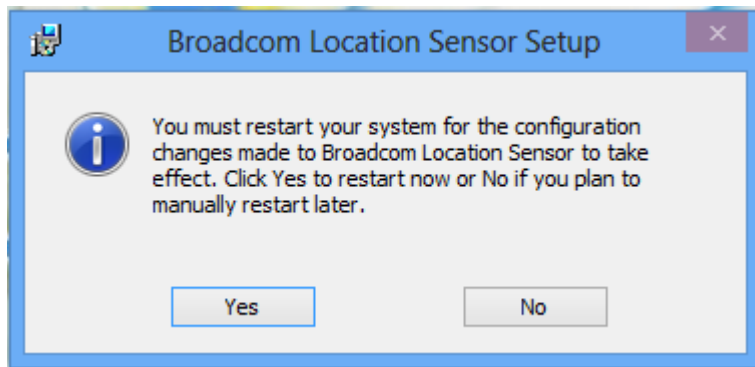
## 1.4.7 Click on Repair if you want to repair



## 1.4.8 Click on Ok



## 1.4.9 Click on Yes



## 1.5 Batch or Silent Installation and Uninstallation

The following subsections describe how to install the software on the command prompt. Syntax for 32-bit Windows Operating System shown, replace "x86" with "x64" for 64-bit Windows Operating Systems. Note that the optional argument /lv log.txt is for creating a log file of the installation process.

## 1.5.1 msixexec (manual OS selection)

- Run the following cmd:

## Installation

- msixexec /i Broadcom\_Location\_\*.msi /qn /norestart /l\*v log.txt

## Uninstallation

- msixexec /x Broadcom\_Location\_\*.msi /qn /norestart /l\*v log.txt

## Restart Options

/norestart

Do not restart after the installation is complete

/promptrestart

Prompts the user for restart if necessary

/forcerestart

Always restart the computer after installation

## 1.5.2 MSI log

Starting with driver 19.15.5030.4 and above during silent installation here is what to look for to see in the MSI log whether the driver(s) have been properly installed or not.

**Property(S): ResultCode=0** means driver(s) installation is successful

**Property(S): ResultCode=1** means reboot is needed

An upgrade was needed for umdf-1.11-Win-6.1.msu. Please reboot your system and restart the installer. Restarting the installation after reboot should lead to Property(S): ResultCode = 0

**Property(S): ResultCode=-1** means driver(s) installation failed but

All driver(s) related files have been deployed under Program File \ Broadcom \ Location

At this point a manual installation of the driver should be possible as well to escalate the issue

**Property(S): ResultCode=2** means ACPI driver installation / uninstallation failed

**Property(S): ResultCode=3** means BcmGnss Location Sensor driver installation / uninstallation failed