



Intel® System Event Log (SEL) Viewer Utility

User Guide

SELViewer Version 10.0 /11.0/12.0

August 2013

Document number: G88216-004

Legal Statements

INFORMATION IN THIS DOCUMENT IS PROVIDED IN CONNECTION WITH INTEL PRODUCTS. NO LICENSE, EXPRESS OR IMPLIED, BY ESTOPPEL OR OTHERWISE, TO ANY INTELLECTUAL PROPERTY RIGHTS IS GRANTED BY THIS DOCUMENT. EXCEPT AS PROVIDED IN INTEL'S TERMS AND CONDITIONS OF SALE FOR SUCH PRODUCTS, INTEL ASSUMES NO LIABILITY WHATSOEVER AND INTEL DISCLAIMS ANY EXPRESS OR IMPLIED WARRANTY, RELATING TO SALE AND/OR USE OF INTEL PRODUCTS INCLUDING LIABILITY OR WARRANTIES RELATING TO FITNESS FOR A PARTICULAR PURPOSE, MERCHANTABILITY, OR INFRINGEMENT OF ANY PATENT, COPYRIGHT OR OTHER INTELLECTUAL PROPERTY RIGHT.

A "Mission Critical Application" is any application in which failure of the Intel Product could result, directly or indirectly, in personal injury or death. SHOULD YOU PURCHASE OR USE INTEL'S PRODUCTS FOR ANY SUCH MISSION CRITICAL APPLICATION, YOU SHALL INDEMNIFY AND HOLD INTEL AND ITS SUBSIDIARIES, SUBCONTRACTORS AND AFFILIATES, AND THE DIRECTORS, OFFICERS, AND EMPLOYEES OF EACH, HARMLESS AGAINST ALL CLAIMS COSTS, DAMAGES, AND EXPENSES AND REASONABLE ATTORNEYS' FEES ARISING OUT OF, DIRECTLY OR INDIRECTLY, ANY CLAIM OF PRODUCT LIABILITY, PERSONAL INJURY, OR DEATH ARISING IN ANY WAY OUT OF SUCH MISSION CRITICAL APPLICATION, WHETHER OR NOT INTEL OR ITS SUBCONTRACTOR WAS NEGLIGENT IN THE DESIGN, MANUFACTURE, OR WARNING OF THE INTEL PRODUCT OR ANY OF ITS PARTS.

Intel may make changes to specifications and product descriptions at any time, without notice. Designers must not rely on the absence or characteristics of any features or instructions marked "reserved" or "undefined". Intel reserves these for future definition and shall have no responsibility whatsoever for conflicts or incompatibilities arising from future changes to them. The information here is subject to change without notice. Do not finalize a design with this information.

The products described in this document may contain design defects or errors known as errata which may cause the product to deviate from published specifications. Current characterized errata are available on request.

Contact your local Intel sales office or your distributor to obtain the latest specifications and before placing your product order.

Copies of documents which have an order number and are referenced in this document, or other Intel literature, may be obtained by calling 1-800-548-4725, or go to: <http://www.intel.com/design/literature>.

Intel® Active Management Technology requires the computer system to have an Intel AMT-enabled chipset, network hardware and software, as well as connection with a power source and a corporate network connection. With regard to notebooks, Intel AMT may not be available or certain capabilities may be limited over a host OS-based VPN or when connecting wirelessly, on battery power, sleeping, hibernating or powered off. For more information, see <http://www.intel.com/technology/manage/iamt/>

Any software source code reprinted in this document is furnished under a software license and may only be used or copied in accordance with the terms of that license. Refer to the license corresponding to the software component provided in the toolkit for details. Portions of this toolkit may be supplied under Open Source License agreements.

Preface

About this Manual

Thank you for purchasing and using the Intel® Server Boards. This version of the utility supports:

- Intel® Server Board S1200V3RP
- Intel® Server Board S1200BT
- Intel® Server Board S1400
- Intel® Server Board S1600
- Intel® Server Board S2400
- Intel® Server Board S2600
- Intel® Server Board S4600

This manual is written for system technicians who are responsible for troubleshooting, upgrading, and repairing this server board. The System Event Log (SEL) Viewer is used to display, clear, or save the SEL log on your server. For the latest information on your server, refer to <http://support.intel.com/support/motherboards/server/>.

Manual Organization

- Chapter 1 – Introduction
- Chapter 2 – Using the Intel® SEL Viewer
- Appendix A – Exit Error Codes

Contents

Legal Statements	ii
Preface	iii
About this Manual	iii
Manual Organization	iii
Figures	v
1. Introduction	1
2. Using the Intel® SEL Viewer	2
Installing the Intel® SEL Viewer	2
Launching the Intel® SEL Viewer	3
Viewing SEL Records in Interpreted Text Format	4
Viewing SEL Records in Hex Format	6
Viewing the Intel® SEL Viewer Information Window	8
Navigating the Intel® SEL Viewer Window	8
Saving the Intel® SEL to a File	9
Viewing the Intel® SEL from a File	9
Checking the Intel® SEL Properties	9
Clearing the Intel® SEL	10
Sorting the Intel® SEL Entries in the UI	10
Go To Option (Linux*-only Feature)	10
Getting Additional Help	10
Uninstalling the Intel® SEL Viewer	11
Appendix A. Exit Error Codes	12

Figures

Figure 1: SEL Viewer Text View	4
Figure 2: SEL Viewer Main Window (Windows* & Linux* OSes).....	5
Figure 3: SEL Log in Hex Format (EFI)	6
Figure 4: SEL Records in Hex Format (Linux*).....	7
Figure 5: Status Box	8
Figure 6: SEL Properties Dialog	9

1. Introduction

The Baseboard Management Controller (BMC) records the details about the system events in a log in flash memory. Each SEL entry is a single system event.

The SEL Viewer utility provides the ability to view system event records stored on the server management storage device of a server. The utility displays the SEL records in either a text or a hexadecimal format. The utility also allows you to save SEL entries to a file and load SEL entries from a file for viewing. You can also reload SEL entries from a server and see properties of SEL entries. The SEL entries can be viewed in two modes: interpreted text mode and hex mode.

This version of the SEL Viewer utility runs on the following OSes.

Operating System	Supported Platforms
UEFI 2.0/2.1/2.3.1	S1200V3RP, S1200BT, S1400, S1600, S2400, S2600, and S4600
Windows Server 2008* R2 SP1 x64	S1200V3RP, S1200BT, S1400, S1600, S2400, S2600, and S4600
Windows Server 2008* SP2 x64 and x32	S1200V3RP, S1200BT, S1400, S1600, S2400, S2600, and S4600
Windows Server 2012*	S1200V3RP, S1400, S1600, S2400, S2600, and S4600
Windows 7* x64 and x32	S2600 Workstations
Windows 8* x64 and x32	S2600 Workstations
WinPE 3.0* x64 and x32	S1200V3RP
SuSE* Linux Enterprise Server 11 SP1	S1200V3RP, S1200BT, S1400, S1600, S2400, S2600, and S4600
SuSE* Linux Enterprise Server 11 SP2	S1200V3RP, S1200BT, S1400, S1600, S2400, S2600, and S4600
Red Hat* Enterprise Linux 6 update 1 x64 and x32	S1200V3RP, S1200BT, S1400, S1600, S2400, S2600, and S4600
Red Hat* Enterprise Linux 6 update 2 x64 and x32	S1200V3RP, S1200BT, S1400, S1600, S2400, S2600, and S4600
Red Hat* Enterprise Linux 6 update 3 x64 and x32	S1200V3RP, S1400, S1600, S2400, S2600, and S4600
Red Hat* Enterprise Linux 6 update 4 x64 and x32	S1200V3RP, S1400, S1600, S2400, S2600, and S4600

Note: SELViewer version may be different across different platforms. Download the supported SELViewer version and build for your platform from Intel Support website. Also refer to the release notes for known issues.

2. Using the Intel® SEL Viewer

Installing the Intel® SEL Viewer

To install the SEL Viewer Utility in EFI, do the following:

1. Copy all the files in the SEL Viewer release directory for EFI to a USB flash drive, or create an EFI-bootable CD.
2. Insert the removable media into the server.
3. Boot the server and press the F2 key when prompted to enter BIOS setup.
4. Go to the Boot Manager menu and select the option to boot to EFI shell.
5. At the EFI shell prompt, type `fsn:` , where `n` is the file system number corresponding to the device that contains the SEL Viewer utility files.

To install the SEL Viewer Utility in Windows* with the standalone installation, do the following:

- **Prerequisites**

Java* Runtime Environment (JRE) must be installed.

1. Install JRE X32 version for supporting WinPE 2.0 (32 bit) OS and JRE X64 version for supporting WinPE 2.1 (EM64T) OS. Installation of JRE in a USB pen drive should be performed on the same version of the operating system; for example, for JRE x32 version use windows 32-bit OS and for JRE x64 version use Windows 64-bit OS.
2. In Windows/WINPE set the JRE path using `PATH=%PATH%;<>:\bin` (where `<>` is the USB directory shown on the cmd prompt such as `D:` or `E:` or the path where java is installed (for example, `c:\Program Files\Java`).
3. While installing JRE on USB pen drive to support WinPE 2.0 and WinPE 2.1, change the installation directory USB pen drive (for example, `g:\`).
4. Copy all files and subdirectories from the utility released location into a folder on the hard drive (for example, `c:\Selview`).
5. Open a command prompt and change to that directory:
 - a. For 32-bit windows, go to folder `c:\Selview\windows\x86\imbdriver`.
 - b. For 64-bit windows, go to folder `c:\Selview\windows\x64\imbdriver`.
6. Execute `install.cmd`.

This installation script will install the Intel IPMI driver. If Microsoft IPMI driver is present, the Intel IPMI driver will not be installed on the system.
7. To run the SEL Viewer Utility, open a command prompt, and change directory to the folder where the `selview.exe` file resides (for example, `cd c:\Selview\windows\x86`).

You can now run the utility.

To install the SEL Viewer Utility in Linux*

- **Prerequisites**

1. Java® Runtime Environment (JRE) must be installed.
2. XServer must be running for the Intel® SEL Viewer GUI to work.

A. Regular Installation:

1. Boot into Linux and unzip the SELViewer utility zip file into a folder on your hard drive.
2. Copy all files and subdirectories from the utility released location into a folder on the hard drive (for example, /home/Selview/Linux).
3. Open a command prompt and change to that directory (for example, `cd /home/Selview/Linux`).
4. Run `selview`.

B. RPM Installation:

1. Boot into Linux and unzip the SELViewer utility zip file into a folder on your hard drive.
2. Copy `selview rpm` from `Linux/RPM` folder to a local folder.
3. Install `selview` utility by using `rpm -Uvh selview-Vxx.x-Bxx.ixxx.rpm`. This will install the utility in `/usr/bin/selview/` folder.
4. In RHEL/SLES after installing the rpm, close the terminal from which rpm was installed and then execute the utility from a new terminal (for example, `# selview`).
5. Run `selview`.

Launching the Intel® SEL Viewer

To launch the SEL Viewer, do the following:

1. Boot to the target OS.
From the directory containing the SEL viewer files, launch the SEL viewer from the EFI shell using the following syntax:

```
selview [/clear | {/save [filename] [/hex]} | /h | /?]
```

Note: A hyphen (-) may be substituted for the forward slash (/).

Examples:

```
selview
```

(This launches the graphical version of the SEL viewer.)

```
selview /clear
```

```
selview /save MyFileName /hex
```

```
selview /h
```

Viewing SEL Records in Interpreted Text Format

1. Launch the SEL Viewer.
2. The graphical display will display all the SEL entries. The following example shows the text view.



The screenshot shows the SEL Viewer application window with a menu bar (File, SEL, View, Help) and a title bar (SEL Viewer v3.0.1 Build 4). The main area displays a table of SEL records. The first record is selected, and its details are shown in a separate section at the bottom.

Num	Time Stamp	Sensor Type, Name & Number
1	07/02/2010-11:27:15	Event Logging Disabled, System Event Log (#0x7)
2	07/02/2010-11:33:26	Fan, Fan 8 Present (#0x48)
3	07/02/2010-11:33:27	Fan, Fan Redundancy (#0x46)
4	07/02/2010-11:33:27	Fan, Fan Redundancy (#0x46)
5	07/02/2010-11:33:27	Fan, Fan Redundancy (#0x46)
6	07/02/2010-11:33:27	Fan, Fan 8 Present (#0x48)
7	07/02/2010-11:33:28	Fan, Fan Redundancy (#0x46)
8	07/02/2010-11:33:28	Fan, Fan Redundancy (#0x46)
9	07/02/2010-11:33:28	Fan, Fan Redundancy (#0x46)
10	07/02/2010-11:33:29	Fan, Fan 3 Present (#0x42)

NUM	:1
TIME STAMP	:07/02/2010-11:27:15
SENSOR TYPE & NUM	:Event Logging Disabled, System Event Log (#0x7)
GENERATOR ID	:BMC - LUN#0 (Channel#0)
EVENT DESCRIPTION	:Informational event: System Event Log reports the log area : has been cleared.

Use arrow keys and <Enter> to select from menu.

Figure 1: SEL Viewer Text View

The EFI-based SEL Viewer's main window is based on a multi-column display pane as shown in Figure 1. It displays all the SEL records and a pull-down menu used for selecting the main functions available in the utility.

See Figure 2 for SEL Viewer Main Utility Window (Windows* & Linux* OSes). The default format in which information is displayed in interactive mode is the interpreted text format.

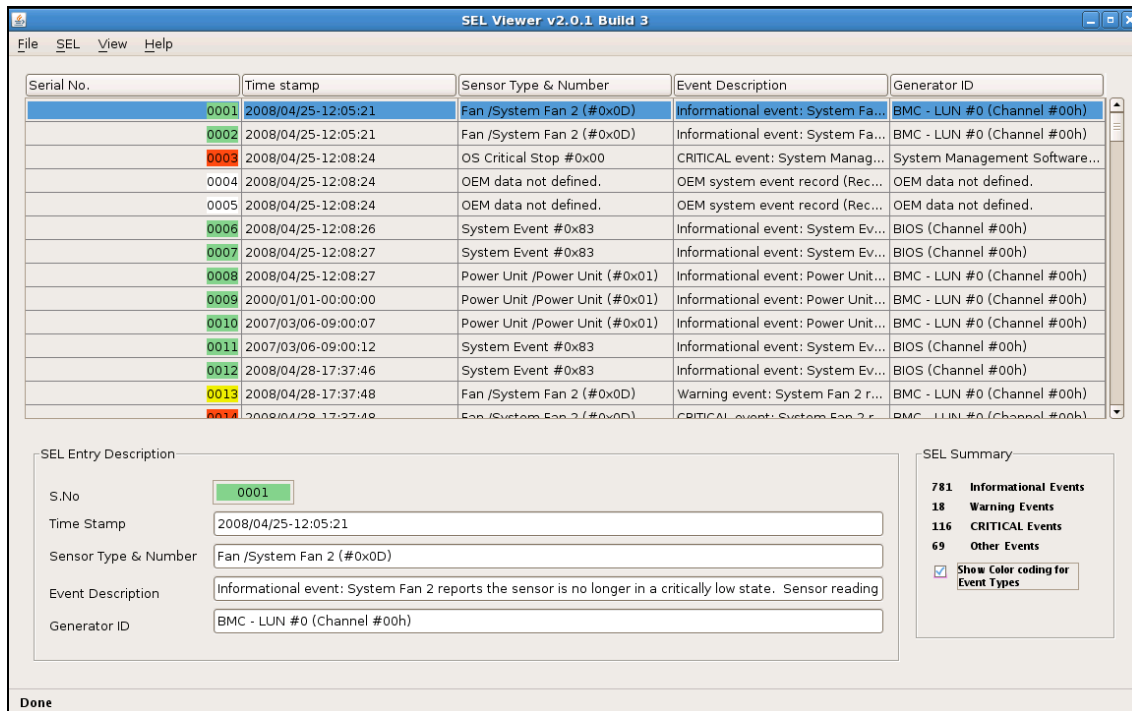


Figure 2: SEL Viewer Main Window (Windows* & Linux* OSes)

The interpreted data is displayed in several columns as follows:

- Serial number of the system events being displayed. Starting with 1, and increasing by one for each event. The title of this column is “Num”.
- Time Stamp.
- Sensor Type and Number.
- Event Description¹
- Generator ID.

The bottom information pane shows the details on the highlighted SEL entry. Use the arrow keys to move up and down, or the Tab key to highlight a menu. In Linux*, the bottom information pane contains a statistics panel which holds a statistical table of events based on their Event Type (Critical, Warning, Informational, and Others).

For information on using the menu items see section *Viewing the Intel® SEL Viewer Information Window*.

¹ Based on the *IPMI Specification, BIOS EPS*

Viewing SEL Records in Hex Format

Use the **View** menu to choose how the SEL entries are displayed (raw hexadecimal format or plain text). Select the raw-hexadecimal format to view the SEL records in HEX format.

The following screen shows an example of the SEL log in Hex format.

SEL Viewer v3.0.1 Build 4					
File SEL View Help					
RID: [01] [00]	RT: [02]	TS: [13] [CD] [2D] [4C]	GID: [20] [00]	ER: [04]	ST: [10]
RID: [02] [00]	RT: [02]	TS: [86] [CE] [2D] [4C]	GID: [20] [00]	ER: [04]	ST: [04]
RID: [03] [00]	RT: [02]	TS: [87] [CE] [2D] [4C]	GID: [20] [00]	ER: [04]	ST: [04]
RID: [04] [00]	RT: [02]	TS: [87] [CE] [2D] [4C]	GID: [20] [00]	ER: [04]	ST: [04]
RID: [05] [00]	RT: [02]	TS: [87] [CE] [2D] [4C]	GID: [20] [00]	ER: [04]	ST: [04]
RID: [06] [00]	RT: [02]	TS: [87] [CE] [2D] [4C]	GID: [20] [00]	ER: [04]	ST: [04]
RID: [07] [00]	RT: [02]	TS: [88] [CE] [2D] [4C]	GID: [20] [00]	ER: [04]	ST: [04]
RID: [08] [00]	RT: [02]	TS: [88] [CE] [2D] [4C]	GID: [20] [00]	ER: [04]	ST: [04]
RID: [09] [00]	RT: [02]	TS: [88] [CE] [2D] [4C]	GID: [20] [00]	ER: [04]	ST: [04]
RID: [0A] [00]	RT: [02]	TS: [89] [CE] [2D] [4C]	GID: [20] [00]	ER: [04]	ST: [04]
RID: [0B] [00]	RT: [02]	TS: [89] [CE] [2D] [4C]	GID: [20] [00]	ER: [04]	ST: [04]
RID: [0C] [00]	RT: [02]	TS: [89] [CE] [2D] [4C]	GID: [20] [00]	ER: [04]	ST: [04]
RID: [0D] [00]	RT: [02]	TS: [89] [CE] [2D] [4C]	GID: [20] [00]	ER: [04]	ST: [04]
RID: [0E] [00]	RT: [02]	TS: [8A] [CE] [2D] [4C]	GID: [20] [00]	ER: [04]	ST: [04]
RID: [0F] [00]	RT: [02]	TS: [8A] [CE] [2D] [4C]	GID: [20] [00]	ER: [04]	ST: [04]
RID: [10] [00]	RT: [02]	TS: [8A] [CE] [2D] [4C]	GID: [20] [00]	ER: [04]	ST: [04]
RID: [11] [00]	RT: [02]	TS: [8A] [CE] [2D] [4C]	GID: [20] [00]	ER: [04]	ST: [04]
RID: [12] [00]	RT: [02]	TS: [6D] [D3] [2D] [4C]	GID: [01] [00]	ER: [04]	ST: [12]
RID: [13] [00]	RT: [02]	TS: [6F] [D3] [2D] [4C]	GID: [20] [00]	ER: [04]	ST: [09]
RID: [14] [00]	RT: [02]	TS: [6F] [D3] [2D] [4C]	GID: [20] [00]	ER: [04]	ST: [09]

Use arrow keys and <Enter> to select from menu.

Figure 3: SEL Log in Hex Format (EFI)

The following figure shows SEL records in Hex format (Windows* & Linux* OSes).

Num	SEL Hex Bytes
1	RID:[01][00] RT:[02] TS:[70][EF][30][4F] GID:[20][00] ER:[04] ST:[10] SN:[07] EDIR:[6F] ED1:[02] ED2:[FF] ED3:[FF] ExB1:[00] ExB2:[FF] ExB3:[FF] ExB4:[FF] ExB5:[FF] ExB6:[FF] ExB7:[FF] ExB8:[FF]
2	RID:[02][00] RT:[02] TS:[74][EF][30][4F] GID:[20][00] ER:[04] ST:[07] SN:[70] EDIR:[6F] ED1:[07] ED2:[FF] ED3:[FF] ExB1:[00] ExB2:[FF] ExB3:[FF] ExB4:[FF] ExB5:[FF] ExB6:[FF] ExB7:[FF] ExB8:[FF]
3	RID:[03][00] RT:[02] TS:[71][EF][30][4F] GID:[20][00] ER:[04] ST:[05] SN:[04] EDIR:[6F] ED1:[00] ED2:[FF] ED3:[FF] ExB1:[00] ExB2:[FF] ExB3:[FF] ExB4:[FF] ExB5:[FF] ExB6:[FF] ExB7:[FF] ExB8:[FF]
4	RID:[04][00] RT:[02] TS:[71][EF][30][4F] GID:[20][00] ER:[04] ST:[04] SN:[0C] EDIR:[88] ED1:[00] ED2:[FF] ED3:[FF] ExB1:[00] ExB2:[FF] ExB3:[FF] ExB4:[FF] ExB5:[FF] ExB6:[FF] ExB7:[FF] ExB8:[FF]
5	RID:[05][00] RT:[02] TS:[71][EF][30][4F] GID:[20][00] ER:[04] ST:[04] SN:[0C] EDIR:[08] ED1:[01] ED2:[FF] ED3:[FF] ExB1:[01] ExB2:[FF] ExB3:[FF] ExB4:[FF] ExB5:[FF] ExB6:[FF] ExB7:[FF] ExB8:[FF]
6	RID:[06][00] RT:[02] TS:[71][EF][30][4F] GID:[20][00] ER:[04] ST:[04] SN:[0C] EDIR:[08] ED1:[05] ED2:[FF] ED3:[FF] ExB1:[02] ExB2:[FF] ExB3:[FF] ExB4:[FF] ExB5:[FF] ExB6:[FF] ExB7:[FF] ExB8:[FF]
7	RID:[07][00] RT:[02] TS:[74][EF][30][4F] GID:[20][00] ER:[04] ST:[08] SN:[50] EDIR:[6F] ED1:[86] ED2:[01] ED3:[FF] ExB1:[00] ExB2:[FF] ExB3:[FF] ExB4:[FF] ExB5:[FF] ExB6:[FF] ExB7:[FF] ExB8:[FF]
8	RID:[08][00] RT:[02] TS:[7C][EF][30][4F] GID:[20][00] ER:[04] ST:[04] SN:[37] EDIR:[01] ED1:[50] ED2:[00] ED3:[04] ExB1:[01] ExB2:[FF] ExB3:[FF] ExB4:[FF] ExB5:[FF] ExB6:[FF] ExB7:[FF] ExB8:[FF]
9	RID:[09][00] RT:[02] TS:[7C][EF][30][4F] GID:[20][00] ER:[04] ST:[04] SN:[37] EDIR:[01] ED1:[52] ED2:[00] ED3:[03] ExB1:[02] ExB2:[FF] ExB3:[FF] ExB4:[FF] ExB5:[FF] ExB6:[FF] ExB7:[FF] ExB8:[FF]
10	RID:[0A][00] RT:[02] TS:[7C][EF][30][4F] GID:[20][00] ER:[04] ST:[04] SN:[38] EDIR:[01] ED1:[50] ED2:[00] ED3:[04] ExB1:[01] ExB2:[FF] ExB3:[FF] ExB4:[FF] ExB5:[FF] ExB6:[FF] ExB7:[FF] ExB8:[FF]
11	RID:[0B][00] RT:[02] TS:[7C][EF][30][4F] GID:[20][00] ER:[04] ST:[04] SN:[38] EDIR:[01] ED1:[52] ED2:[00] ED3:[03] ExB1:[02] ExB2:[FF] ExB3:[FF] ExB4:[FF] ExB5:[FF] ExB6:[FF] ExB7:[FF] ExB8:[FF]
12	RID:[0C][00] RT:[02] TS:[17][F1][30][4F] GID:[20][00] ER:[04] ST:[09] SN:[01] EDIR:[6F] ED1:[00] ED2:[FF] ED3:[FF] ExB1:[00] ExB2:[FF] ExB3:[FF] ExB4:[FF] ExB5:[FF] ExB6:[FF] ExB7:[FF] ExB8:[FF]
13	RID:[0D][00] RT:[02] TS:[17][F1][30][4F] GID:[20][00] ER:[04] ST:[09] SN:[02] EDIR:[88] ED1:[00] ED2:[FF] ED3:[FF] ExB1:[00] ExB2:[FF] ExB3:[FF] ExB4:[FF] ExB5:[FF] ExB6:[FF] ExB7:[FF] ExB8:[FF]
14	RID:[0E][00] RT:[02] TS:[17][F1][30][4F] GID:[20][00] ER:[04] ST:[09] SN:[02] EDIR:[08] ED1:[01] ED2:[FF] ED3:[FF] ExB1:[01] ExB2:[FF] ExB3:[FF] ExB4:[FF] ExB5:[FF] ExB6:[FF] ExB7:[FF] ExB8:[FF]
15	RID:[0F][00] RT:[02] TS:[17][F1][30][4F] GID:[20][00] ER:[04] ST:[09] SN:[02] EDIR:[08] ED1:[03] ED2:[FF] ED3:[FF] ExB1:[01] ExB2:[FF] ExB3:[FF] ExB4:[FF] ExB5:[FF] ExB6:[FF] ExB7:[FF] ExB8:[FF]
16	RID:[10][00] RT:[02] TS:[17][F1][30][4F] GID:[20][00] ER:[04] ST:[14] SN:[09] EDIR:[6F] ED1:[00] ED2:[FF] ED3:[FF] ExB1:[00] ExB2:[FF] ExB3:[FF] ExB4:[FF] ExB5:[FF] ExB6:[FF] ExB7:[FF] ExB8:[FF]
17	RID:[11][00] RT:[02] TS:[17][F1][30][4F] GID:[20][00] ER:[04] ST:[0C] SN:[C0] EDIR:[6F] ED1:[2A] ED2:[FF] ED3:[01] ExB1:[03] ExB2:[FF] ExB3:[FF] ExB4:[FF] ExB5:[FF] ExB6:[FF] ExB7:[FF] ExB8:[FF]
18	RID:[12][00] RT:[02] TS:[17][F1][30][4F] GID:[20][00] ER:[04] ST:[0C] SN:[C1] EDIR:[6F] ED1:[2A] ED2:[FF] ED3:[21] ExB1:[03] ExB2:[FF] ExB3:[FF] ExB4:[FF] ExB5:[FF] ExB6:[FF] ExB7:[FF] ExB8:[FF]
19	RID:[13][00] RT:[02] TS:[42][F1][30][4F] GID:[20][00] ER:[04] ST:[05] SN:[04] EDIR:[6F] ED1:[00] ED2:[FF] ED3:[FF] ExB1:[00] ExB2:[FF] ExB3:[FF] ExB4:[FF] ExB5:[FF] ExB6:[FF] ExB7:[FF] ExB8:[FF]
20	RID:[14][00] RT:[02] TS:[42][F1][30][4F] GID:[20][00] ER:[04] ST:[07] SN:[70] EDIR:[6F] ED1:[07] ED2:[FF] ED3:[FF] ExB1:[00] ExB2:[FF] ExB3:[FF] ExB4:[FF] ExB5:[FF] ExB6:[FF] ExB7:[FF] ExB8:[FF]
21	RID:[15][00] RT:[02] TS:[43][F1][30][4F] GID:[20][00] ER:[04] ST:[04] SN:[0C] EDIR:[88] ED1:[00] ED2:[FF] ED3:[FF] ExB1:[00] ExB2:[FF] ExB3:[FF] ExB4:[FF] ExB5:[FF] ExB6:[FF] ExB7:[FF] ExB8:[FF]
22	RID:[16][00] RT:[02] TS:[43][F1][30][4F] GID:[20][00] ER:[04] ST:[04] SN:[0C] EDIR:[08] ED1:[01] ED2:[FF] ED3:[FF] ExB1:[01] ExB2:[FF] ExB3:[FF] ExB4:[FF] ExB5:[FF] ExB6:[FF] ExB7:[FF] ExB8:[FF]
23	RID:[17][00] RT:[02] TS:[43][F1][30][4F] GID:[20][00] ER:[04] ST:[04] SN:[0C] EDIR:[08] ED1:[05] ED2:[FF] ED3:[FF] ExB1:[02] ExB2:[FF] ExB3:[FF] ExB4:[FF] ExB5:[FF] ExB6:[FF] ExB7:[FF] ExB8:[FF]
24	RID:[18][00] RT:[02] TS:[46][F1][30][4F] GID:[20][00] ER:[04] ST:[08] SN:[50] EDIR:[6F] ED1:[86] ED2:[01] ED3:[FF] ExB1:[00] ExB2:[FF] ExB3:[FF] ExB4:[FF] ExB5:[FF] ExB6:[FF] ExB7:[FF] ExB8:[FF]
25	RID:[19][00] RT:[02] TS:[40][F1][30][4F] GID:[20][00] ER:[04] ST:[04] SN:[37] EDIR:[01] ED1:[50] ED2:[00] ED3:[04] ExB1:[01] ExB2:[FF] ExB3:[FF] ExB4:[FF] ExB5:[FF] ExB6:[FF] ExB7:[FF] ExB8:[FF]
26	RID:[1A][00] RT:[02] TS:[40][F1][30][4F] GID:[20][00] ER:[04] ST:[04] SN:[37] EDIR:[01] ED1:[52] ED2:[00] ED3:[03] ExB1:[02] ExB2:[FF] ExB3:[FF] ExB4:[FF] ExB5:[FF] ExB6:[FF] ExB7:[FF] ExB8:[FF]
27	RID:[1B][00] RT:[02] TS:[40][F1][30][4F] GID:[20][00] ER:[04] ST:[04] SN:[38] EDIR:[01] ED1:[50] ED2:[00] ED3:[04] ExB1:[01] ExB2:[FF] ExB3:[FF] ExB4:[FF] ExB5:[FF] ExB6:[FF] ExB7:[FF] ExB8:[FF]
28	RID:[1C][00] RT:[02] TS:[40][F1][30][4F] GID:[20][00] ER:[04] ST:[04] SN:[38] EDIR:[01] ED1:[52] ED2:[00] ED3:[03] ExB1:[02] ExB2:[FF] ExB3:[FF] ExB4:[FF] ExB5:[FF] ExB6:[FF] ExB7:[FF] ExB8:[FF]
29	RID:[1D][00] RT:[02] TS:[40][F1][30][4F] GID:[01][00] ER:[04] ST:[12] SN:[83] EDIR:[6F] ED1:[05] ED2:[00] ED3:[FF] ExB1:[00] ExB2:[FF] ExB3:[FF] ExB4:[FF] ExB5:[FF] ExB6:[FF] ExB7:[FF] ExB8:[FF]
30	RID:[1E][00] RT:[02] TS:[4E][F1][30][4F] GID:[01][00] ER:[04] ST:[12] SN:[83] EDIR:[6F] ED1:[05] ED2:[80] ED3:[FF] ExB1:[00] ExB2:[FF] ExB3:[FF] ExB4:[FF] ExB5:[FF] ExB6:[FF] ExB7:[FF] ExB8:[FF]
31	RID:[1F][00] RT:[02] TS:[3C][F3][30][4F] GID:[01][00] ER:[04] ST:[12] SN:[83] EDIR:[6F] ED1:[01] ED2:[FF] ED3:[FF] ExB1:[00] ExB2:[FF] ExB3:[FF] ExB4:[FF] ExB5:[FF] ExB6:[FF] ExB7:[FF] ExB8:[FF]
32	RID:[20][00] RT:[02] TS:[93][F4][30][4F] GID:[20][00] ER:[04] ST:[28] SN:[12] EDIR:[70] ED1:[00] ED2:[00] ED3:[FF] ExB1:[01] ExB2:[01] ExB3:[04] ExB4:[D6] ExB5:[0A] ExB6:[00] ExB7:[00] ExB8:[FF]
33	RID:[21][00] RT:[02] TS:[10][F5][30][4F] GID:[20][00] ER:[04] ST:[28] SN:[12] EDIR:[70] ED1:[01] ED2:[00] ED3:[FF] ExB1:[60] ExB2:[00] ExB3:[32] ExB4:[D0] ExB5:[0A] ExB6:[00] ExB7:[00] ExB8:[FF]
34	RID:[22][00] RT:[02] TS:[43][F5][30][4F] GID:[20][00] ER:[04] ST:[05] SN:[04] EDIR:[6F] ED1:[00] ED2:[FF] ED3:[FF] ExB1:[00] ExB2:[FF] ExB3:[FF] ExB4:[FF] ExB5:[FF] ExB6:[FF] ExB7:[FF] ExB8:[FF]
35	RID:[23][00] RT:[02] TS:[43][F5][30][4F] GID:[20][00] ER:[04] ST:[07] SN:[70] EDIR:[6F] ED1:[07] ED2:[FF] ED3:[FF] ExB1:[00] ExB2:[FF] ExB3:[FF] ExB4:[FF] ExB5:[FF] ExB6:[FF] ExB7:[FF] ExB8:[FF]
36	RID:[24][00] RT:[02] TS:[44][F5][30][4F] GID:[20][00] ER:[04] ST:[04] SN:[0C] EDIR:[88] ED1:[00] ED2:[FF] ED3:[FF] ExB1:[00] ExB2:[FF] ExB3:[FF] ExB4:[FF] ExB5:[FF] ExB6:[FF] ExB7:[FF] ExB8:[FF]

Figure 4: SEL Records in Hex Format (Linux*)

The abbreviations used in the raw Hex display are as shown in the following table.

Acronym	Description
RID	Record ID
RT	Record Type
TS	Time Stamp
GID	Generator ID
ER	Event Message Format Revision
ST	Sensor Type
SN	Sensor Number
EDIR	Event Dir and Event Type
ED1, ED2, ED3	Event Data
MID	Manufacturer ID
OEM	OEM Defined
ExB1...ExB8	Extended Byte1...Extended Byte8 (Supported only on S1200V3RP, S1400, S1600, S2400, S2600, and S4600 Server Platforms)

Viewing the Intel® SEL Viewer Information Window

This option allows you to view/hide the SEL Information window. When you run the utility, by default, the SEL Info window is visible and the sub-menu is shown as **Hide SEL Info Window**. If you select **Hide SEL Info Window**, the SEL Info window is removed from the display area and the sub-menu text changes to **View SEL Info Window**. You can again add the SEL Info window using this sub-menu. **Hide SEL Info Window / View SEL Info Window** option is currently disabled in Hex view of EFI-based SEL Viewer utility. The SEL Info window automatically goes off when you change from text view to hex view. In case of Linux*, this option is available under the SEL Menu item.

Navigating the Intel® SEL Viewer Window

To navigate the SEL Viewer window from the pull-down menu, use the arrow keys to move around the various menu items and the <Enter> key to select a particular menu item. For WinPE*-based SEL Viewer Utility, use <Alt> key to select the menu and use arrow keys to move around various menu items and <Enter> key to select a particular menu item. For WinPE*-based SEL Viewer utility, use <Alt-F> to open file menu item, <Alt-S> to open SEL menu, <Alt-V> to open view menu, and <Alt-H> to open Help menu. In case of WinPE*-based SEL Viewer utility, a menu item can be accessed by left clicking the mouse on the menu item. A brief help message about the option selected from the menu is displayed in the tip-view window, which is displayed at the bottom of the main window for EFI-based SEL Viewer Utility. This feature is not supported by WinPE*-based SEL Viewer Utility. For EFI-based SEL Viewer Utility, use <Tab> to move between the display pane, information window at the bottom and pull-down menu.

The display pane supports arrow keys, <PgDn>, <PgUp>, <Home>, and <End> keys to move across the display pane. For WinPE*-based SEL Viewer utility, <Home> key selects the first record and <End> key selects the last record. For EFI-based SEL Viewer utility, <HOME> key selects the beginning of the selected SEL entry in the display pane, and <END> key selects the end of the selected SEL entry in the display pane. EFI-based SEL Viewer Utility supports the <F5> key to move forward between columns and <F6> to move backwards. Use left arrow key to scroll to the left and right arrow key to scroll to right in display pane.

When the utility is first invoked, it loads the SEL records from non-volatile storage on the server. A status box as shown in Figure 5 is displayed to indicate that the SEL Viewer is loading SEL records from the server. In Linux*, the status message is displayed on the status bar of the Utility main window.



Figure 5: Status Box

In Windows* & Linux* SEL Viewer Utility, Serial Numbers can be color coded based on the severity of a SEL Event. This feature is currently available only on Windows* & Linux*. A small panel is provided on the bottom right corner which has a statistical view of the SEL Records. It

contains the count of the SEL events segregated based on the severity type (that is, Informational, Warning, Critical, and Others). This feature is also currently available only on Windows* & Linux*.

Saving the Intel® SEL to a File

You may want to save the SEL to a file for analysis, record keeping, or documentation of a system issue.

There are two ways to save the SEL to a file (the Windows Preboot Environment* version is shown in this example):

- To save the SEL, use the following command line syntax:

In interpreted text format: **selview /save MyFileName**

In hex format: **selview /save MyFileName /hex**

- Use the **File | Save** menu option from the graphical SEL viewer window.

To save the SEL data to a file with a .sel file name extension, either in interpreted text format or in raw hex format, depending on the mode in which records are currently displayed.

Viewing the Intel® SEL from a File

To view the SEL records that you previously saved to a file, use the **File | Open** menu option from the graphical SEL viewer window.

To return to viewing the SEL records from non-volatile memory, use the **SEL | Reload** menu option.

Checking the Intel® SEL Properties

To check the SEL properties (number of entries, add/erase time, space available, and so on) in the SEL Properties dialog, use the **SEL | Properties** menu option from the graphical SEL viewer window.

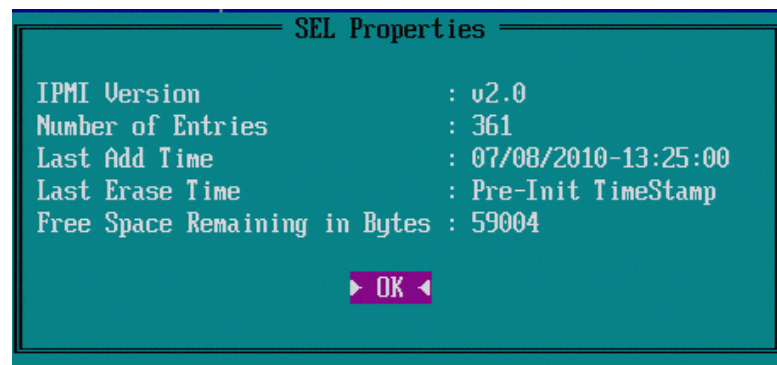


Figure 6: SEL Properties Dialog

Notes:

- The SEL viewer will display the Free Space Remaining in bytes.
- In Linux*, the SEL Properties dialog will not display Last Add Time and Last Erase Time.

Clearing the Intel® SEL

The SEL has a limited capacity. Refer to the Specifications in your server board Product Guide for the maximum number of records for server. After the SEL is full, subsequent system events will not be recorded and you will need to manually clear the SEL. There are two ways to clear the SEL (the Windows Preboot Environment* version is shown in this example):

- Use the command line syntax: **selview /clear**
- Use the **SEL | Clear** menu option from the graphical SEL viewer window.

Sorting the Intel® SEL Entries in the UI

Use the **SEL | Sort by** option in the SEL Viewer main window to sort the SEL entries by different fields. This option, when selected, displays a list of fields by which the entries can be sorted. You can sort the records by Num, Time Stamp, Sensor Type and Number, Event Description, and Generator ID. Upon choosing the appropriate field, sorting is done by that field. This option is not available if the SEL entries are displayed in hexadecimal mode. For Windows*/Linux* based SEL Viewer Utility, sorting can also be performed by clicking on the appropriate Column heading using a mouse (in case of text mode display).

Go To Option (Linux*-only Feature)

Use the **SEL | Go To** option in the SEL Viewer main window to select a particular SEL entry given its Serial Number. You can enter the Serial Number of the SEL Entry in the textbox provided in the Go To dialog and the SEL Table on the Utility main window will be scrolled and that particular entry will be highlighted. **Go To** can be accessed by the shortcut CTRL+G. This feature is currently supported only on Windows* & Linux*.

Getting Additional Help

If you need help on the command line syntax or any of the graphical menu items that are not described in this User Guide, use the online help. There are two ways to get help:

- Use the command line syntax: **selview /help**
- Use the **Help** menu option from the graphical SEL Viewer window.

Uninstalling the Intel® SEL Viewer

To uninstall the SEL Viewer Utility in EFI, do the following:

1. Go to the directory in the command line prompt, where all your utility files are copied from the utility released location.
2. Run `cd ..` on a command line prompt. This will take you to a directory one level below.
3. Remove all the directories including subdirectories in the current directory where you are. This leads to the uninstallation of the utility files.

To uninstall the SEL Viewer Utility in Windows*, do the following:

The utility files should be manually removed, if they were installed stand alone.

1. Go to the directory in the command line prompt, where all your utility files are copied from the utility released location.
2. Run `cd ..` on a command line prompt. This will take you to a directory one level below.
3. Remove all the directories including subdirectories in the current directory where you are. This leads to the uninstallation of the utility files.

To uninstall the SEL Viewer Utility in Linux*, do the following:

1. Go to the directory in the command line prompt, where all your utility files are copied from the utility released location.
2. Run `cd ..` on a command line prompt. This will take you to a directory one level below.
3. Remove all the directories including subdirectories in the current directory where you are. This leads to the uninstallation of the utility files.

Appendix A. Exit Error Codes

The command line version of the SEL Viewer may be used in a script to automate the tasks of saving the SEL, clearing the SEL, or searching the SEL. The following list of exit codes may be useful in the error handling section of the script.

Integer Value	Interpretation
0	Successful termination
1	Unable to clear SEL
2	SEL log is empty
3	Unable to read SEL entries
4	Unable to create SEL file
5	Invalid invocation
6	IPMI Driver initialization failed
7	Unable to initialize SEL Viewer
8	Unknown error